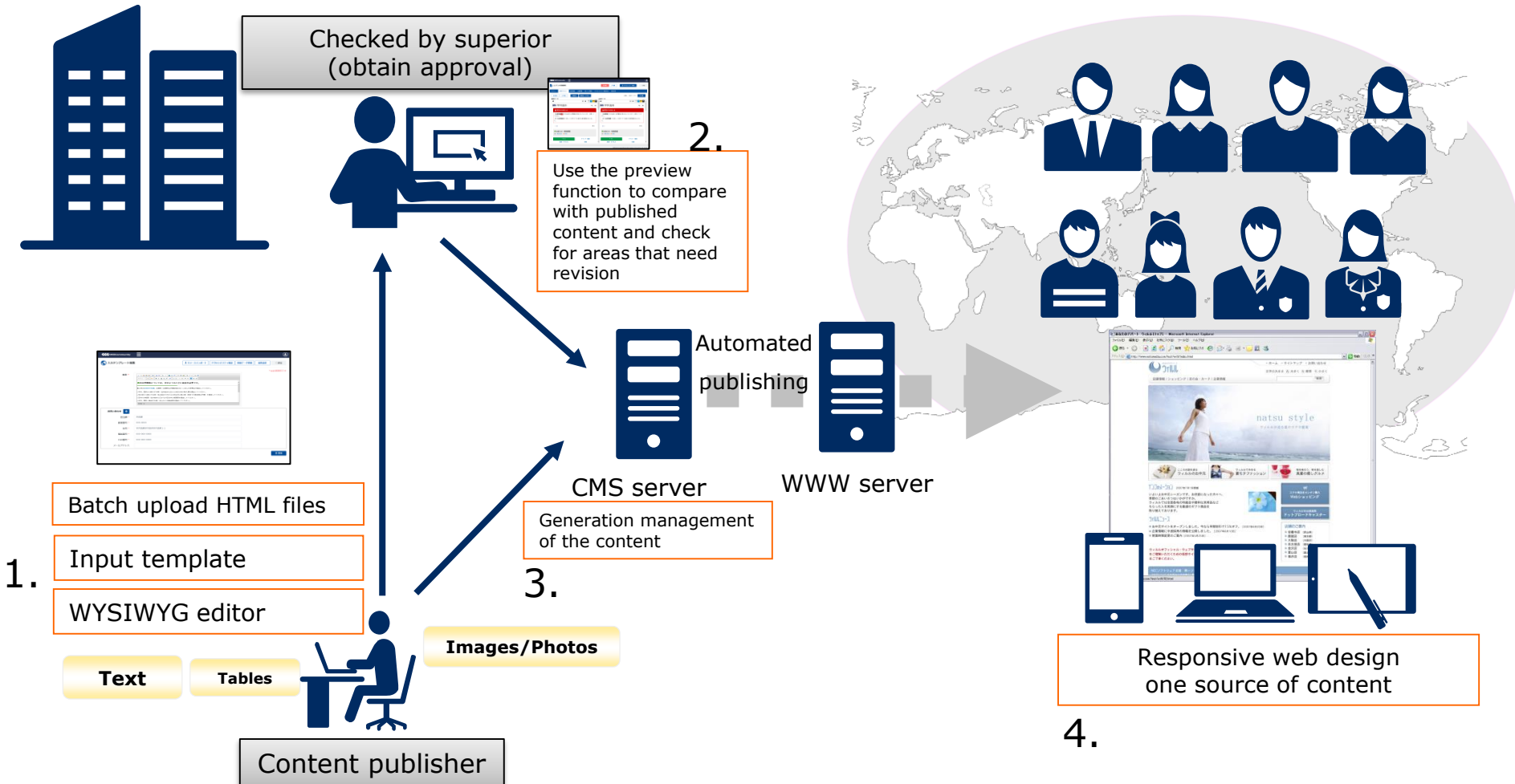


# Overview of WillCommunity/CMS

Even without specialized knowledge, anyone can create standard web content using the input template. Moreover, created content is published only after determined as appropriate and approved by a superior, enabling proper management and control of information.



# Overview of WillCommunity/CMS

WillCommunity is a Contents Management System (CMS) providing functions designed to help manage and operate websites. It contributes to more streamlined website management and provides a more convenient method to deliver information.

## Examples of issues in website management

### Management burden imposed on the department in charge

- Content creation is not properly allocated to each cost center
- Sending information to multiple platforms, like event calendars and SNS, is complicated

### Controlling information delivery and increased incidental work

- Designing for consistency and accessibility
- Implementing open data...etc.

The above issues in website management...

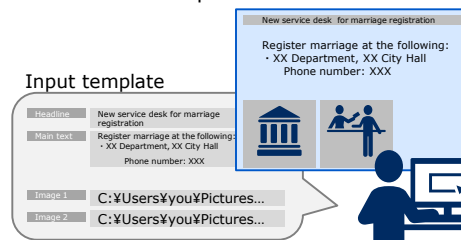


 can be resolved with WillCommunity!

## Examples of proposed usages for WillCommunity

### Update content simply by filling out the fields in the template

Information can be easily delivered to each cost center by creating input fields for headlines, text, images, and other elements, thereby simplifying the content creation process.

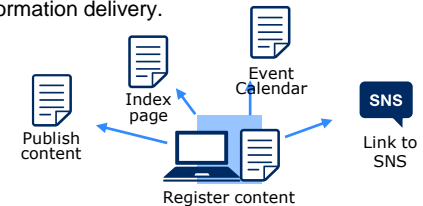


### Using a template promotes greater consistency

Using a template preformatted for accessibility enables anyone, regardless of skill level, to achieve consistency in design and accessibility.

### Update information for multiple destinations with a single post

The same content can be updated or delivered to multiple destinations. Using external function linkages, information can be linked to SNS and other services. This improves the efficiency of the entire work process and enables multi-channel information delivery.



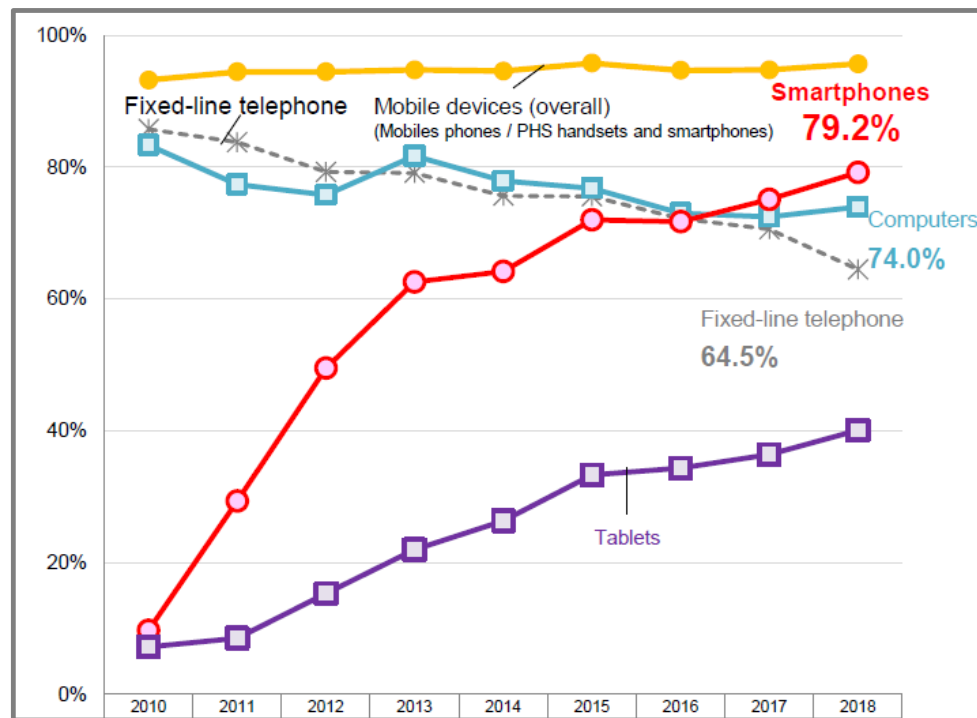
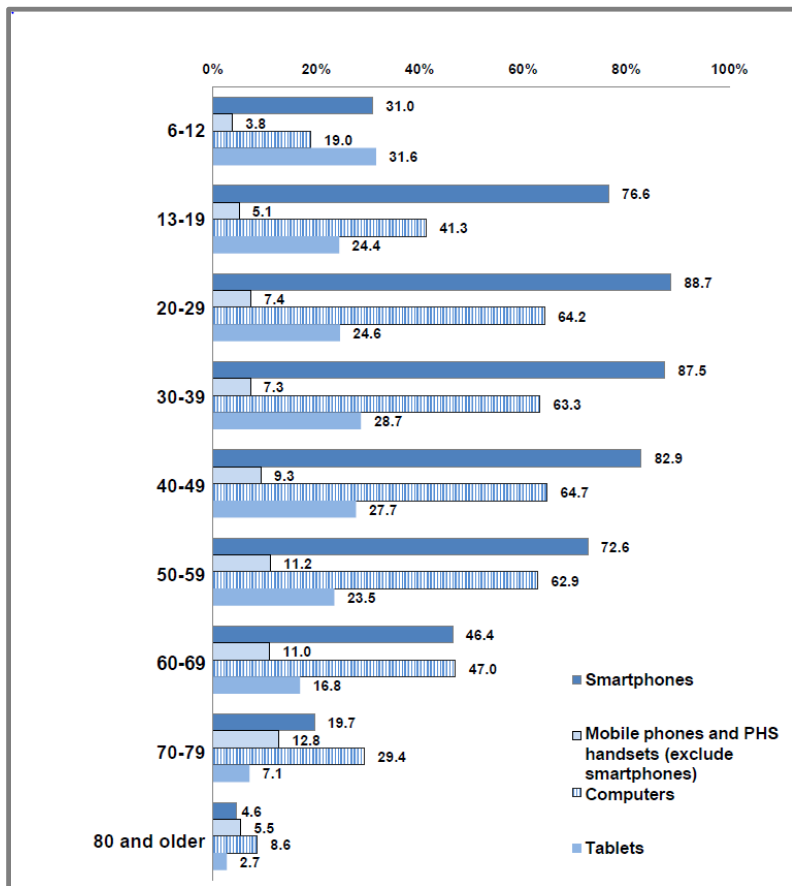
### Extensive accessibility checker

A pre-check function compliant to WCAG 2.0 (Web Content Accessibility Guidelines) is built in as a standard feature. The function automatically checks for and corrects any syntactic features and elements that may impact accessibility for readers.



# [Reference] Communications Usage Trend Survey

According to a survey conducted by the Ministry of Internal Affairs and Communications, approximately 80 percent of households have smartphones.



The internet usage rate exceeded 90% in the age group of 13 to 59 year olds.

The percentage of households that have smartphones has increased to approximately 80%, exceeding households that have landline phones (64.5%) and computers (74.0%).

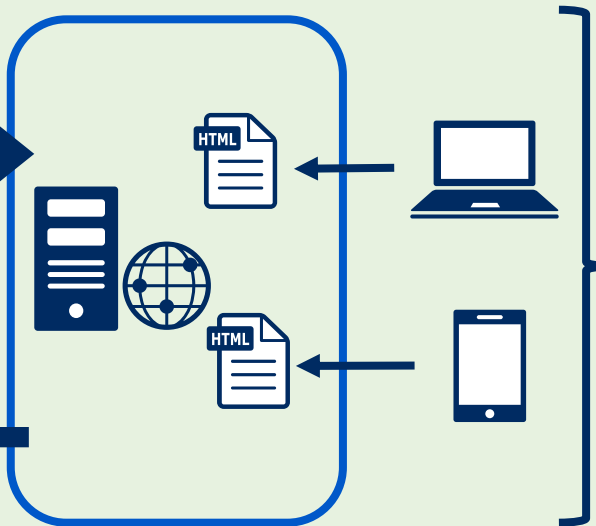
Ministry of Internal Affairs and Communications: 2018 Communications Usage Trend Survey

# Evaluation of Environmental Impact of WillCommunity/CMS

## Before

Content publisher

WillCommunity/CMS Ver. 1



Reader

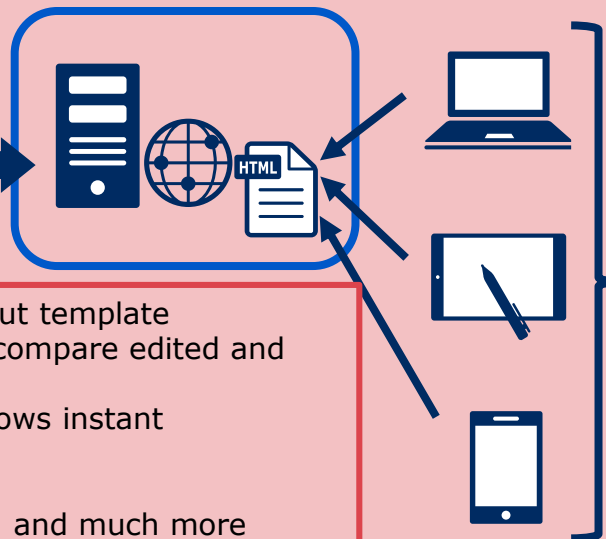
1. Content is created using WYSIWYG editor
2. Published data is compared and edited visually
3. Reverting to past data requires reinput
4. Content must be edited individually per media

Accessibility of the entire website is checked and revised after publication (without using a checker)

## After

Content publisher

WillCommunity/CMS Ver. 3



Reader

1. Content is created using input template
2. Preview function is used to compare edited and published content
3. Generation management allows instant reflection of past data
4. Responsive web design

and much more

Built-in accessibility checker  
\* Checking can be performed during editing

# Evaluation of Environmental Impact of WillCommunity/CMS

