

MasterScope SystemManager G 8.0

New Features and Enhancements

August, 2018
Cloud Platform Division
NEC Corporation

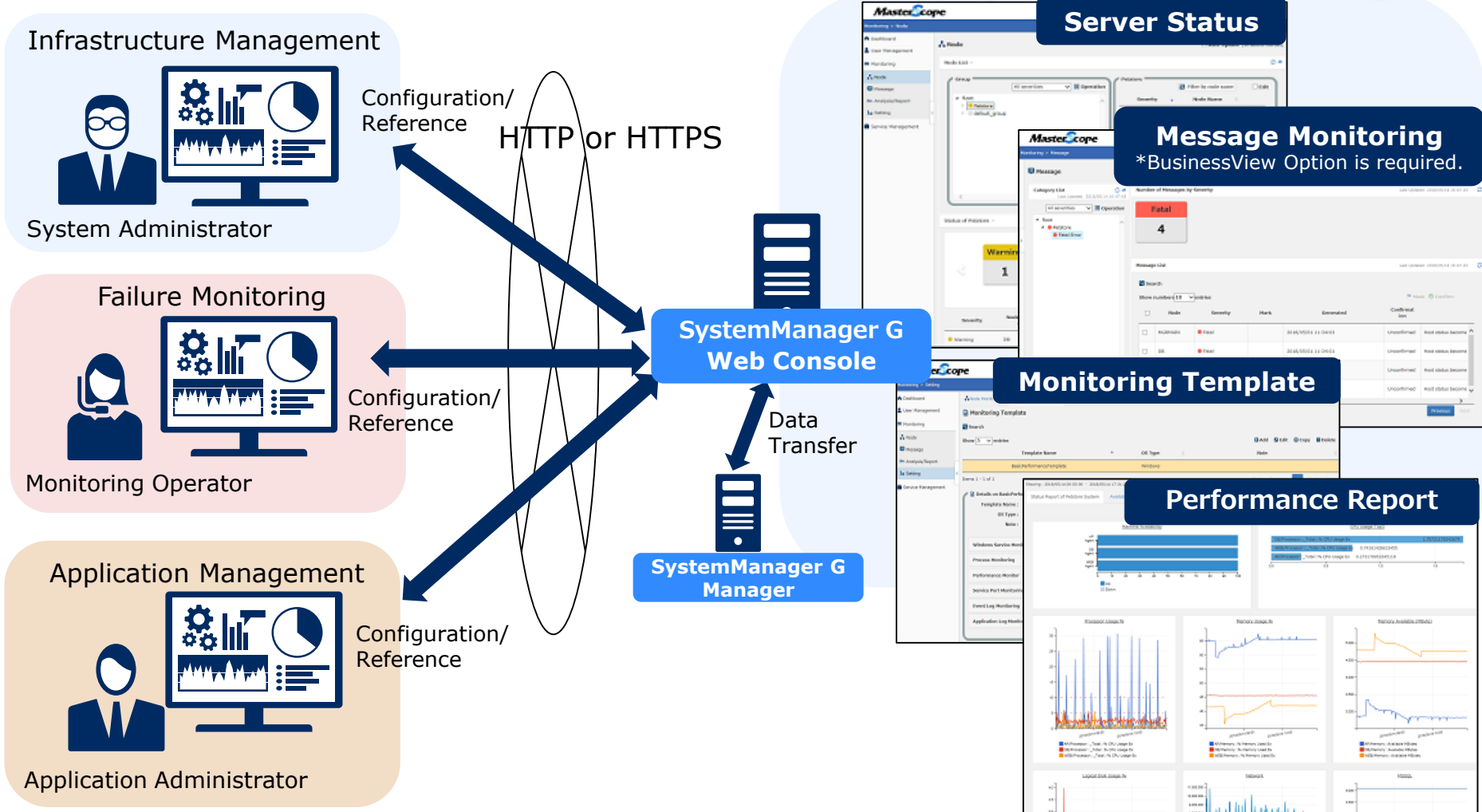
Feature Updates

■ MasterScope SystemManager G 8.0 has been released in Jul.18, 2018.

- Web Console
 - Monitoring Dashboard
 - Performance Report
 - Monitoring Template Management
- New Platform Support

Web browser console allows you to monitor systems from terminals without View installed.

*MasterScope SystemManager G8 Web Console is required.



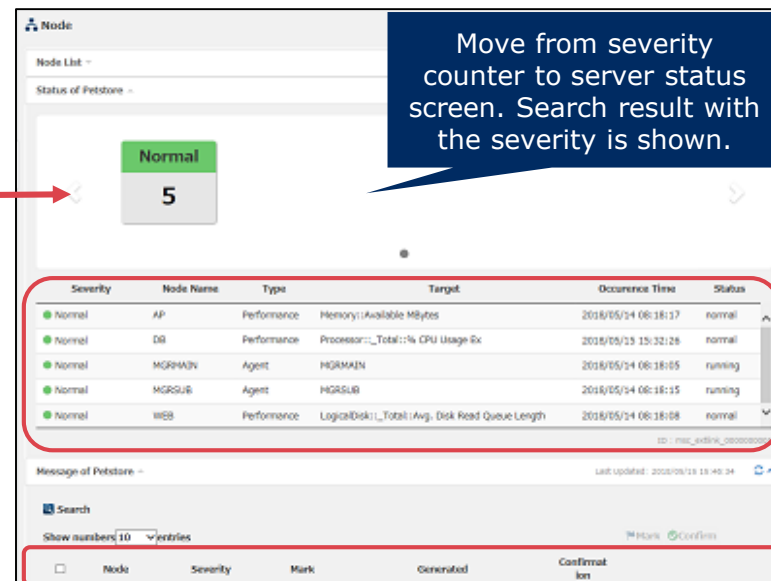
1. Monitoring Dashboard

Option
Web Console

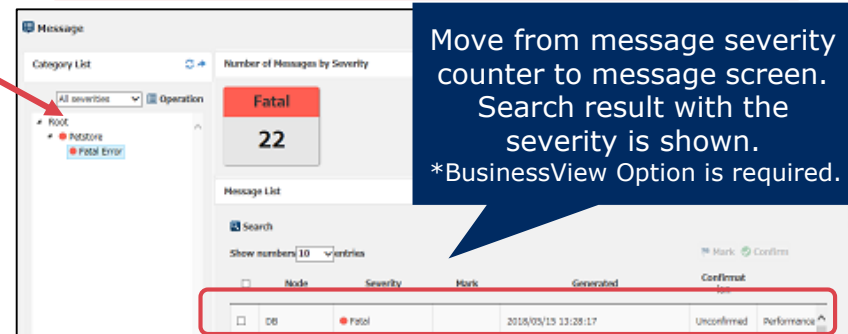
You can create and customize your dashboard with widgets to get a quick view of the system status as soon as you login.



Widgets can be freely added and adjustable on a personal dashboard for each user.



Move from severity counter to server status screen. Search result with the severity is shown.

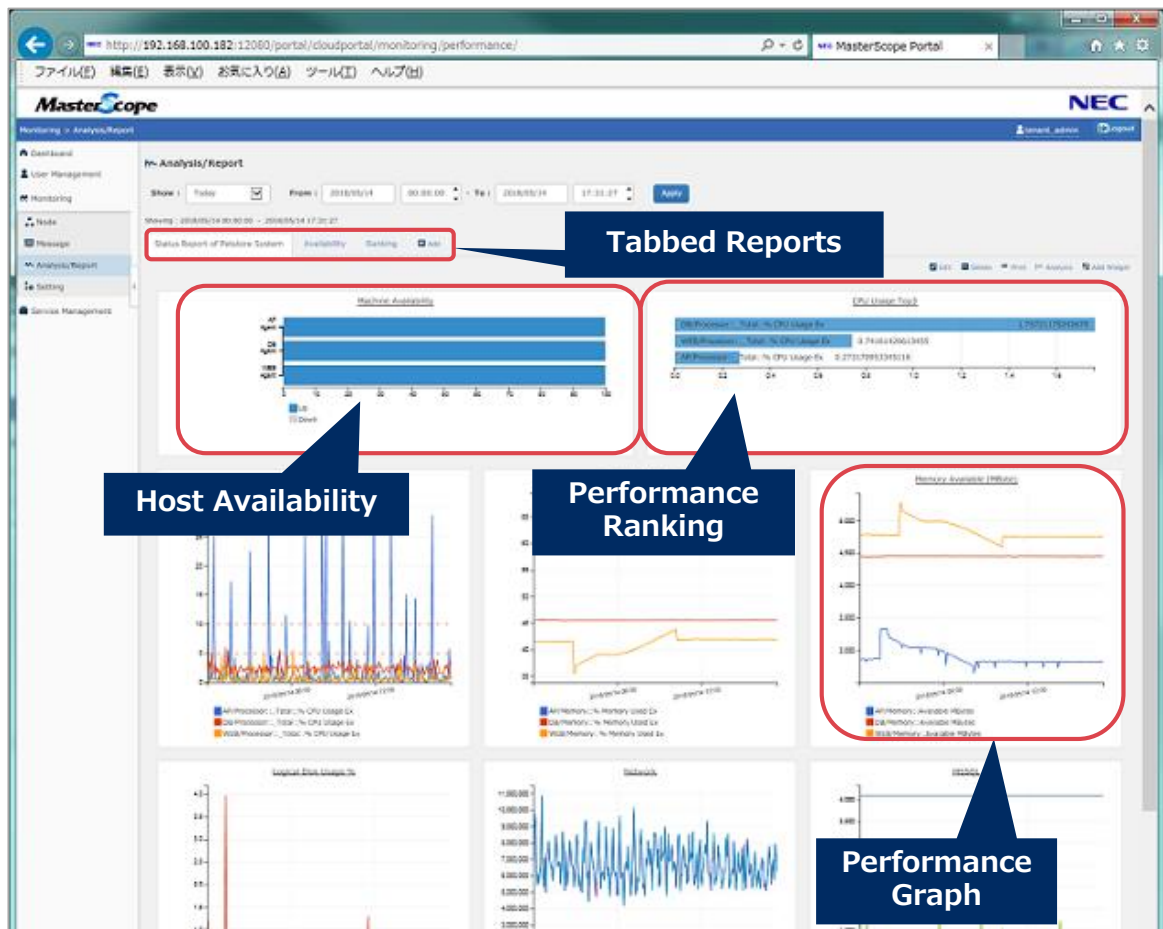


Move from message severity counter to message screen. Search result with the severity is shown.
*BusinessView Option is required.

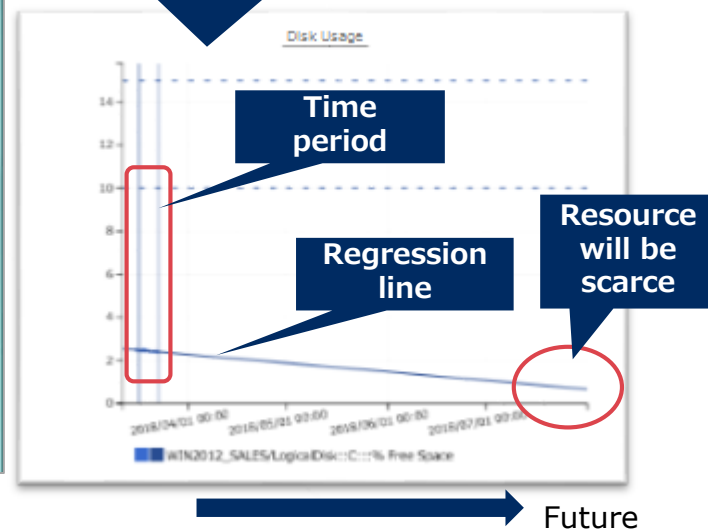
2. Performance Report

Option
Web Console

Performance reports are displayed using tabs. Host availability, ranking, and capacity management by regression lines are newly added features.



Drawing a regression line based on performance data during the specified time period enables you to estimate resource scarcity in the future.



3. Monitoring Template Management

Option
Web Console

This feature enables you to create and manage monitoring definitions of agents. Definitions can be collectively applied to multiple agents.

The screenshot shows the MasterScope web console interface. The top navigation bar includes 'Monitoring > Setting' and user information 'tenant_admin' with a 'Logout' button. The left sidebar contains a menu with 'Node Monitoring', 'Monitoring Template', 'E-mail Report', and 'Command'. The 'Monitoring Template' section is active, displaying a table of templates. A red box highlights the table, and a blue callout points to it. Below the table, a red box highlights the 'Details on Windows2012R2' section, and a blue callout points to it. A blue arrow points from the 'Details' section to the 'Apply Template' dialog box on the right.

Template Name	OS Type	Note
BasicPerformanceTemplate	Windows	
OracleDB	Windows	
RHEL7	Linux/Unix	
Tomcat	Windows	
Windows2012R2	Windows	

Items 1 - 5 of 5

Details on Windows2012R2

Template Name : Windows2012R2
OS Type : Windows
Note :

Windows Service Monitoring

Process Monitoring

Performance Monitor

Service Port Monitoring

Event Log Monitoring

Application Log Monitoring

Apply

Monitoring templates are created and managed for Windows and Linux.

Definitions are created and referred via Web Console.

Definitions are applied to multiple agents.

The dialog box titled 'Monitoring Template - Apply Template' is shown. It prompts the user to 'Select a node that you want to apply a monitoring template to.' A tree view on the left shows 'Root' with children 'Petstore' and 'default_group'. A search bar 'Enter node name' is present. A table on the right lists nodes with checkboxes. A red box highlights the table, and a blue callout points to it. The 'WEB' node is selected and highlighted in yellow.

Node Name
<input checked="" type="checkbox"/> AP
<input checked="" type="checkbox"/> DB
<input type="checkbox"/> MGRMAIN
<input type="checkbox"/> MGRSUB
<input checked="" type="checkbox"/> WEB

Cancel OK

*Not all monitoring items are supported.

System Requirements

- Web Console
 - Windows Server 2008 (x64), 2008 R2, 2012, 2012 R2, 2016
 - Red Hat Enterprise Linux 6.1-6.9, 7.1-7.4
- Web Browser
 - Internet Explorer 11, Microsoft Edge 40, Mozilla Firefox 52

New Platform Support

The following platforms are newly supported.

- Agent
 - Red Hat Enterprise Linux 7.4
- HyperVisor Monitor
 - VMware vSphere 6.5 (including Appliance)
- Oracle Database Monitoring
 - Oracle 12c R2 for AIX 6.1, 7.1
- WebLogic Monitoring, Tomcat Monitoring, Java AP Monitoring
 - Windows Server 2016

 **Orchestrating** a brighter world

NEC