

***MasterScope***  
**SystemManager**  
Server Management Software

November, 2015

NEC Corporation,  
Cloud Platform Division,  
MasterScope Group





# **Orchestrating** a brighter world

NEC brings together and integrates technology and expertise to create the ICT-enabled society of tomorrow.

We collaborate closely with partners and customers around the world, orchestrating each project to ensure all its parts are fine-tuned to local needs.

Every day, our innovative solutions for society contribute to greater safety, security, efficiency and equality, and enable people to live brighter lives.

# Index

1. Product Overview
2. Advantages & Problem Solving
3. Functions

# 1. Product Overview

# MasterScope Product Lineup

MasterScope is a series of Integrated System Management Software products which enables simple operation and supports controlling whole IT system.

## ***Corporate Management***

Integrated Management	Cloud Management	Asset Management
MISSION CRITICAL OPERATIONS	Virtual DataCenter Automation Cloud Manager	AssetSuite

## ***Operations Management***

Job Management	Software Deployment	Platform Management	Backup
JobCenter PrintCenter V	DeploymentManager	NEC SigmaSystemCenter	NetBackUp NetWorker Symantec Enterprise Vault

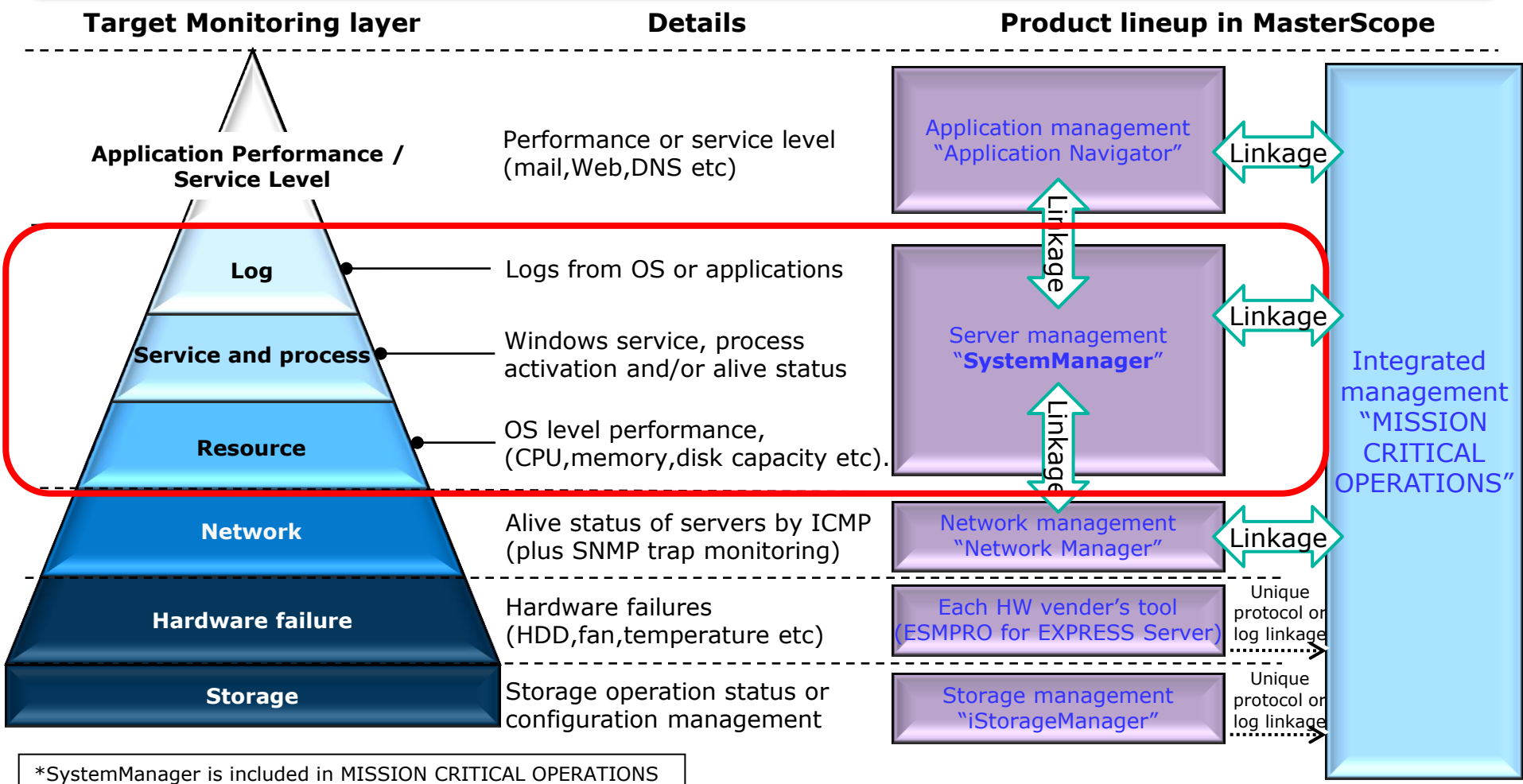
## ***System Management***

Server Management	Network Management	Storage Management	Application Management
<b>SystemManager</b>	Network Manager	iStorageManager Performance Monitor Suite	Application Navigator

\*SystemManager is included in MISSION CRITICAL OPERATIONS

# MasterScope Products Monitoring Layer

MasterScope offers integrated system management for Network, Hardware, and Application layer.

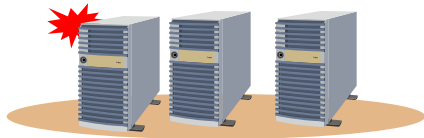


## 2. Advantages & Problem Solving

# Common issues in server management

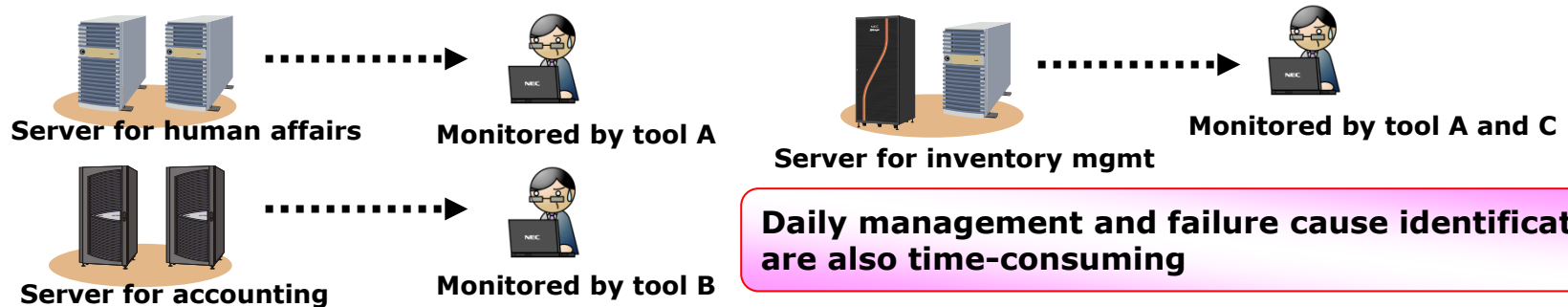
- Servers used by individual business unit, are under distributed management.
- Efficient and unified management is required.

## 1. Missing Alerts



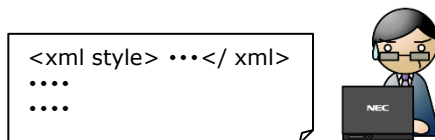
Problem resolution become more time consuming due to lack of failure awareness

## 2. Multiple tools are used to manage heterogeneous environment



Daily management and failure cause identification are also time-consuming

## 3. Poor usability discourages utilization



Not intuitive, difficult to understand, and learning how to use is very time-consuming. Additionally, settings modification also requires script development...

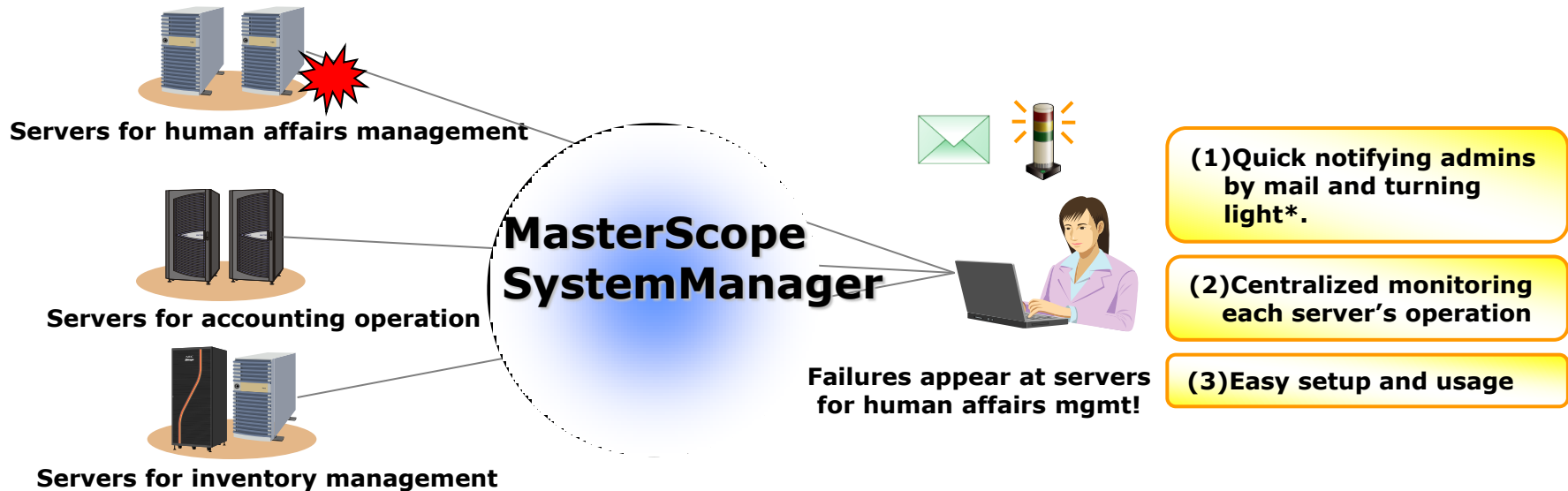


# MasterScope SystemManager

Use MasterScope SystemManager, to centralize individual monitoring activities and enhance efficiency, improve rationality of operations

- (1) System components not monitored correctly means administrator could not be aware of warnings/failures.
- (2) Various tools for heterogeneous system and platforms
- (3) Settings modification and operation is too difficult to master

**MasterScope SystemManager is the solution!**



**\*Turning light: NEC's product integration partner**  
Please refer to <http://www.patlite.com/>

# Example: user requirements and how SystemManager satisfies it

## User requirements

To be aware of and react when failures initiate

To monitor by single tool (or UI) even in heterogeneous environment

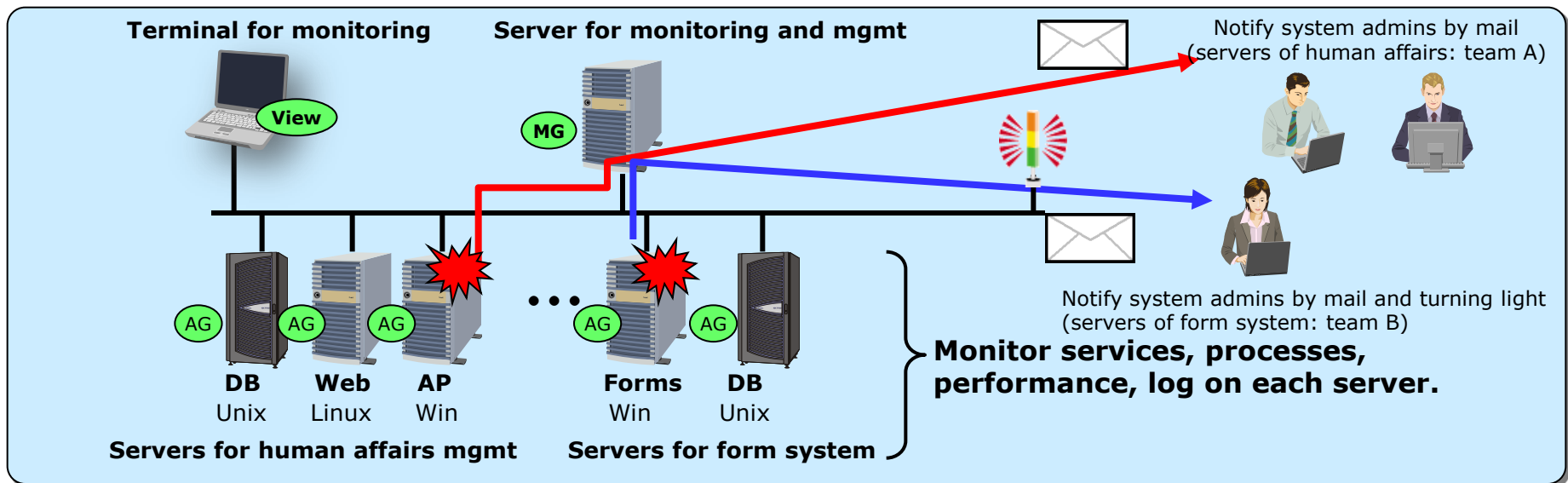
Necessary functions for servers monitoring are fully equipped and easy to understand.

## MasterScope SystemManager's approaches

Solved by "Monitoring" + "Intelligent notification"




Compatibility with multiple-vendors  
(Windows, Linux (Redhat, SuSE), Unix)

All-in-one monitoring  
and easy configuration by GUI.



\* MG: Manager, AG: Agent

# Advantages of MasterScope SystemManager

-  **Simple configuration** Functions required for server management are provided for all-in-one and easy configuration
-  **Sophisticated usability** Easily understandable GUI enable settings and monitoring from single interface.
-  **Superior scalability** Good compatibility with multi-vendor platforms and perfect collaboration with MasterScope family

# Advantages of MasterScope SystemManager 1/3

1

## Simple configuration

Functions required for server management are provided for all-in-one and easy configuration

**Log monitoring**

**Detect danger/failure from OS/Applications log.**

**Process/Service monitoring**

**Detect abnormal termination of Applications**

**Performance monitoring**

**Monitor performance change on CPU/Memory**

**Configuration management**

**Manage HW/SW configuration**

**Intelligent notification**

**Notify admin by mail/turning light**

**Message filtering**

**Narrow down messages by filter settings**

**Log auditing**

**Manage operations by itself**

**All  
in  
One**

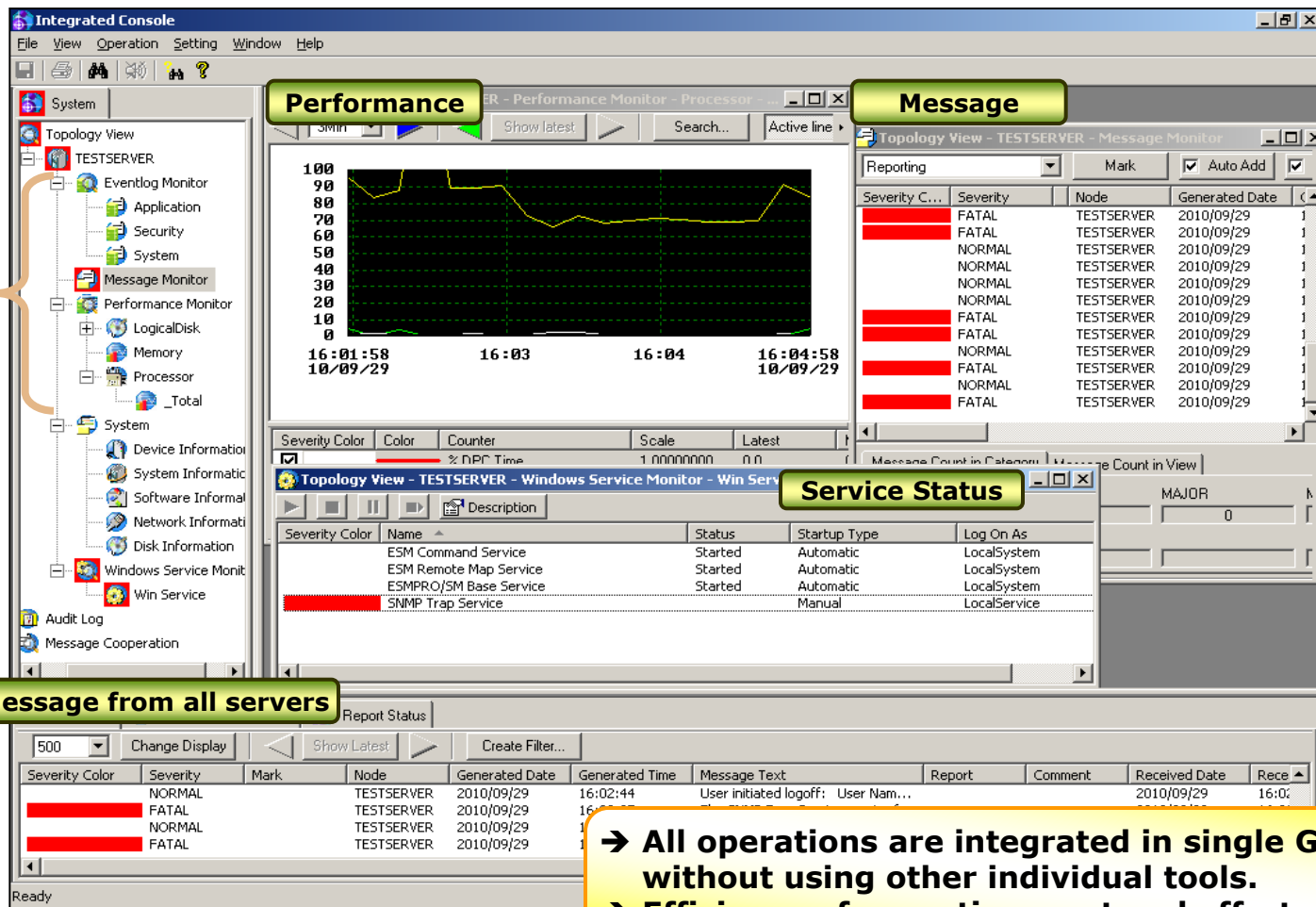
- Easy in purchase/introduce/operate, Only one product for server failure monitoring and configuration management.
- Compatible with multi-vendor platforms.

# Advantages of MasterScope SystemManager 2/3



## Sophisticated usability

Easily understandable GUI enable settings and monitoring from single interface.



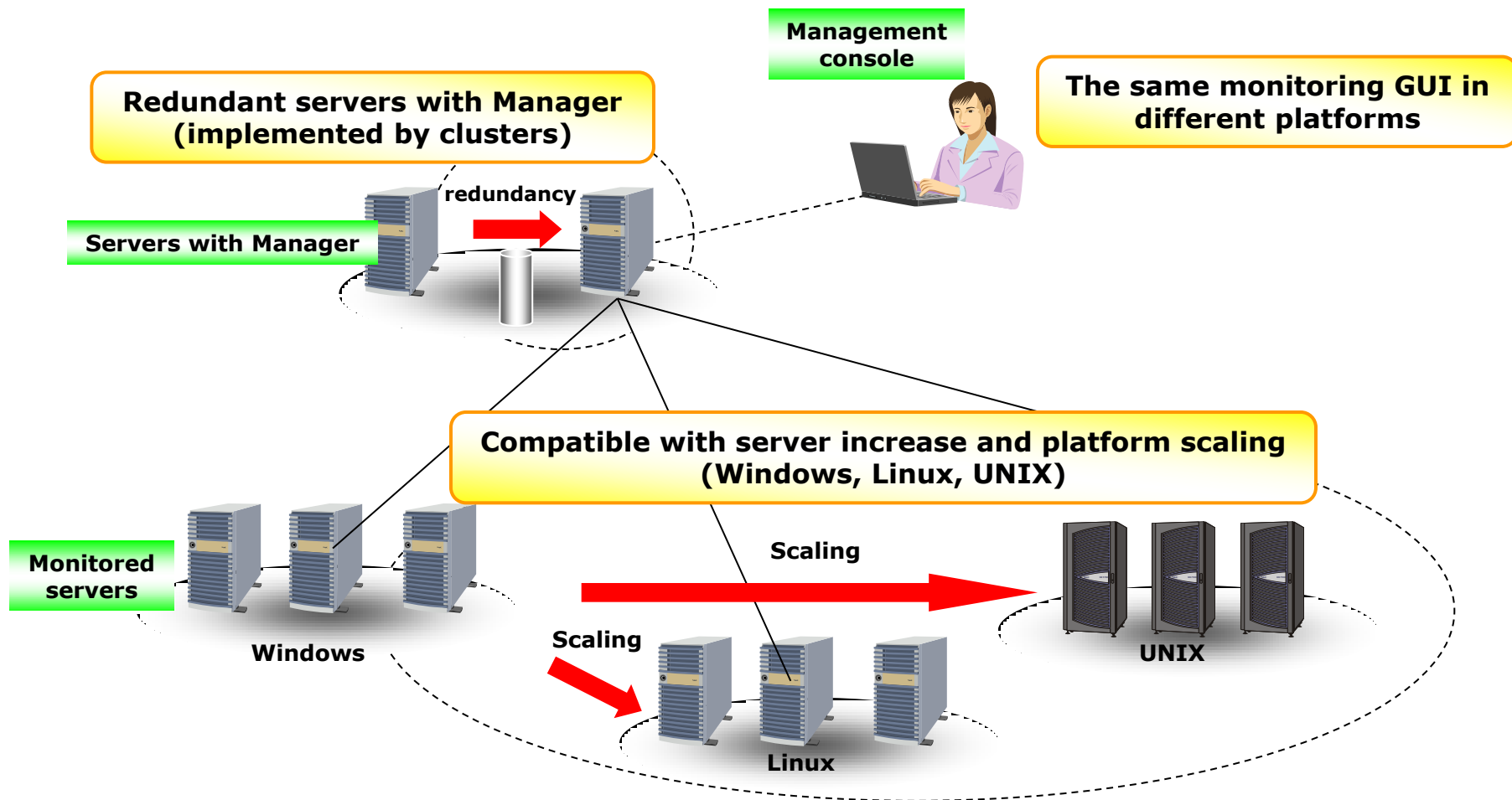
- All operations are integrated in single GUI without using other individual tools.
- Efficiency of operation, cost and effort are improved

# Advantages of MasterScope SystemManager 3/3



## Superior scalability

Good compatibility with multi-vendor platforms and perfect collaboration with MasterScope family



# Advantages of MasterScope SystemManager 3/3

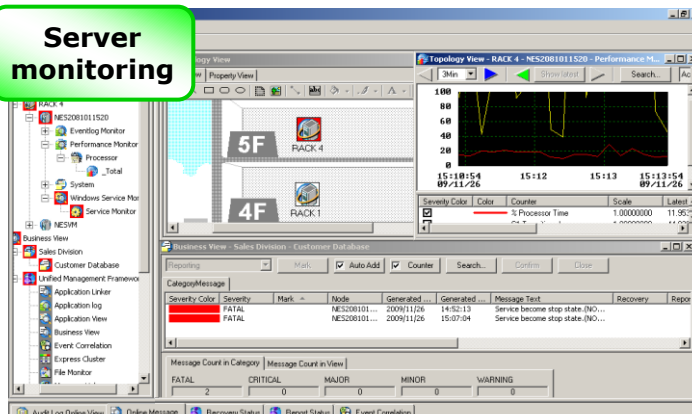


## Superior scalability

Good compatibility with multi-vendor platforms and perfect collaboration with MasterScope family

As requirements in server/network/application performance monitoring increases integration of products and centralized configuration/monitoring is required.

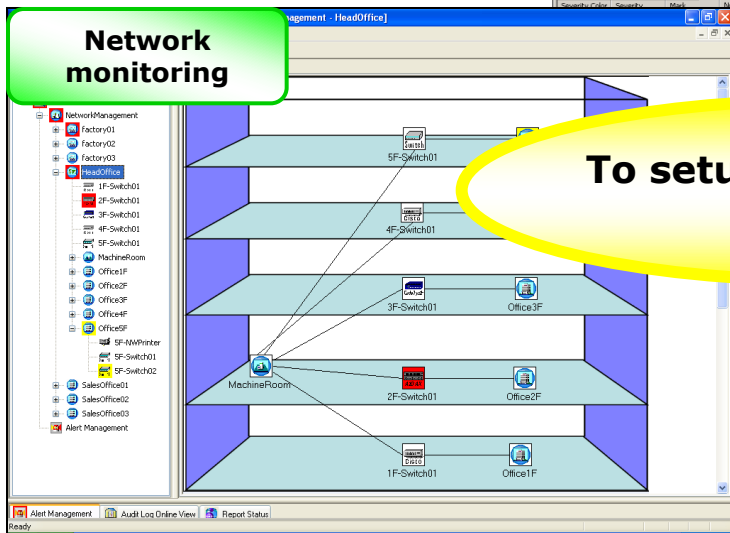
### Server monitoring



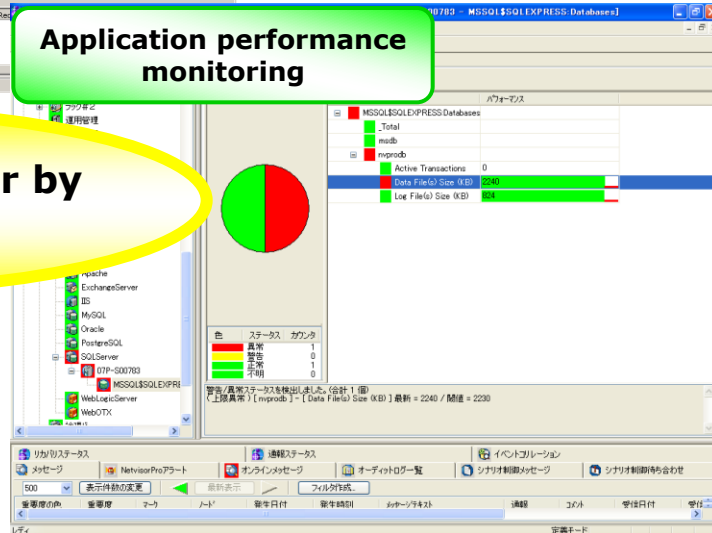
- Message mgmt is integrated even after system scaling

- Usability is kept well even after system scaling

### Network monitoring



### Application performance monitoring



To setup and Monitor by single GUI

# 3. Functions



# Function overview

Functions	Details
Service Process Monitoring	<ul style="list-style-type: none"><li>● Live monitoring of process or services.</li></ul>
Process Monitoring	<ul style="list-style-type: none"><li>● Monitoring of Existing process.</li></ul>
Performance Monitoring	<ul style="list-style-type: none"><li>● Displaying the workload of each server graphically (CPU/Memory/HDD usage rate etc).</li><li>● Monitoring by threshold value and alerting operators.</li><li>● Storing the operation status data to support failure analysis.</li></ul>
Log monitoring (Event log/syslog/application log)	<ul style="list-style-type: none"><li>● Monitoring OS messages.</li><li>● Agent filters the same messages in order to avoid message rush.</li><li>● Message management by filtering log file output of applications.</li><li>● Displaying the log file contents.</li></ul>
File/Directory Monitoring	<ul style="list-style-type: none"><li>● Monitoring quota and change of file/directory</li></ul>
Configuration Management	<ul style="list-style-type: none"><li>● Displaying configuration of agent-installed machine.</li></ul>
Report Function	<ul style="list-style-type: none"><li>● Via flasher or e-mail it reports certain messages, status change of monitoring process/service, exceeding the resource threshold etc.</li></ul>
User Management	<ul style="list-style-type: none"><li>● Permission for each user</li></ul>
Log Auditing	<ul style="list-style-type: none"><li>● Managing different operations resume on the SystemManager</li></ul>

# Easy Process of Identifying Failure

System Configuration /Status

1. Confirmation of health status of servers



2. Check message index. Detailed message by double-click.

3. Refer to message details

Messages from all servers

The screenshot displays the NEC Business View software interface. On the left, a tree view shows system configuration including SampleApp, Eventlog Monitor, System, Security, Application, NES-3L9UNIO6K31, Application Log Monitor, NvPRO, and Eventlog Monitor. The main area shows a topology view of a server rack with a red circle highlighting a server icon. Below this, a table lists messages from all servers. A red arrow points from the topology view to the message index table. Another red arrow points from a selected row in the table to the 'Message Detail' window on the right.

Severity	Node	Generated...	Gen...
FATAL	SERVER	2010/05/31	09:52:53
NORMAL	SERVER	2010/05/31	09:58:05
FATAL	SERVER	2010/05/31	09:59:21
NORMAL	SERVER	2010/05/31	10:01:05
NORMAL	CLIENT	2010/05/31	10:03:27
FATAL	SERVER	2010/05/31	10:30:06
NORMAL	CLIENT	2010/05/31	10:30:06
NORMAL	SERVER	2010/05/31	10:31:45
NORMAL	CLIENT	2010/05/31	10:31:45
NORMAL	NECPC1	2010/05/25	16:21:31
FATAL	CLIENT	2010/05/25	16:21:33
NORMAL	NECPC1	2010/05/25	16:21:44
FATAL	SERVER	2010/05/25	16:24:01
NORMAL	CLIENT	2010/05/25	16:24:24

**Message Detail**

Message Option Help

Description: SAMAPP

Severity: WARNING

Date/Time

Generated: 2009/01/22 12:04:01 Received: 2009/01/22 12:02:10

Message Text:

[ERROR] 01/22/2009 12:03:56 info test

Application: SampleApp

Object: ALL 001

Message ID: ALL 001

Category: Application

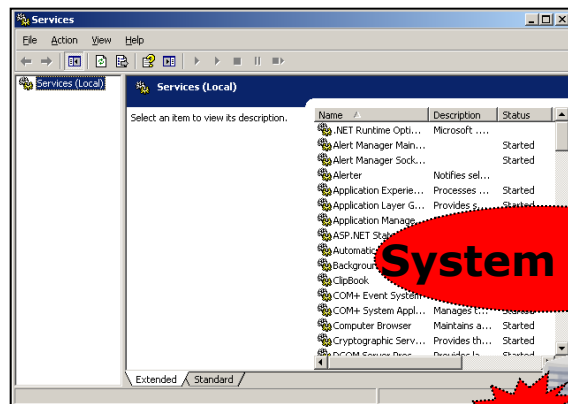
WEB HELP User Help... Confirm

Previous Next

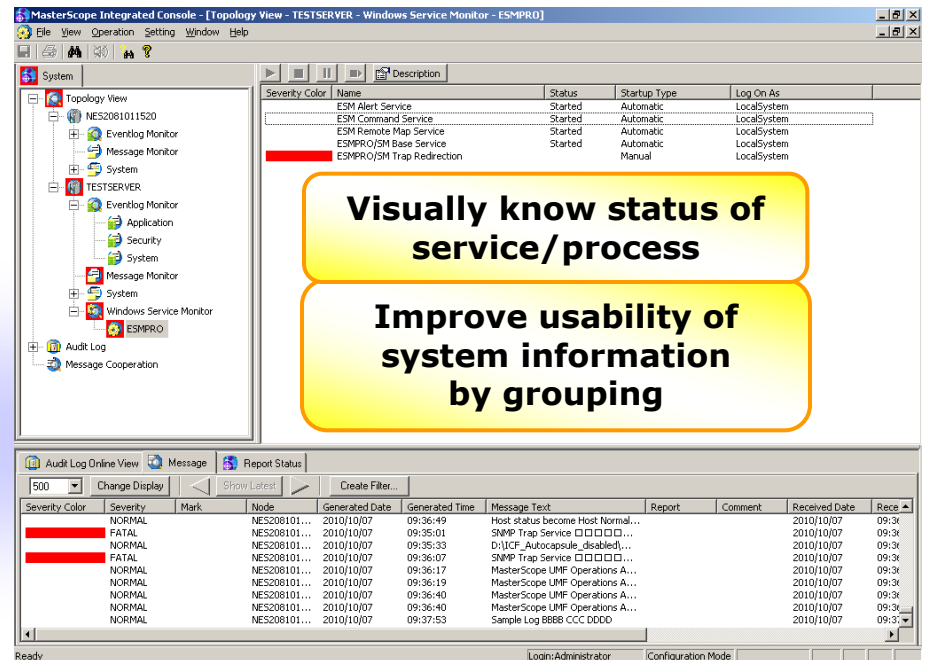
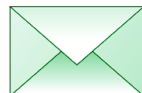
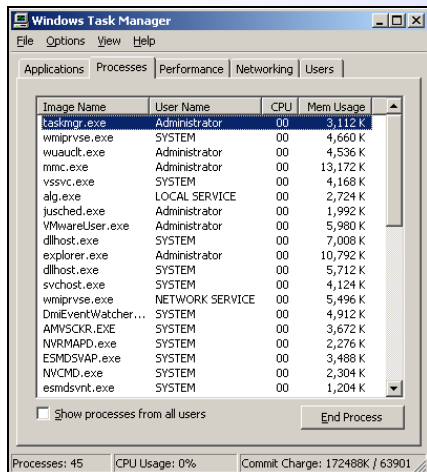
OK Cancel Help

# Service / Process monitoring

Monitors each processes and services on server and notifies admin by alerts if anomaly detected.

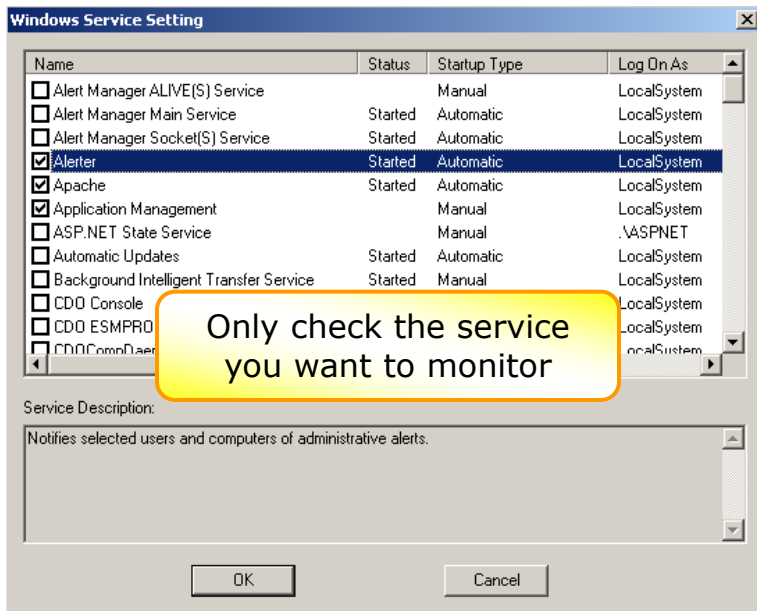


System down

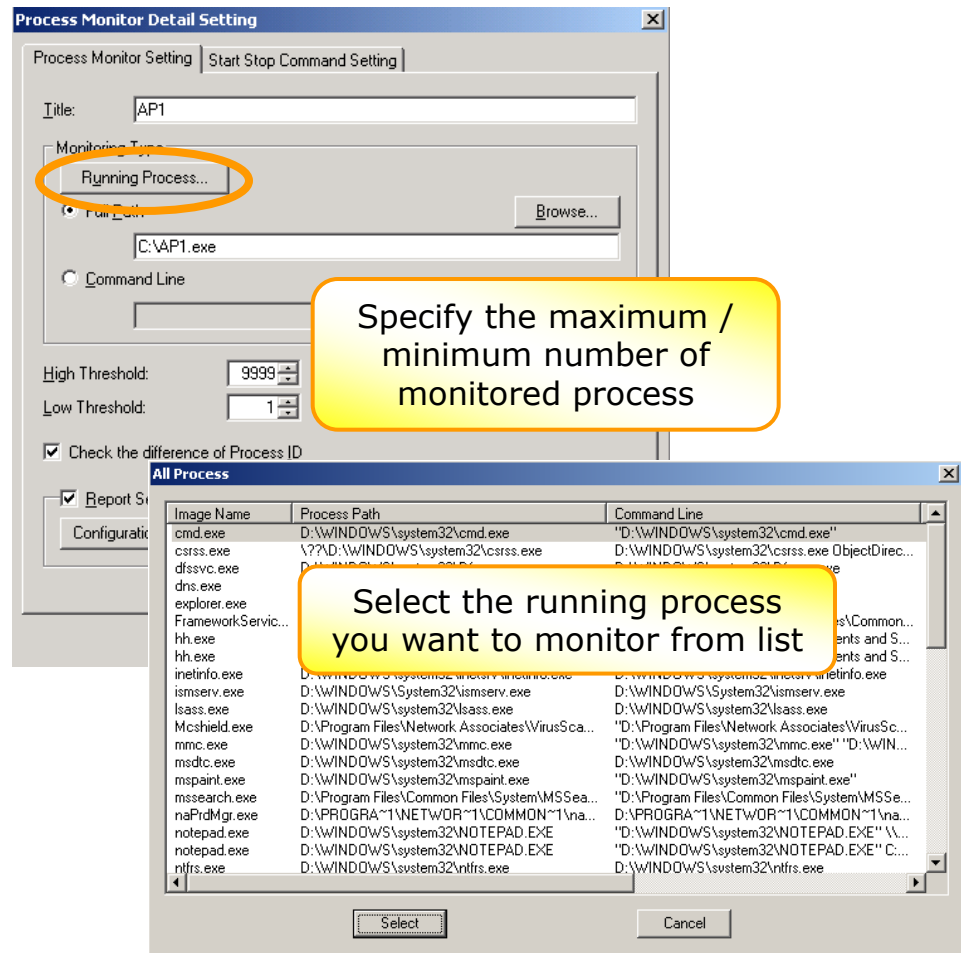


# Service / Process setup image

## Service monitoring setup



## Process monitoring setup

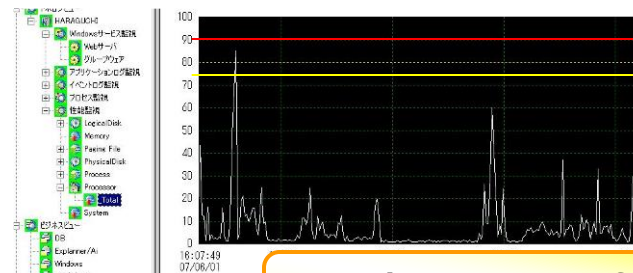


# Performance monitoring

Monitor OS information (like CPU utilization, memory and disk space) by simply setting thresholds to warning and anomaly notifications.

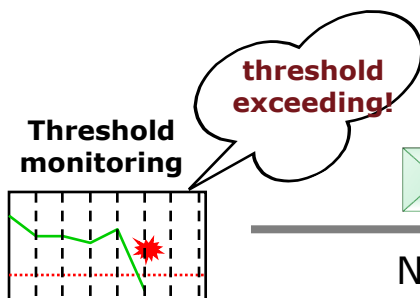
Available threshold setting could be selected from following patterns:

- **Sequential**: event occurs while exceeding threshold
- **Continuous**: event occurs while exceeding threshold continuously specified number of times
- **Average**: event occurs while exceeding threshold by average value from specified number of times.



Monitor system performance with two level threshold settings

Example:  
If available MEM become less than 50Mbytes, please notify admins with anomaly.



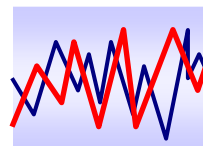
Notify



Performance data

Performance data accumulation enables

**Tendency/Resource analysis**



Performance data accumulation could be utilized in operations status/failure analysis

Performance data accumulation could be simply enabled by checking on settings boxes

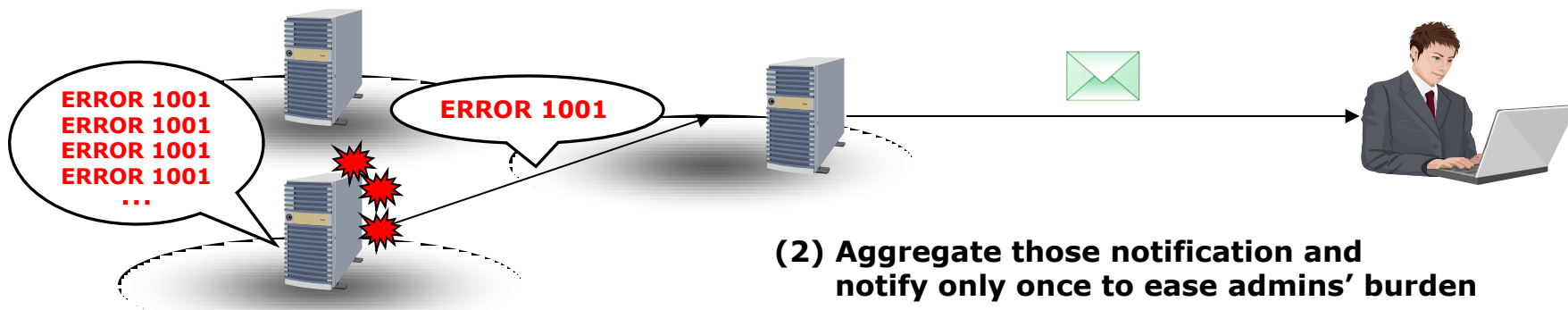




# (Ref) Keyword filtering

"Message Filtering" for log monitoring (application log/syslog/event log) includes functions that are mentioned in the following table.

→ Integration of these functions extract important messages efficiently, furthermore it aggregates notifications and to reduce number of messages.



**(1) Same notification occurs frequently**

**(2) Aggregate those notification and notify only once to ease admins' burden**

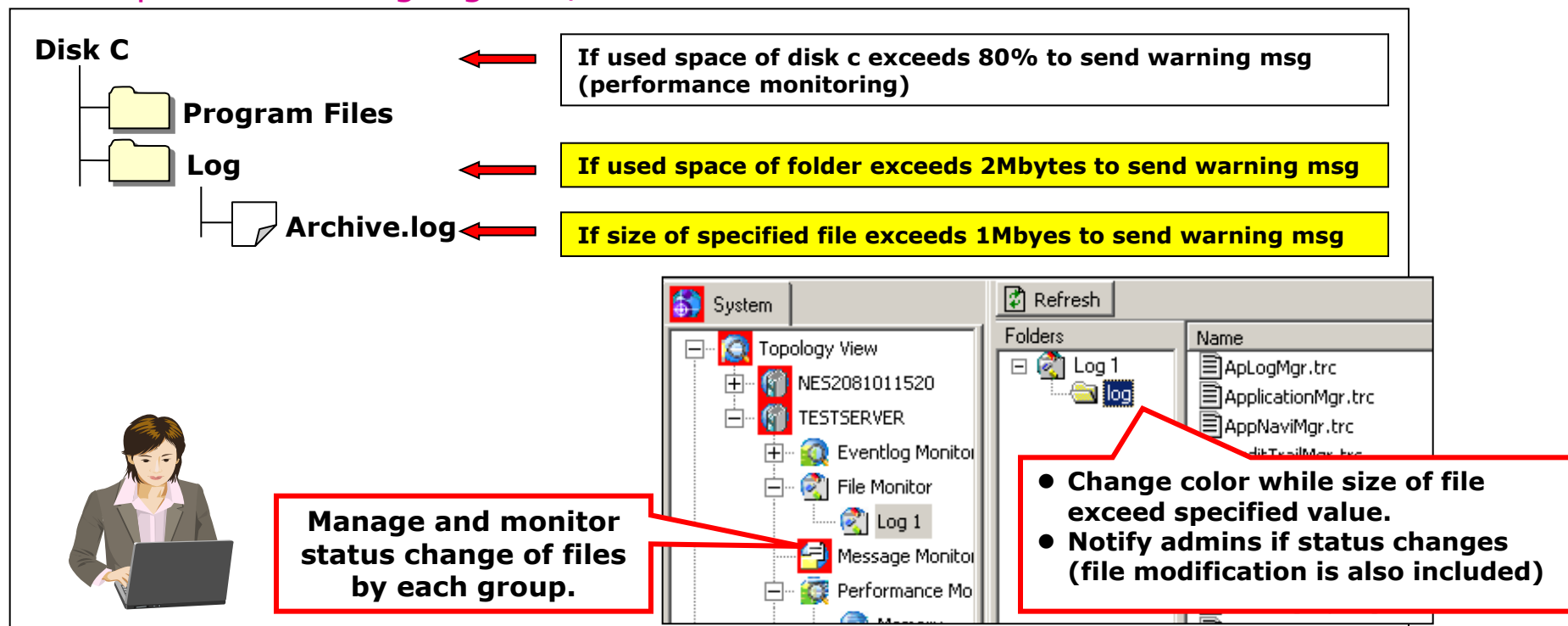
Functions	Detail
Filter for extraction	Notify if keywords included in specified filter
Filter for deletion	Notify if keywords included in specified filter
Reduction of same notification	Aggregately notify if multi messages sent from the same log (by pending the continuous messages)

# Files, directories monitoring

Prevent disk depletion by monitoring size of files, and also enable early detection toward deletion/modification for system required files

- Monitor targeted agents' files, directories regarding their existence, used space, modification.
- Changes the color of icon if utilization of file exceeds specified value, or file is deleted.
- Notification/Warning is possible if its status change (includes file modification)

## <Example: monitoring log files/folders>





# Report Function

- Sends Status notification/warning by e-mail and turning lights
- Objective/message content are also customizable flexibly.

As failures detected,  
notified by  
turning light/e-mail.

**Report Setting**

Report Setting | E-Mail Setting | Action Setting

☒ Report to E-Mail

Policy Name: [Text Field]

Update

Send To: [Text Field]

Send Cc: [Text Field]

Subject: [Text Field]

**E-Mail Policy Setting**

Policy Name: SQL Error

Mail Server: mail.test.ccom

Update Add Delete

Send To: dummyaccount@nec.com

Send Cc: dummyaccount2@nec.com

Subject: Critical Error

Message: Edit...

Encode: Unicode (UT)

OK

**Message Text**

This mail transmitted by the automatic operation.

GENERATEDDATE :\$GENERATEDDATE\$  
GENERATEDTIME :\$GENERATEDTIME\$

NODE :\$NODE\$  
SEVERITY :\$SEVERITY\$  
APPLICATION :\$APPLICATION\$  
OBJECT :\$OBJECT\$

MESSAGEID :\$MESSAGEID\$  
MESSAGETEXT :\$MESSAGETEXT\$

OK Cancel

Notification target and  
level of importance is  
adaptively customizable.

## Parameters used by the MasterScope

Contents	Parameters
Occurrence date	\$GENERATEDDATE\$
Occurrence time	\$GENERATEDTIME\$
Node	\$NODE\$
Severity	\$SEVERITY\$
Application name	\$APPLICATION\$
Object name	\$OBJECT\$
Message ID	\$MESSAGEID\$
Message text	\$MESSAGETEXT\$

# Configuration Management

Centrally manage and view the monitored servers via console

The diagram illustrates a centralized configuration management console. On the left, three server racks are shown, each with a small icon representing its configuration. Arrows point from these icons to a central console window. The console window, titled 'MasterScope Integrated Console', features a menu bar (File, View, Operation, Setting, Window, Help) and a toolbar. The main area is divided into a left sidebar with a tree view and a right pane with multiple data tables.

**Tree View Structure:**

- System
  - Device Information
  - System Information
  - Software Information
  - Network Information
  - Disk Information
  - TESTSERVER
    - Eventlog Monitor
    - File Monitor
    - Message Monitor
    - Performance Monitor
    - System
      - Device Information
      - System Information
      - Software Information
      - Network Information
      - Disk Information
      - Windows Service Monitor
      - ESMPRO

**Topology View - TESTSERVER - System - Software Information**

Node Name	Software Name/Package Name	Version	Data Collection Time
TESTSERVER	Microsoft .NET Framework 3.0 Servi...	3.2.30729	2010/10/14 09:44:14
TESTSERVER	Microsoft .NET Framework 2.0 Servi...	2.2.30729	2010/10/14 09:44:14
TESTSERVER	Adobe AIR	1.5.0.7220	2010/10/14 09:44:14
TESTSERVER	Adobe Flash Player ActiveX	9.0.124.0	2010/10/14 09:44:14
TESTSERVER	NEC ESMPRO Manager Ver. 4.5		2010/10/14 09:44:14
TESTSERVER	Hotfix for Windows XP (KB954550-v5)	5	2010/10/14 09:44:14
TESTSERVER	Microsoft .NET Framework 3.5 SP1	3.5.30729	2010/10/14 09:44:14
TESTSERVER	Microsoft .NET Framework 3.5 SP1		2010/10/14 09:44:14
TESTSERVER	MasterScope SystemManager Manager	5.4.0.0	2010/10/14 09:44:14
TESTSERVER	Hotfix for Microsoft .NET Framework...	1	2010/10/14 09:44:14
TESTSERVER	Operations Navigator Agent		2010/10/14 09:44:14
TESTSERVER	MasterScope SystemManager Svc	5.4.0.0	2010/10/14 09:44:14

**Topology View - TESTSERVER - System - Disk Information**

Node Name	Drive Type	Drive Name	Volume Name	FileSystem Name
TESTSERVER	Removable	A:		NTFS
TESTSERVER	Fixed	C:		NTFS
TESTSERVER	CD-ROM	D:	SSC_2_1	CDFS
TESTSERVER	Fixed	I:	Mirror	NTFS

**Topology View - TESTSERVER - System - Device Information**

Node Name	Device Type	Device ID	Device Name	SLOT No	SCSI-ID	L
TESTSERVER	SCSI	0	DEVICE:0	0	0	
TESTSERVER	SCSI	1	DEVICE:1	0	1	

Even if communication with agent is not available configuration will be viewable.  
→Helps while failure occurs\*

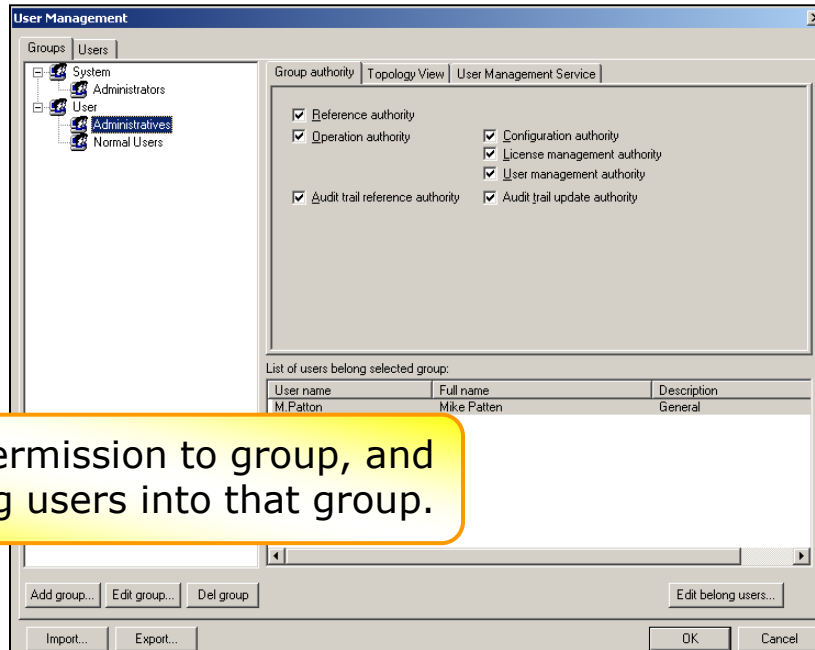
\* Initial communication is required.

Item	Detail
Device information	Device name and its vendor information (ie. HDD)
System information	OS version, host name, CPU information, etc.
Software information	Installed software with its version.
Network information	IP, MAC address, network identifier, etc.
Disk information	Drive name, available space, etc.

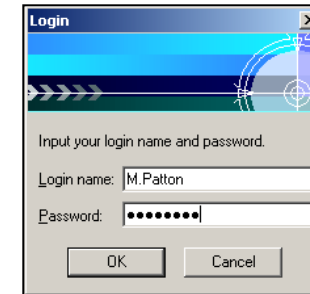
Note: acquirable information is dependent on platforms

# User Management

Assigns operating permission to each user to prevent operating mistakes and security



Set permission to group, and adding users into that group.



**"M. Patton"**  
-> Administration authority



**"B. Osborn"**  
-> Operation authority



**"K. Cobain"**  
-> Reference authority

**Check all operations by referring to audit logs.**

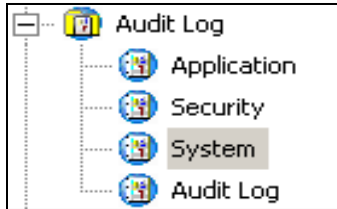
Permission	Details
Confirm	Permission of only referring system information
Operate	Permission of message confirming, process/windows service startup and stop operation
Change definition	Permission of switching to "Configuration mode" to modify system definitions
License management	Permission of registering and managing licenses
User management	Permission of creating user/group and permission assigning

# Audit Logs Management

Operations at SystemManager is recorded by "When/Who/What", and notifies admin as per the requirement

- Operations at MasterScope SystemManager (including monitored nodes, manager's GUI, automatic operations) are recordable as audit logs for future tracing.
- These Logs could be displayed by different categories, and notification settings could be specified by categories.

## Tree view for audit logs mgmt



Category	Log details
Application	Record logs outputted from applications ("MasterScope MISSION CRITICAL OPERATIONS" is required)
Security	Record audit logs from user management
System	Record audit logs from SystemManager
Audit logs	Record audit logs from this function itself

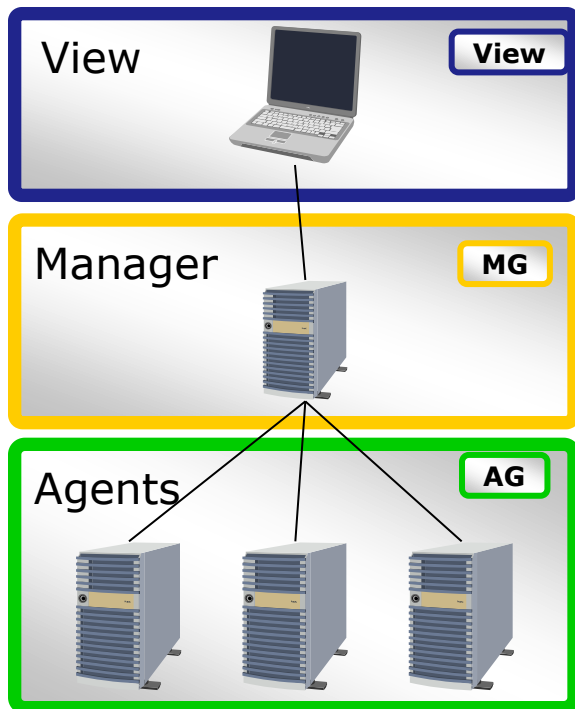
Severity	Generated ...	Generated ...	Receive Date	Receive Time	Service	Oper...	Audit ID	User
Information	2010/10/14	15:12:22	2010/10/14	15:12:22	Topology View	Delete	00001010	M.Patton
Information	2010/10/14	15:12:45	2010/10/14	15:12:45	Message Monitor	Browse	00001020	M.Patton
Information	2010/10/14	15:12:50	2010/10/14	15:12:50	Message Monitor	Modify	00001022	M.Patton
Information	2010/10/14	15:15:15	2010/10/14	15:15:15	Message Monitor	Browse	00001030	Administrator
Information	2010/10/14	15:17:49	2010/10/14	15:17:49	Message Monitor	Exec...	00001000	Administrator
Information	2010/10/14	15:17:55	2010/10/14	15:17:55	Message Monitor	Modify	00001012	Administrator
Information	2010/10/14	15:18:06	2010/10/14	15:18:06	Message Monitor	Modify	00001012	Administrator
Information	2010/10/14	15:18:28	2010/10/14	15:18:28	Message Monitor	Browse	00001020	Administrator
Information	2010/10/14	15:18:31	2010/10/14	15:18:31	Message Monitor	Modify	00001022	Administrator
Information	2010/10/14	15:20:02	2010/10/14	15:20:02	Message Monitor	Browse	00001030	M.Patton

"Who"  
operated

"What" is operated  
(apply, create, add,  
modify, delete, refer,  
execute, notify)

# MasterScope SystemManager Products Line

For various scales and configurations of system:  
MasterScope SystemManager provides "View", "Manager" and "Agent"



## ◆ MasterScope SystemManager (View)

View

**UI used for setting monitor function, and for the monitoring operations. ("View" shall be connected to Manager)**

## ◆ MasterScope SystemManager (Manager)

MG

**MasterScope SystemManager's "Manager" used to manage agent information centrally.  
(Monitor settings shall be operated via "Manager")**

## ◆ MasterScope SystemManager (Agents)

AG

**Introduces monitoring status and logs to the servers and notifies "Manager" while failure detection.**

---

## Option (for cluster environment)

HA

## ◆ MasterScope SystemManager Agent HA Option

**Constitutes multiple Managers in cluster environment, number of monitored agents as "HA Option" is required**

---

# *MasterScope*

Realize simple and integrated system operation

If you have any questions about MasterScope,  
please contact below by e-mail

**NEC: [global@soft.jp.nec.com](mailto:global@soft.jp.nec.com)**

---

 **Orchestrating** a brighter world

**NEC**