

Quick detection and recovery from abnormal application activities
[Application Performance Monitoring] [Service Level Monitoring]

The monitoring of various application processes, quick detection of faults and execution of recovery help to enhance operation stability.

Monitoring of the operation status of various applications

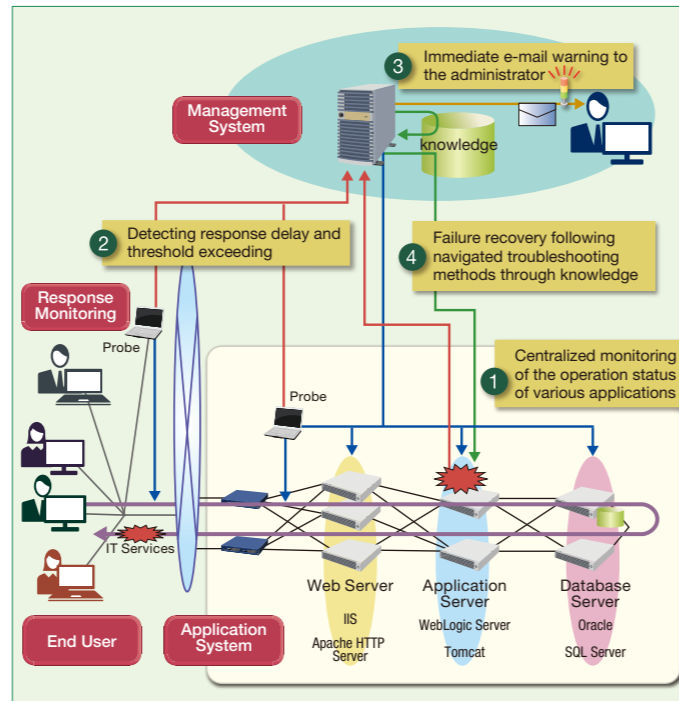
MasterScope monitors the operating status of various applications on distributed systems in multi-platform environments. MasterScope monitors based on a checklist consisting of over 100 items. This enables early detection of issues in application performance level, which is hard-to-detect with server performance monitoring alone.

Monitoring the response of IT service users

MasterScope monitors the response of IT service from standpoint of end users and detects potential troubles before receiving complaints.

Navigating the troubleshooting methods for application performance issues

NEC's proprietary know-how in troubleshooting performance issues, and knowledge drawn from the recovery history accumulated through the customer's daily operations makes fast recovery possible.



Streamline management of multi-vendor networks [Network Alert Monitoring]

MasterScope helps to enhance network stability and streamline operations by providing comprehensive support of operations associated with the network management such as network construction, fault and performances management, and network maintenance.

Visualizing the complicated network and easy grasp of equipment and network status

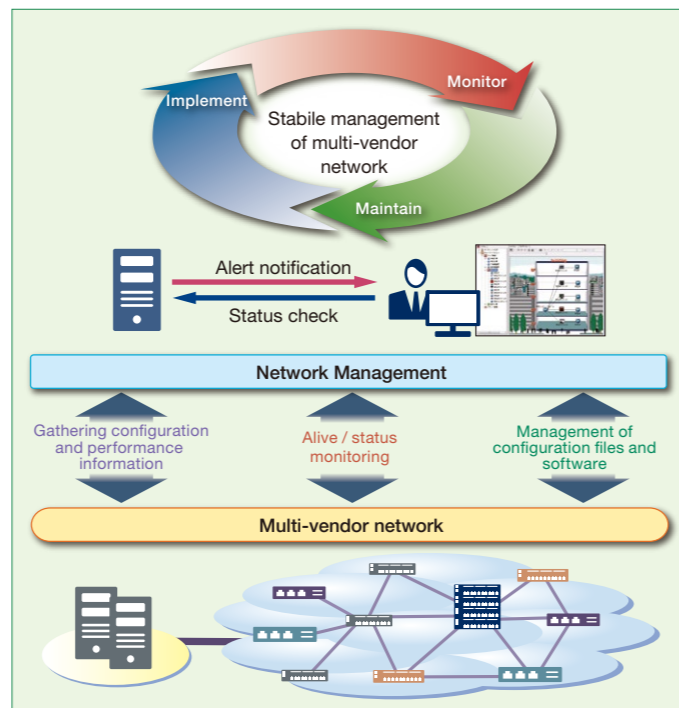
Integrated management of small to large-scale multi-vendor networks makes it easy to grasp the situation of equipment configuration visually. This makes it possible to respond quickly to equipment failures, abnormal traffic, and various other faults and failures.

Streamlining configuration and software management

Streamline and reduce the time for multi-vendor network equipment maintenance by remotely controlling backup of configuration files, generation management, and software update management.

Supporting processes from fault detection to troubleshooting

MasterScope automatically analyzes system logs (SYSLOG) sent from network equipment and displays the fault content along with troubleshooting methods. This reduces the time required for identifying root causes and speeds up the troubleshooting process.



Contact Information
NEC Corporation - Global Platform Division
Email: global@soft.jp.nec.com
For further information, please visit: www.nec.com/masterscope

• MasterScope is a registered trademark of NEC Corporation.
• Other product names and company names written in this leaflet are trademarks and registered trademarks of their respective companies.
• Information in this leaflet is subject to change without notice.



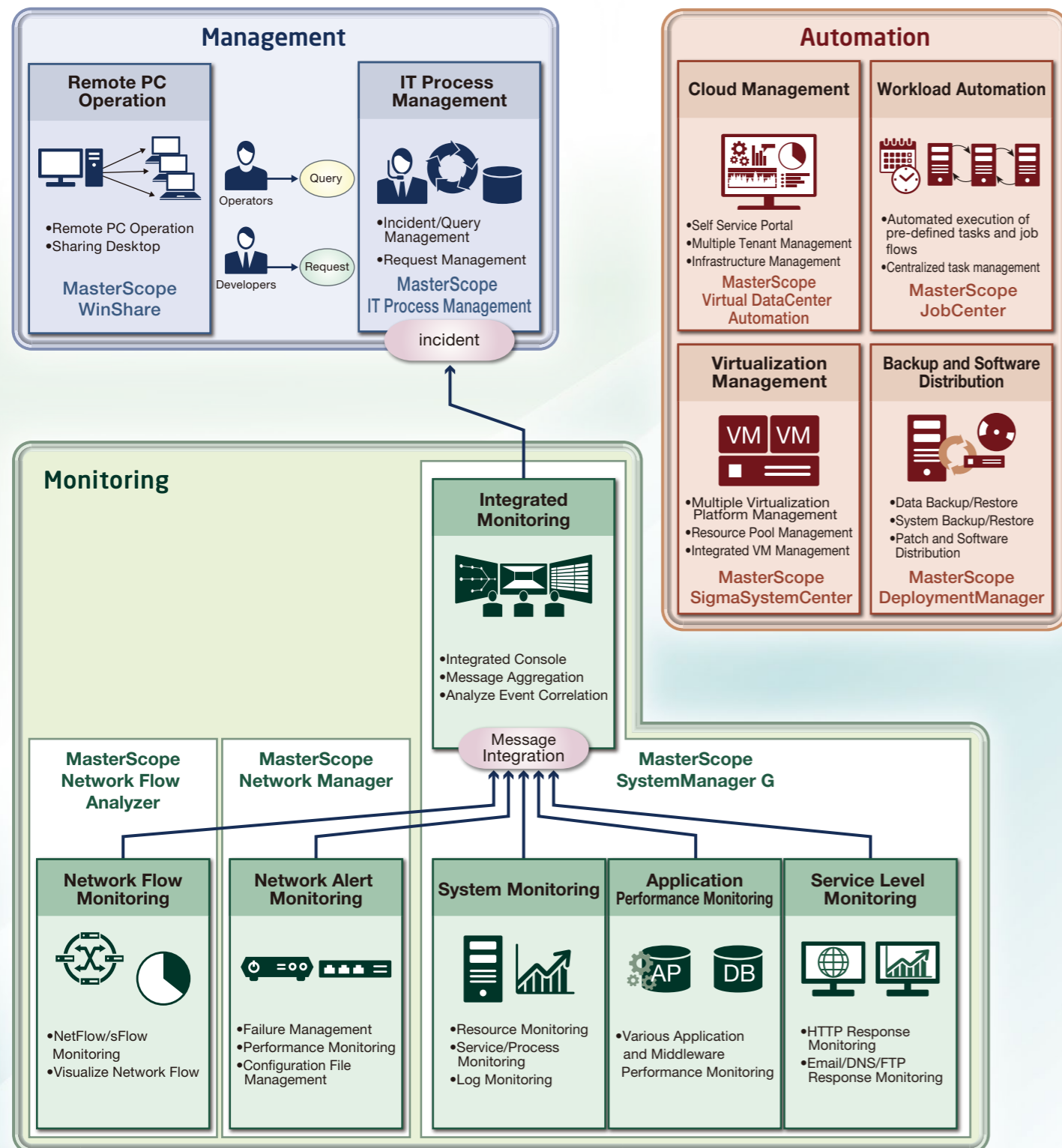
Integrated Administration Software

MasterScope

Achieving stable and efficient system operation through centralized monitoring and visualization of various ICT systems.

MasterScope Solution Map

Operation solution map achieved with MasterScope.



Centralized management of the entire system makes it possible to streamline daily monitoring work and enable immediate fault detection and troubleshooting [Integrated Monitoring]

MasterScope comprehensively manages systems in multi-vendor/multi-platform environments including in virtualization environments. The automation of the operation cycle from monitoring to root cause analysis of faults, and system recovery makes it possible to streamline monitoring work, and enables immediate fault detection and troubleshooting.

All features can be monitored from a centralized console

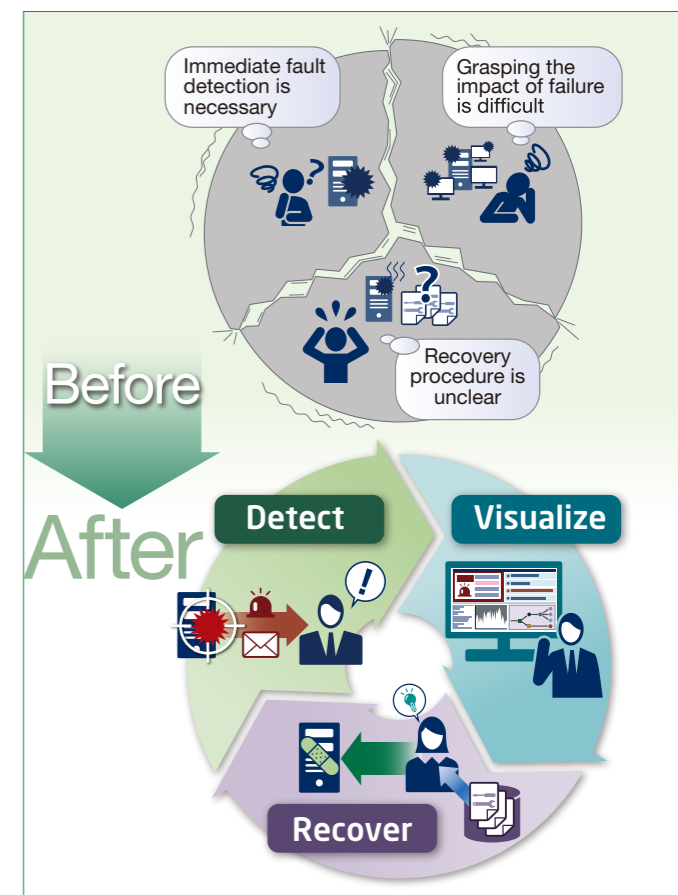
The various events that occur in an operating system can be monitored from a centralized console. The vast number of events can be grouped (by business, organization, etc.) and displayed hierarchically according to what the administrator is searching for, thereby making it easier to grasp the impact the failure will have on the system.

Guiding you toward the right decision after analyzing the root cause of failure

MasterScope automatically performs an analysis of the immense number of alarms to search out the root cause of faults, and draws from the system operation expertise accumulated through recovery processes in daily operations to help guide the user toward the right decision. This dramatically cuts down on the time and work required to complete the process from analyzing root causes to troubleshooting.

Automatically follows a registered scenario-based troubleshooting flow

Registering a troubleshooting flow in advance makes it possible to automatically execute complicated troubleshooting processes, thereby reducing the risk of errors and delays caused by manual entry. Linkage to platform management helps to optimize and automate the process of adding and deleting resources.



Server management of multi-platform environment [System Monitoring]

MasterScope centrally manages the information of failures, configuration and performance on multi-platform environment, allowing stable and efficient operation.

Server management cost saving

All-in-one system which offers the necessary features to monitor the status of a server. Servers in multi-platform environment can be managed on a single screen, thereby reducing the workload burden of the server administrator.

Early Detection and Prevention of Failure

The meticulous monitoring of the server status from multiple perspectives enables early detection and prevention of faults. Administrators can be notified of faults remotely by email and a warning light, making it possible to quickly recover the system.

Quickly pinpoint physical location of faulted server

MasterScope visually indicates the location of the server which is detected to be faulted using location information like a floor map and a rack diagram.

