

Automated execution of pre-defined tasks and job flows

Flexible yet effective operational setup not limited to any system setup or operational requirements.

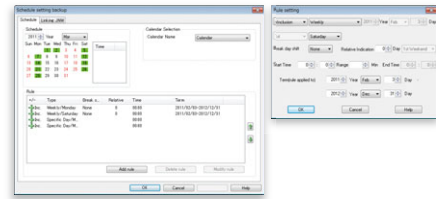
Flexible scheduling capabilities accommodating any organizational requirements

Define a calendar with operational scheduling (such as system on/off days) fully reflected. Combine the calendar with the job scheduling to meet complex operational requirements.

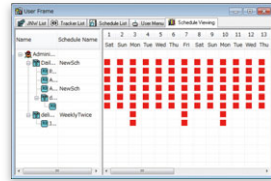
- Calendar: Define operational days of the overall system
- Schedule: Define job execution days and times

(e.g.) if the 3rd Monday of the month is a holiday, shift such Monday's tasks to become active the following day for such month.

- Schedule Setup (Green: Active, Red: Non-Active)



- Listing view of active days of all job flows



Automate complex tasks eliminating any rooms for human errors.

Product Lineup

| Product Name  | Description  |
|---|--|
| MasterScope JobCenter MG Job Management Manager                               | Management tools to manage job flows, schedules and control job executions                     |
| MasterScope JobCenter SV Job Execution Server                                 | Executes jobs submitted by JobCenter MG  |
| MasterScope JobCenter CL/Win Viewer   | GUI to setup job flows, schedules and monitor operational status                               |
| MasterScope JobCenter CL/Web Viewer (Web Browser)                             | Web Browser based control screen to monitor job execution status and control job re-executions |
| MasterScope JobCenter Definition Helper Definition Editing Option             | Option for defining, editing, and managing configuration files by using Excel and text editors |
| MasterScope JobCenter for ERP Option ERP Linkage Option                       | Option to submit jobs to SAP ERP and BI system   |
| MasterScope JobCenter for WebOTX BS Option WebOTX Batch Server Linkage Option | Option to enable WebOTX Batch Server job control   |

System Requirements

| Platform                              | Manager | Server | CL/Win | ERP Option | Definition Helper | CL/Web | WebOTX BS Option |
|---------------------------------------|---------|--------|--------|------------|-------------------|--------|------------------|
| Windows Server 2008 / 2008 R2         | ✓       | ✓      | ✓      | ✓          | ✓                 | ✓      | ✓                |
| Windows Server 2012 / 2012 R2         | ✓       | ✓      | ✓      | ✓          | ✓                 | ✓      | ✓                |
| Windows Server 2016                   | ✓       | ✓      | ✓      | ✓          | ✓                 | ✓      | ✓                |
| Windows Storage Server 2008 / 2008 R2 | ✓       | ✓      | ✓      |            | ✓                 |        |                  |
| Windows Storage Server 2012 / 2012 R2 | ✓       | ✓      | ✓      |            | ✓                 |        |                  |
| Windows Storage Server 2016           | ✓       | ✓      | ✓      |            | ✓                 |        |                  |
| Windows 10 / 8.1 / 7                  |         |        | ✓      |            | ✓                 |        |                  |
| Red Hat Enterprise Linux 5 / 6 / 7    | ✓       | ✓      |        | ✓          |                   | ✓      | ✓                |
| SUSE Linux Enterprise Server 11 / 12  | ✓       | ✓      |        | ✓          |                   |        | ✓                |
| Oracle Linux 5 / 6 / 7                | ✓       | ✓      |        | ✓          |                   |        | ✓                |
| HP-UX 11i v3                          | ✓       | ✓      |        |            |                   |        |                  |
| AIX 6.1 / 7.1                         | ✓       | ✓      |        |            |                   |        |                  |

• ✓ means "verified" and "supported".  
 • For further information, please visit: [www.nec.com/masterscope/jobcenter](http://www.nec.com/masterscope/jobcenter)

|  |  |   |  |   |
|--|--|---|--|---|
| <b>Corporate Headquarters (Japan)</b><br>NEC Corporation<br><a href="http://www.nec.com">www.nec.com</a> | <b>North America (USA)</b><br>NEC Corporation of America<br><a href="http://www.necam.com">www.necam.com</a> | <b>Asia Pacific</b><br>NEC Asia Pacific Pte. Ltd.<br><a href="http://sg.nec.com">sg.nec.com</a> | <b>Europe (EMEA)</b><br>NEC Nederland B.V.<br><a href="http://nl.nec.com">nl.nec.com</a> | <b>Greater China</b><br>NEC China Co., Ltd.<br><a href="http://cn.nec.com">cn.nec.com</a> |
|--|--|---|--|---|

Workload Automation Software

MasterScope JobCenter



# Automating systematic tasks providing a smooth, hassle-free day to day business operations

Business operations are vulnerable under manual inputs often resulting in unexpected issues to occur. Also increase in workloads eminent on IT administrators as system expansions are unavoidable as business grows. MasterScope JobCenter can resolve such issues by reducing both cost and resource requirements by automating systematic tasks providing a safe yet reliable infrastructure.

## Key Benefits

### Operational Cost Reduction

Flexible task automation depending on the operational setup and requirements of the customers.

### Preventing Human Errors

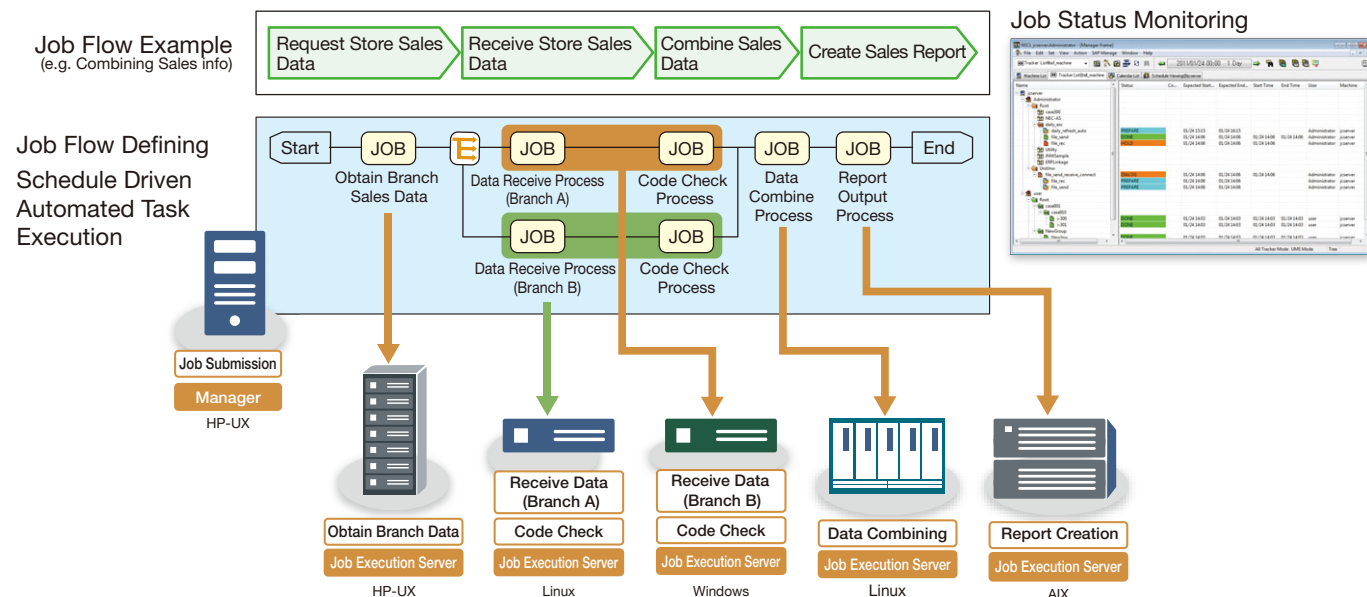
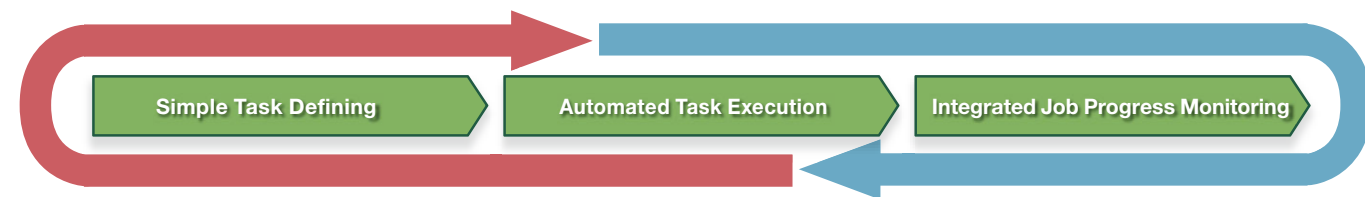
Intuitive controls and preset command objects allow a complex automation configurations to be created at ease preventing unwanted setup and execution errors.

### High Reliability

Solid track record from the numerous mission critical system installments in the past guarantees a high reliability performance within a distributed setup environment.

## Operation Overview

Depending on the operational task involved, IT administrators can adjust and set required job flows with a fixed schedule allowing integrated monitoring at all times.



## Key Features

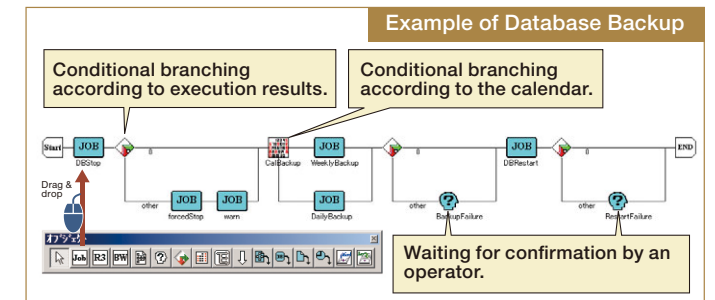
### Simple Workflow Defining

Define tasks and jobs as if you are drawing a flow chart picking task components from a huge selection of prefixed patterns allowing complex job flows to be created with ease. Job flows and parameters can be exported into Excel® format to make any adjustments simple even for a large scale environment as well.

### Define complex tasks and job flows easily with intuitive controls and prefixed control components

Create job flows with a simple drag and drop operation checking the actual functions on the fly. Layered setup allows easy flow creations even for large scaled systems compatible with SAP®.

### Workflow definition using GUI



**Reduces overall production costs by minimizing preparation and increasing productivity with simpler workflow for the operators.**

- Execution Objects: conditional branches, repetition, parallel executions, operator validation... & more
- Hold Objects: file, time, event hold patterns... & more

### Centralized Task Management

View job flows and it's progress in a list or drill down to check flow status and detailed logs when necessary.

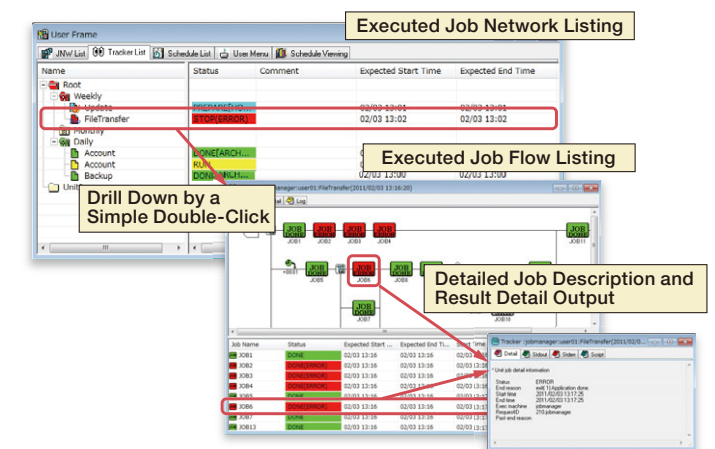
### Color Coded Job Status Enabling Glance Monitoring

Monitor the overall progress by checking the changing icon colors each associated with a status message such as "DONE", "DONE(ERROR)", "RUN", "WAIT" etc.

The view can be sorted to chronological, layered or group ordering for easier navigation in identifying potential issues.

Basic commands such as "Forced Stop", "Hold" and "Rerun" can be executed from this monitoring screen allowing swift recovery actions to be taken when necessary.

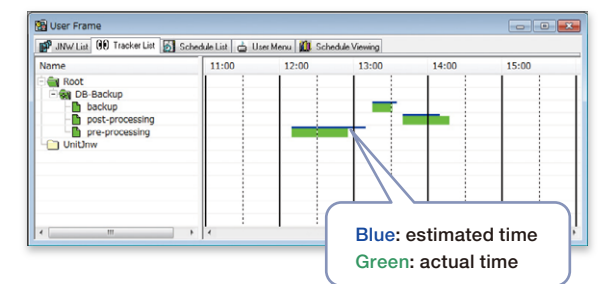
### Job Execution Log Screens



### Gantt Chart Job Status Monitoring

Allows administrators to compare the latest job progress to a pre-calculated estimated time based on past executions results. In an event of any delays being detected, alert pop ups and task cancellation can be set to prevent issues from growing any further.

### Execution Progress Tracker



**Centralized monitoring lets you know job status at a glance, so you can discover and resolve errors right when they occur.**