

Guide for using operation
logs and execution logs

JobCenter

R15.2

-
- Windows, Windows Server, Microsoft Azure, Microsoft Excel and Internet Explorer are trademarks or registered trademarks of Microsoft Corporation in the United States and other countries.
 - UNIX is exclusively licensed by The Open Group which is a registered trademark in the United States and other countries.
 - HP-UX is a trademark of Hewlett-Packard.
 - AIX is a trademark of IBM Corporation.
 - Linux is a registered trademark of Linus Torvalds in the United States and other countries.
 - Oracle Linux, Oracle Clusterware and Java are registered trademarks of Oracle and/or its affiliates.
 - Red Hat is a registered trademark of Red Hat, Inc.
 - SUSE is a registered trademark of Novell, Inc.
 - NQS is a Network Queuing System that was developed by Sterling Software for NASA Ames Research Center.
 - SAP ERP, SAP NetWeaver BW and ABAP are trademarks or registered trademarks of SAP AG.
 - Amazon Web Services is a trademark of Amazon.com, Inc. or its affiliates registered in the United States and other countries.
 - iPad and Safari are trademarks of Apple, Inc. registered in the United States and other countries.
 - All other software and hardware products mentioned herein are trademarks or registered trademarks of their respective owners.

The symbols (R), TM, and (c) are omitted in this document.

Precautions on exporting

This product (software) falls under a category of technology where establishment specified in the foreign exchange currency law is regulated. Please file necessary applications, such as permission for trade, with the Japanese government prior to exporting this product. Contact the dealer where you purchased the product or our nearest sales office for information on documents necessary for filing such applications.

Introduction

This manual describes the format of the JobCenter CL/Win operation log and job network execution log, as well as the acquisition settings from CL/Win. Note that the screens contained in this manual may differ from the actual screens.

Note that this document is subject to change without prior notice.

1. How to read the JobCenter manuals

If you are installing or upgrading JobCenter

-> Read the Installation Guide.

If you are using JobCenter for the first time

-> Read the Quick Start Guide in the order of the table of contents.

If you wish to understand the basic operating methods of JobCenter

-> Read the Basic Guide in the order of the table of contents.

If you wish to understand the construction of environments and the setting of various functions




-> Refer to the Environment Guide.

If you wish to know about other functions

-> Read the related manuals, referring to the manuals specific to the functions to be used.

2. Legend

The legend used in this manual is explained below.

	Information that you should pay attention to.
	Supplementary information about a description in the text.
	Supplementary tip about a description in the text.
Note	Explanation of a note that appears in the text.
—	The underlined parts in the descriptions for the installation window for UNIX mean inputs from a keyboard.

3. Related manuals

The following are manuals related to JobCenter. They are contained in JobCenter Media.

For information on the latest manuals, refer to the download page of the JobCenter product site.

<https://www.nec.com/en/global/prod/masterscope/jobcenter/en/support.html>

Document title	Overview
JobCenter Installation Guide	Describes how to newly install JobCenter or upgrade it.
JobCenter Quick Start Guide (Japanese only)	Describes the basic functions of JobCenter, as well as a complete set of operations, for first-time users of JobCenter.
JobCenter Basic Guide	Describes the basic functions of JobCenter, as well as how to operate it.
JobCenter Environment Guide	Describes various setting methods on the construction of environments required for using JobCenter, transferring of environment, linkage with other products, etc.
JobCenter Guide for using NQS function (Japanese only)	Describes methods of using NQS functions, the basis of JobCenter, from JobCenter.
JobCenter Guide for using operation logs and execution logs	Describes the functions for acquiring operation logs and job network execution logs from JobCenter CL/Win, as well as how to set the functions.
JobCenter Command Reference	Describes JobCenter commands for performing job network entry and execution state referencing, etc. from the command line like a GUI.
JobCenter Guide for using Cluster function	Describes linkage methods for operating JobCenter in the cluster system.
JobCenter Guide for using Helper function (Japanese only)	Describes the following three functions that enable efficient operation of JobCenter using Excel: JobCenter Definition Helper (definition information maintenance), JobCenter Report Helper (business report creation), and JobCenter Analysis Helper (performance analysis).
JobCenter Guide for using SAP function (Japanese only)	Describes how to link JobCenter and SAP.
JobCenter Guide for using WebOTX Batch Server linkage function (Japanese only)	Describes how to link JobCenter and WebOTX Batch Server.
JobCenter Guide for Using the Web Function	Describes JobCenter CL/Web that is a function to monitor jobs by using a web browser.
JobCenter Guide for using the text definition function (Japanese only)	Describes how to define a job network, schedule, calendar, custom job template by using a text file.
JobCenter Guide for upgrading the version and applying the patches in a cluster environment (Japanese only)	Describes how to upgrade the version of JobCenter and apply the patches in a cluster environment.
JobCenter R15.2 Release Notes	Provides the information specific to JobCenter R15.2.

4. Revision History

Edition	Date of revision	Item	Format	Contents of revision
1	July 20, 2018	New	-	First Edition

Table of Contents

Introduction	iii
1. How to read the JobCenter manuals	iv
2. Legend	v
3. Related manuals	vi
4. Revision History	vii
1. Overview of the Operation and Execution Log Function	1
1.1. Configuration of the Operation and Execution Log Function	2
2. Operation and Execution Logs	3
2.1. Operation Logs	4
2.1.1. Storage Path (Windows Version)	4
2.1.2. Storage Path (UNIX Version)	4
2.2. Execution Logs	5
2.2.1. Storage Path (Windows Version)	5
2.2.2. Storage Path (UNIX Version)	5
3. Acquisition Settings for Operation and Execution Logs	6
3.1. "System Config" Dialog	7
3.2. Setting Items	8
3.3. Creating Log Backup Files	9
4. Log Format	10
4.1. Operation Logs	11
4.1.1. LocalTime Field	11
4.1.2. UserName Field	11
4.1.3. MachineName Field	11
4.1.4. TargetType Field	12
4.1.5. TargetName Field	12
4.1.6. Operation Field	14
4.2. Execution logs	17
4.2.1. LocalTime Field	17
4.2.2. UserName Field	17
4.2.3. TrackerName Field	17
4.2.4. EventType Field	18
4.2.5. EndStatus Field	18
4.2.6. StartTime Field	18
4.2.7. EndTime Field	18
4.2.8. Output of an Execution Log When Executing a Job Network That Is Part of a Child-Parent Relationship	18
5. Notes and Restrictions	20
5.1. Note about Character Encoding	21
5.2. Note about the TZ System Environment Variable (Windows Version)	22
5.3. Notes When Configuring a Machine Group	23
6. Differences from Previous Versions	24
6.1. Changes in R15.2	25
6.2. Changes in R15.1	28
6.3. Changes in R14.2	31
6.4. Changes in R13.1	33
6.5. Changes in R12.10	35
6.6. Changes in R12.9	37
6.7. Changes in R12.8	39
6.8. Changes in R12.6	41
6.8.1. Differences Related to the TargetName Field	41
6.8.2. Differences Related to the Operation Field	41
7. Correspondence between On-screen Operations and Operation Logs	44
7.1. User Frame	45
7.1.1. [JNW List] Tab	45

7.1.2. [Tracker List] Tab	48
7.1.3. [Schedule List] Tab	58
7.1.4. [Trigger List] Tab	59
7.1.5. [User Menu] Tab	61
7.1.6. [Release Plan List] Tab	61
7.1.7. [System Config] Dialog	62
7.1.8. [User Config] Dialog	62
7.1.9. Job Network Flow Window	63
7.2. Manager Frame	70
7.2.1. [Calendar List] Tab	70
7.2.2. [Custom Job Definition List] Tab	70
7.3. Other Operations	73
7.3.1. Login and Logout	73
7.3.2. [Permission] Dialog	74
7.3.3. [Machine group] Dialog	75
7.3.4. Upload and Download JPF	76

List of Tables

4.1. Relationship between Operation Target and targetType Field	12
4.2. Relationship Between the Operation Target and TargetName Field	13
4.3. targetType and Data Output to the Operation Field	14
4.4. Correspondence between the Job Network Status and the EventType Field	18
4.5. Correspondence between the Termination Status of Job Network and the EndStatus Field	18
6.1. All Operation Log Types in R15.2	25
6.2. All Operation Log Types in R15.1	28
6.3. All Operation Log Types in R14.2	31
6.4. All Operation Log Types in R13.1	33
6.5. All Operation Log Types in R12.10	35
6.6. All Operation Log Types in R12.9	37
6.7. All Operation Log Types in R12.8	39
6.8. Relationship Between the Operation and the TargetName Field	41
6.9. Relationship Between Operation and the Operation Field	41
6.10. List of Operations That Can Be Executed for Each Part (1)	42
6.11. List of Operations That Can Be Executed for Each Part (2)	42

1 Overview of the Operation and Execution Log Function

The JobCenter operation and execution log function saves the records (operation logs) of the operations that the operator performs from CL/Win, a command line, or the server environment settings, and the records (execution logs) of the starting and termination of the job network on MG/SV.

1.1. Configuration of the Operation and Execution Log Function

The JobCenter operation and execution log function consists of the operation log output function to record operations performed from JobCenter CL/Win, a command line, or the server environment settings, and the execution log output function to record the history of job network executions on the JobCenter server.

The configuration example of CL/Win operations and job network execution is shown in [Figure 1.1, "Configuration of the Operation and Execution Log Function"](#).

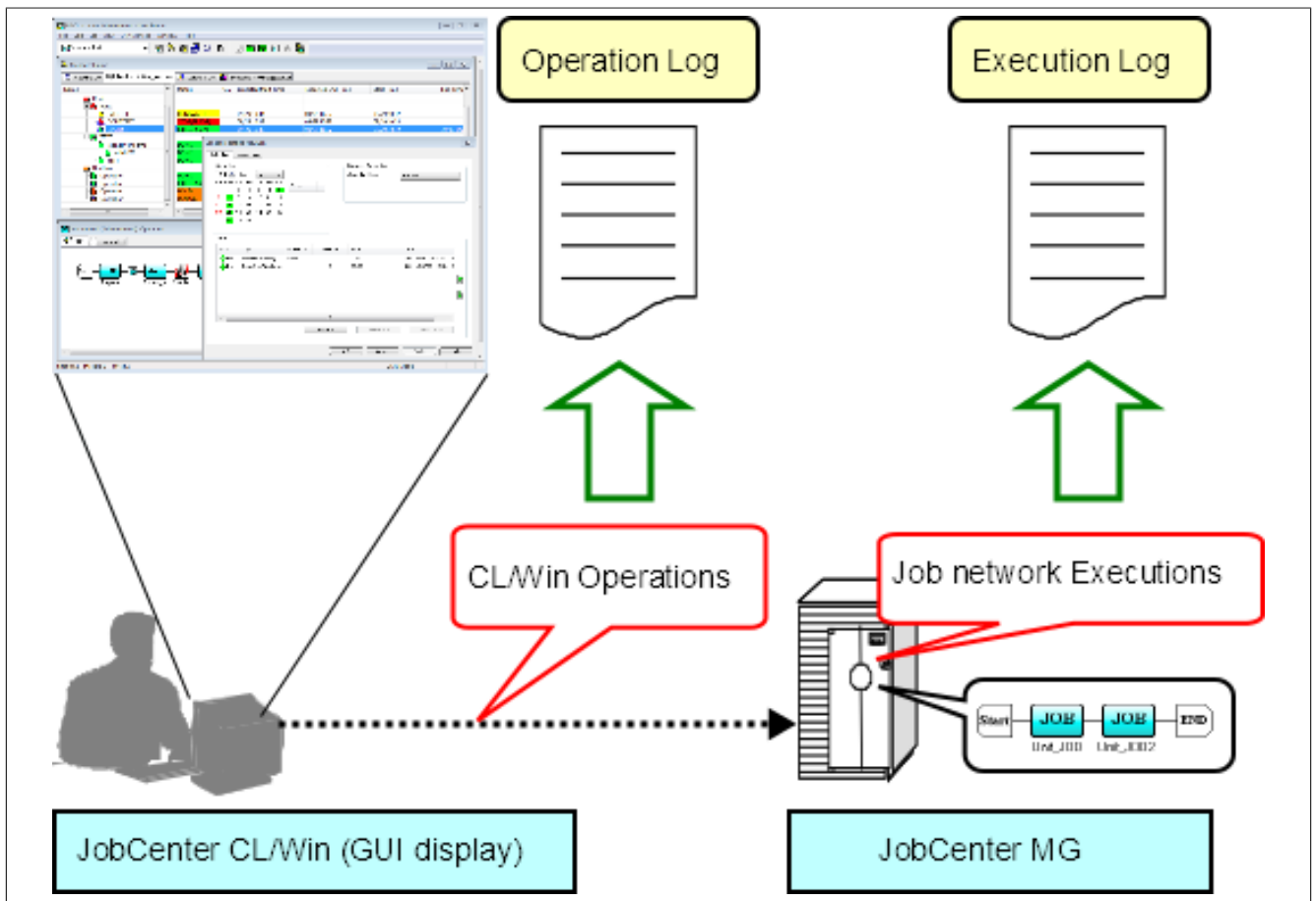


Figure 1.1. Configuration of the Operation and Execution Log Function

When a user performs an operation, the operation date and time, the name of the host from which the operation is performed, the execution user name, and/or a description of the operation are output as an operation log depending on the executed operation.

When a job network is started, the start of job network as well as the start time and the job network owner name information are output as execution log.

When a job network is terminated, termination status (normal, warning, or error) information is output to the execution log in addition to the information recorded when the job network started.

2 Operation and Execution Logs

This chapter provides an overview of operation and execution logs output by JobCenter and shows their storage paths.



- A character string is displayed in the <IP address> section of the operation and execution log storage path. This character string consists of eight characters, each two of which represent one of the four octets of the relocatable IP address assigned to the cluster site where JobCenter operates in hexadecimal notation.
- The %JobCenterDatabaseDirectory% section in the operation and execution log storage path indicates the path where the JobCenter shared database is located.
- The %InstallDirectory% section of the operation and execution log storage path indicates the path for the directory where the Windows version of JobCenter MG/SV is installed. This path can be specified when JobCenter is installed. The default value is "C:\JobCenter\SV".

2.1. Operation Logs

The following information is output as an operation log for operations performed from CL/Win, a command line, or the server environment settings.

- Operation execution time
- Operation execution user name
- Host from which the operation is performed
- Type of operation target
- Operation target name
- Description of operation

The operation log is output in the CSV format. One line is output for each operation. For an overview and format information of each output item, refer to [Section 4.1, "Operation Logs"](#).

The "YYYYMMDD" section of the log file name indicates the date when the log is output. For example, this section is "20070101" if the log was output on January 1, 2007.

2.1.1. Storage Path (Windows Version)

The operation log is stored at the following location in the Windows version.

- For the local site

```
%InstallDirectory%\spool\log\record\op\record_op_YYYYMMDD.csv
```

- For the cluster site

```
%JobCenterDatabaseDirectory%\spool\log\record\op\record_op_YYYYMMDD.csv
```



■ %InstallDirectory% represents the installation directory for JobCenter. The default is C:\JobCenter\SV.

■ %JobCenterDatabaseDirectory% represents the database directory on the shared disk specified in cjcbsite.

2.1.2. Storage Path (UNIX Version)

The operation log is stored at the following location in the UNIX version.

- For the local site

```
/usr/spool/nqs/log/record/op/record_op_YYYYMMDD.csv
```

- For the cluster site

```
/usr/spool/nqs/<IP address>/log/record/op/record_op_YYYYMMDD.csv
```

2.2. Execution Logs

The following information is output to the execution log for job networks executed on the JobCenter server.

- Start (termination) time
- Job network owner name
- Job network status

The execution log is output in the CSV format. One line is output every time a job network is started or terminated. For an overview and format information of each output item, refer to [Section 4.2, "Execution logs"](#).

The "YYYYMMDD" section of the log file name indicates the date when the log is output. For example, this section is "20070101" if the log was output on January 1, 2007.

2.2.1. Storage Path (Windows Version)

The execution log is stored at the following location in the Windows version.

- For the local site

```
%InstallDirectory%\spool\log\record\exe\record_exe_YYYYMMDD.csv
```

- For the cluster site

```
%JobCenterDatabaseDirectory%\spool\log\record\exe\record_exe_YYYYMMDD.csv
```



- %InstallDirectory% represents the installation directory for JobCenter. The default is C:\JobCenter\SV.
- %JobCenterDatabaseDirectory% represents the database directory on the shared disk specified in cjcbsite.

2.2.2. Storage Path (UNIX Version)

The execution log is stored at the following location in the UNIX version.

- For the local site

```
/usr/spool/nqs/log/record/exe/record_exe_YYYYMMDD.csv
```

- For the cluster site

```
/usr/spool/nqs/<IP address>/log/record/exe/record_exe_YYYYMMDD.csv
```

3 Acquisition Settings for Operation and Execution Logs

This chapter describes how to specify the acquisition settings for operation and execution logs from the JobCenter CL/Win screen.

3.1. "System Config" Dialog

Use the "System Config" dialog in JobCenter CL/Win to specify the acquisition settings for operation and execution logs.

Select [Set] - [System Config] on the menu bar. Use the [Operation&Execute Log] tab in the "System Config" dialog to specify the settings.

It is necessary to log in with an account possessing administrative authority (UMS Mode) to change the settings.

For details about each setting item, refer to [Section 3.2, "Setting Items"](#).

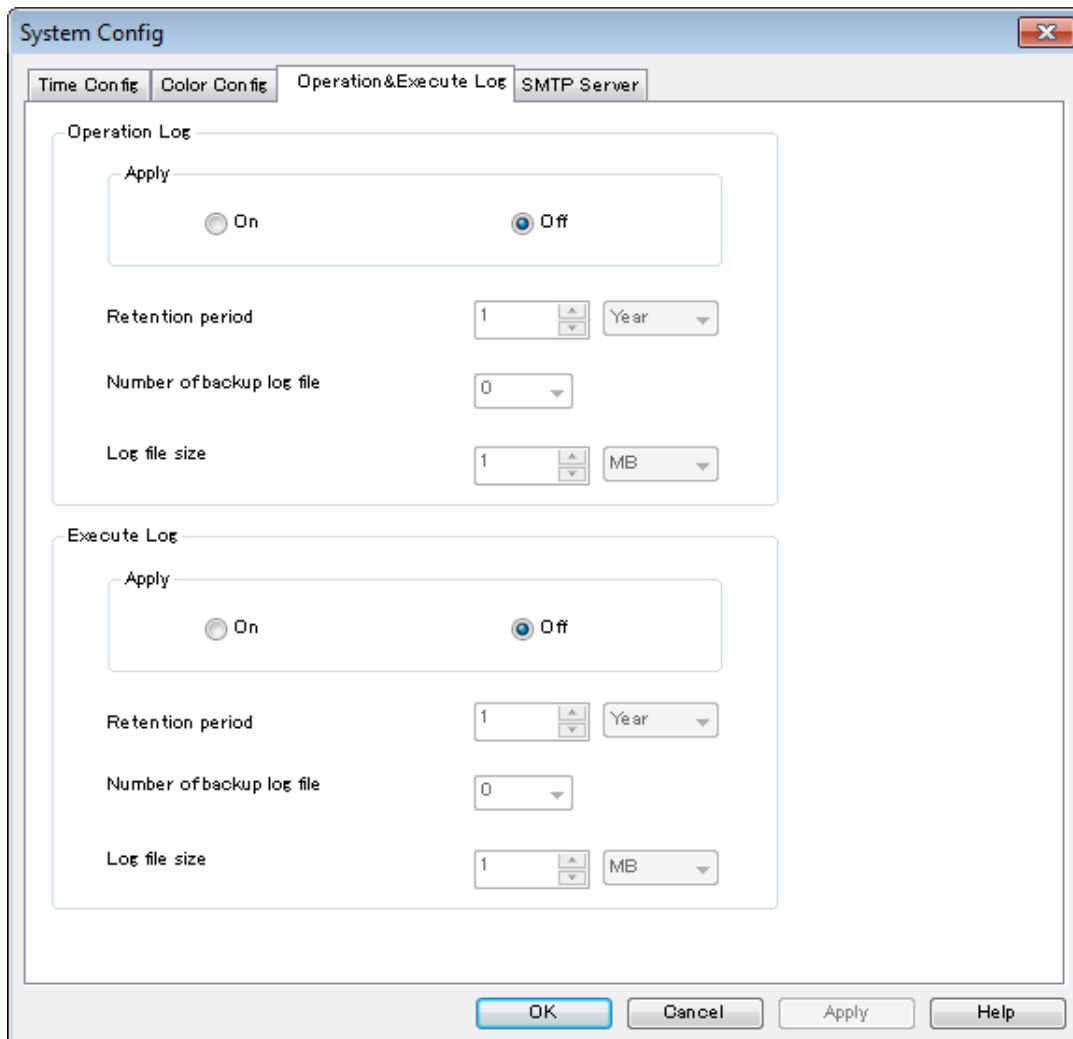


Figure 3.1. [Operation & Execute Log] Tab



The acquisition settings for operation and execution logs can be changed by the command. For details, refer to the description of the setcfg sub command in <Command Reference>Section 3.33, "jc_syscfg (Browsing and changing the system environment setting)".

3.2. Setting Items

The following items can be specified from the [Operation & Execute Log] tab in the "System Config" dialog.

■ Creation

Specify whether to acquire operation and execution logs.

The default setting is [NO].

YES	Operation and execution logs are acquired.
NO	Operation and execution logs are not acquired.

When [YES] is selected, you can specify the retention period, the number of backup files, and the maximum size of one file.

■ Retention period

Specify for how many days logs are saved. The settable range is from 1 to 365 days or from 1 to 5 years. Specify an appropriate value by inputting both a numerical value and unit. If a number of years between 1 and 5 is specified, logs are saved for the number of days calculated by multiplying the number of years by 365.

The default setting is one year.

Logs are automatically deleted when the retention period expires.

■ Number of backup files

Specify how many log backup files are created. You can specify a value between 0 and 9. No backup file is created if you specify 0. The default setting is 0.

For details about log file backup processing, refer to [Section 3.3, "Creating Log Backup Files"](#).

■ Maximum file size

Specify the maximum size of a log file. The settable range is from 1 to 1024 kilobytes or from 1 to 1024 megabytes. Specify an appropriate value by inputting both a numerical value and unit. The default setting is [1MB].

3.3. Creating Log Backup Files

If the size of an operation or execution log file exceeds the specified maximum size, that log file is saved under another name and subsequent logs are output to a new file. Backup files for operation and execution logs are saved under the names below.

Operation logs	record_op_YYYYMMDD_n.csv (n = 1,2,...,9)
Execution logs	record_exe_YYYYMMDD_n.csv (n = 1,2,...,9)

The "YYYYMMDD" section of the log file name indicates the date when the log is output. For example, this section is "20070101" if the log is output on January 1, 2007. The number in the "_n" section indicates how recent that backup file is in reverse chronological order. If the number of existing backup files is the same as the value specified in "Number of backup files," no new backup file is created.

An overview of backup file creation processing is shown below.

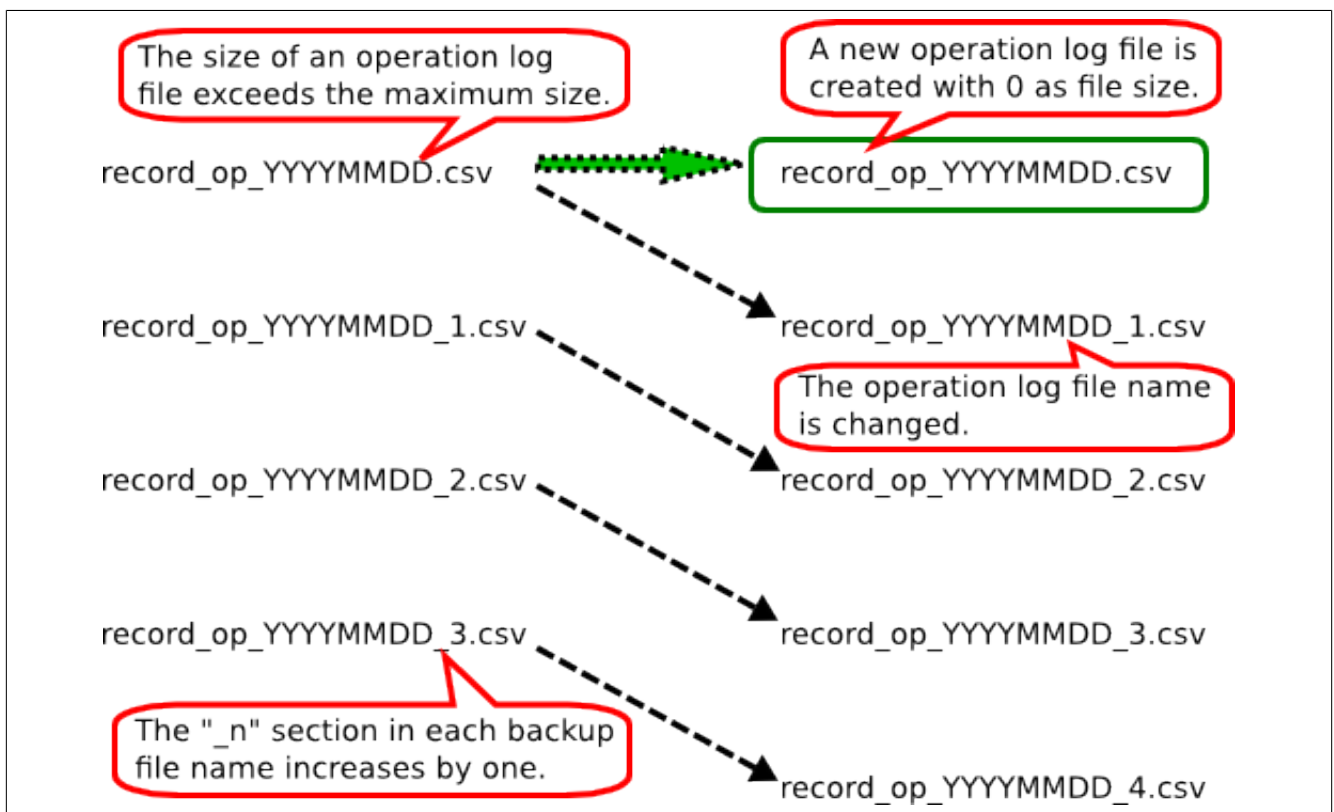


Figure 3.2. Creating Log Backup Files

If the size of an operation log file (record_op_YYYYMMDD.csv) exceeds the maximum size when there are three backup files, the "_n" section in each backup file name increases by one.

The operation log file name is changed to record_op_YYYYMMDD_1.csv and saved as the latest backup file. A new operation log file is created when backup processing is complete.

4 Log Format

This chapter describes the format of operation and execution logs.

4.1. Operation Logs

The operation log contains one line for each operation. The line consists of the following six fields separated by commas.

```
<LocalTime>,<UserName>,<MachineName>,<TargetType>,<TargetName>,<Operation>
```

Let's assume the example of CL/Win operation below.

- Operation time: 10:30:30:000 on January 1, 2007 (JST)
- Operation execution user: testuser
- Connection source host name: testclient
- Description of operation: Create job network "testjnw"

If the above operation is performed, the data shown below is output to the operation log.

```
2007/01/01 10:30:30.000(JST),testuser,testclient,JNW,testjnw,create
```

Each of these fields is described below.

4.1.1. LocalTime Field

The date and time when the operation is performed is output to this field.

The local time of the JobCenter server (for CL/Win operations, the JobCenter server connected from CL/Win) is output as the date and time. For example, if the time zone of the server is Japan Standard Time (JST) and the operation is performed at 10:30:30:000 on January 1, 2007, the data below is displayed in the LocalTime field.

```
2007/01/01 10:30:30.000(JST)
```

"(JST)" displays the time zone name of the server. "(Tokyo (Standard Time))" is output to this section if "(GMT+09: 00) Osaka, Sapporo, Tokyo" is selected as the time zone in the Windows version.

To display the time zone name in alphabetical notation, set the system environment variable TZ. For details, refer to [Section 5.2, "Note about the TZ System Environment Variable \(Windows Version\)"](#).

4.1.2. UserName Field

The name of the user who executed the operation is output to this field.

This user is the same as that in "user who logged into the JobCenter server". Even if a user who has the authority to access other users' job networks and trackers performs the operation from another user's user frame, the user who performs the operation is output.

4.1.3. MachineName Field

This field displays the name of the client that executed the operation (the name of the computer connecting to the JobCenter server). If reverse resolution of the connection source computer name is not possible, its IP address is displayed in this field.

For operations performed from a command line or server environment settings, the name of the machine on which the operation is performed.

4.1.4. TargetType Field

The type of target operation to be executed is output to this field. The operation targets and the character strings output to the TargetType field are listed in the table below.

Table 4.1. Relationship between Operation Target and TargetType Field

Operation target	TargetType
Login, logout	USER
Group	GRP
Job network	JNW
Shortcut	SCT
Schedule	SCH
Schedule, schedule group	SCHCTRL
Trigger	TRG
Target text logs	TARGET_TEXTLOG
Release plan	PLAN
Calendar	CAL
Tracker	TRK
User environment settings, default parameters	UCONF
System environment settings, machine group setting	SCONF
Permission setting	MCONF
Command line, server environment settings	CMD
JPF upload and download	JPF
Custom job definition group	CUSTOMGRP
Custom job definition	CUSTOM

4.1.5. TargetName Field

The name of the operation to be executed from the client is output to this field using the abbreviations shown in the table below.

The name is output to the TargetName field.	GRP (group)
	JNW (job network)
	SCT (shortcut)
	SCH (schedule, schedule group)
	TRG (Trigger)
	TARGET_TEXTLOG (Target text log)
	PLAN (Release plan)
	CAL (calendar)
	TRK (tracker)
	UCONF (default parameters)
	SCONF (system environment settings, machine group setting)
	CUSTOMGRP (Custom job definition group)

	CUSTOM (Custom job definition)
A hyphen (-) is output to the TargetName field.	USER (login/logout)
	UCONF (user environment settings)
	MCONF (permission setting)
	JPF (JPF file upload and download)
An execution module name is output to the TargetName field.	CMD (command line, server environment settings)

Operation targets on CL/Win and data output to the TargetName field is listed in [Table 4.2, "Relationship Between the Operation Target and TargetName Field"](#).

Table 4.2. Relationship Between the Operation Target and TargetName Field

Operation target	TargetName
Group	Group name
Job network	JNW name
Shortcut	JNW name at the shortcut location
Component (unit job, ERP job, BI job, PC job, UCXSingle job, WOBS job, custom job, dialog, event transmission, event reception)	JNW name/component name
Component (continuity)	JNW name
JNW tracker	JNW name.YYYYMMDDhhmmss
Component tracker (unit job, ERP job, BI job, PC job, UCXSingle job, WOBS job, custom job, dialog, event transmission, event reception)	JNW name.YYYYMMDDhhmmss/component name
Component tracker (continuity, sub JNW waiting, job waiting, file waiting, time waiting)	JNW name.YYYYMMDDhhmmss
Schedule	Schedule name
Schedule group	Schedule group name
Trigger	Trigger name
Target text log	Target text log name
Release time	YYYYMMDDhhmmss
Calendar	Calendar name
Default parameter (JNW)	param
Default parameter (unit job)	unitjob
Default parameter (ERP job)	sapjob
Default parameter (BI job)	bwjob
Default parameter (PC job)	pcjob
Default parameter (UCXSingle job)	ucxsjob
Default parameter (dialog)	dialog
Default parameter (event transmission)	recvevent
Default parameter (event reception)	sendevent
System environment settings	conf
Machine group setting	Member machine name
Command line, server environment settings	Execution module name

Custom job definition group	Custom job definition group name
Custom job definition	Custom job definition name

For information on specific relationships between actual operations on the JobCenter CL/Win screen and output results in the TargetName field, refer to [Chapter 7, 「Correspondence between On-screen Operations and Operation Logs」](#).

4.1.6. Operation Field

The type of executed operation is output to this field. Combinations of each TargetType and the data output to the Operation field are listed in [Table 4.3, “TargetType and Data Output to the Operation Field”](#).

Table 4.3. TargetType and Data Output to the Operation Field

TargetType	Operation	Actual operation
USER	login	Log in
	logout	Log out
GRP	create	Create
	delete	Forcibly delete
	rename	Rename
	copy	Copy
	move	Move, normally delete
	modify	Modify comment
JNW	create	Create
	delete	Delete
	submit	Immediately submit
	rename	Rename
	copy	Copy
	assign	Move under root
	move	Move
	modify	Save flow, change parameter
SCT	create	Create
	delete	Delete
	move	Move
SCH	create	Create
	delete	Delete
	modify	Edit rule, associate JNW
SCHCTRL	create	Create
	regist	Register schedule with group
	rename	Rename
	delete	Delete
	on sched	Enable schedule
	on group	Enable schedule group
	off sched	Disable schedule
	off group	Disable schedule group

Log Format

	move sched	Move schedule
	move group	Move schedule group
	comment set	Comment
TRG	create	Create
	delete	Delete
	rename	Rename
	modify	Modigy comment, edit startup conditions, relate JNW
	on trigger	Enable trigger
	off trigger	Disable trigger
TARGET_TEXTLOG	create	Create
	delete	Delete
	rename	Rename
	modify	Edit target text log
PLAN	create	Create
	delete	Delete
	copy	Create from master definition, copy
	modify	Upload, save (release plan), modify time, modify comment
	submit	Release immediately
	on plan	Enable
	off plan	Disable
CAL	create	Create
	delete	Delete
	modify	Edit rule
TRK	skip	Skip
	noskip	Cancel skip
	hold	Hold
	release	Cancel hold
	suspend	Suspend
	resume	Cancel suspension
	estop	Forcibly stop
	forcestart	Forcibly start
	rerun	Retry
	restart	Restart
	freecontrol	Release control
	start_immediate	Execute (immediatly)
	start_asap	Execute (ASAP)
	ok	Accept dialog component
	error	Reject dialog component
	modify	Modify wait time

	statusdone	Change the component status from terminated with error or warning to normally terminated
	archive	Manually archive tracker
	before	Retry from the location of the error
	after	Skip the location of the error
UCONF	modify	Change the user environment setting
	defmodify	Change the default parameter
SCONF	modify	Change the system environment setting
	addmac	Add to machine group
	deletemac	Delete from the machine group
MCONF	modify	Change the permission setting
CMD		* Output the additional information (such as a subcommand name and parameter).
JPF	upload	Upload a JPF file.
	download	Download a JPF file.
	trkget	Download the JPF file of tracker information.
CUSTOM	create	Create
	delete	Delete
	rename	Rename
	copy	Copy
	assign	Move, cut
	modify	Modify script, modify parameter, modify comment
CUSTOMGRP	create	Create
	delete	Forcibly delete
	rename	Rename
	copy	Copy
	move	Move, cut, normally delete
	modify	Modify comment

For information on specific relationships between actual operations on the JobCenter CL/Win screen and output results in the Operation field, refer to [Chapter 7, 「Correspondence between On-screen Operations and Operation Logs」](#) .

4.2. Execution logs

The execution log is output when a job network is started or terminated. The execution log contains a line for the start or termination of a job network. The line consists of the following seven fields separated by commas.

```
<LocalTime>,<UserName>,<TrackerName>,<EventType>,<EndStatus>,<StartTime>,<EndTime>
```

Let's assume the example below.

- Start time: 10:30:30:000 on January 1, 2007 (JST)

- Job network execution user: testuser

- Job network name: testjnw

If the above job network is started, the data shown below is output to the execution log.

```
2007/01/01 10:30:30.000(JST),testuser,testjnw.20070101013030,JNWSTART,-,2007/01/01
10:30:30.000(JST),-
```

If this job is terminated with the following conditions,

- End time: 13:00:00:000 on January 1, 2007 (JST)

- Termination status: Normally terminated

the data shown below is output to the execution log.

```
2007/01/01 13:00:00.000(JST),testuser,testjnw.20070101013030,JNWEND,DONE,2007/01/01
10:30:30.000(JST),2007/01/01 13:00:00.000(JST)
```

Each of these fields is described below.

4.2.1. LocalTime Field

The date and time when the job network is started or terminated is output to this field.

The local time of the computer that submits the job network is output. Details about the format are the same as the LocalTime field in the operation log.

4.2.2. UserName Field

The name of the executed job network owner is output to this field.

For example, if user A, who has the authority to execute user B's job networks, executes a job network from user B's user frame, [user B], who is the owner of the job network, is output to the UserName field.

4.2.3. TrackerName Field

The tracker ID of the executed job network is output to this field.

The job network name and the start time are output in the following format as the tracker ID.

```
JNW name.YYYYMMDDhhmmss
```

Here, the local time of the server that executes the JNW is output at GMT (calculated by subtracting 9 hours from Japan Standard Time) to the time section (YYYYMMDDhhmmss).

Let's assume the example below.

■ Start time: 10:30:30:000 on January 1, 2007 (JST)

■ Job network name: testjnw

In this case, the following data is output.

```
testjnw.20070101013030
```

4.2.4. EventType Field

The status of the job network is output to this field.

The meaning of each value is shown in the table below.

Table 4.4. Correspondence between the Job Network Status and the EventType Field

JNWSTART	Job network start time
JNWEND	Job network termination time

4.2.5. EndStatus Field

The termination status of the job network is output to this field.

A hyphen (-) is output to this field when the job network starts.

The meanings of the values in the EndStatus field are shown in the table below.

Table 4.5. Correspondence between the Termination Status of Job Network and the EndStatus Field

DONE	Normal termination
WDONE	Termination with a warning
EDONE	Termination with an error

4.2.6. StartTime Field

The date and time when the job network is started is output to this field.

"000" is always displayed in the milliseconds section.

4.2.7. EndTime Field

The date and time when the job network is terminated is output to this field.

"000" is always displayed in the milliseconds section.

A hyphen (-) is output to this field when the job network starts.

4.2.8. Output of an Execution Log When Executing a Job Network That Is Part of a Child-Parent Relationship

If the started or terminated job network is a sub job network included in another job network, the execution log treats the information as one job network start or termination.

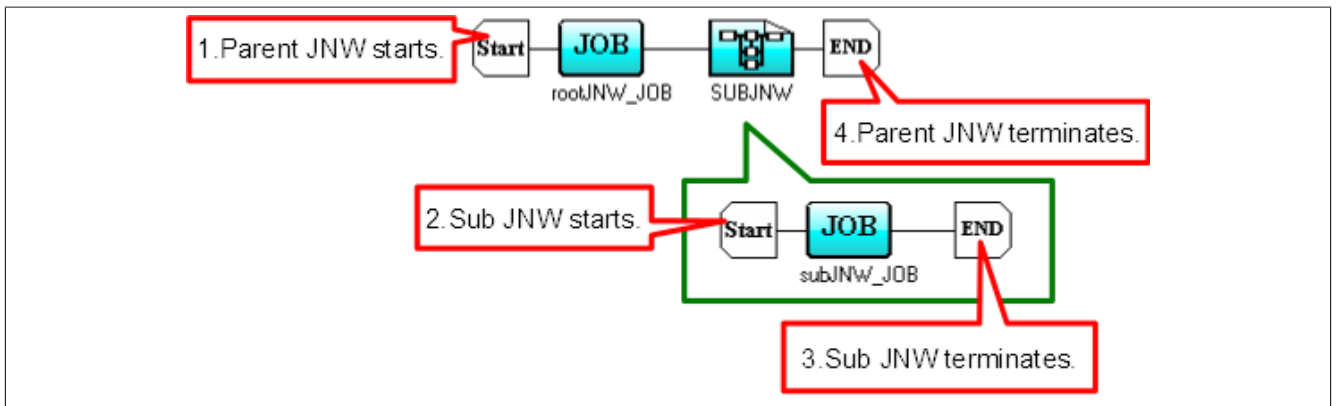


Figure 4.1. Job Network Containing a Child-Parent Relationship

In the example in [Figure 4.1, “Job Network Containing a Child-Parent Relationship”](#), parent job network rootJNW contains sub job network subJNW. If a job network starts, the following processing is performed in the order shown.

1. The parent job network starts.
2. The sub job network starts.
3. The sub job network terminates.
4. The parent job network terminates.

The following data is output to the execution log in this case.

```
... ,rootJNW.20070101013030,JNWSTART,-, ...
... ,rootJNW:subJNW.20070101013030,JNWSTART,-, ...
... ,rootJNW:subJNW.20070101013030,JNWEND,DONE, ...
... ,rootJNW.20070101013030,JNWEND,DONE, ...
```

5 Notes and Restrictions

This chapter describes items to note when using the operation and execution log function.

5.1. Note about Character Encoding

In the UNIX version of JobCenter, the character encoding specified during setup (when the nssetup command is executed) is used for operation and execution logs.

In the Windows version of JobCenter, SJIS (shift JIS) is used as the character encoding.

5.2. Note about the TZ System Environment Variable (Windows Version)

In the Windows version of JobCenter, "(Tokyo (Standard Time))" is displayed in the time zone section of the time output to operation and execution logs. To display "(JST)" in this section, specify the following values.

Variable name	TZ
Value	JST-9

Windows must be restarted to reflect the added system environment variables.

5.3. Notes When Configuring a Machine Group

If a machine group is configured, the settings for the operation and execution logs on each member machine are the same as those for the scheduler machine. You cannot use settings specific to each member machine.

To change the settings, use the “System Config” dialog ([Operation&Execute Log] tab) in the scheduler machine.

6 Differences from Previous Versions

This chapter shows differences in the operation log format between the current version and previous versions.

6.1. Changes in R15.2

In R15.2, the number of operation types that are output to the operation log is the same as that in earlier versions.

Table 6.1. All Operation Log Types in R15.2

TargetType	Operation	Actual operation	R15.2 or later
USER	login	Log in	
	logout	Log out	
GRP	create	Create	
	delete	Forcibly delete	
	rename	Rename	
	copy	Copy	
	move	Move, normally delete	
	modify	Change comment	
JNW	create	Create	
	delete	Delete	
	submit	Immediately submit	
	rename	Rename	
	copy	Copy	
	assign	Move under root	
	move	Move	
	modify	Save flow, change parameter	
SCT	create	Create	
	delete	Delete	
	move	Move	
SCH	create	Create	
	delete	Delete	
	rename	Rename	
	modify	Edit rule, relate JNW	
SCHCTRL	create	Create	
	regist	Register schedule with group	
	rename	Rename	
	delete	Delete	
	on sched	Enable schedule	
	on group	Enable schedule group	
	off sched	Disable schedule	
	off group	Disable schedule group	
	move sched	Move schedule	
	move group	Move schedule group	
	comment set	Add comment	
TRG	create	Create	

Differences from Previous Versions

TargetType	Operation	Actual operation	R15.2 or later
	delete	Delete	
	rename	Rename	
	modify	Change comment, edit startup conditions, relate JNW	
	on trigger	Enable trigger	
	off trigger	Disable trigger	
TARGET_TEXTLOG	create	Create	
	delete	Delete	
	rename	Rename	
	modify	Edit target text log	
PLAN	create	Create	
	delete	Delete	
	copy	Create from master definition, copy	
	modify	Upload, save (release plan), change time, modify comment	
	submit	Release immediately	
	on plan	Enable	
	off plan	Disable	
CAL	create	Create	
	delete	Delete	
	rename	Rename	
	modify	Edit rule	
TRK	skip	Skip	
	noskip	Cancel skip	
	hold	Hold	
	release	Cancel hold	
	suspend	Suspend	
	resume	Cancel suspension	
	estop	Forcibly stop	
	forcestart	Forcibly start	
	rerun	Retry	
	restart	Restart	
	freecontrol	Release control	
	start_immediate	Execute (immediately)	
	start_asap	Execute (ASAP)	
	ok	Accept dialog component	
	error	Reject dialog component	
	modify	Modify wait time	
	statusdone	Modify the component status from terminated with error or warning to normally terminated	

Differences from Previous Versions

TargetType	Operation	Actual operation	R15.2 or later
	archive	Manually archive tracker	
UCONF	modify	Modify the user environment setting	
	defmodify	Modify the default parameter	
SCONF	modify	Modify the system environment setting	
	addmac	Add to the machine group	
	deletemac	Delete from the machine group	
MCONF	modify	Change the permission setting	
CMD		* Output additional information (such as a sub-command name or parameter)	
JPF	upload	Upload a JPF file	
	download	Download a JPF file	
	trkget	Download tracker information	
CUSTOM	create	Create	
	delete	Delete	
	rename	Rename	
	copy	Copy	
	assign	Move, cut	
	modify	Modify script, modify parameter, modify comment	
CUSTOMGRP	create	Create	
	delete	Forcibly delete	
	rename	Rename	
	copy	Copy	
	move	Move, cut, normally delete	
	modify	Change comment	

6.2. Changes in R15.1

In R15.1, more operation types are output to the operation log compared with earlier versions. Operation logs output in R15.1 or later are listed in [Table 6.2, “All Operation Log Types in R15.1”](#).

Table 6.2. All Operation Log Types in R15.1

TargetType	Operation	Actual operation	R15.1 or later
USER	login	Log in	
	logout	Log out	
GRP	create	Create	
	delete	Forcibly delete	
	rename	Rename	
	copy	Copy	
	move	Move, normally delete	
	modify	Modify comment	
JNW	create	Create	
	delete	Delete	
	submit	Immediately submit	
	rename	Rename	
	copy	Copy	
	assign	Move under root	✓
	move	Move	✓
	modify	Save flow, change parameter	
SCT	create	Create	
	delete	Delete	
	move	Move	
SCH	create	Create	
	delete	Delete	
	rename	Rename	
	modify	Edit rule, relate JNW	
SCHCTRL	create	Create	
	regist	Register schedule with group	
	rename	Rename	
	delete	Delete	
	on sched	Enable schedule	
	on group	Enable schedule group	
	off sched	Disable schedule	
	off group	Disable schedule group	
	move sched	Move schedule	
	move group	Move schedule group	
	comment set	Add comment	
TRG	create	Create	✓

Differences from Previous Versions

TargetType	Operation	Actual operation	R15.1 or later
	delete	Delete	✓
	rename	Rename	✓
	modify	Modify comment, edit startup conditions, relate JNW	✓
	on trigger	Enable trigger	✓
	off trigger	Disable trigger	✓
TARGET_TEXTLOG	create	Create	✓
	delete	Delete	✓
	rename	Rename	✓
	modify	Edit target text log	✓
PLAN	create	Create	✓
	delete	Delete	✓
	copy	Create from master definition, copy	✓
	modify	Upload, save (release plan), modify time, modify comment	✓
	submit	Release immediately	✓
	on plan	Enable	✓
	off plan	Disable	✓
CAL	create	Create	
	delete	Delete	
	rename	Rename	
	modify	Edit rule	
TRK	skip	Skip	
	noskip	Cancel skip	
	hold	Hold	
	release	Cancel hold	
	suspend	Suspend	
	resume	Cancel suspension	
	estop	Forcibly stop	
	forcestart	Forcibly start	
	rerun	Retry	
	restart	Restart	
	freecontrol	Release control	
	start_immediate	Execute (immediate)	
	start_asap	Execute (ASAP)	
	ok	Accept dialog component	
	error	Reject dialog component	
	modify	Modify wait time	
	statusdone	Modify the component status from terminated with error or warning to normally terminated	

Differences from Previous Versions

TargetType	Operation	Actual operation	R15.1 or later
	archive	Manually archive tracker	
UCONF	modify	Modify the user environment setting	
	defmodify	Modify the default parameter	
SCONF	modify	Modify the system environment setting	
	addmac	Add to the machine group	
	deletemac	Delete from the machine group	
MCONF	modify	Change the permission setting	
CMD		* Output additional information (such as a subcommand name and parameter).	
JPF	upload	Upload a JPF file	
	download	Download a JPF file	
	trkget	Download tracker information	
CUSTOM	create	Create	
	delete	Delete	
	rename	Rename	
	copy	Copy	
	assign	Move, cut	✓
	modify	Modify script, modify parameter, modify comment	
CUSTOMGRP	create	Create	✓
	delete	Forcibly delete	✓
	rename	Rename	✓
	copy	Copy	✓
	move	Move, cut, normally delete	✓
	modify	Change comment	✓

6.3. Changes in R14.2

In R14.2, more operation types are output to the operation log compared with earlier versions. Operation logs output in R14.2 or later are listed in [Table 6.3, "All Operation Log Types in R14.2"](#).

Table 6.3. All Operation Log Types in R14.2

TargetType	Operation	Actual operation	R14.2 or later
USER	login	Log in	
	logout	Log out	
GRP	create	Create	
	delete	Forcibly delete	
	rename	Rename	
	copy	Copy	
	move	Move, normally delete	
JNW	create	Create	
	delete	Delete	
	submit	Immediately submit	
	rename	Rename	
	copy	Copy	
	modify	Save flow, change parameter	
SCT	create	Create	
	delete	Delete	
	move	Move	
SCH	create	Create	
	delete	Delete	
	rename	Rename	
	modify	Edit rule, relate JNW	
SCHCTRL	create	Create	
	regist	Register schedule with group	
	rename	Rename	
	delete	Delete	
	on sched	Enable schedule	
	on group	Enable schedule group	
	off sched	Disable schedule	
	off group	Disable schedule group	
	move sched	Move schedule	
	move group	Move schedule group	
	comment set	Add comment	
CAL	create	Create	
	delete	Delete	
	rename	Rename	
	modify	Edit rule	

Differences from Previous Versions

TargetType	Operation	Actual operation	R14.2 or later
TRK	skip	Skip	
	noskip	Cancel skip	
	hold	Hold	
	release	Cancel hold	
	suspend	Suspend	
	resume	Cancel suspension	
	estop	Forcibly stop	
	forcestart	Forcibly start	
	rerun	Retry	
	restart	Restart	
	freecontrol	Release control	
	start_immediate	Execute (immediately)	
	start_asap	Execute (ASAP)	
	ok	Accept dialog component	
	error	Reject dialog component	
	modify	Modify wait time	
statusdone	Change the component status from terminated with error or warning to normally terminated		
archive	Manually archive tracker		
UCONF	modify	Change the user environment setting	
	defmodify	Change the default parameter	
SCONF	modify	Change the system environment setting	
	addmac	Add to the machine group	
	deletemac	Delete from the machine group	
MCONF	modify	Change the permission setting	
CMD		* Output the additional information (such as a subcommand name and parameter).	
JPF	upload	Upload a JPF file	
	download	Download a JPF file	
	trkget	Download tracker information	✓

6.4. Changes in R13.1

In R13.1, the number of operation types that are output to the operation log is the same as that in R12.10.

Table 6.4. All Operation Log Types in R13.1

TargetType	Operation	Actual operat	R13.1 or later
USER	login	Log in	
	logout	Log out	
GRP	create	Create	
	delete	Forcibly delete	
	rename	Rename	
	copy	Copy	
	move	Move, normaly delete	
JNW	create	Create	
	delete	Delete	
	submit	Immediately submit	
	rename	Rename	
	copy	Copy	
	modify	Save flow, change parameter	
SCT	create	Create	
	delete	Delete	
	move	Move	
SCH	create	Create	
	delete	Delete	
	rename	Rename	
	modify	Edit rule, relate JNW	
SCHCTRL	create	Create	
	regist	Register schedule with group	
	rename	Rename	
	delete	Delete	
	on sched	Enable schedule	
	on group	Enable schedule group	
	off sched	Disable schedule	
	off group	Disable schedule group	
	move sched	Move schedule	
	move group	Move schedule group	
	comment set	Comment	
CAL	create	Create	
	delete	Delete	
	rename	Rename	
	modify	Edit rule	

Differences from Previous Versions

TargetType	Operation	Actual operat	R13.1 or later
TRK	skip	Skip	
	noskip	Cancel skip	
	hold	Hold	
	release	Cancel hold	
	suspend	Suspend	
	resume	Cancel suspension	
	estop	Forcibly stop	
	forcestart	Forcibly start	
	rerun	Rerun	
	restart	Restart	
	freecontrol	Release control	
	start_immediate	Execute (immediately)	
	start_asap	Execute (ASAP)	
	ok	Accept dialog component	
	error	Reject dialog component	
	modify	Modify wait time	
	statusdone	Change the component status from terminated with error or warning to normally terminated	
archive	Manually archive tracker		
UCONF	modify	Change the user environment setting	
	defmodify	Change the default parameter	
SCONF	modify	Change the system environment setting	
	addmac	Add to machine group	
	deletemac	Delete from the machine group	
MCONF	modify	Change the permission setting	
CMD		* Output the additional information (such as a subcommand name and parameter).	
JPF	upload	Upload JPF	
	download	Download JPF	

6.5. Changes in R12.10

In R12.10, more operation types are output to the operation log compared with earlier versions. Operation logs output in R12.10 or later are listed in [Table 6.5, “All Operation Log Types in R12.10”](#).

Table 6.5. All Operation Log Types in R12.10

TargetType	Operation	Actual operat	R12.10 or later
USER	login	Log in	
	logout	Log out	
GRP	create	Create	
	delete	Forcibly delete	
	rename	Rename	
	copy	Copy	
	move	Move, normaly delete	
JNW	create	Create	
	delete	Delete	
	submit	Immediately submit	
	rename	Rename	
	copy	Copy	
	modify	Save flow, change parameter	
SCT	create	Create	
	delete	Delete	
	move	Move	
SCH	create	Create	
	delete	Delete	
	rename	Rename	
	modify	Edit rule, relate JNW	
SCHCTRL	create	Create	
	regist	Register schedule with group	
	rename	Rename	
	delete	Delete	
	on sched	Enable schedule	
	on group	Enable schedule group	
	off sched	Disable schedule	
	off group	Disable schedule group	
	move sched	Move schedule	
	move group	Move schedule group	
	comment set	Comment	
CAL	create	Create	
	delete	Delete	
	rename	Rename	
	modify	Edit rule	

Differences from Previous Versions

TargetType	Operation	Actual operat	R12.10 or later
TRK	skip	Skip	
	noskip	Cancel skip	
	hold	Hold	
	release	Cancel hold	
	suspend	Suspend	
	resume	Cancel suspension	
	estop	Forcibly stop	
	forcestart	Forcibly start	
	rerun	Rerun	
	restart	Restart	
	freecontrol	Release control	
	start_immediate	Execute (immediately)	
	start_asap	Execute (ASAP)	
	ok	Accept dialog component	
	error	Reject dialog component	
	modify	Modify wait time	
	statusdone	Change the component status from terminated with error or warning to normally terminated	
archive	Manually archive tracker		
UCONF	modify	Change the user environment setting	
	defmodify	Change the default parameter	
SCONF	modify	Change the system environment setting	
	addmac	Add to machine group	
	deletemac	Delete from the machine group	
MCONF	modify	Change the permission setting	
CMD		* Output the additional information (such as a subcommand name and parameter).	✓
JPF	upload	Upload JPF	✓
	download	Download JPF	✓

6.6. Changes in R12.9

In R12.9, more operation types are output to the operation log compared with earlier versions. Operation logs output in R12.9 or later are listed in [Table 6.6, “All Operation Log Types in R12.9”](#).

Table 6.6. All Operation Log Types in R12.9

TargetType	Operation	Actual operat	R12.9 or later
USER	login	Log in	
	logout	Log out	
GRP	create	Create	
	delete	Forcibly delete	
	rename	Rename	
	copy	Copy	
	move	Move, normaly delete	
JNW	create	Create	
	delete	Delete	
	submit	Immediately submit	
	rename	Rename	
	copy	Copy	
	modify	Save flow, change parameter	
SCT	create	Create	
	delete	Delete	
	move	Move	
SCH	create	Create	
	delete	Delete	
	rename	Rename	✓
	modify	Edit rule, relate JNW	
SCHCTRL	create	Create	✓
	regist	Register schedule with group	✓
	rename	Rename	✓
	delete	Delete	✓
	on sched	Enable schedule	✓
	on group	Enable schedule group	✓
	off sched	Disable schedule	✓
	off group	Disable schedule group	✓
	move sched	Move schedule	✓
	move group	Move schedule group	✓
	comment set	Comment	✓
CAL	create	Create	
	delete	Delete	
	rename	Rename	✓
	modify	Edit rule	

Differences from Previous Versions

TargetType	Operation	Actual operat	R12.9 or later
TRK	skip	Skip	
	noskip	Cancel skip	
	hold	Hold	
	release	Cancel hold	
	suspend	Suspend	
	resume	Cancel suspension	
	estop	Forcibly stop	
	forcestart	Forcibly start	
	rerun	Rerun	
	restart	Restart	
	freecontrol	Release control	
	start_immediate	Execute (immediately)	
	start_asap	Execute (ASAP)	
	ok	Accept dialog component	
	error	Reject dialog component	
	modify	Modify wait time	
	statusdone	Change the component status from terminated with error or warning to normally terminated	✓
archive	Manually archive tracker	✓	
UCONF	modify	Change the user environment setting	
	defmodify	Change the default parameter	
SCONF	modify	Change the system environment setting	
	addmac	Add to machine group	
	deletemac	Delete from the machine group	
MCONF	modify	Change the permission setting	

6.7. Changes in R12.8

In R12.8, more operation types are output to the operation log compared with earlier versions. Operation logs output in R12.8 or later are listed in [Table 6.7, “All Operation Log Types in R12.8”](#).

Table 6.7. All Operation Log Types in R12.8

TargetType	Operation	Actual operat	R12.8 or later
USER	login	Log in	✓
	logout	Log out	✓
GRP	create	Create	✓
	delete	Forcibly delete	✓
	rename	Rename	✓
	copy	Copy	✓
	move	Move, normaly delete	✓
JNW	create	Create	
	delete	Delete	
	submit	Immediately submit	
	rename	Rename	✓
	copy	Copy	✓
	modify	Save flow, change parameter	
SCT	create	Create	✓
	delete	Delete	✓
	move	Move	✓
SCH	create	Create	
	delete	Delete	
	modify	Edit rule, relate JNW	
CAL	create	Create	
	delete	Delete	
	modify	Edit rule	
TRK	skip	Skip	
	noskip	Cancel skip	
	hold	Hold	
	release	Cancel hold	
	suspend	Suspend	
	resume	Cancel suspension	
	estop	Forcibly stop	
	forcestart	Forcibly start	
	rerun	Rerun	
	restart	Restart	
	freecontrol	Release control	
	start_immediate	Execute (immediately)	
	start_asap	Execute (ASAP)	

Differences from Previous Versions

TargetType	Operation	Actual operat	R12.8 or later
	ok	Accept dialog component	
	error	Reject dialog component	
	modify	Modify wait time	
UCONF	modify	Change the user environment setting	
	defmodify	Change the default parameter	✓
SCONF	modify	Change the system environment setting	
	addmac	Add to machine group	✓
	deletemac	Delete from the machine group	✓
MCONF	modify	Change the permission setting	✓

6.8. Changes in R12.6

6.8.1. Differences Related to the TargetName Field

When you use a component in the job network or tracker flow in R12.5.x-based JobCenter as of R12.5.4 or later, only the job network name to which the component belongs is output to the TargetName field in the operation log.

In R12.6 or later, the tracker ID of the component name or job network is added to the character string in the TargetName field depending on the type of component operated.

Differences between operations are listed in [Table 6.8, "Relationship Between the Operation and the TargetName Field"](#).

Table 6.8. Relationship Between the Operation and the TargetName Field

Operation	Before R12.6	R12.6 or later
Operate the JNW tracker	JNW name	JNW name.YYYYMMDDhhmmss
Modify a component in the flow (unit job, R/3 job, BW job, dialog, event transmission, event reception)	JNW name	JNW name/component name
Modify a component in the flow (continuity, job waiting, sub JNW waiting, time waiting, file waiting)		JNW name
Operate a component in the tracker flow		JNW name.YYYYMMDDhhmmss/ component name
Components other than waiting and continuity		JNW name.YYYYMMDDhhmmss
Waiting component		JNW name.YYYYMMDDhhmmss
Continuity component		JNW name.YYYYMMDDhhmmss

6.8.2. Differences Related to the Operation Field

When a component in the tracker is operated in R12.5.x-based JobCenter as of R12.5.4 or later, "modify" is always output to the Operation field in the operation log.

In R12.6 or later, the character string according to the operation executed for the component is output instead of this. The operation targets and the character strings output to the Operation field are listed in [Table 6.9, "Relationship Between Operation and the Operation Field"](#).

Operations that can be executed for each component are listed in [Table 6.10, "List of Operations That Can Be Executed for Each Part \(1\)"](#) and [Table 6.11, "List of Operations That Can Be Executed for Each Part \(2\)"](#).

Table 6.9. Relationship Between Operation and the Operation Field

Operation	Before R12.6	R12.6 or later
Operate the component tracker	Skip	modify
	Cancel skip	skip
	Hold	noskip
	Cancel hold	hold
	Suspend	release
	Cancel suspension	suspend
		resume

	Forcibly stop		estop
	Forcibly start		forcestart
	Rerun		rerun
	Restart		restart
	Release control		freecontrol
	Execute (immediately)		start_immediate
	Execute (ASAP)		start_asap
	ok		ok
	error		error
	Modify wait time		modify

Table 6.10. List of Operations That Can Be Executed for Each Part (1)

Operation	Unit Job	R/3 job	BW job	Sub JNW	Dialog	Event Transmission	Event Reception
Skip	✓	✓	✓	✓	✓	✓	✓
Cancel skip	✓	✓	✓	✓	✓	✓	✓
Hold	✓	✓	✓	✓	-	✓	✓
Cancel hold	✓	✓	✓	✓	-	✓	✓
Forcibly start	✓	✓	✓	✓	-	✓	✓
Rerun	✓	✓	✓	✓	✓	✓	✓
Forcibly stop	✓	-	✓	✓	-	✓	✓
Restart	✓	-	-	-	-	-	-
Release control	✓	-	-	-	-	-	-
Suspend	✓	-	-	-	-	-	-
Cancel suspension	✓	-	-	-	-	-	-
Execute (immediately)	-	✓	-	-	-	-	-
Execute (ASAP)	-	✓	-	-	-	-	-
ok	-	-	-	-	✓	-	-
error	-	-	-	-	✓	-	-
Modify wait time	-	-	-	-	-	-	-

Table 6.11. List of Operations That Can Be Executed for Each Part (2)

Operation	Event Transmission	Continuity	Job waiting	Sub JNW waiting	File waiting	Time waiting
Skip	✓	-	✓	✓	✓	✓
Cancel skip	✓	-	✓	✓	✓	✓
Hold	✓	✓	-	-	-	-

Differences from Previous Versions

Cancel hold	✓	✓	-	-	-	-
Forcibly start	✓	-	-	-	-	-
Rerun	✓	-	-	-	-	-
Forcibly stop	✓	-	-	-	-	-
Restart	-	-	-	-	-	-
Release control	-	-	-	-	-	-
Suspend	-	-	-	-	-	-
Cancel suspension	-	-	-	-	-	-
Execute (immediately)	-	-	-	-	-	-
Execute (ASAP)	-	-	-	-	-	-
ok	-	-	-	-	-	-
error	-	-	-	-	-	-
Modify wait time	-	-	-	-	-	✓

7 Correspondence between On-screen Operations and Operation Logs

This chapter shows the correspondence between operations that can be performed from JobCenter CL/Win and the data output to the operation log.

You can see the data output to the following three fields in the operation log for operations from CL/Win.

- TargetType
- TargetName
- Operation

7.1. User Frame

The user frame provides the following seven tabs for each function: [JNW List], [Tracker List], [Schedule List], [Trigger List], [User Menu], [Schedule Viewing], and [Release Plan List]. Of these tabs, the operation log is output for operations on the six tabs except for the [Schedule Viewing] tab.

7.1.1. [JNW List] Tab

The operation log is output when an operation is executed for a group, job network, or shortcut on the [JNW List] tab.

7.1.1.1. Operation for a Group

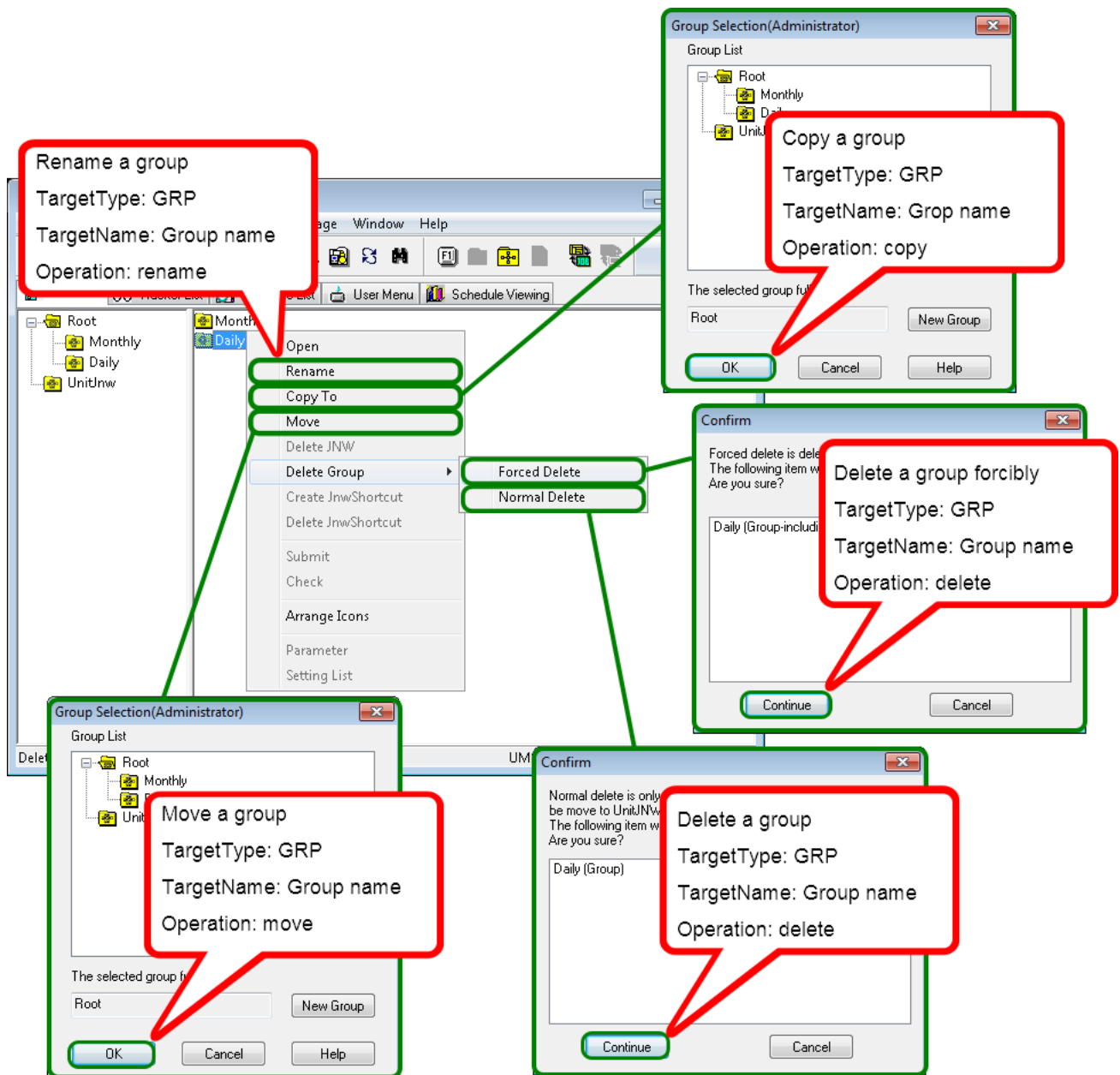


Figure 7.1. Operation for a Group

7.1.1.2. Operation for a Job Network

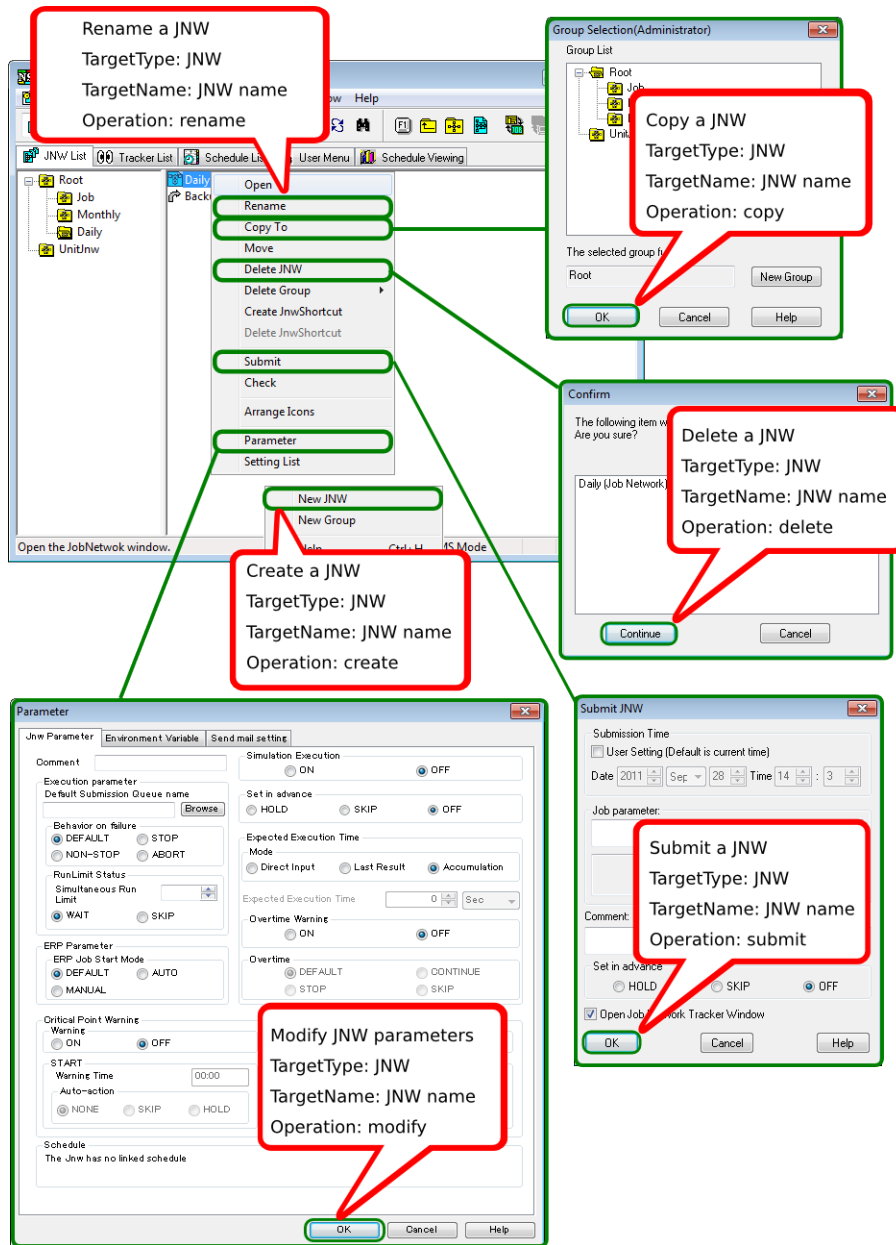


Figure 7.2. Operation for a Job Network in the User Frame

Correspondence between On-screen Operations and Operation Logs

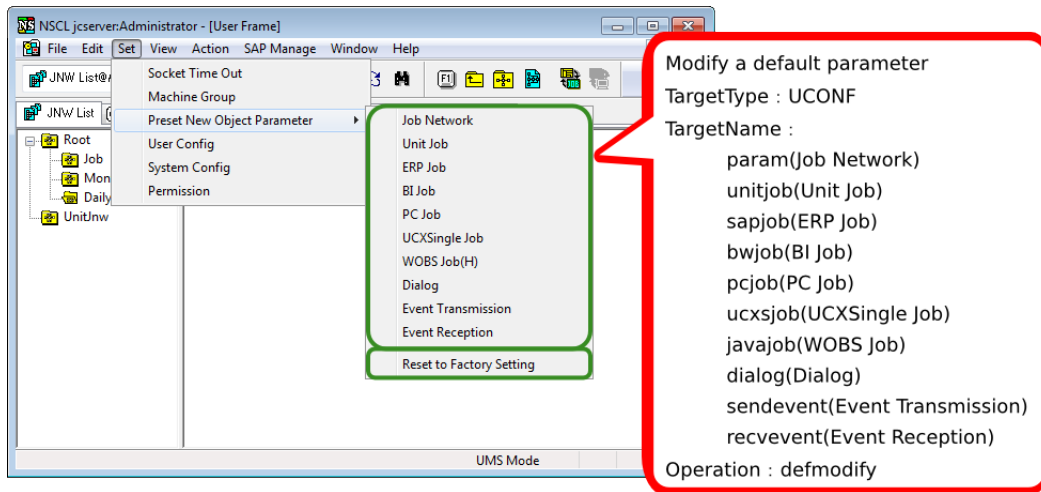


Figure 7.3. Operation for Default Parameter



If "Load default value" is selected, all default parameters are initialized. Therefore, the operation log records data in the same way as when the default parameters are changed for all types of TargetName.

7.1.1.3. Operation for a Shortcut

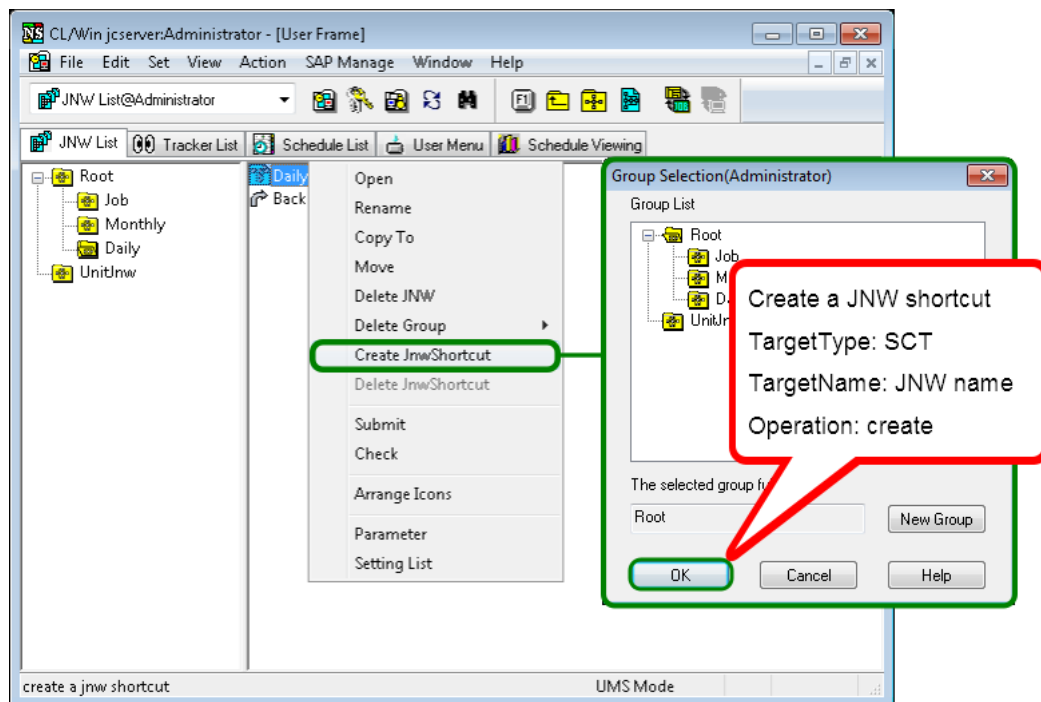


Figure 7.4. Operation for a Shortcut

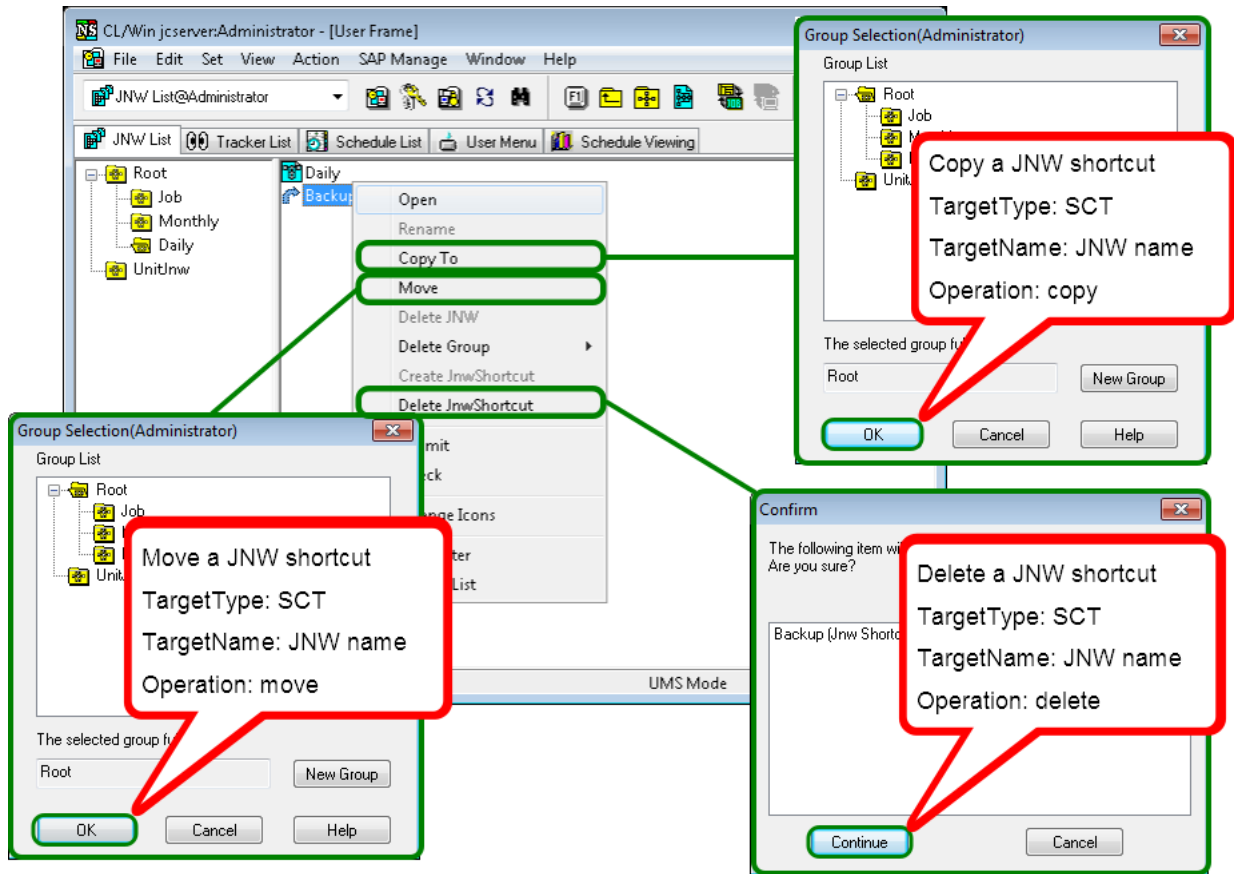



Figure 7.5. Operation for a Shortcut

 The processing for copying a shortcut to another group is the same as for creating a new shortcut to the same job network in that group. Therefore, "create" is output to the Operation field in the operation log.

7.1.2. [Tracker List] Tab

An operation log is output when an operation displayed by right-clicking the tracker or each component in the tracker flow is executed on the [Tracker List] tab.

7.1.2.1. Operation in the User Frame - Common to All Trackers

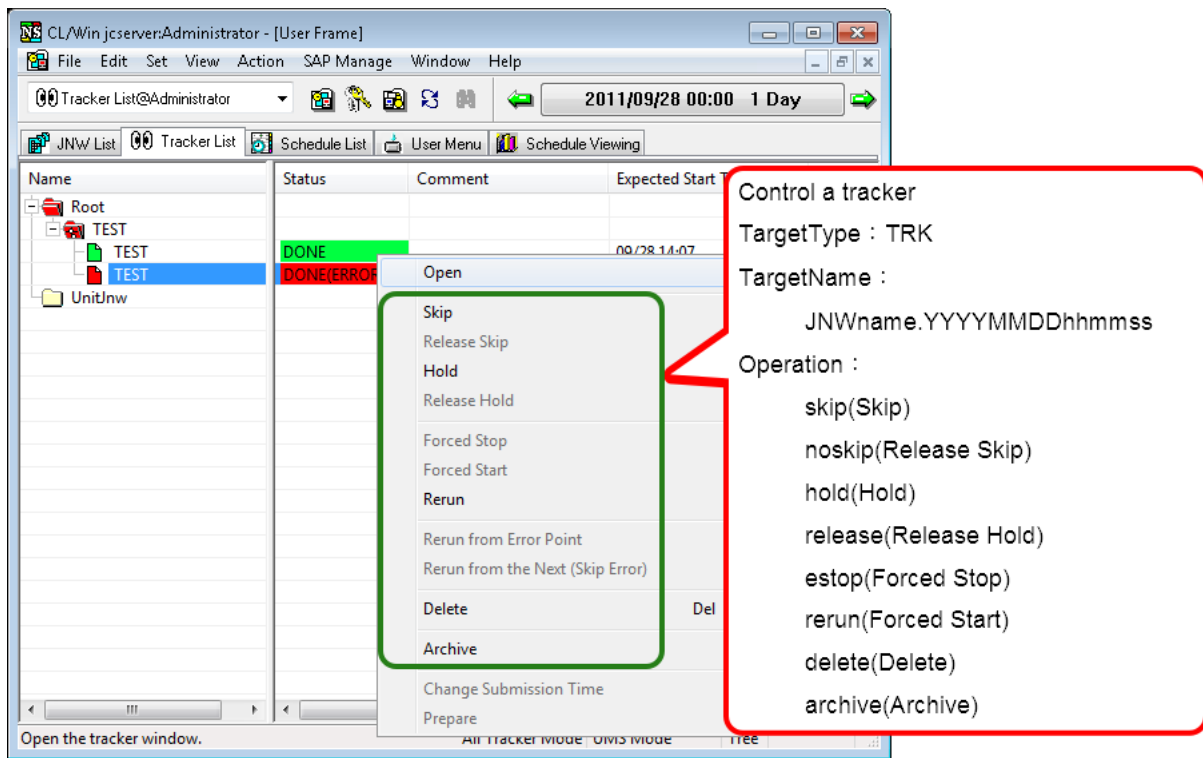


Figure 7.6. Operation for the Tracker (Common)

7.1.2.2. Operation in the User Frame - "Scheduled" Tracker

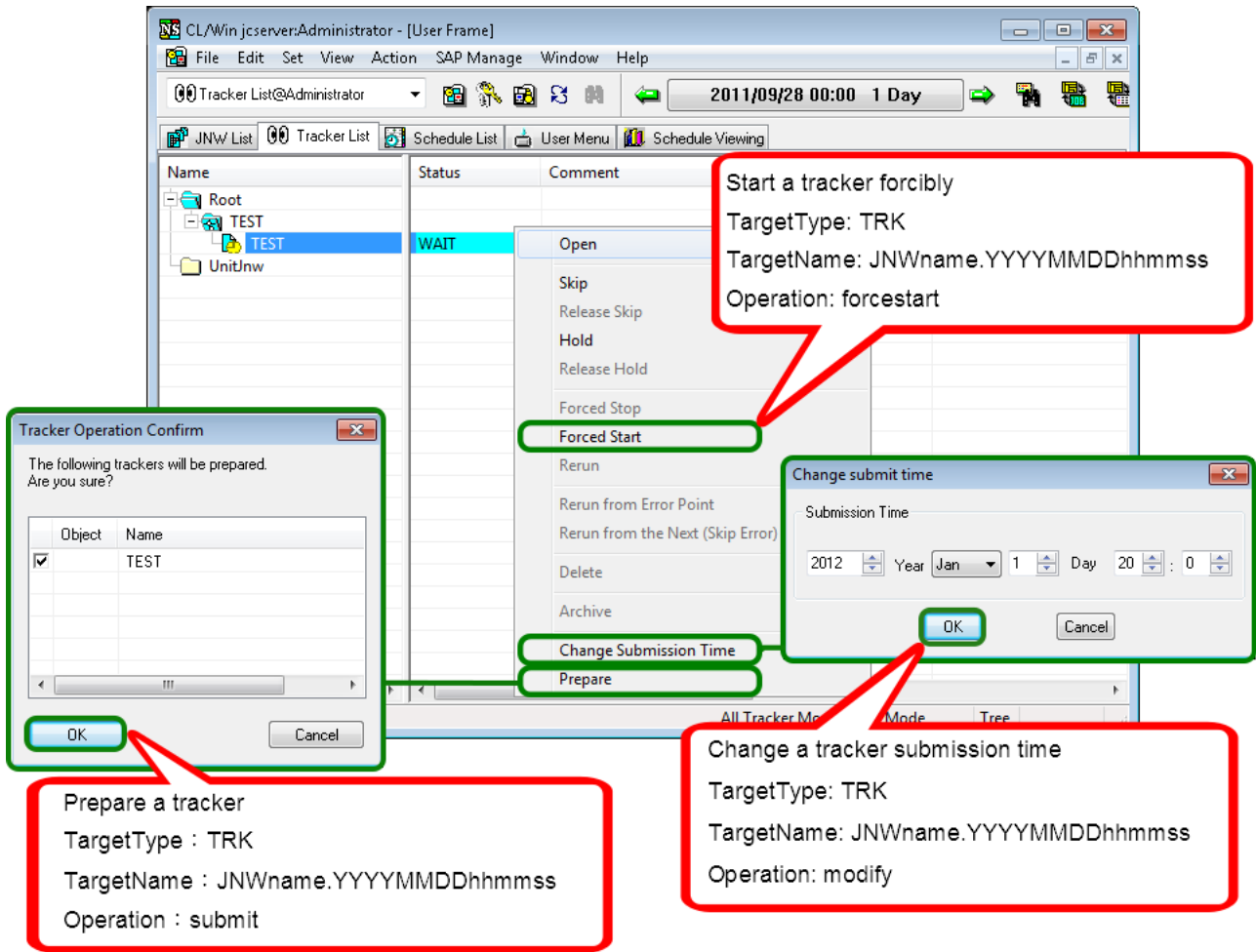


Figure 7.7. Operation for a Scheduled Tracker

7.1.2.3. Operation in the User Frame - "Scheduled (Confirmed)" Tracker

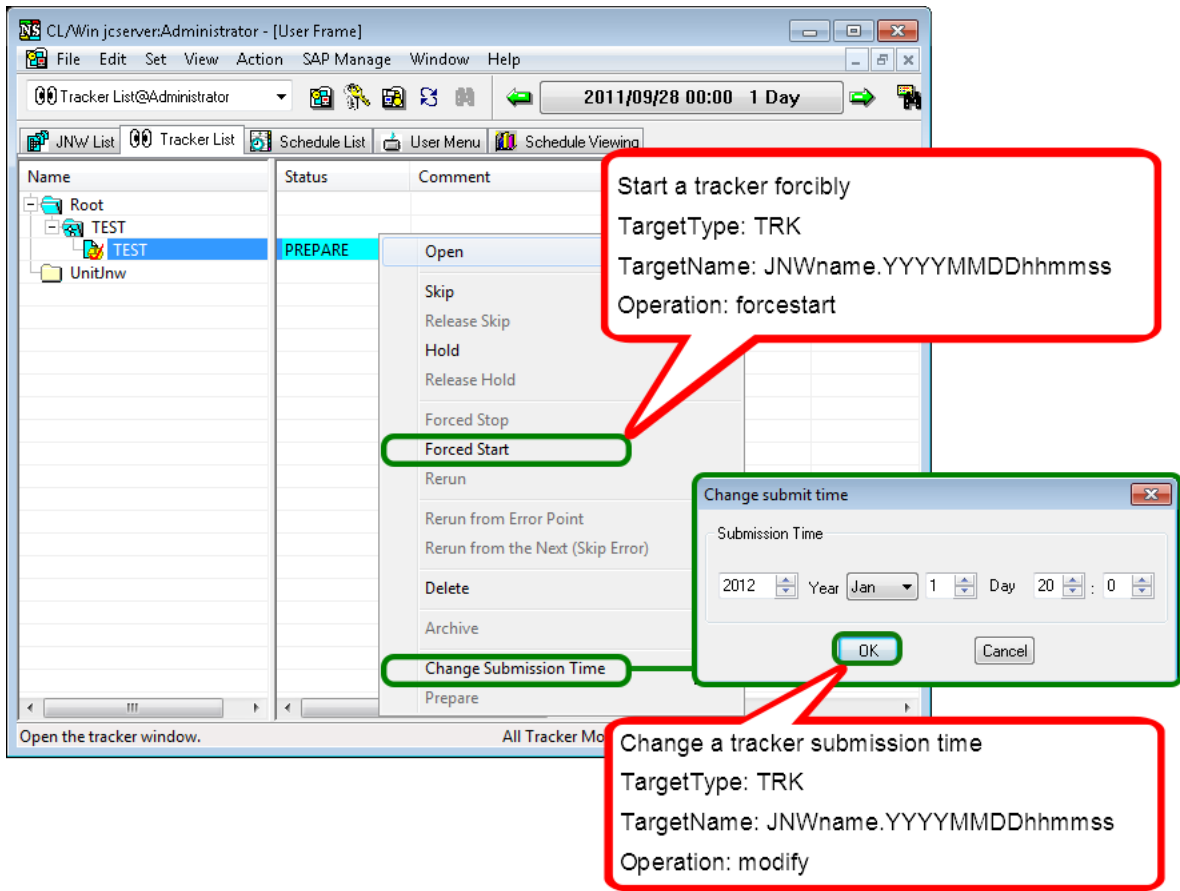


Figure 7.8. Operation for a Scheduled (Confirmed) Tracker

7.1.2.4. Modification of a Scheduled or Scheduled (Confirmed) Tracker

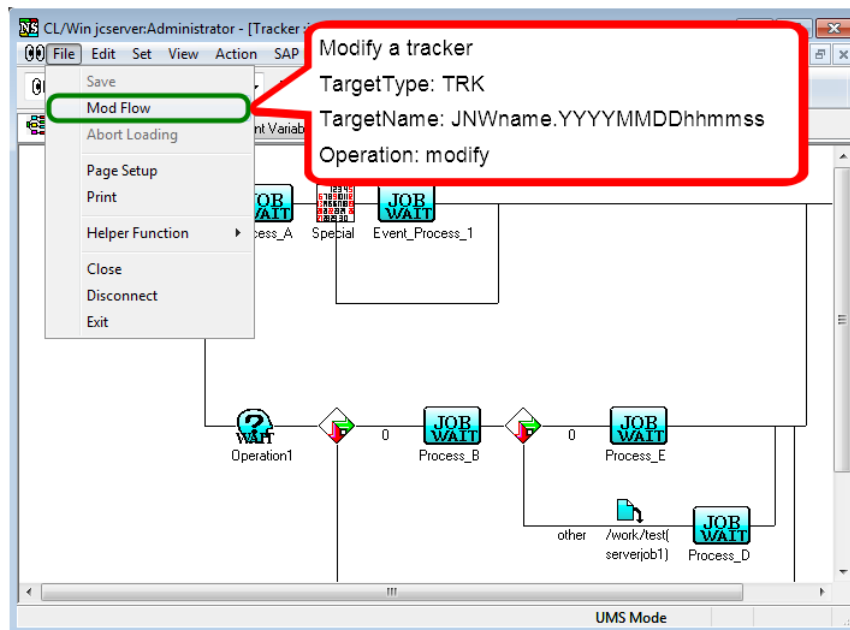


Figure 7.9. Modification of a Scheduled or Scheduled (Confirmed) Tracker Flow

7.1.2.5. Operation of a Component in the Tracker Flow

7.1.2.5.1. Unit Job

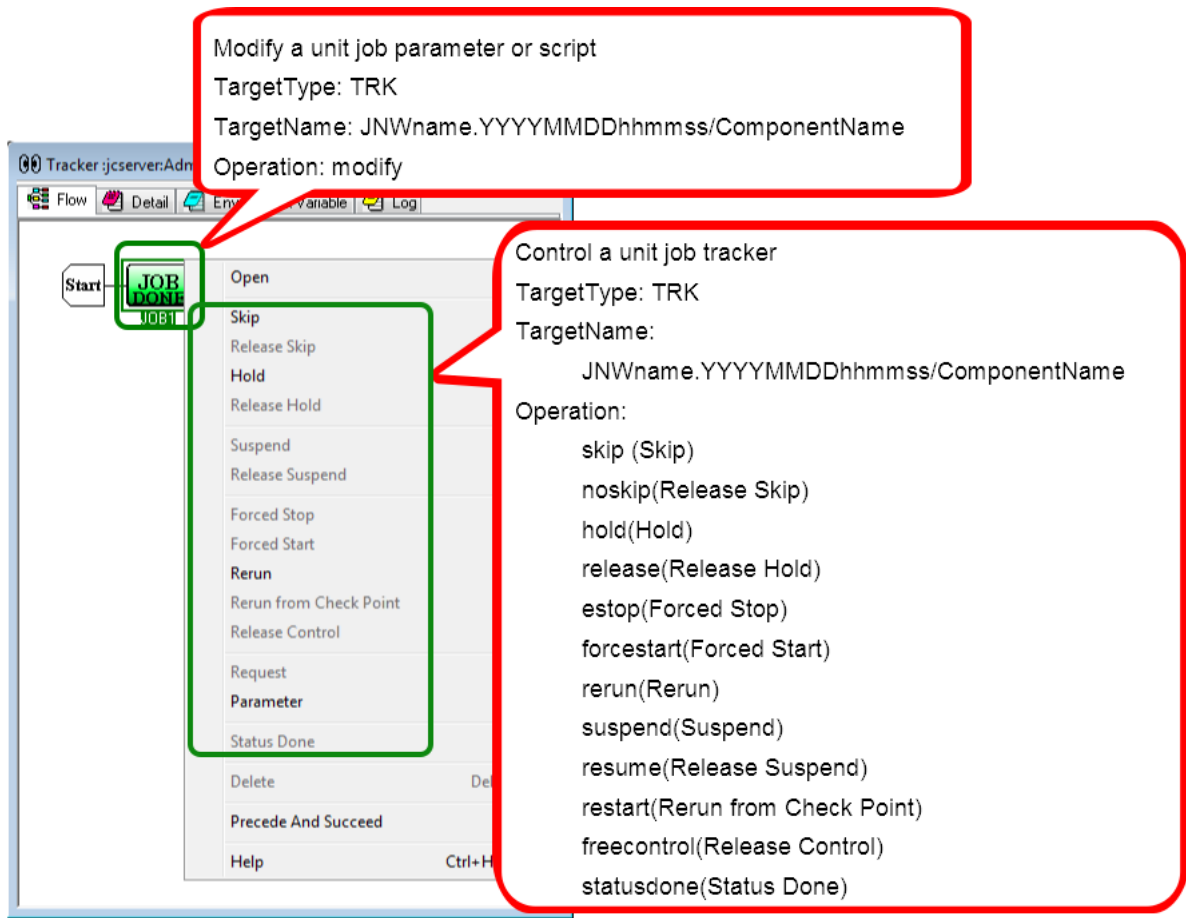


Figure 7.10. Operation for a Unit Job Tracker

7.1.2.5.2. ERP Job

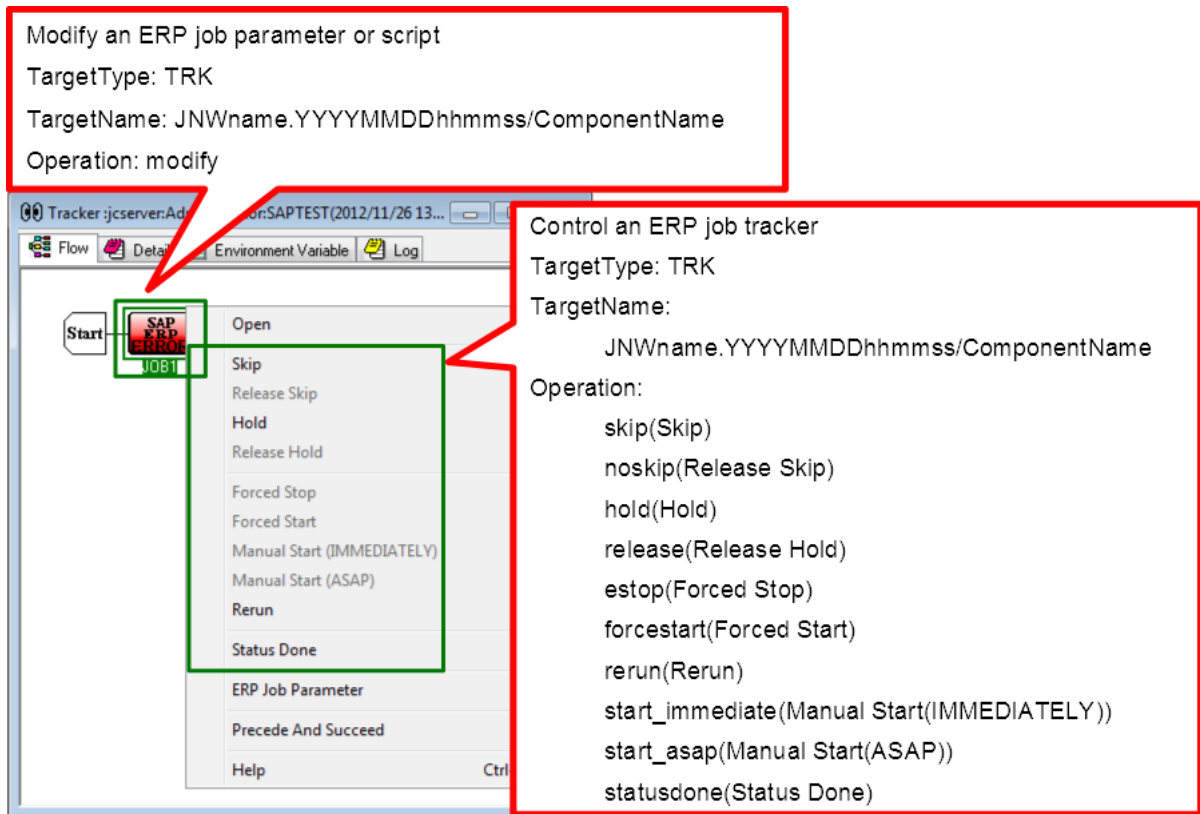


Figure 7.11. Operation for an ERP Job Tracker

7.1.2.5.3. BI Job

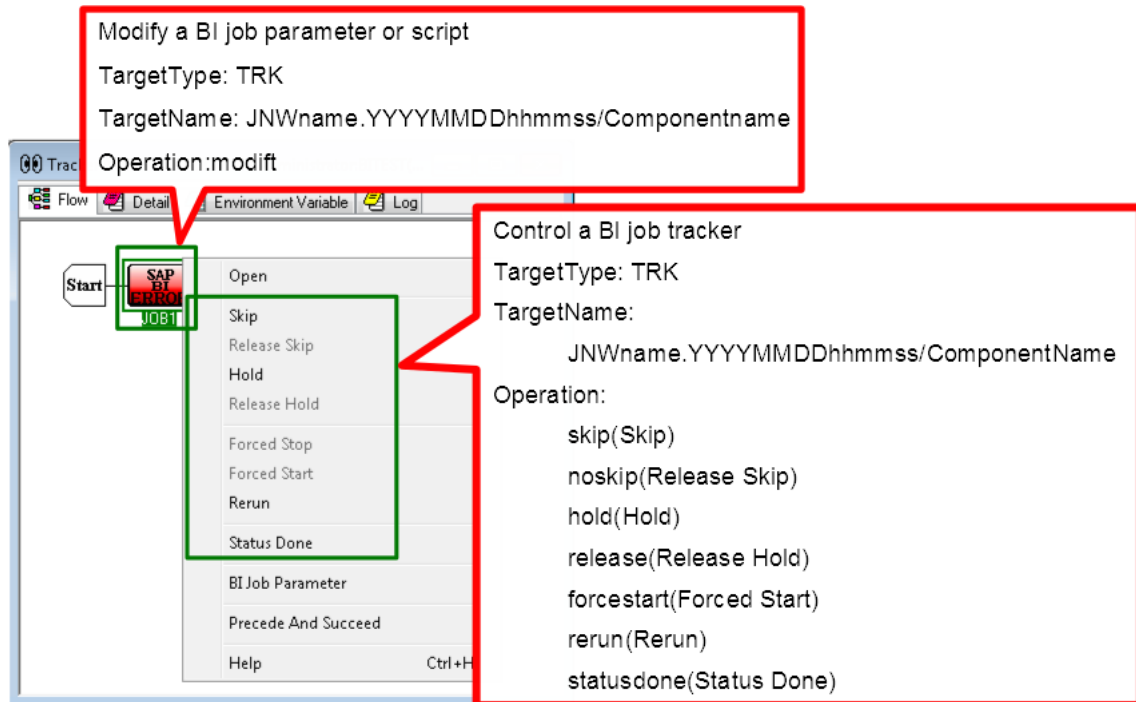


Figure 7.12. Operation for a BI Job Tracker

7.1.2.5.4. PC Job

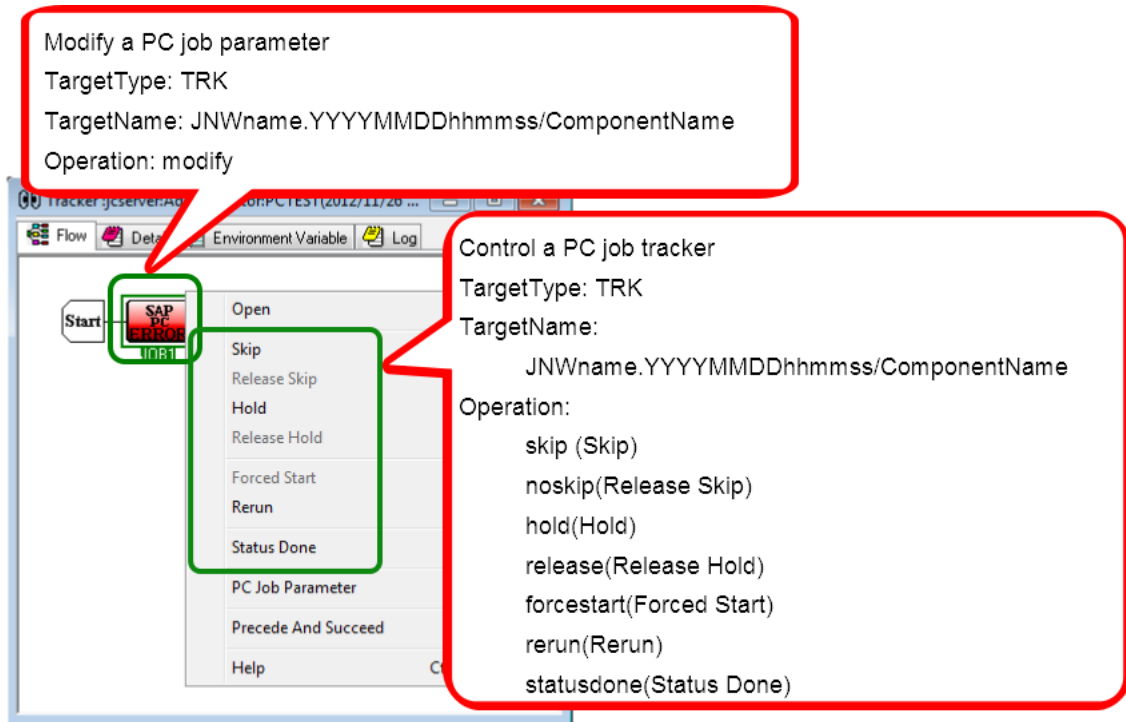


Figure 7.13. Operation for a PC Job Tracker

7.1.2.5.5. Dialog

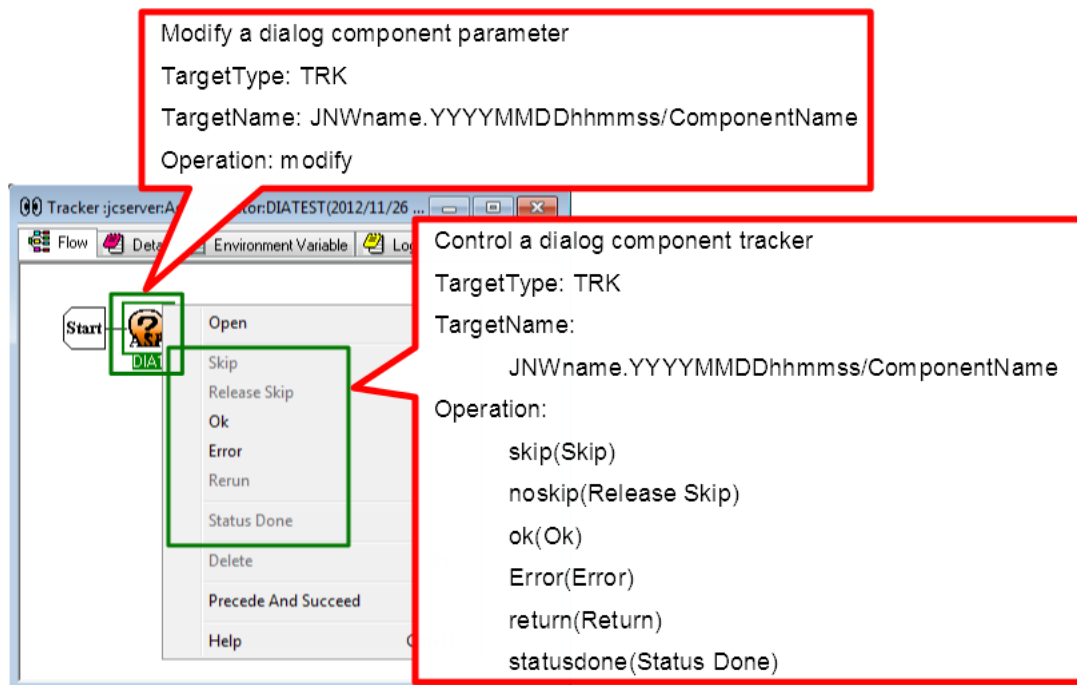


Figure 7.14. Operation for a Dialog Component Tracker

7.1.2.5.6. Continuity

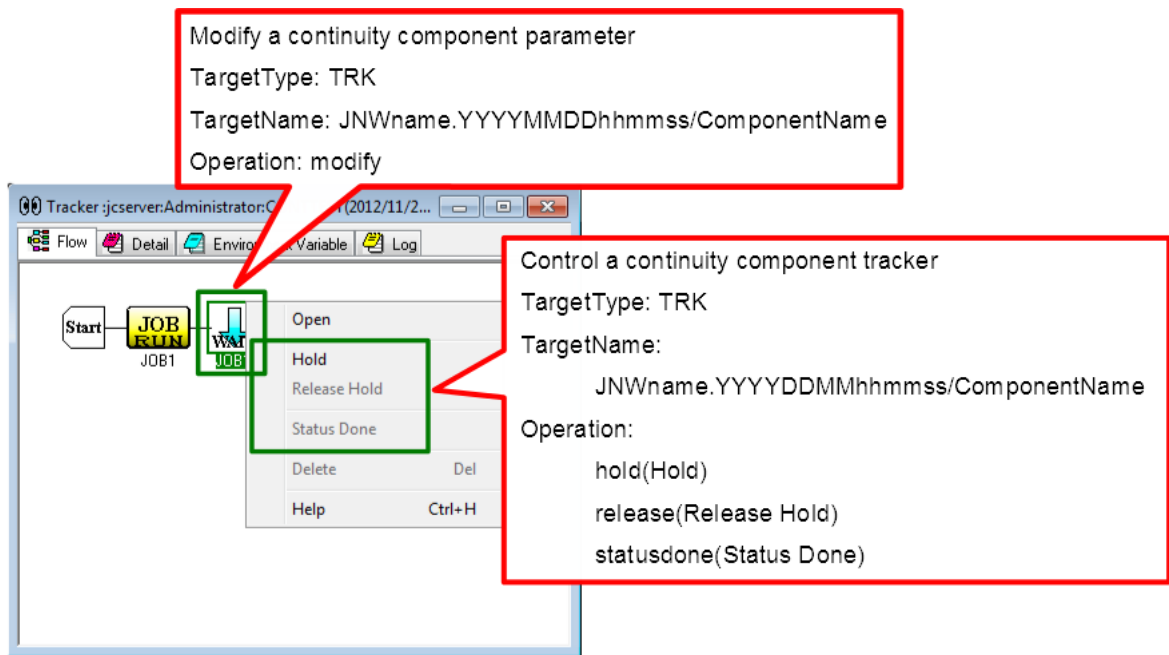


Figure 7.15. Operation for a Continuity Component Tracker

7.1.2.5.7. Sub Job Network

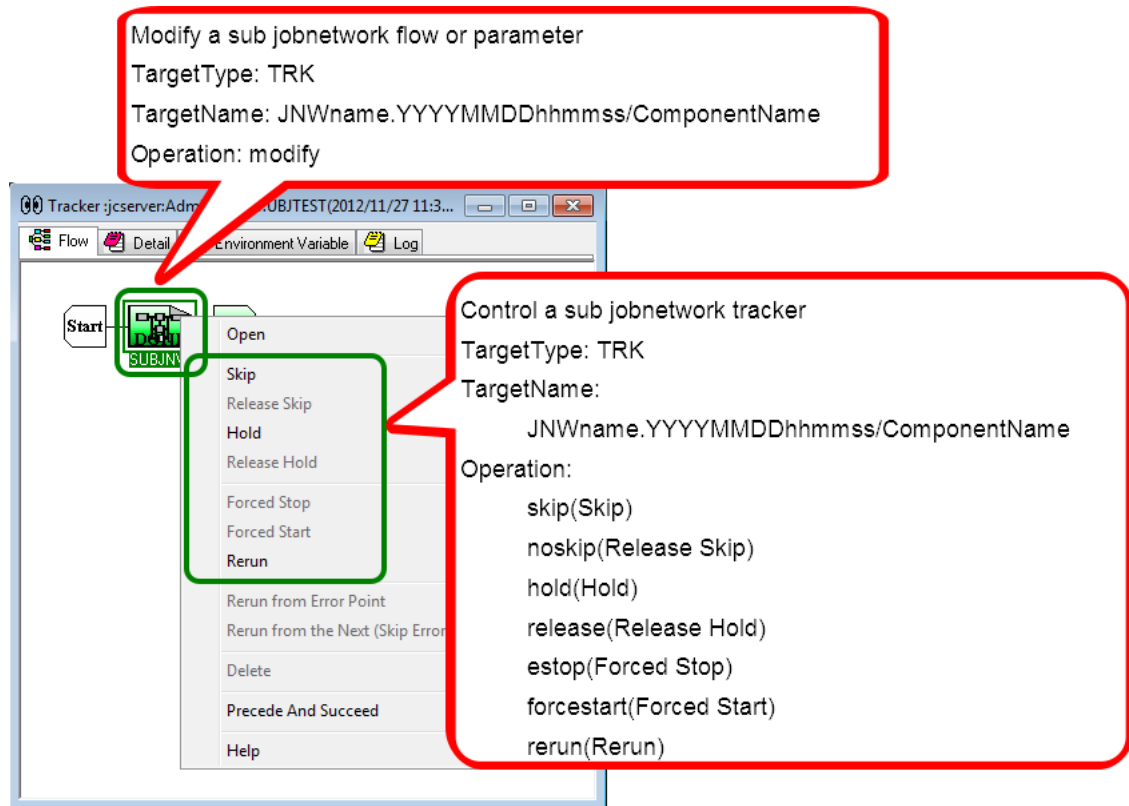


Figure 7.16. Operation for a Sub Job Network Tracker

7.1.2.5.8. Event Transmission

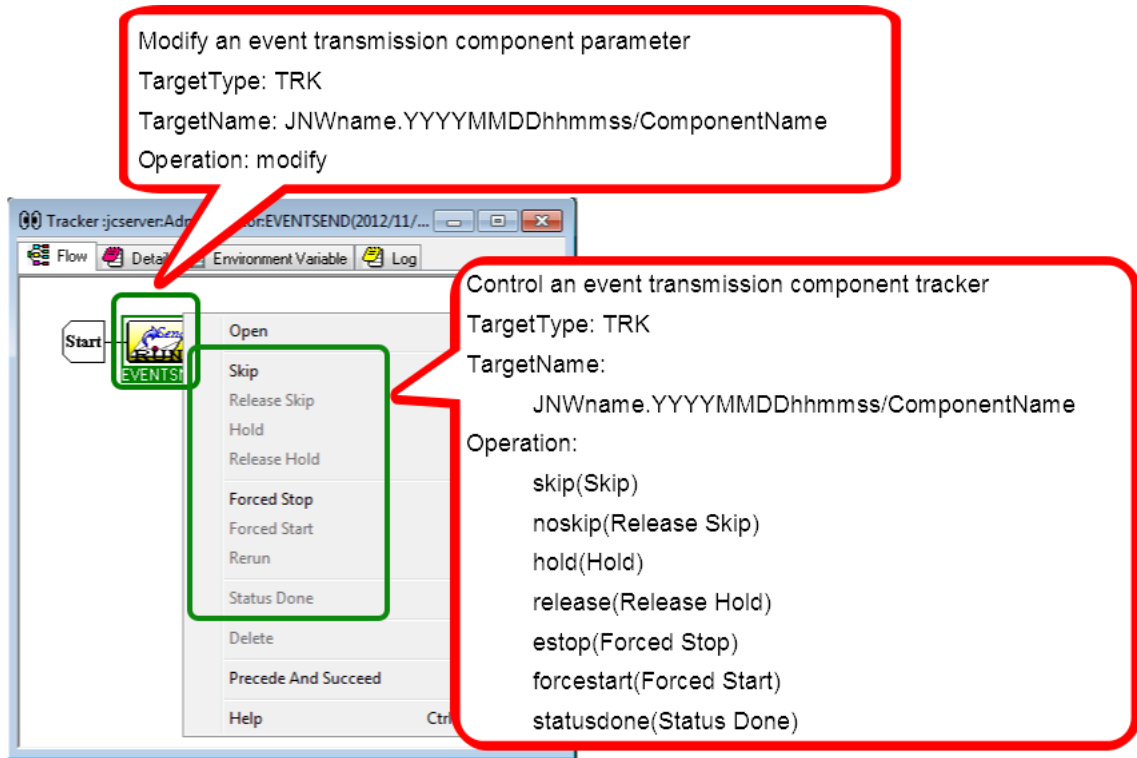


Figure 7.17. Operation for an Event Transmission Component Tracker

7.1.2.5.9. Event Reception

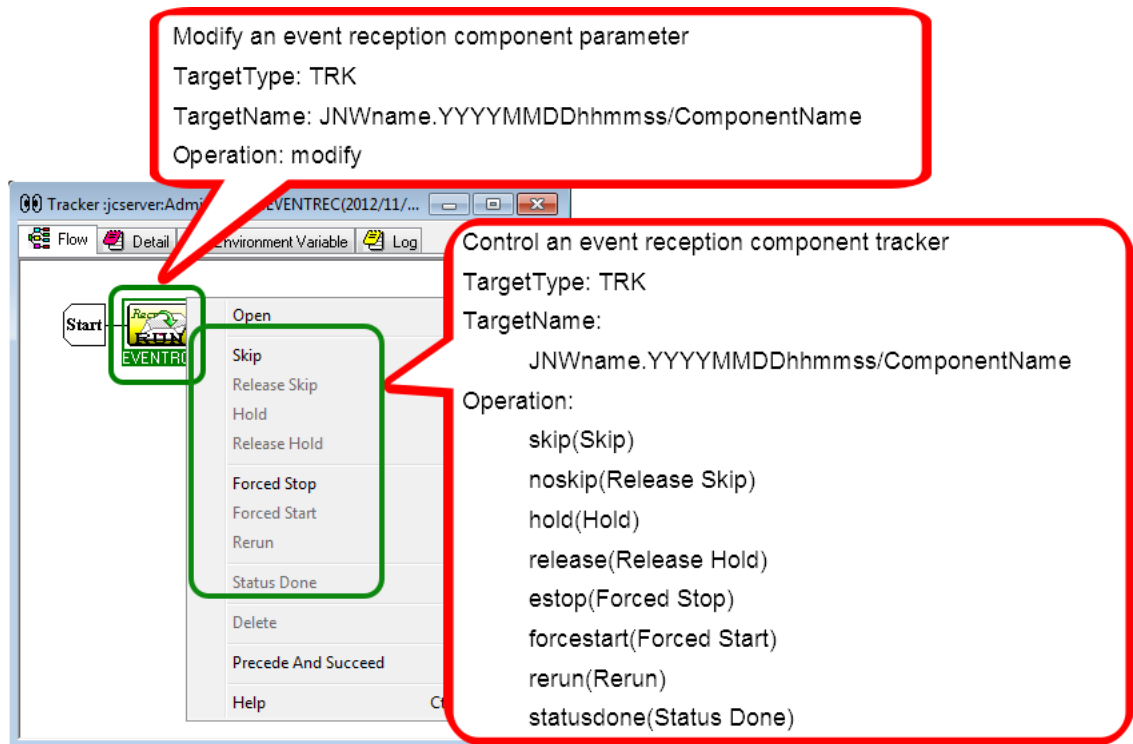


Figure 7.18. Operation for an Event Reception Component Tracker

7.1.2.5.10. Job Network Waiting

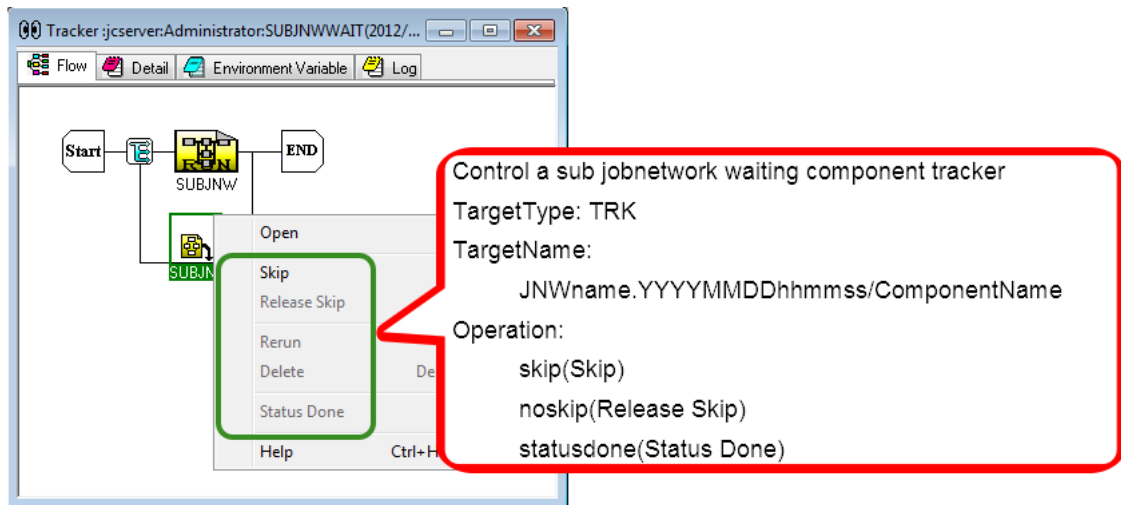


Figure 7.19. Operation for a Job Network Waiting Component Tracker

7.1.2.5.11. Job Waiting

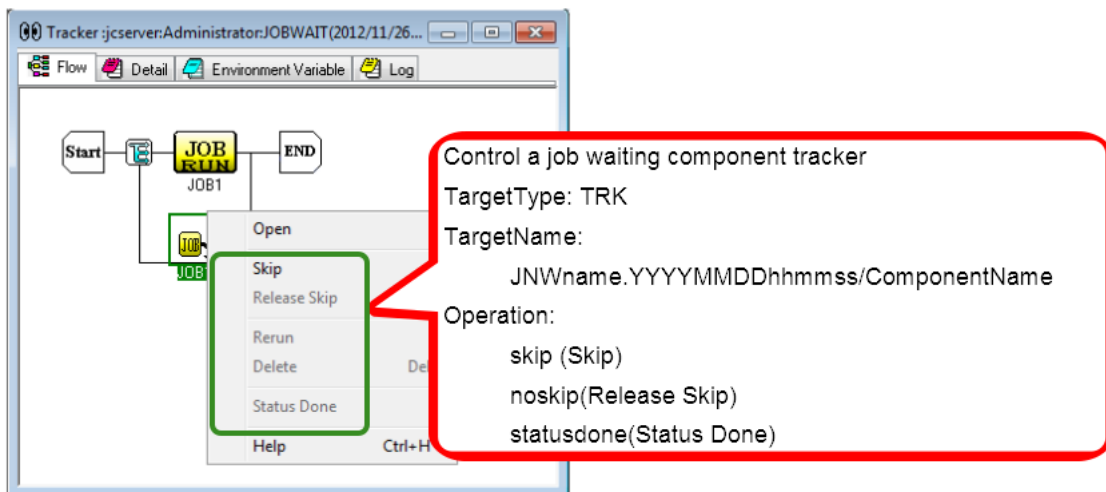


Figure 7.20. Operation for a Job Waiting Component Tracker

7.1.2.5.12. File Waiting

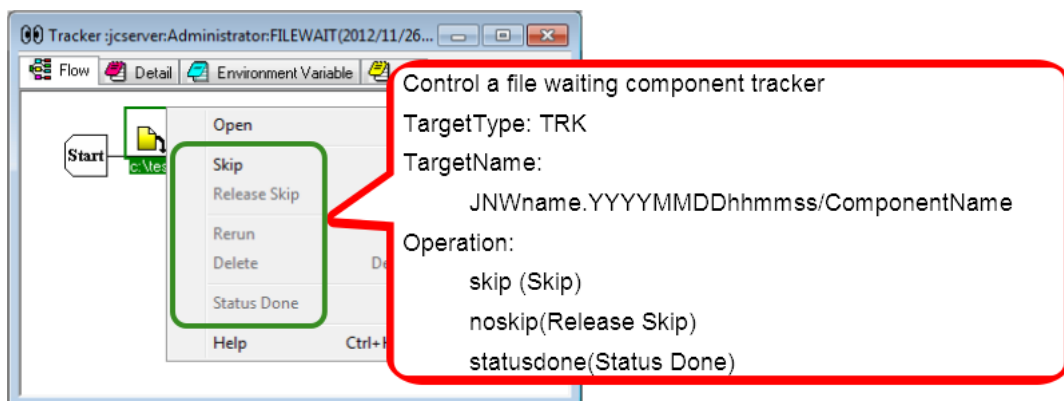


Figure 7.21. Operation for a File Waiting Component Tracker

7.1.2.5.13. Time Waiting

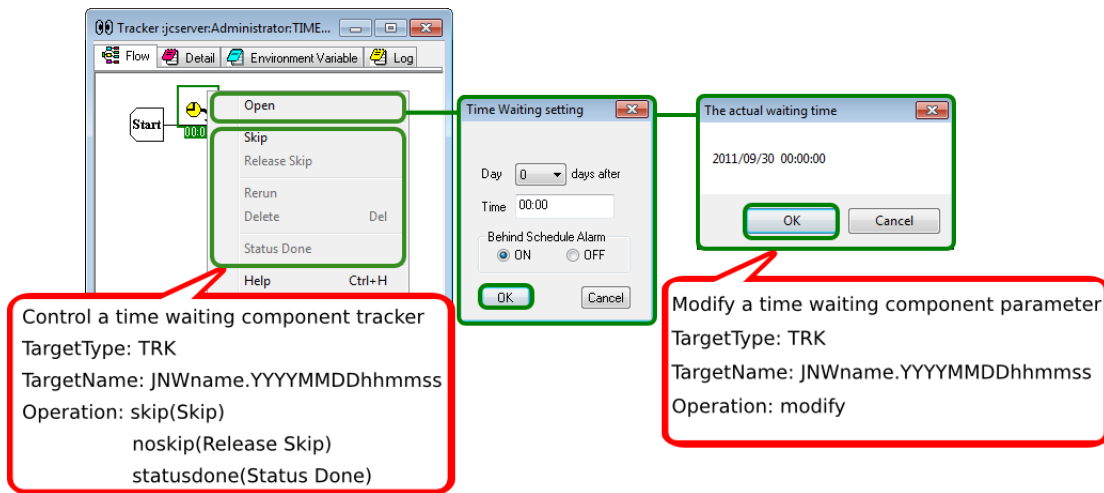


Figure 7.22. Operation for a Time Waiting Component Tracker

7.1.3. [Schedule List] Tab

Of the operations that can be executed on the [Schedule List] tab, an operation log is output for creating, deleting, enabling, and disabling schedule groups as well as creating, editing, deleting, and performing other operations on the schedule.

7.1.3.1. Operation for a Schedule Group

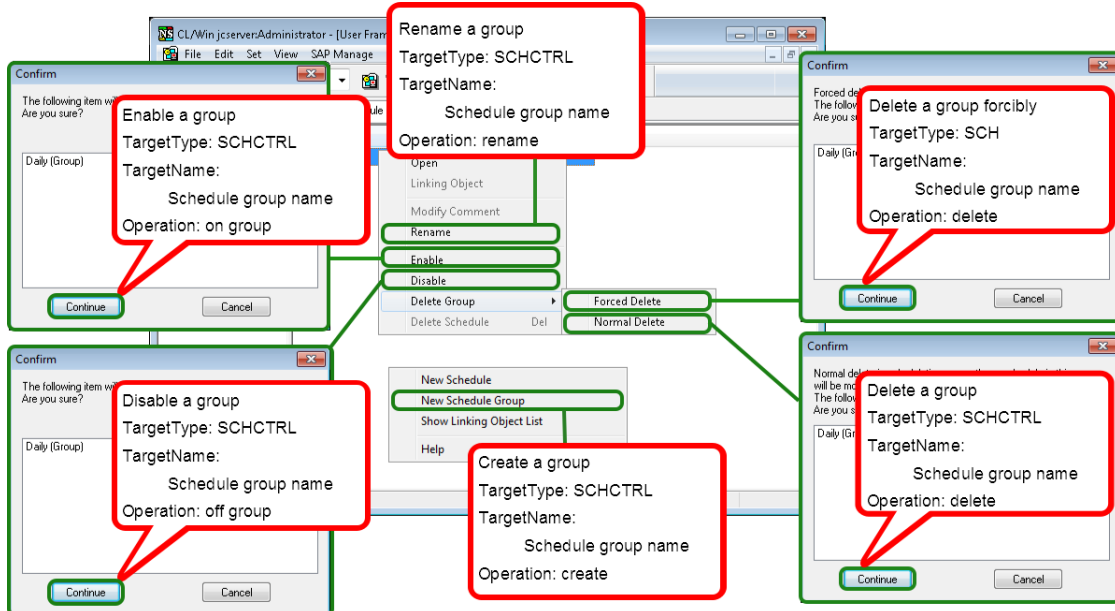


Figure 7.23. Operation for a Schedule Group

7.1.3.2. Operation for a Schedule

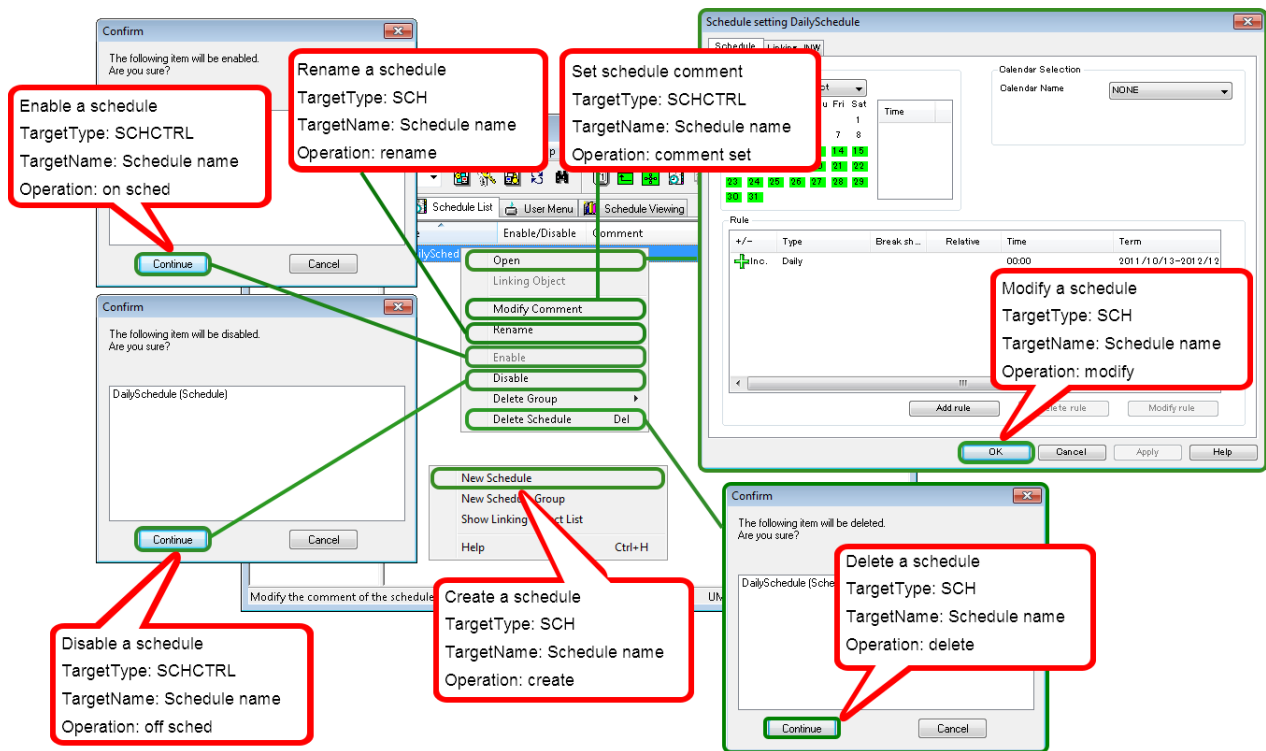


Figure 7.24. Operation for a Schedule

7.1.4. [Trigger List] Tab

Of the operations that can be executed on the [Trigger List] tab, an operation log is output for creating, deleting, enabling, and disabling triggers, as well as creating, editing, deleting, and performing other operations on the target text log.

7.1.4.1. Operation for a Trigger

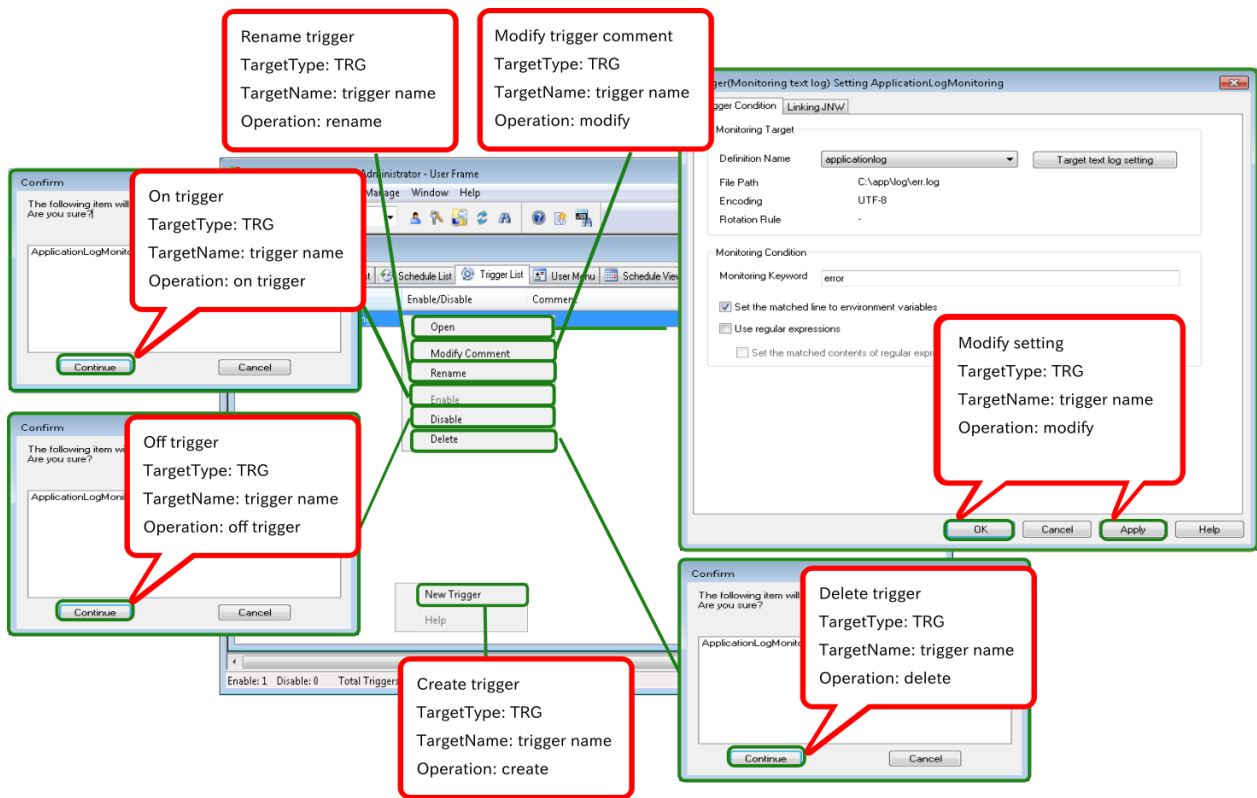


Figure 7.25. Operation for a Trigger

7.1.4.2. Operation for a Target Text Log

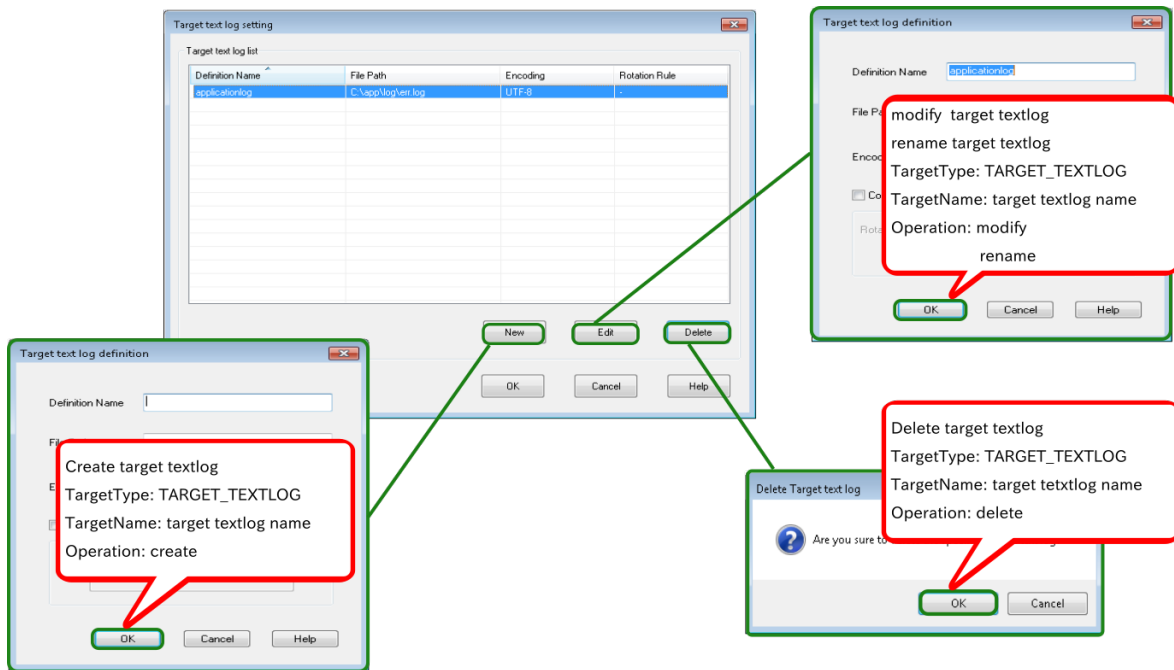


Figure 7.26. Operation for a Target Text Log

7.1.5. [User Menu] Tab

Of the operations that can be executed on the [User Menu] tab, an operation log is output for submissions of the job network.

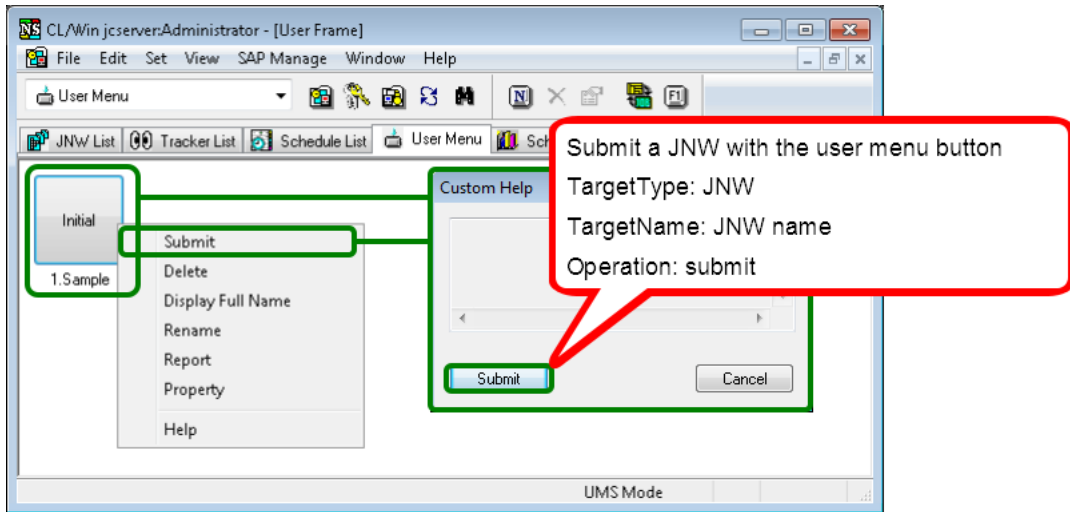


Figure 7.27. Operation on a User Menu

7.1.6. [Release Plan List] Tab

Of the operations that can be executed on the [Release Plan List] tab, an operation log is output for the following: creating, uploading, copying, deleting, enabling and disabling the release plan, as well as creating the release plan from the master definition, modifying time and comment of the release plan, and immediately releasing the plan.

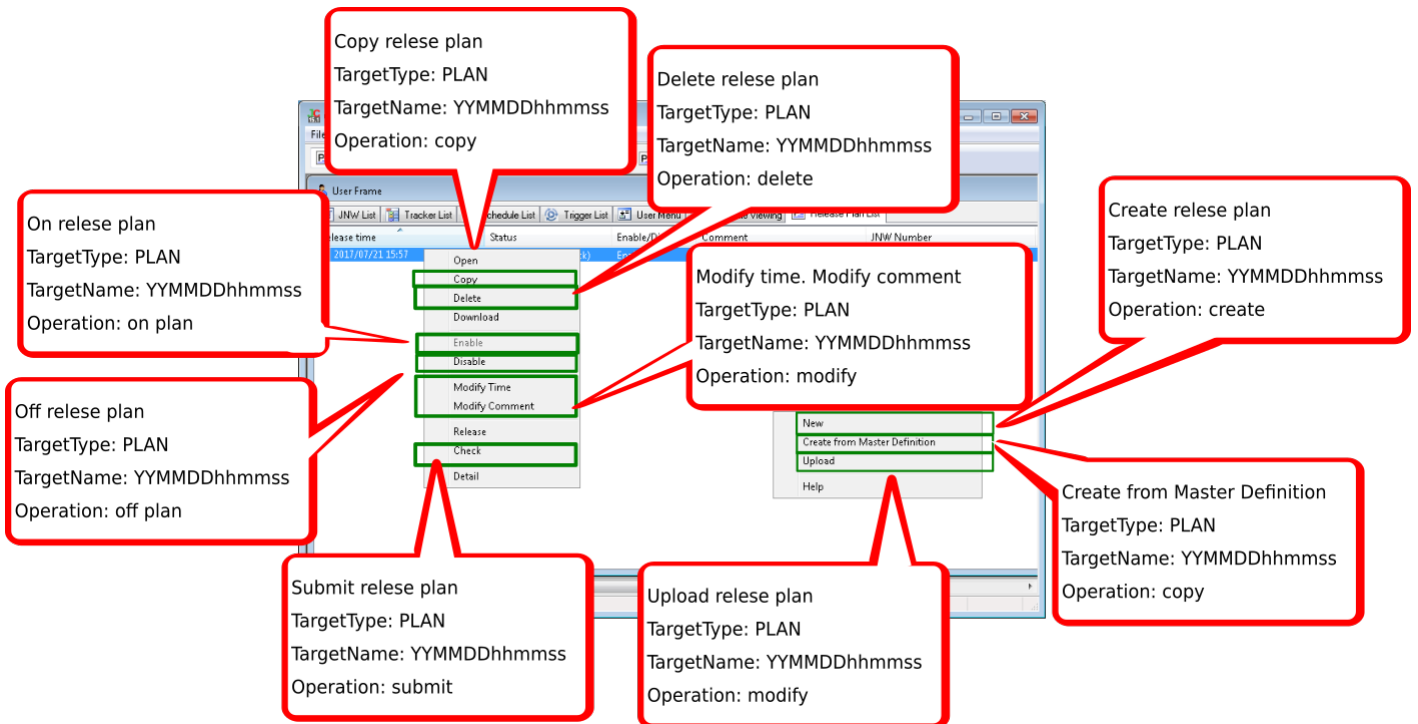


Figure 7.28. Operation for a Release Plan List

Of the operations that can be executed on [Release Plan], an operation log is output for saving the release plan.

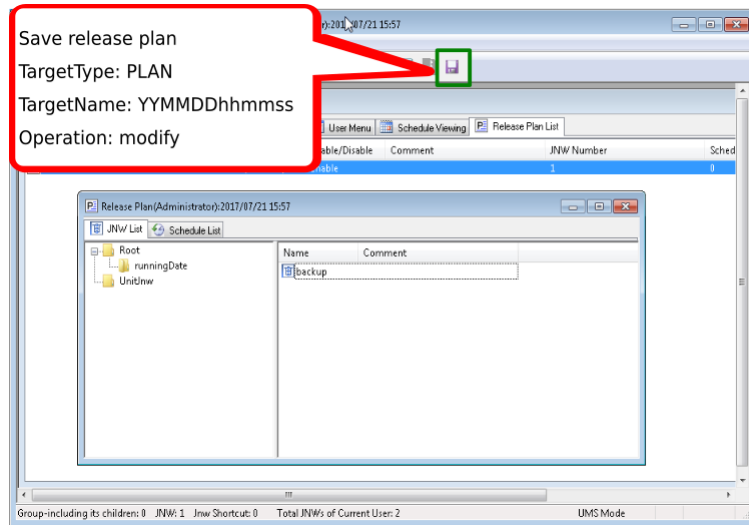


Figure 7.29. Operation for a Release Plan

7.1.7. [System Config] Dialog

An operation log is output for changes to the system environment setting in the [System Config] dialog.

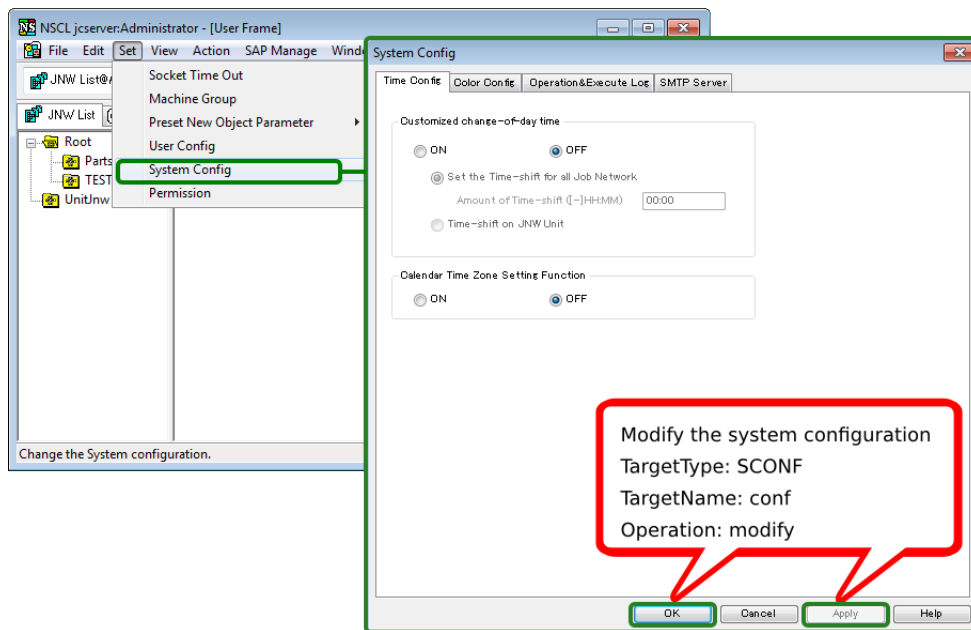


Figure 7.30. Operation for the System Environment Setting

7.1.8. [User Config] Dialog

An operation log is output for changes to each user environment setting in the [User Config] dialog.

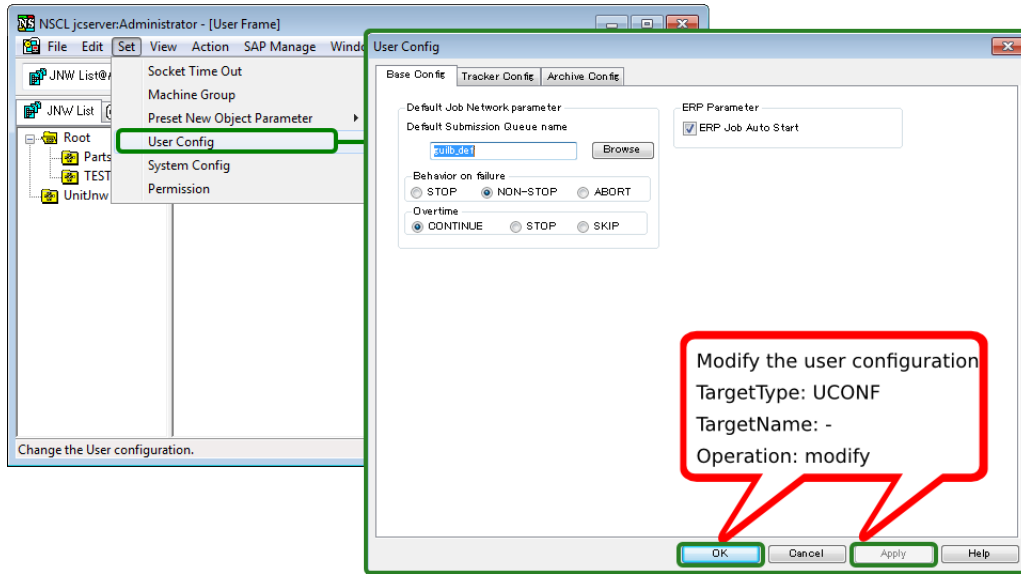


Figure 7.31. Operation for a User Environment Setting

7.1.9. Job Network Flow Window

An operation log is output for changes to job network flow, the script of each component in the job network flow, and parameters.

7.1.9.1. Job Network

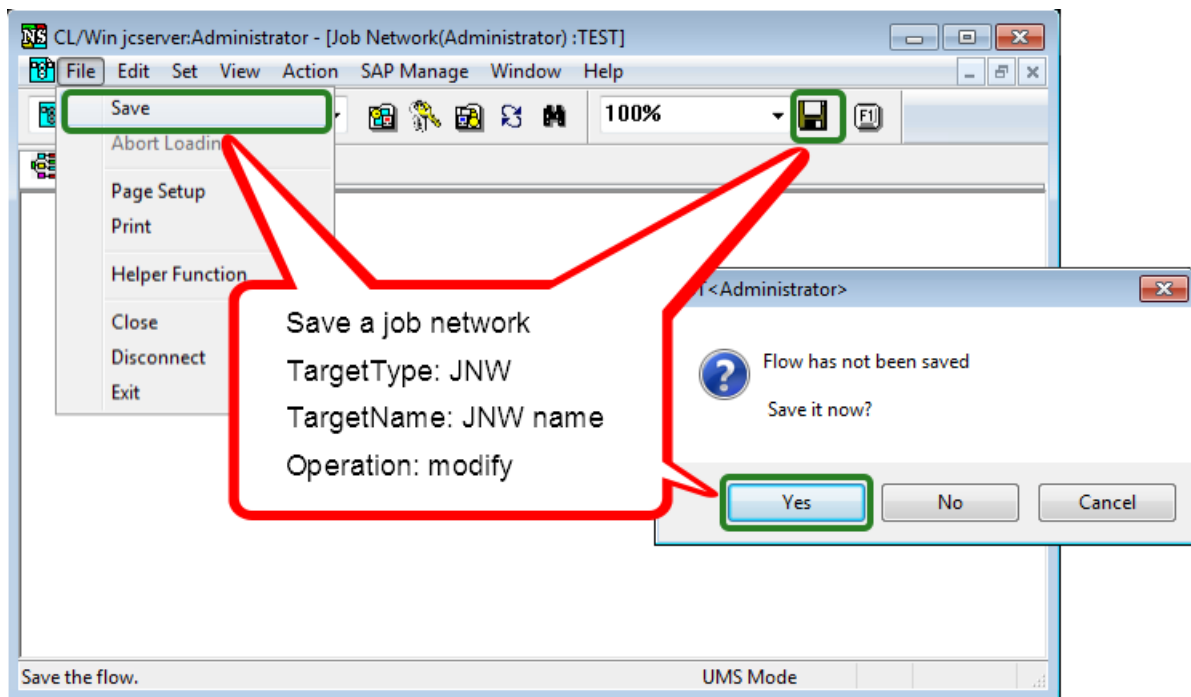


Figure 7.32. Operation for a Job Network Flow

7.1.9.2. Unit Job

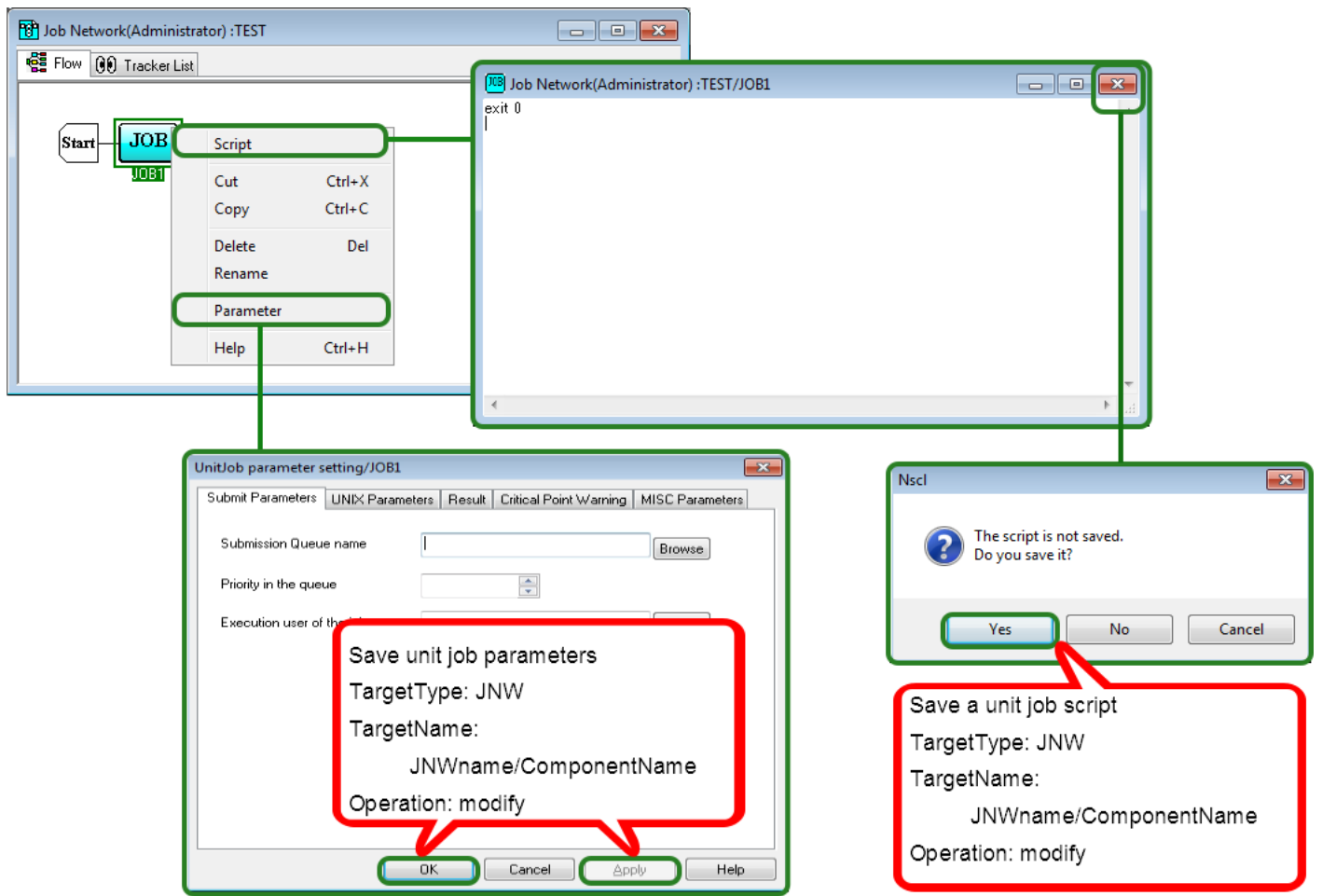


Figure 7.33. Operation for a Unit Job

7.1.9.3. ERP Job

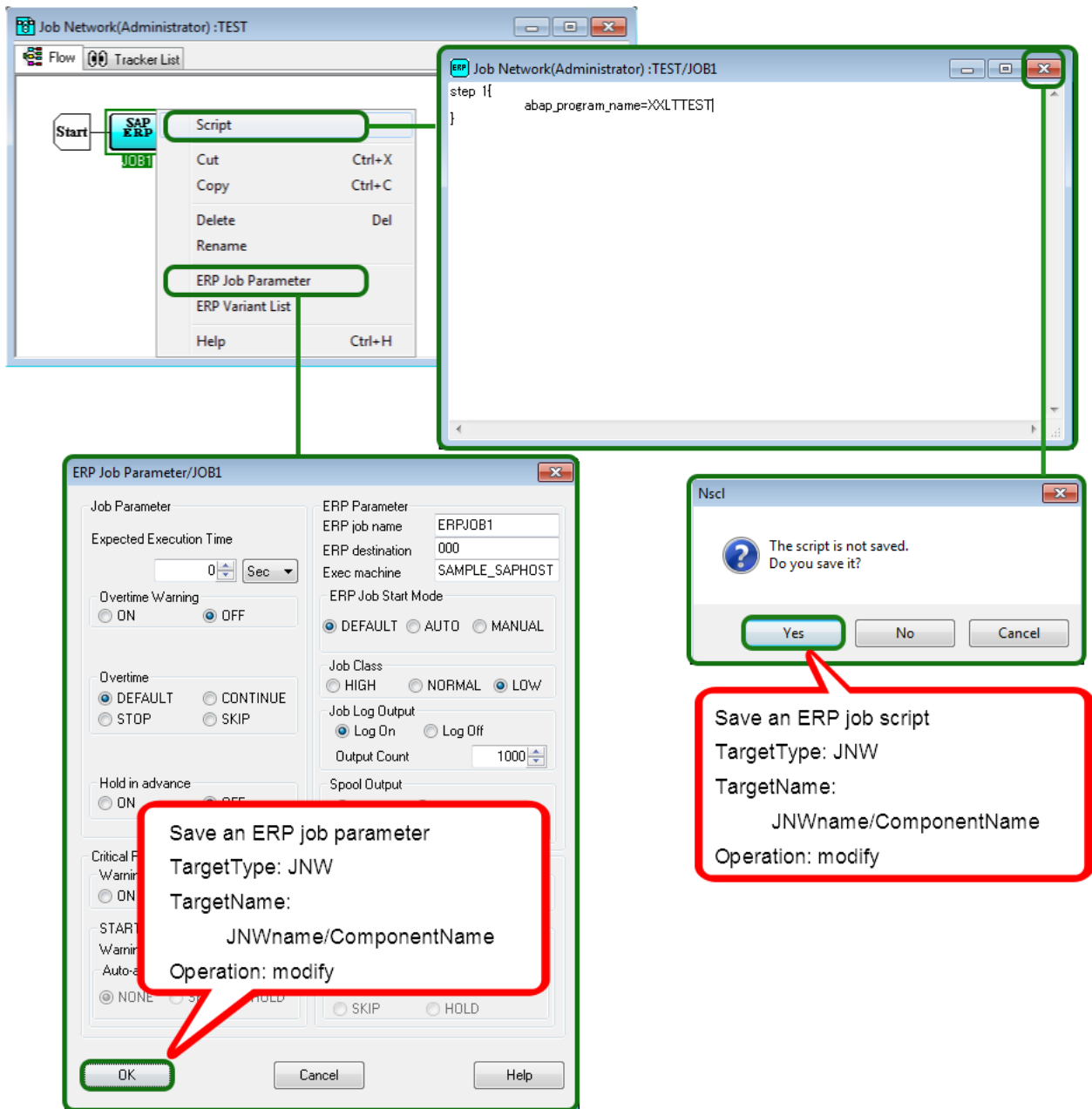


Figure 7.34. Operation for an ERP Job

7.1.9.4. BI Job

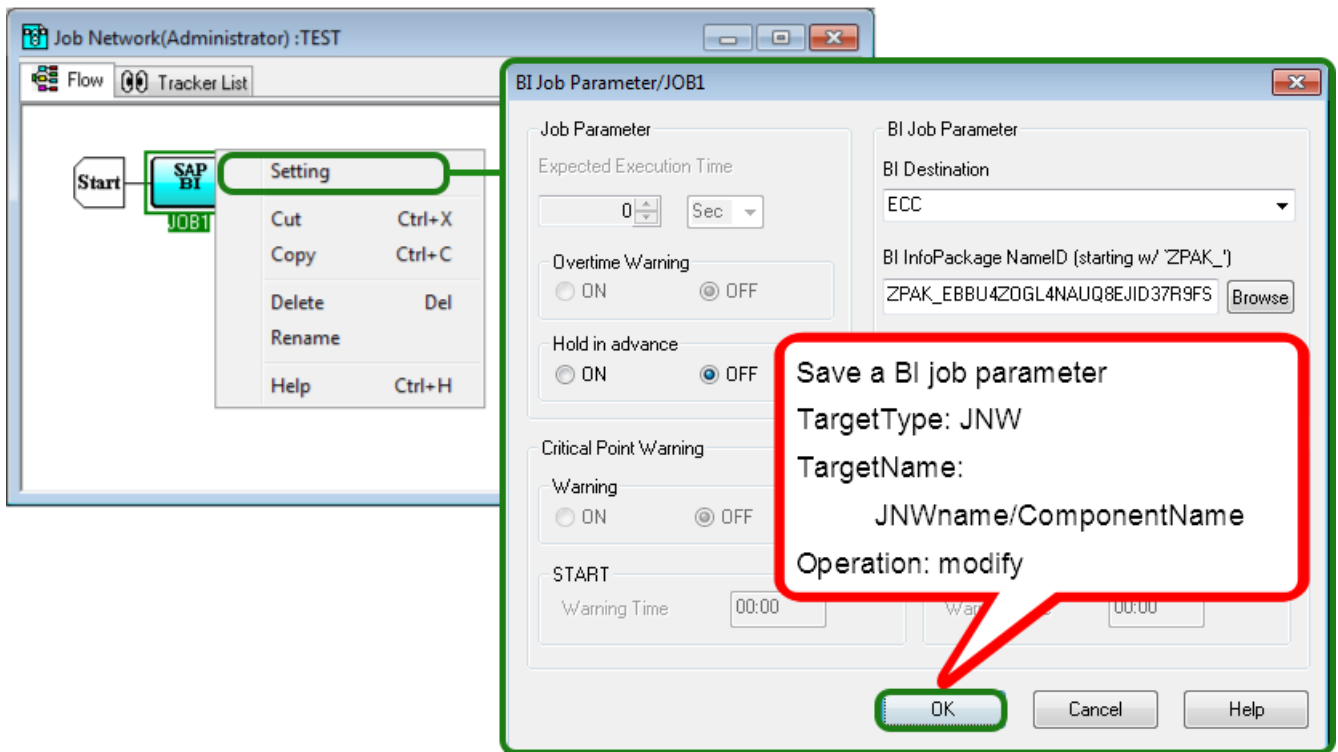


Figure 7.35. Operation for a BI Job

7.1.9.5. PC Job

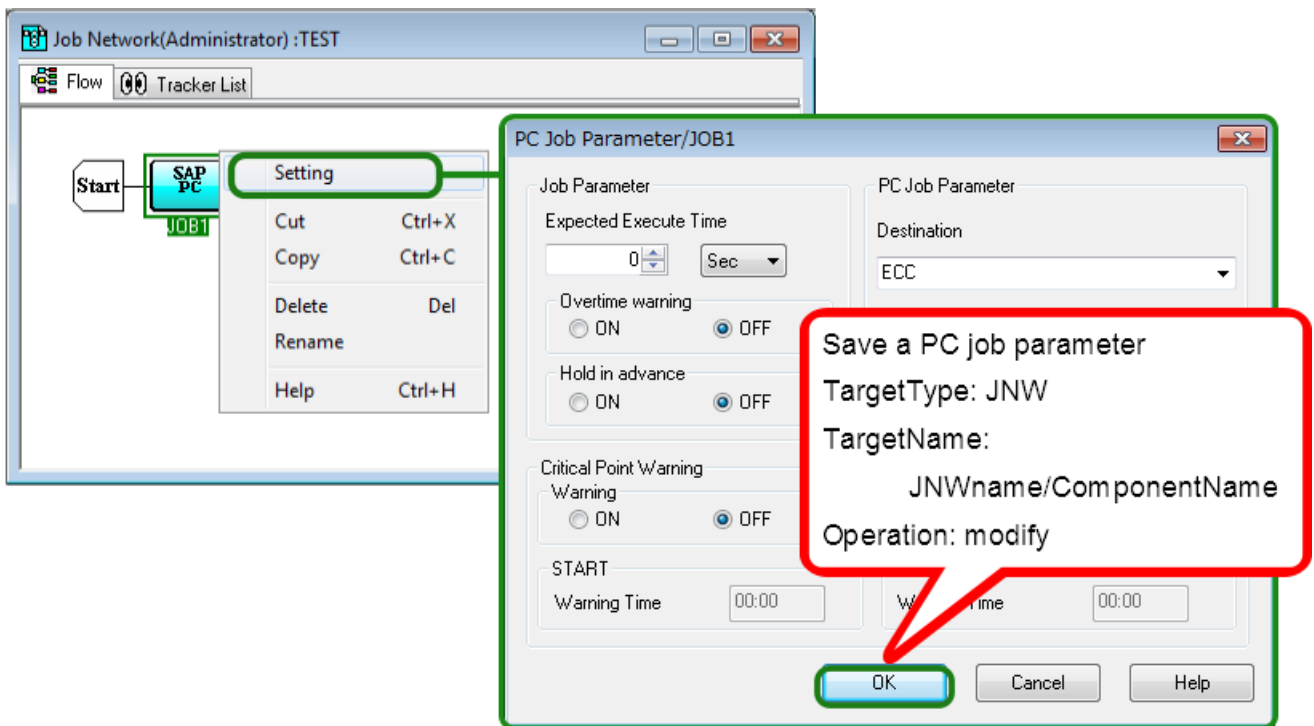


Figure 7.36. Operation for a PC Job

7.1.9.6. UCXSingle Job

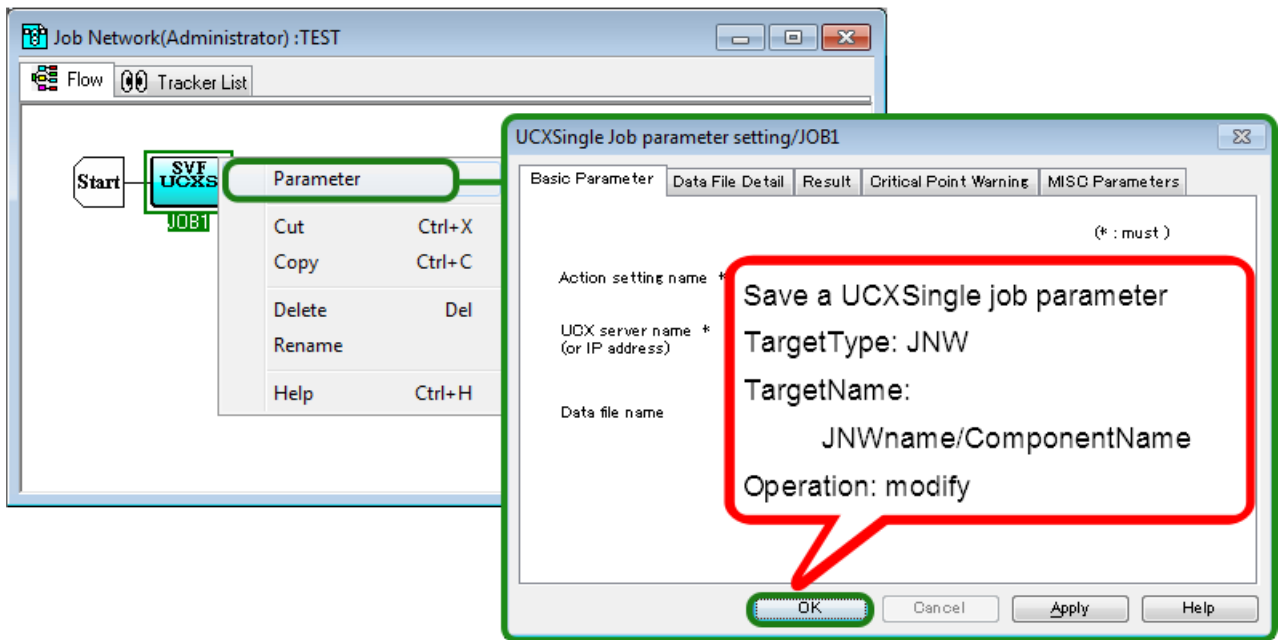


Figure 7.37. Operation for a UCXSingle Job

7.1.9.7. Dialog

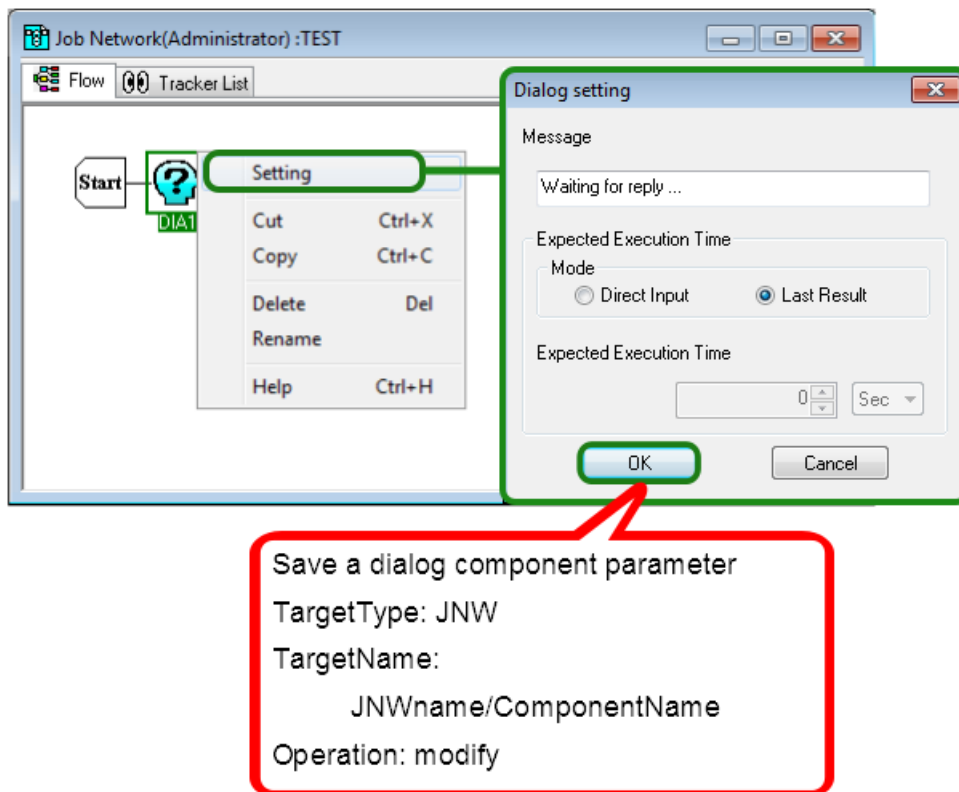


Figure 7.38. Operation for a Dialog Component

7.1.9.8. Continuity

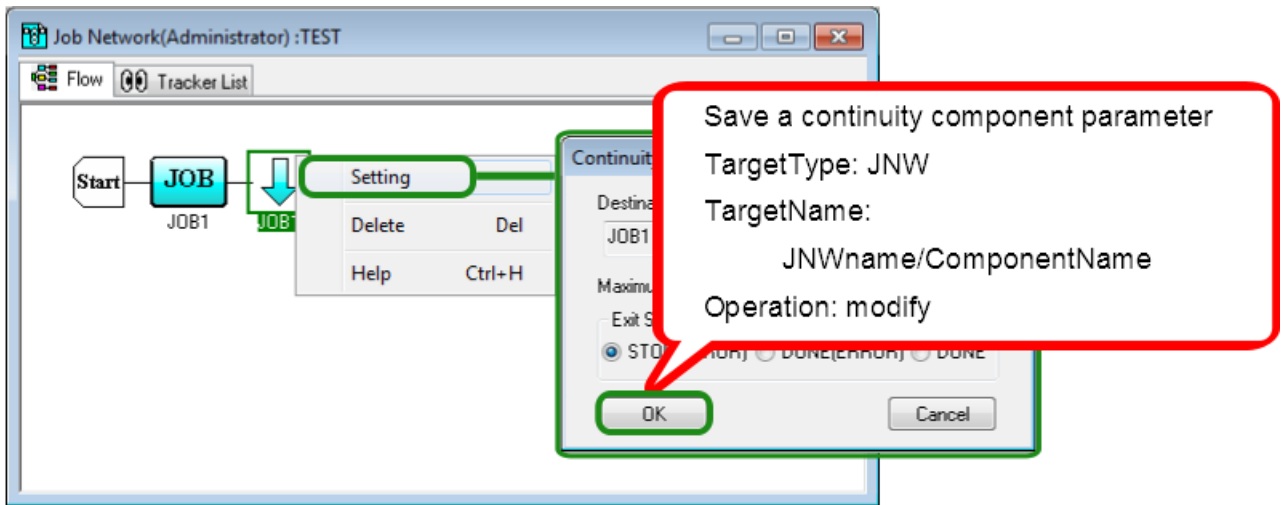


Figure 7.39. Operation for a Continuity Component

7.1.9.9. Event Transmission

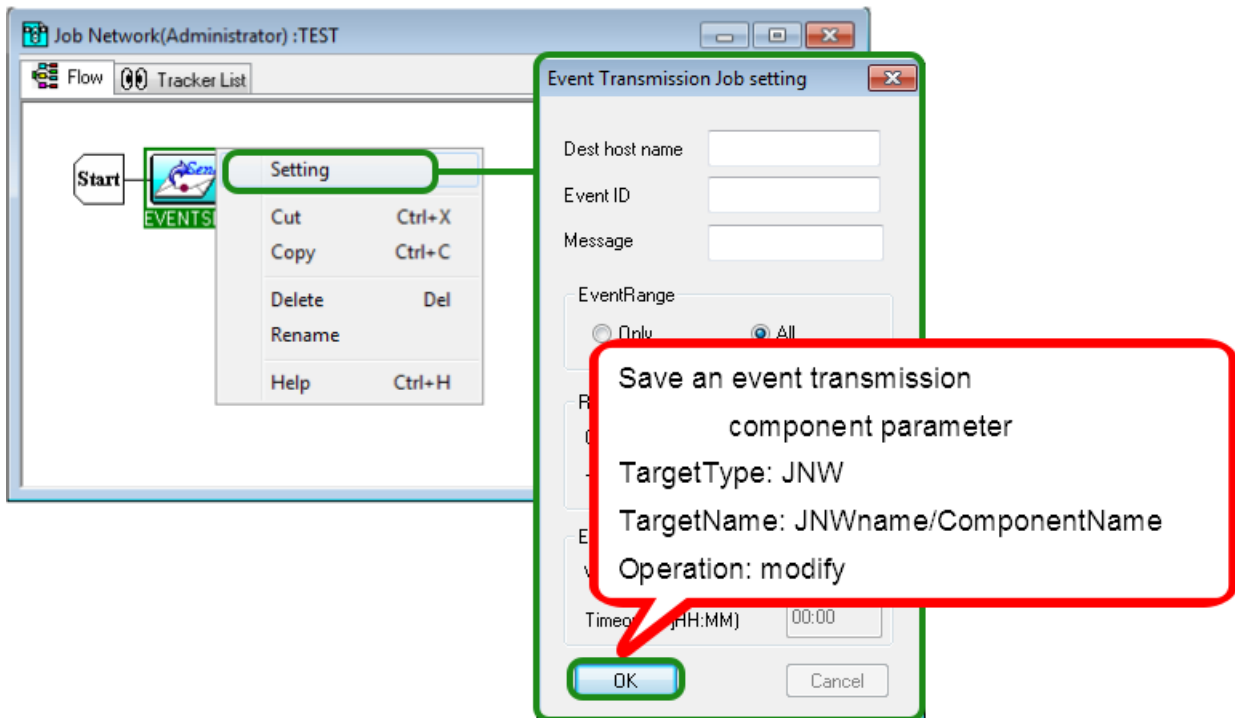


Figure 7.40. Operation for an Event Transmission Component

7.1.9.10. Event Reception

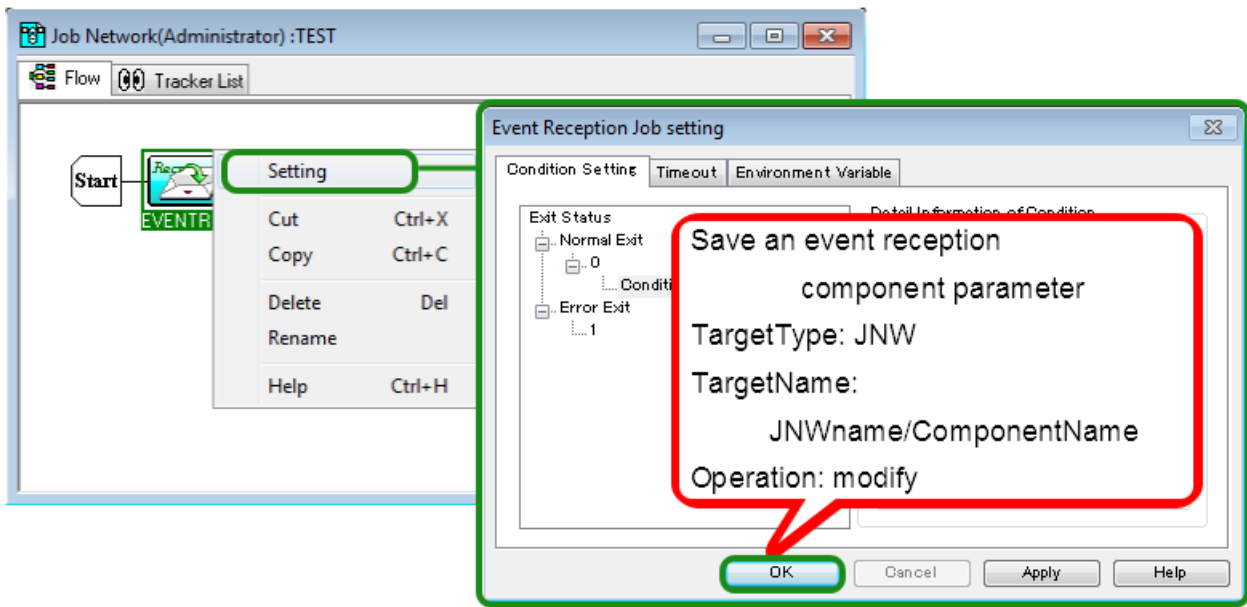


Figure 7.41. Operation for an Event Reception Component

7.2. Manager Frame

7.2.1. [Calendar List] Tab

Of the operations that can be executed on the [Calendar Menu] tab, an operation log is output for creating, editing, and deleting calendars.

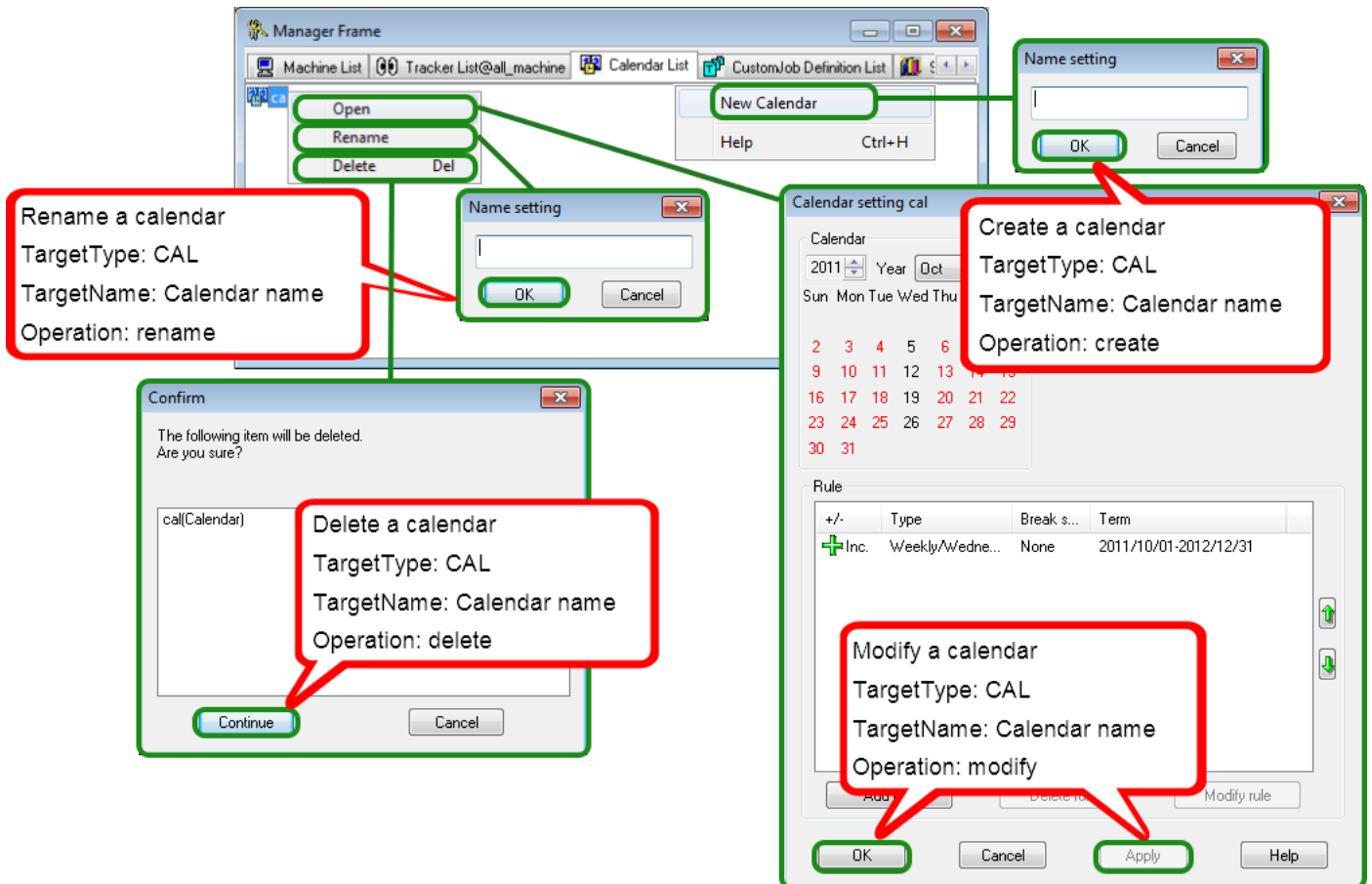


Figure 7.42. Operation for a Calendar in the Manager Frame

7.2.2. [Custom Job Definition List] Tab

Of the operations that can be executed on [Custom Job Definition List], an operation log is output for creating, editing, and deleting the custom job definition group and custom job definition, as well as performing other operations on the custom job definition.

7.2.2.1. Operation for a Custom Job Definition Group

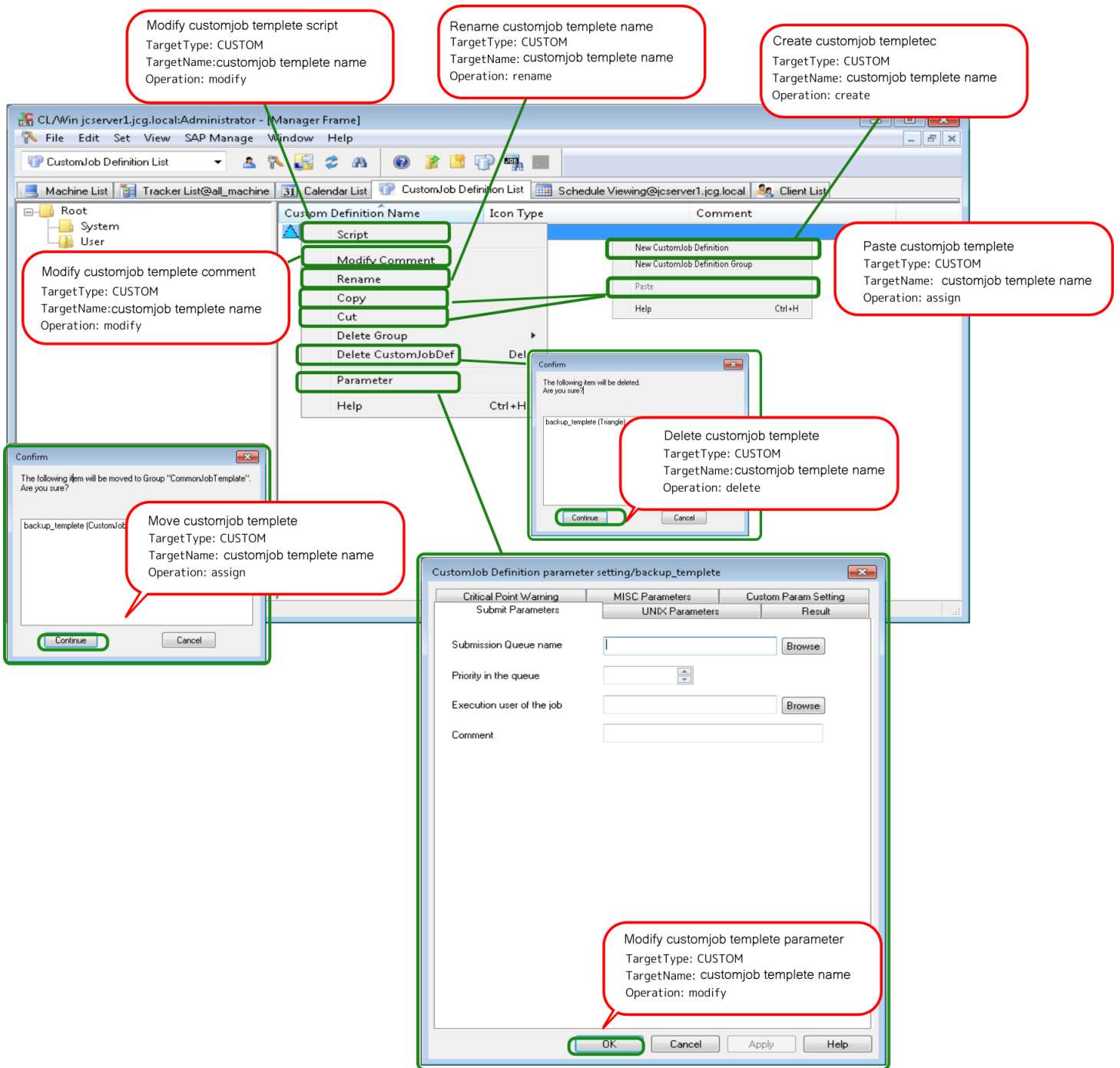


Figure 7.43. Operation for a Custom Job Definition Group

7.2.2.2. Operation for a Custom Job Definition

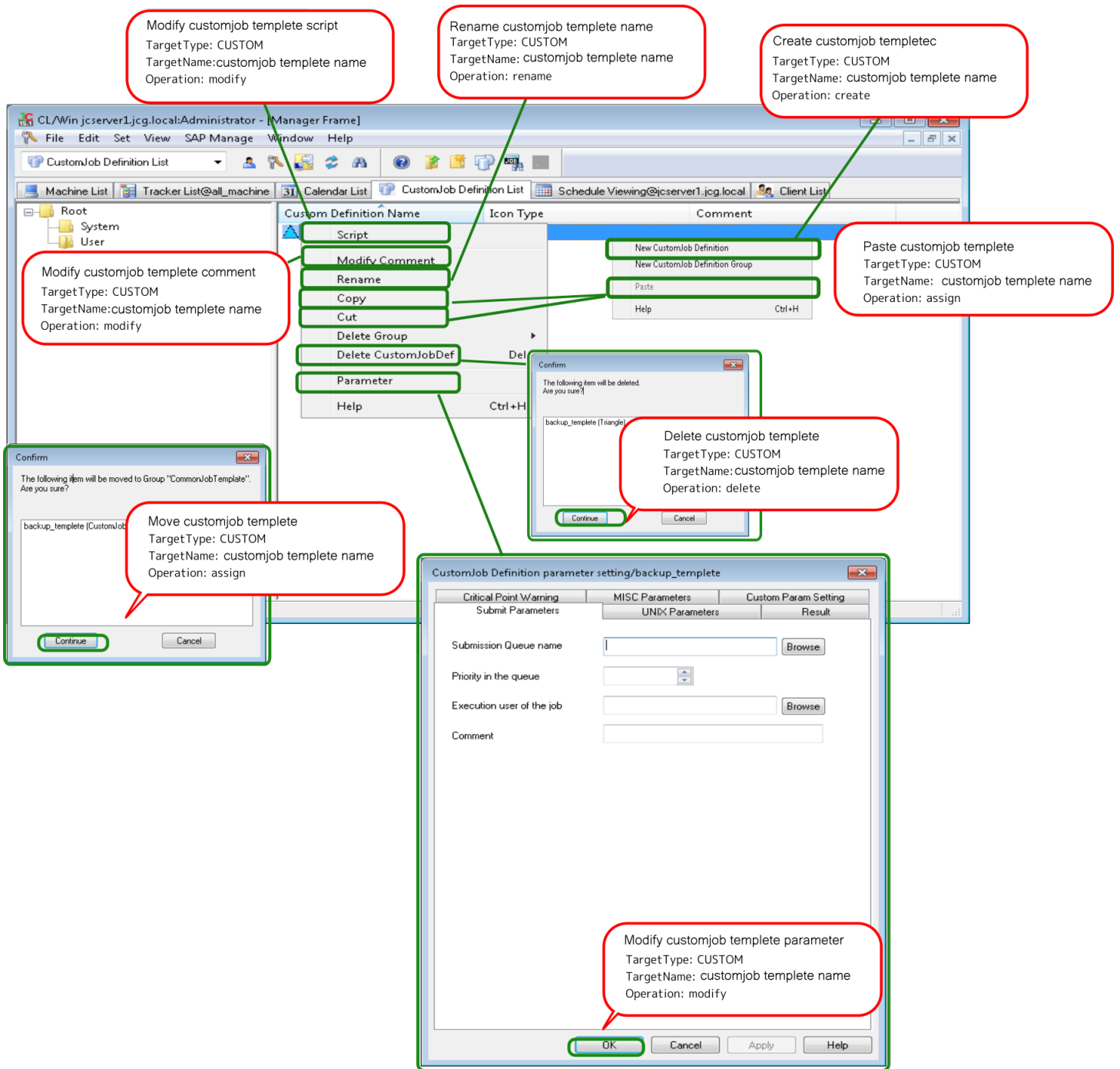


Figure 7.44. Operation for a Custom Job Definition

7.3. Other Operations

Logging into or out of CL/Win, [Permission], and [Machine group] can be executed in addition to the operations in the user and manager frames.

7.3.1. Login and Logout

An operation log is output when you log into or out of CL/Win.

7.3.1.1. Login

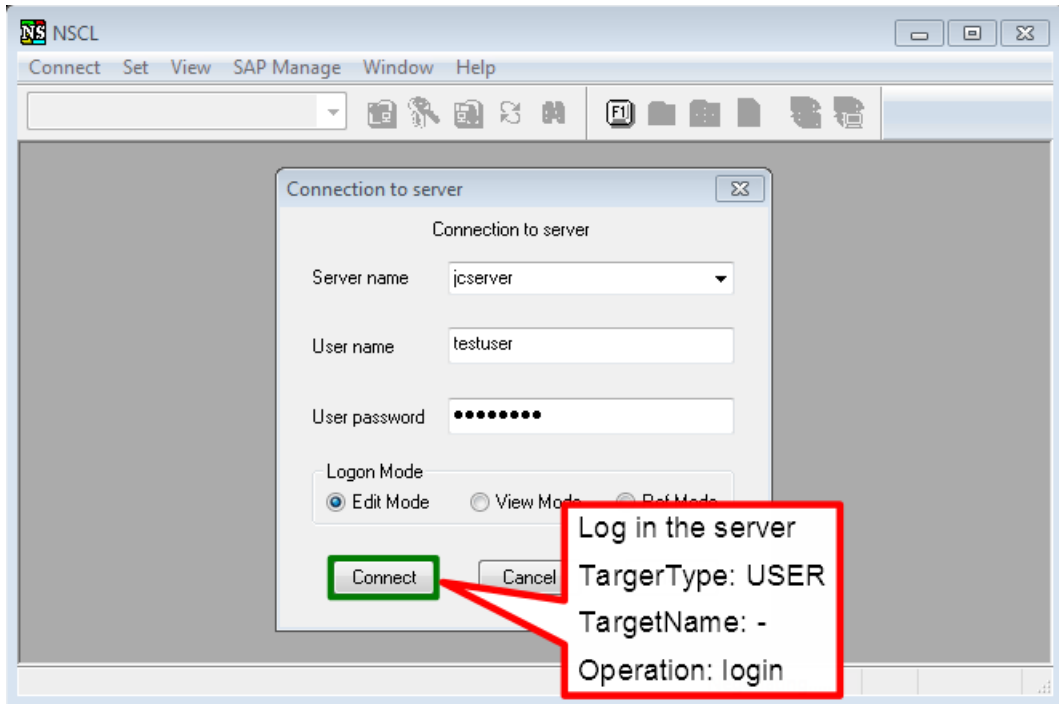


Figure 7.45. Operation on the Login Screen

7.3.1.2. Logout

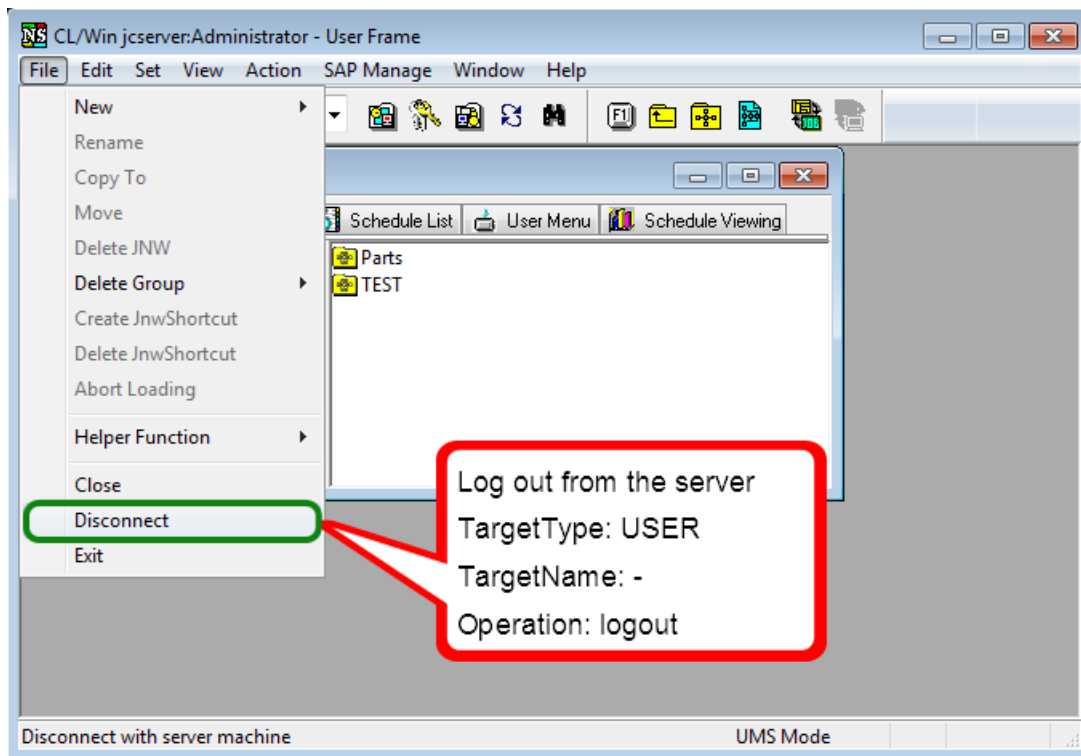



Figure 7.46. Logout Operation

 You can log out of and exit CL/Win by clicking [Exit] on the file menu or the [X] button at the right top of the screen.

7.3.2. [Permission] Dialog

An operation log is output when a change is made to the [Authority Group Setting] or [Authority Setting] tab in the [Permission] dialog.

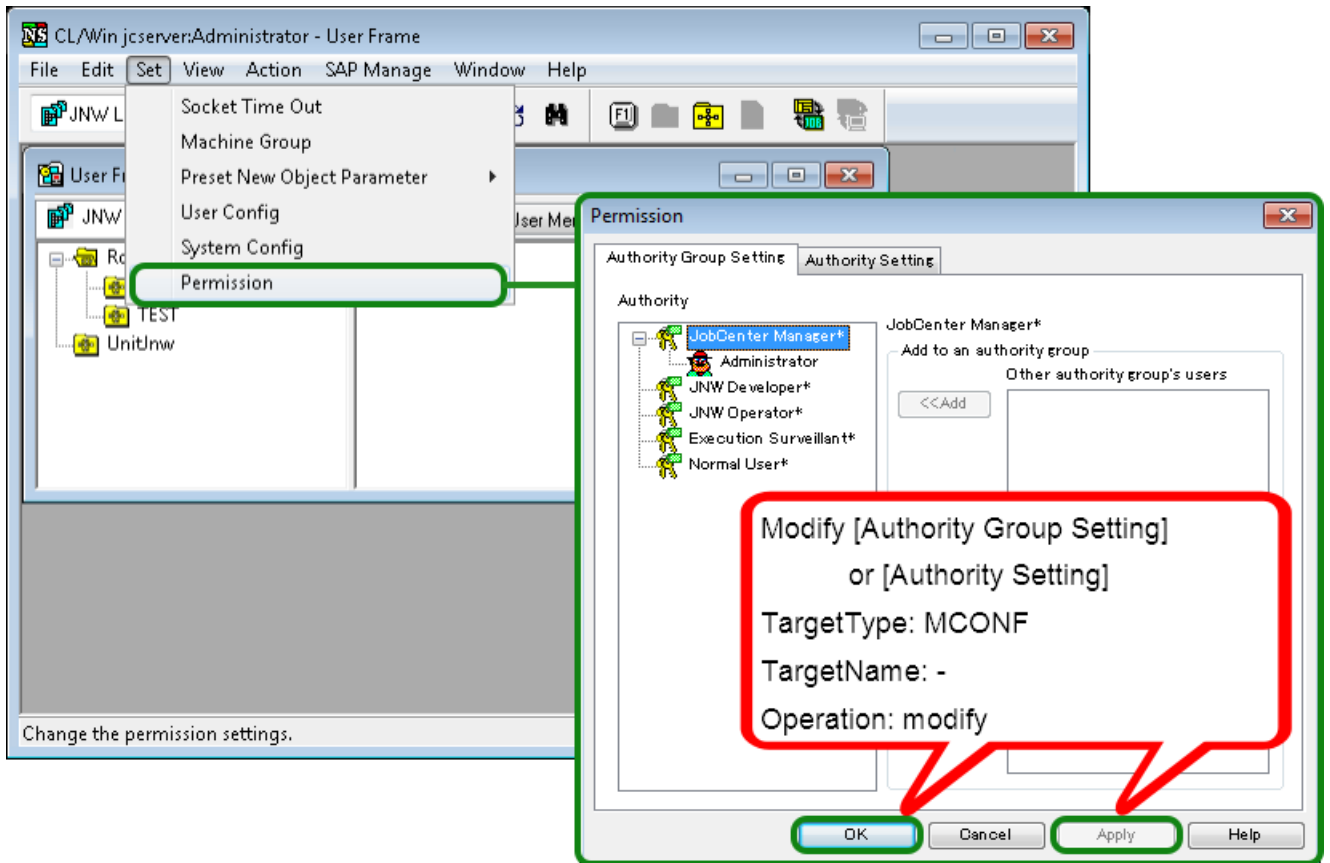


Figure 7.47. Operation for the Permission Setting

7.3.3. [Machine group] Dialog

An operation log is output when a member machine is added to or deleted from the machine group in the [Machine group] dialog.

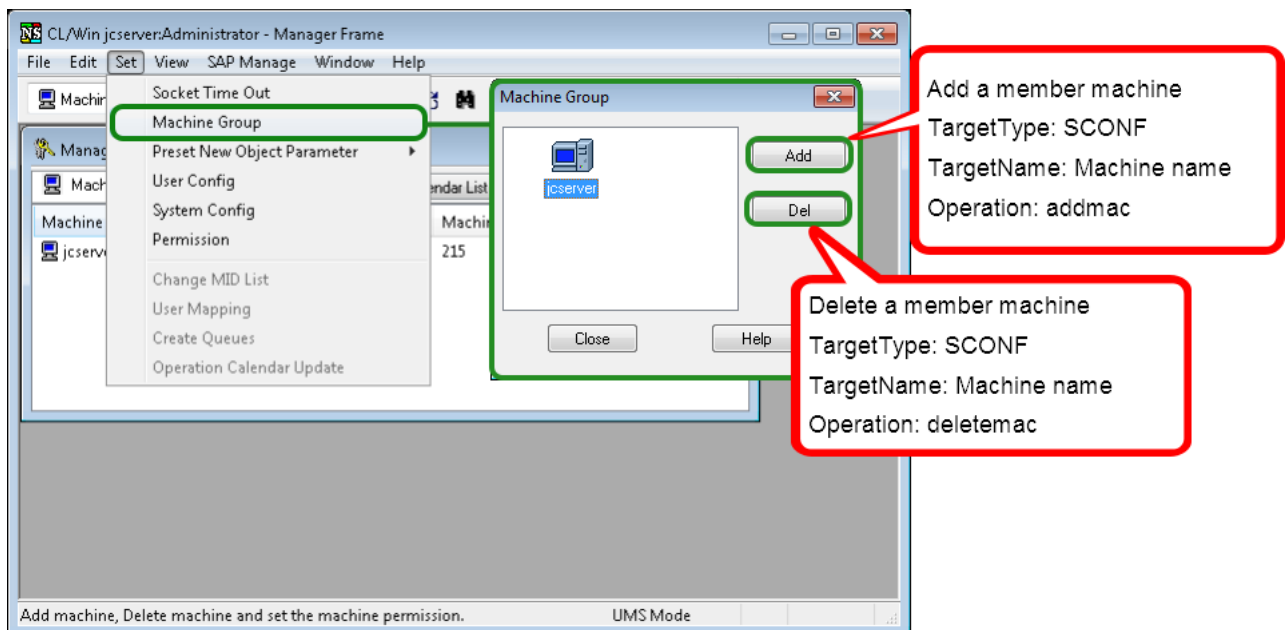


Figure 7.48. Operation for a Machine Group

7.3.4. Upload and Download JPF

An operation log is output when you upload or download a JPF file, but it is not output when you check a JPF file.

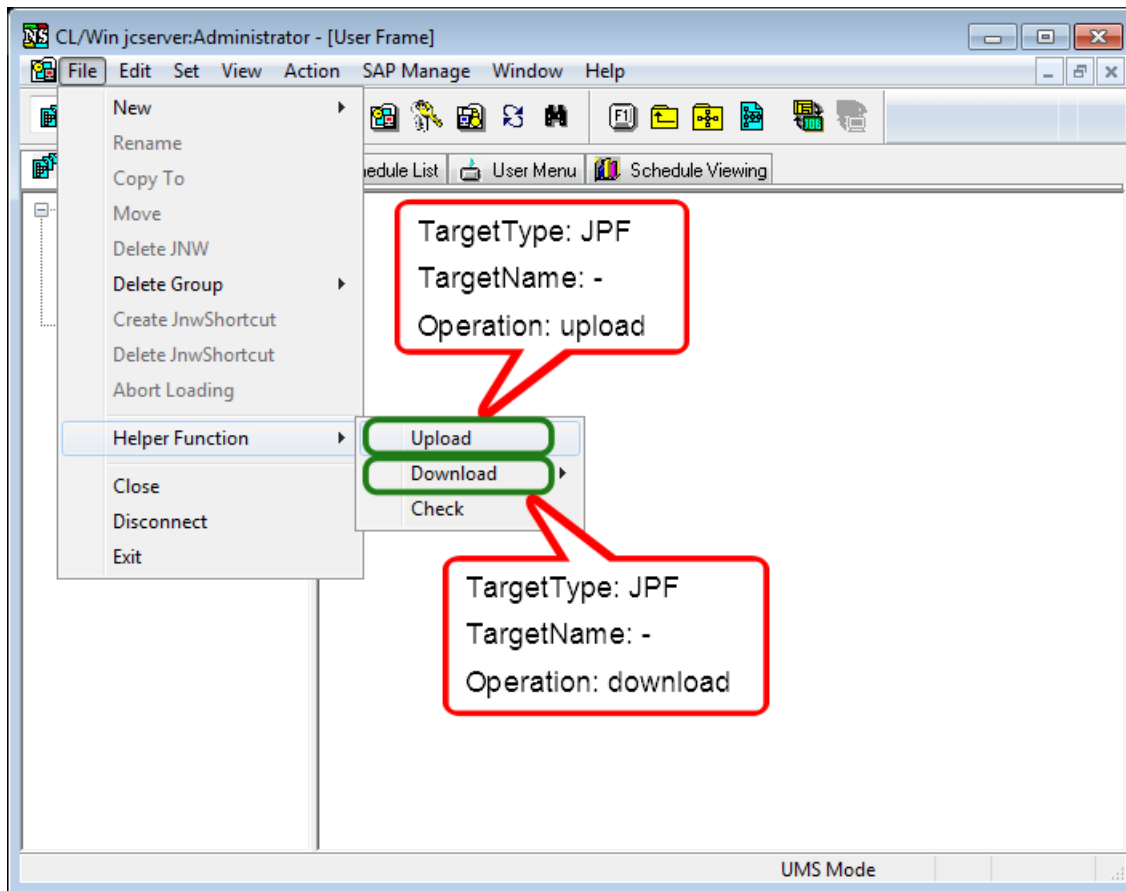


Figure 7.49. Upload and Download JPF

