

Installation Guide

JobCenter

R15.2

-
- Windows, Windows Server, Microsoft Azure, Microsoft Excel and Internet Explorer are trademarks or registered trademarks of Microsoft Corporation in the United States and other countries.
 - UNIX is exclusively licensed by The Open Group which is a registered trademark in the United States and other countries.
 - HP-UX is a trademark of Hewlett-Packard.
 - AIX is a trademark of IBM Corporation.
 - Linux is a registered trademark of Linus Torvalds in the United States and other countries.
 - Oracle Linux, Oracle Clusterware and Java are registered trademarks of Oracle and/or its affiliates.
 - Red Hat is a registered trademark of Red Hat, Inc.
 - SUSE is a registered trademark of Novell, Inc.
 - NQS is a Network Queuing System that was developed by Sterling Software for NASA Ames Research Center.
 - SAP ERP, SAP NetWeaver BW and ABAP are trademarks or registered trademarks of SAP AG.
 - Amazon Web Services is a trademark of Amazon.com, Inc. or its affiliates registered in the United States and other countries.
 - iPad and Safari are trademarks of Apple, Inc. registered in the United States and other countries.
 - All other software and hardware products mentioned herein are trademarks or registered trademarks of their respective owners.

The symbols (R), TM, and (c) are omitted in this document.

Precautions on exporting

This product (software) falls under a category of technology where establishment specified in the foreign exchange currency law is regulated. Please file necessary applications, such as permission for trade, with the Japanese government prior to exporting this product. Contact the dealer where you purchased the product or our nearest sales office for information on documents necessary for filing such applications.

Introduction

This manual is to describe how to install and upgrade JobCenter. Note that the screens contained in this manual may differ from actual screens.

Note that this document is subject to change without prior notice.

1. How to read the JobCenter manuals

If you are installing JobCenter or upgrading it

→ Read this manual.

If you are using JobCenter for the first time

→ Read the Quick Start Guide in the order of its contents.

If you wish to understand the basic operating methods of JobCenter

→ Read the Basic Guide in the order of its contents.

If you wish to understand the construction of environments and the setting of various functions




→ Refer to the Environment Guide.

If you wish to know about other functions

→ Read the related manuals, referring to the manuals pertaining to particular functions to be used.

2. Legend

The legend used in this manual is explained below.

	Information that you should pay attention to.
	Supplementary information about a description in the text.
	Supplementary tip about a description in the text.
Note	Explanation of a note that appears in the text.
—	The underlined parts in the descriptions for the installation window for UNIX mean inputs from a keyboard.

3. Related manuals

The following are manuals related to JobCenter. They are contained in JobCenter Media.

For information on the latest manuals, refer to the download page of the JobCenter product site.

<https://www.nec.com/en/global/prod/masterscope/jobcenter/en/support.html>

Document title	Overview
JobCenter Installation Guide	Describes how to newly install JobCenter or upgrade it.
JobCenter Quick Start Guide (Japanese only)	Describes the basic functions of JobCenter, as well as a complete set of operations, for first-time users of JobCenter.
JobCenter Basic Guide	Describes the basic functions of JobCenter, as well as how to operate it.
JobCenter Environment Guide	Describes various setting methods on the construction of environments required for using JobCenter, transferring of environment, linkage with other products, etc.
JobCenter Guide for using NQS function (Japanese only)	Describes methods of using NQS functions, the basis of JobCenter, from JobCenter.
JobCenter Guide for using operation logs and execution logs	Describes the functions for acquiring operation logs and job network execution logs from JobCenter CL/Win, as well as how to set the functions.
JobCenter Command Reference	Describes JobCenter commands for performing job network entry and execution state referencing, etc. from the command line like a GUI.
JobCenter Guide for using Cluster function	Describes linkage methods for operating JobCenter in the cluster system.
JobCenter Guide for using Helper function (Japanese only)	Describes the following three functions that enable efficient operation of JobCenter using Excel: JobCenter Definition Helper (definition information maintenance), JobCenter Report Helper (business report creation), and JobCenter Analysis Helper (performance analysis).
JobCenter Guide for using SAP function (Japanese only)	Describes how to link JobCenter and SAP.
JobCenter Guide for using WebOTX Batch Server linkage function (Japanese only)	Describes how to link JobCenter and WebOTX Batch Server.
JobCenter Guide for Using the Web Function	Describes JobCenter CL/Web that is a function to monitor jobs by using a web browser.
JobCenter Guide for using the text definition function (Japanese only)	Describes how to define a job network, schedule, calendar, custom job template by using a text file.
JobCenter Guide for upgrading the version and applying the patches in a cluster environment (Japanese only)	Describes how to upgrade the version of JobCenter and apply the patches in a cluster environment.
JobCenter R15.2 Release Notes	Provides the information specific to JobCenter R15.2.

4. Revision history

Edition	Date of revision	Item	Format	Contents of revision
1	July 20, 2018	New	-	First Edition

Table of Contents

Introduction	iii
1. How to read the JobCenter manuals	iv
2. Legend	v
3. Related manuals	vi
4. Revision history	vii
1. Operating Environment of JobCenter	1
2. Installation	2
2.1. Preparations for Installation	3
2.1.1. Checking Notes in Advance	3
2.1.2. Setting Up a Network	9
2.1.3. Assigning Machine IDs	10
2.2. Installing LicenseManager	11
2.2.1. HP-UX (IPF) Version	11
2.2.2. Linux Version	12
2.2.3. AIX Version	13
2.2.4. Windows Version (Normal Installation)	14
2.2.5. Windows Version (Silent Installation)	17
2.3. Codeword Registration	19
2.3.1. Procedure for Registering a Codeword	19
2.3.2. Messages That May Appear After LicenseManager Is Installed	21
2.4. Installing JobCenter MG/SV	23
2.4.1. HP-UX Version	23
2.4.2. Linux Version	23
2.4.3. AIX Version	25
2.4.4. Windows Version (Normal Installation)	26
2.4.5. Windows Version (Silent installation)	39
2.5. Installing JobCenter CL/Win	49
2.5.1. Normal Installation	49
2.5.2. Silent Installation	54
3. Setting Up the Execution Environment (UNIX Version)	56
3.1. Setting Up JobCenter (Normal Setup)	57
3.1.1. Executing nssetup (Setup Command)	57
3.1.2. Setting the Machine ID of JobCenter	57
3.1.3. Selecting the Language Environment Used by JobCenter	58
3.1.4. Setting Up the UMS Environment	59
3.1.5. Changing the Administrator User Settings	60
3.1.6. Setting a Password	61
3.1.7. Setting Up the .rhosts File	62
3.2. Setting up JobCenter (Silent Setup)	63
3.2.1. Creating the Setting File	63
3.2.2. Checking the Setting File	64
3.2.3. Silent Setup	64
3.2.4. Error Messages	65
3.3. Work Necessary After JobCenter Setup	66
3.4. Setting Up the IPv6 Environment	67
4. Uninstallation	68
4.1. Uninstalling LicenseManager	69
4.1.1. UNIX Version	69
4.1.2. Windows Version	69
4.2. Uninstalling JobCenter MG and JobCenter SV	71
4.2.1. UNIX Version	71
4.2.2. Windows Version	72
4.3. Uninstalling JobCenter CL/Win	75
4.3.1. Uninstalling the Packages	75

4.3.2. Deleting Registry-Related Data	75
5. Version Upgrade	77
5.1. UNIX Version	78
5.1.1. Notes on version upgrade	78
5.1.2. Version Upgrade with Inheriting NQS-Related Data	78
5.1.3. Version Upgrade without Inheriting NQS-Related Data	80
5.2. Windows Version	81
5.2.1. Notes on version upgrade	81
5.2.2. Windows Version (Normal Version Upgrade)	82
5.2.3. Windows Version (Silent Version Upgrade)	84
6. Checking the Version	87
6.1. UNIX Version	88
6.1.1. JobCenter MG/SV	88
6.2. Windows Version	89
6.2.1. JobCenter SV	89
6.2.2. CL/Win	89

List of Tables

2.1. Fixed disk size and memory size (Linux version)	12
2.2. Fixed disk size and memory size (Windows version)	14
2.3. Configurable parameters in the setting file	41
2.4. Notes on the setting file parameters	43
2.5. Error messages on setting file check	45
2.6. Operation modes and possible operations	52
2.7. Window to use and shortcut to create	53
3.1. Setting file parameters	63
3.2. Silent setup error messages	65
4.1. Package names required to be removed and remove commands for the packages for each OS	71
6.1. Version check command of JobCenter for each OS	88

1 Operating Environment of JobCenter

For information on the operating environment of JobCenter and the supported operating systems, refer to in <Release Notes>Chapter 3, 「Operating Environment」 .

2 Installation

This chapter describes how to install LicenseManager, JobCenter MG/SV, and JobCenter CL/Win. To do this, follow the steps below.

Preparations for Installation	: 2.1	
LicenseManager Installation	: 2.2	
Codeword Registration	: 2.3	
JobCenter MG/SV Installation	: 2.4	} Install only the necessary packages.
JobCenter CL/Win Installation	: 2.5	

Figure 2.1. Installation flow



To install any JobCenter product other than those mentioned above, refer to the installation procedure described in the manual of that product.

2.1. Preparations for Installation

Make the necessary settings before starting installation.

2.1.1. Checking Notes in Advance

- In JobCenter, user names that meet any of the following conditions cannot be used.
 - "CommonJNW"
 - Same as the host name or computer name.
 - Longer than 15 bytes
 - Includes multiple-byte characters, spaces or tabs.
 - Includes one of the following symbols: ! " # \$ % & ' () * , . / : ; < = > ? @ [\] ^ ` { | } ~

■ Notes for UNIX

- LDAP linkage is not directly supported. However, if the LDAP server password encryption format is crypt and it is possible to access the user name by using the OS library function `getpwnam` or `getpwent` in the same way as when performing normal management by using `/etc/passwd`, LDAP linkage can be handled as a general user.
- Environments in which access control is specified on an individual user basis, such as HP-UX SMSE (Standard Mode Security Extensions), are not directly supported. However, if JobCenter is able to access the user name by using `getpwnam` or `getpwent`, in the same way as when performing normal management by using `/etc/passwd`, LDAP linkage can be handled as a general user.

In this case, the security functions provided in the SMSE environment, such as account locking, are not supported. Therefore, the number of times password authentication failed when logging into or connecting to MG or SV using CL/Win is not counted, nor is the login failure recorded.

- The 755 access right is necessary as the installation directory permission. Therefore, do not mask the access right for which the root user's `umask` value is 755 at installation.
- If you are to set queue access restrictions or such on a group, using NQS settings of JobCenter, you need to use the same group name and the same gid for all nodes comprising the cluster site.
- All the names and uids of the accounts that use JobCenter must be unified with the OS function on all nodes that make up the cluster site.

Otherwise, the user mapping might not match, making it impossible to continue job execution if the cluster package fails over.

- Operation is not guaranteed if an initialization file in the JobCenter installation directory is changed in a way that is outside the manual specification range.
- The Linux version of JobCenter does not support SELinux. The SELinux setting must be permissive or disabled. If the setting is enforcing, jobs might not be executed normally.
- For Red Hat Enterprise Linux 7 or Oracle Linux 7 or SUSE Linux Enterprise Server 12 or later, the service that manages the OS network must be enabled in advance. For example, enable the following service in the environment where NetworkManager is used.
 - `NetworkManager-wait-online.service`
 - `NetworkManager.service`

If the service that manages the network is disabled on OS, JobCenter may fail to start automatically.

- If any directories used by JobCenter are subject to on-access virus scanning, jobs may not be executed successfully. Therefore, exclude the following directories used by JobCenter from the targets of the on-access scan.
 - /usr/spool/nqs
 - (For a cluster environment) <JobCenterDB path>/nqs on the shared disk

■ Notes for Windows

- JobCenter supports only the disk space formatted by NTFS (FAT32 is not permitted).

Use NTFS to format the disk space (both the local and the cluster site) used by JobCenter and the disk space related to the JobCenter function.

Note, however, that unless the automatic creation of 8.3, "Short file name" is set to OFF, the performance of NTFS file systems drops significantly when a large number of files (10,000 or so) are created in a single folder.

In an environment in which a large number of trackers are created in a short time or a large-scale job network is created and input, it might be necessary to disable 8.3 short file name by using the fsutil behavior command of the OS (by specifying fsutil behavior set disable8dot3 1).

- Because JobCenter is a multi-platform linkage product, a host name starting with a number cannot be used. In addition, a single-character host name is interpreted as a drive name, and installation is not performed in this case.
- The account specified as the JobCenter administrator must belong to the Administrators group on the local machine.
- If the local site and cluster site are operated at the same time, the JobCenter administrator at the local site serves as the JobCenter administrator at the cluster site. Carefully consider this before installation.
- If a local user is selected as the JobCenter administrator in the domain environment, only local users can use JobCenter. If the JobCenter administrator is a domain user, both local and domain users can use JobCenter.
- If a domain user is selected as the JobCenter administrator in a domain environment, the domain server (PDC or BDC) must be accessible via the network when a local service first starts during JobCenter setup, or when first connecting to MG/SV as a new domain user using CL/Win. If PDC or BDC is inaccessible, service activation or connection using CL/Win fails due to account authentication failure.
- An account using JobCenter belongs to the local JobCenter group. However, a local user and domain user with the same account name spelling or users in different domains but with the same account name spelling cannot belong to a JobCenter group at the same time (Only one of them can be used.) If a local user and domain user with the same account name spelling belong to a JobCenter group at the same time, JobCenter might not operate normally. (This also applies to the same account name spelling across multiple domains.)
- For a domain environment, there are restrictions on the combinations of nodes that make up a cluster site. You cannot combine a PDC and a member server together or a BDC and a member server together.

- The DNS is required in the domain environment. Set up the hosts file (or the resolv.def file installed on the JobCenter side) so that the name can be resolved even if communication with the DNS server fails and JobCenter can no longer resolve the name, thereby performing proper termination processing.
- If the network that the installation machine joins is operated in the spanning tree, the NIC links up late, making it impossible for JobCenter to confirm the licensed IP address during machine startup, which might cause automatic service startup to fail. In such a case, adjust the startup retry setting according to in <Environment Guide>Section 5.5, "License Check at Startup of JobCenter".
- If any directories used by JobCenter are subject to on-access virus scanning, jobs might not execute successfully. Therefore, exclude directories used by JobCenter from the targets of the on-access scan.
 - Installation directory
 - Cluster database directory (in the case of a cluster environment)
 - %SystemDrive%\Users Directory



You can also narrow down the directories to be excluded from the directories subject to the on-access scan to the following paths for users that are used by JobCenter, rather than the entire %SystemDrive%\Users directory:

%SystemDrive%\Users*<user-name>*\ntuser.*

%SystemDrive%\Users*<user-name>*\AppData\Local\Microsoft\Windows\UsrClass.*

- If a user profile is scanned for viruses at the same time that user profile is loaded during the execution of a JobCenter job, the NQS queue may stop, potentially halting the job execution. After the installation is complete, configure the settings related to the loading of user profiles if necessary. For details, refer to in <Environment Guide>Section 12.3.3, "Specifying job execution settings".



If a user command that is executed from a job requires loading a user profile, some action, such as excluding user profiles from the virus scan target, may need to be taken on the system side.

- To install or operate JobCenter, the Server service and Windows Management Instrumentation service must be operating.

Select [Start] followed by [Run], and then execute [services.msc]. When the [Services] dialog box is displayed, make sure that the statuses of these services are "Started" and [Startup Type] is "Automatic". (These are the default settings.)

- Installing/operating JobCenter requires that in the properties of the network used by JobCenter, [File and Printer Sharing for Microsoft Networks] be set to ON. (By default, it is set to ON.)
- Operation is not guaranteed if an initialization file or registry information in the JobCenter installation directory or Windows directory is changed in a way outside the manual specification range.
- Environment variables temp and tmp

To use JobCenter, the environment variables TEMP and TMP need to be specified and the specified folder needs to actually exist.



If the locations referenced by TEMP and TMP do not exist, the user application commands may not work normally.

The environment variables TEMP and TMP to be specified at the time of job execution vary depending on the JobCenter startup method and job execution settings. The locations referenced by the environment variables TEMP and TMP in different settings are as follows. For details of job execution settings, refer to in <Environment Guide>Section 12.3.3, "Specifying job execution settings".

- When the user environment variables are specified (default)
 - Service startup

Values of the user environment variables TEMP and TMP of the job execution user
(%USERPROFILE%\AppData\Local\Temp)
 - cjcpw startup

Values of the user environment variables TEMP and TMP of the job execution user
(%USERPROFILE%\AppData\Local\Temp)
- When the user environment variables are not specified
 - Service startup

Values of the user environment variables TEMP and TMP of the local system account
(%SystemRoot%\system32\config\systemprofile\AppData\Local\Temp)
 - cjcpw startup

Values of the user environment variables TEMP and TMP of the user who has started JobCenter using cjcpw
(%USERPROFILE%\AppData\Local\Temp)

If creating the above folder poses a challenge, create a folder in any location not related with JobCenter, and then specify the created folder as the value of the environment variables temp and tmp in the environment variable configuration file called the envvars file.

```
Setting example
temp=<actual folder that can be temporarily used>
tmp=<actual folder that can be temporarily used>
```

For details about the envvars file, refer to in <Environment Guide>Section 14.2.3.2, "For setting on JobCenter SV (envvars file)".

■ Notes on CL/Win

- Set the screen resolution to 1024 x 768 or higher. At any lower resolution, some items may not be contained in the screen.

■ Notes on Windows cluster environments

- Set up the JobCenter administrator by using the same user name on all nodes that make up the cluster site. The local administrator permissions for the relevant node are required as described in "General note" in "Windows Version" in this guide.
- If the local site and cluster site are operated at the same time, the JobCenter administrator at the local site serves as the JobCenter administrator at the cluster site. Take this into account before installation.
- In addition to the JobCenter administrator, other users must also have a unique user name and uid on all nodes that make up the cluster site.

Otherwise, the user mapping might not match, making it impossible to continue job execution if a cluster package failover occurs.

To change the uid, use [Environment Setting] in JobCenter. For details on how to change the uid, refer to in <Environment Guide>Section 12.4.1, "Specifying properties of a user".

- For a domain environment, there are restrictions on the combinations of nodes that make up a cluster site.

You cannot combine a PDC and a member server together or a BDC and a member server together.

■ Notes for a UNICODE environment (only Japanese environment)

Note the following when setting up JobCenter in a UNICODE environment:

- Be sure to select non-UNICODE (Non-Unicode Mode) for combinations of an English OS and the English version of JobCenter and a Chinese OS and the Chinese version of JobCenter. Operation is not guaranteed if installation is performed with UNICODE (Unicode Mode) selected.
- Character sets that can be used for input/output

Input values such as job network name, parts name, comment, and unit job script

→ The above values can be entered only within the JIS90-compatible character range.

Unit job standard output, standard error output

→ All the characters defined in JIS2004 can be output (these characters can be displayed by CL/Win).



- Displaying JIS2004 extended characters requires that the font package that can display these characters be installed on the OS.
- The following characters that JobCenter cannot handle are converted to ? when displayed.
 - Characters outside the JIS90-compatible character range
 - JIS2004 extended characters when the font package is not installed on the OS
- Be sure to set up JobCenter in a non-UNICODE environment with the JobCenter language settings when using the SAP ERP Option function. These functions are not usable in a JobCenter instance set up in a UNICODE environment.

In addition, set up the environment variable SAP_CODEPAGE on the machine where JobCenter operates if the destination SAP system is the Unicode version. For details, refer to <Guide for using JobCenterSAP function> (Japanese only).

▪ Character codes output from jobs

Set the character code to be used to output job results to UTF-8 for the UNIX version of JobCenter and UTF-16 for the Windows version of JobCenter. If any other character code is used for output (including a mix of character codes), there is a possibility that the characters will be corrupted.

▪ Logs

Note that the character codes used for the text log output, operation and execution log, and error log of the event previously explained depend on the UNIX version or Windows version.

UNIX version	Depends on character codes during setup
Windows version	Always SJIS


■ Notes on connection compatibility

Depending on the JobCenter MG/SV version and the language selected during the setup, connection compatibility differs as follows.

▪ Connection compatibility between MG and SV

If there is a mix of UNICODE and EUC and/or SJIS environments, all MGs and SVs that use JobCenter must be upgraded to R13.2 or later.

		R12.6.x(MG) or earlier		R12.7(MG) to R13.1.x(MG)			R13.2(MG) or later		
		EUC	SJIS	UNICODE	EUC	SJIS	UNICODE	EUC	SJIS
R12.6.x(SV) or earlier	EUC	✓	✓	-	✓	✓	-	✓	✓
	SJIS	✓	✓	-	✓	✓	-	✓	✓
R12.7(SV) to R13.1.x(SV)	UNICODE	-	-	✓	-	-	✓	-	-
	EUC	✓	✓	-	✓	✓	-	✓	✓
	SJIS	✓	✓	-	✓	✓	-	✓	✓
R13.2(SV) or later	UNICODE	-	-	✓	-	-	✓	✓	✓
	EUC	✓	✓	-	✓	✓	✓	✓	✓
	SJIS	✓	✓	-	✓	✓	✓	✓	✓



Even though both environments use UNICODE, when a unit job request transferred between UNIX and Windows is displayed by specifying "show long queue" in the qmgr subcommand, the path becomes garbled if the job network name or unit job name in the path displayed in the job request in the queue includes Japanese.

▪ Connection compatibility between CL/Win and MG/SV

In principle, connection between CL/Win and MG/SV of different versions is not supported. Different versions of CL/Win can reside on the same PC if they are installed in separate installation folders. Use a different version of CL/Win as appropriate for the version of the server to be connected.

■ Notes on the IPv6 environment

▪ Restrictions on the Windows version

The Windows version does not support an IPv6 address-only environment. IPv4 addresses are always required.



JobCenter requires an environment that supports lookup and reverse lookup of a host name and IPv4/IPv6 address.

- Combinations of CL/Win and MG/SV that can be connected

The following table shows the combinations of the IP address that MG/SV uses when waiting for communication with a remote machine or CL/Win and the IP address that is valid in the machine that uses CL/Win.

		MG/SV		
		IPv4 only	IPv4/IPv6	IPv6 only
CL/Win	IPv4 only	✓	✓	-
	IPv4/IPv6	✓	✓	✓
	IPv6 only	-	✓	✓



For information about how to set the IP address that MG/SV uses when waiting for communication with a remote machine or CL/Win, refer to in <Environment Guide>Section 5.2, "Available Parameters of a Daemon Configuration File".

2.1.2. Setting Up a Network

JobCenter operates on the assumption that a TCP/IP network is correctly set up.

JobCenter determines an IP address from the official host name of the machine, and it cannot operate if the host name obtained from the IP address does not match the official host name. JobCenter even checks whether domains exist and, therefore, sets up a network to achieve an exact match.

Operating JobCenter on multiple machines requires host names and IP address data to be matched among all machines. Care must, therefore, be taken to prevent omission in the host file updates or the like. Therefore, be careful to correctly update the DNS and hosts file.

If multiple network cards are installed with the cluster function not being used, operation is carried out on the network card having the highest priority. In the UNIX environment, for example, JobCenter operates using the host name returned by the hostname command.

For details on setting up a network, refer to in <Environment Guide>Chapter 2, 「Building a Network Environment」 .



In a UNIX environment, if the same host name and IP address are assigned to multiple network cards, they may be installed and initialized in some cases; however, such installation and initialization should be avoided to prevent malfunctions.

In a Windows environment, a specification in the resolv.def file might be required for correct name resolution. For details, refer to in <Environment Guide>Section 2.3, "Resolving Names in Windows".

Note the following when setting up a network:

- Forward lookup/reverse lookup must be available for name resolution of host names.
- A name obtained by forward lookup/reverse lookup must match the official name of the host, not an alias.
- If multiple network cards are installed, a unique host name/IP address must have been assigned to each of them.

- Host name/IP address data must match between hosts linking via JobCenter.
- If a firewall exists between hosts where JobCenter is set up, you need to perform operation to make holes for network ports that JobCenter uses.



If a firewall is enabled in the UNIX environment, firewall exception setting is avoided when JobCenter MG/SV is set up. Therefore, it is required to open the network ports. Especially in the Linux environment, the firewall is enabled by default, and it is required to open the network ports.

- When you set up JobCenter MG/SV in Windows Server 2008 or later, you need to make exception settings for Windows Firewall.

For information on port numbers when making exception settings for Windows Firewall, refer to in <Environment Guide>Section 2.1, "TCP Ports Used by the JobCenter".

- The TCP/IP port number used must not conflict with other services. For details on how to change the port number setting used in JobCenter, refer to in <Environment Guide>Section 2.1, "TCP Ports Used by the JobCenter".



When you connect to MG/SV using CL/Win after completing installation and setup, two machine icons, one showing the host name only and one showing the FQDN, might be displayed for the same machine in the machine list. This is because an alias name only containing the host name is automatically set for the machine recognized by the FQDN during setup or when a machine is added to the machine group.

Alias names can be used to identify machines by their operational role in [Machine List] in the Manager Frame or to improve the user-friendliness of the nmapmgr and qmgrsub commands (Note, however, that alias names are only valid within your own machine (site). They cannot be used for name resolution during communication.)

Alias names can be deleted by using the nmapmgr command (not from CL/Win) if they are not required. Refer to "Delete Name \$alias" in <Command Reference>Section 3.12, "nmapmgr (Managing the Network Configuration)".

2.1.3. Assigning Machine IDs

When installed, JobCenter needs to assign machine IDs that are unique within the system. The valid range for machine IDs is from 1 to 2147483647.

Note the following when assigning machine IDs:

- If JobCenter is used in multiple machines, no machine ID may be duplicated.

For example, when unit jobs are transferred from a UNIX manager machine to multiple Windows server machines, duplication of the machine ID causes unusual operation.

Duplication is not allowed, even between a local site and a cluster site.

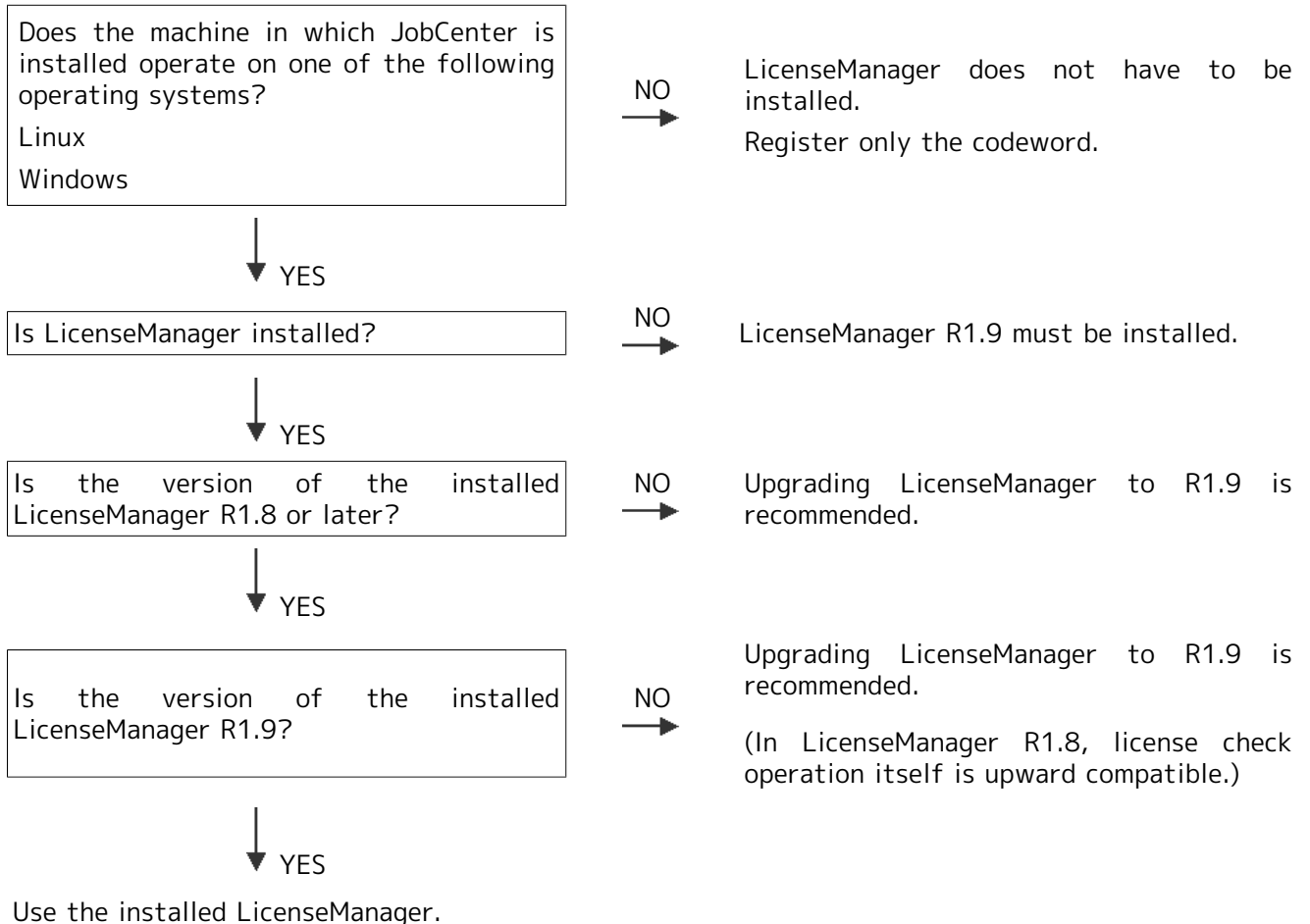
- Each machine holds the machine IDs of different machines. If information on the machine IDs does not match among the machines, unexpected operation may occur.

When the machine ID of a local or cluster site is changed on each machine in the system, the job transfer destination queue might not be recognized or another malfunction might occur if some of the machines are not updated due to incomplete operating rules.

2.2. Installing LicenseManager

LicenseManager is a product for license management. JobCenter uses LicenseManager to perform license checks.

Install LicenseManager before installing JobCenter products. Decide whether this installation is necessary based on the figure below.



For details on how to check whether LicenseManager has been installed and the version, refer to the description for your OS in the next and following sections.



For LicenseManager R1.8, the specifications have been changed and the platform has been expanded as described below. If LicenseManager of a version earlier than R1.8 is installed, be sure to upgrade it to R1.8 or later.

- During a license check, whether the IP address specified when applying for the codeword is valid on the machine is no longer checked.
- Red Hat Linux 7 is supported.

2.2.1. HP-UX (IPF) Version

LicenseManager does not need to be installed.

Register only the codeword to the .lockinfo file, as instructed in [Section 2.3, “Codeword Registration”](#).

2.2.2. Linux Version

1. Required disk and memory capacity

Installing and using LicenseManager requires the fixed disk and memory sizes shown in the table below.

Table 2.1. Fixed disk size and memory size (Linux version)

Fixed disk size	/opt: 1 MB /etc: 1 MB
Memory size	2 MB

2. Installing LicenseManager

To install LicenseManager, follow the steps below.

a. Installing the 32-bit package

Because the package for supporting the compatible architecture is not provided for Red Hat Enterprise Linux 6 or Oracle Linux 6 or later, the i686 architecture version of the package below must be installed.

■ glibc

■ nss-softokn-freebl

You need to install the following package because SUSE Linux Enterprise Server 12 does not have any package supporting the compatible architecture.

■ glibc-32bit

b. Checking LicenseManager

i. Start up the machine and log in with the login name "root".

```
login: root ↵
```

ii. Before installing LicenseManager, check whether LicenseManager has already been installed.

```
root> /bin/rpm -qa NECWSLM ↵
```

■ If the following appears, LicenseManager does not need to be installed.

If LicenseManager R1.9 is already installed:

```
NECWSLM-1.9-1
```

■ If the following line appears, it is recommended that the LicenseManager version be upgraded.

<If LicenseManager R1.8 is already installed>

```
NECWSLM-1.8-1
```

The LicenseManager version can be upgraded by uninstalling the old version and then installing the new one. For the uninstalling procedure, refer to [Section 4.1, “Uninstalling LicenseManager”](#).

- If the text below is displayed, upgrade the version of LicenseManager.

If a version of LicenseManager older than R1.8 is installed:

```
NECWSLM-1.7-1
```



In the above example, 1.7 is shown for the version. If a number smaller than 1.8 is shown, the version is older than R1.8.

To upgrade LicenseManager, uninstall the old version, and then install the new one. For details on how to uninstall LicenseManager, refer to [Section 4.1, "Uninstalling LicenseManager"](#).

- If nothing appears, LicenseManager has not been installed. Proceed with the installation of LicenseManager.

c. Installing LicenseManager

LicenseManager comes bundled with the JobCenter media (DVD-ROM). Follow the steps below to install it.

- Insert and mount the JobCenter media (DVD-ROM). For details on how to mount the DVD-ROM, refer to the Linux product manuals.
- Execute the following command to install LicenseManager.

- For EM64T

```
root> /bin/rpm -i <WSLM_PRODUCT_PATH> ↵
```



<WSLM_PRODUCT_PATH> is the file path for the product. For details about the value to actually enter, refer to the Release Notes (RELMEMO) in the JobCenter media.

- If the message below appears, this indicates that installation has completed normally.

```
***** now installing *****
Installation was successful.
```

If the installation fails due to an rpm error, refer to the installer log file and take action according to the Linux product manual or other documentation.

- Execute the following command to check the installation results.

```
root> /bin/rpm -qa NECWSLM ↵
```

If the message below appears, this indicates that installation has completed normally.

```
NECWSLM-1.9-1
```

2.2.3. AIX Version

LicenseManager need not be installed.

Just register the codeword into the .lockinfo file in accordance with [Section 2.3, "Codeword Registration"](#).

2.2.4. Windows Version (Normal Installation)

1. Required disk and memory capacity

Installing and using LicenseManager requires the fixed disk size and memory size shown in the table below.

Table 2.2. Fixed disk size and memory size (Windows version)

Fixed disk size	2 MB
Memory size	3 MB

2. Installing LicenseManager

To install LicenseManager, follow the steps below.

a. Checking LicenseManager

- i. Start up the machine, and log in as a user who has Administrator permissions.
- ii. Before installing LicenseManager, check whether LicenseManager has already been installed.

In the [Programs and Features] dialog box in Control Panel, check that there is no entry for [WebSAM LicenseManager].

- iii. If LicenseManager already exists, check the version as described below.

In the [Programs and Features] dialog box, choose [Choose Details] from the [View(V)] menu and check the [Version] box. The version information is displayed.

If the version is not 1.8, upgrade the version of LicenseManager. If the version is 1.8, upgrading the software version is recommended.

To upgrade LicenseManager, uninstall the old version, and then install the new one. For details on how to uninstall LicenseManager, refer to [Section 4.1, "Uninstalling LicenseManager"](#).

- iv. If LicenseManager does not exist, proceed with the installation of LicenseManager.

b. Installing LicenseManager

LicenseManager comes bundled with the JobCenter media (DVD-ROM). Follow the steps below to install it.

- i. Copy the package file (setup.exe and lmsetup-x64.msi) to any folder on the local disk from the JobCenter media (DVD-ROM). In this example, copy it to "C:\setup.exe," and "C:\lmsetup-x64.msi".
- ii. Execute the just-copied setup.exe file to start the LicenseManager installer.
- iii. The screen below appears. Click the [Next] button.

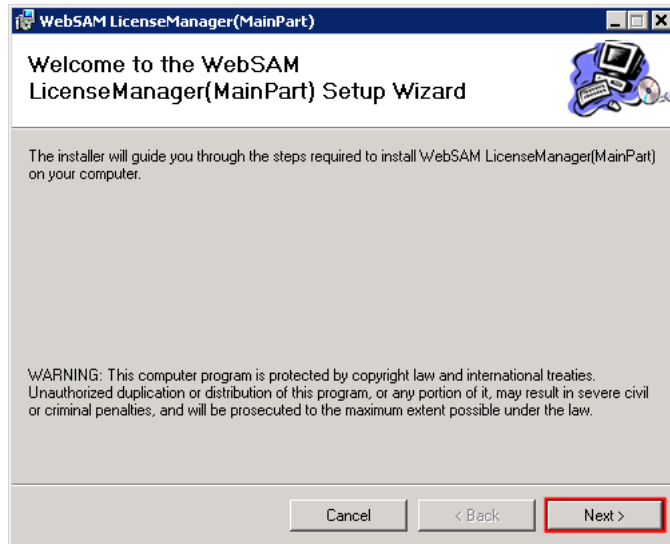


Figure 2.2. Welcome dialog box of the installation wizard

- iv. The "Select Installation Folder" screen appears. Decide the folder to install, and then click the [Next] button.

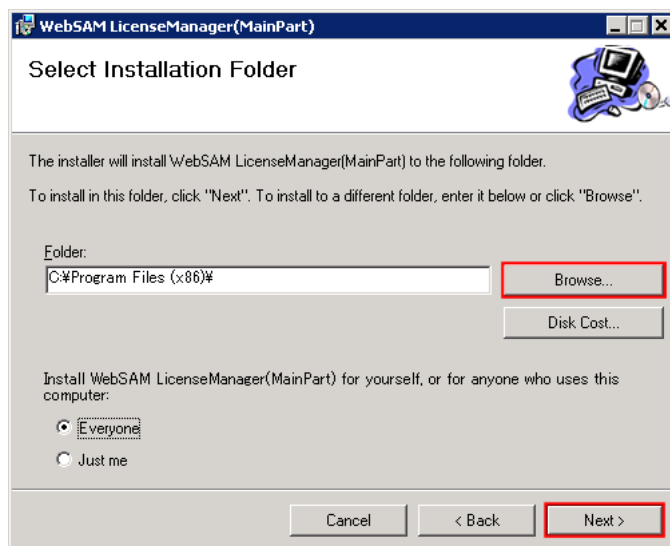



Figure 2.3. Installation folder specification dialog box

 To change the installation folder, click the [Browse] button, select a folder in accordance with the instructions displayed in the dialog box, and then click the [OK] button.

- v. The "Confirm Installation" screen appears. Check the settings that you have made so far. When the settings are completed, click the [Next] button.

To change any of the settings, click the [Back] button to return to the desired screen and make the settings again.

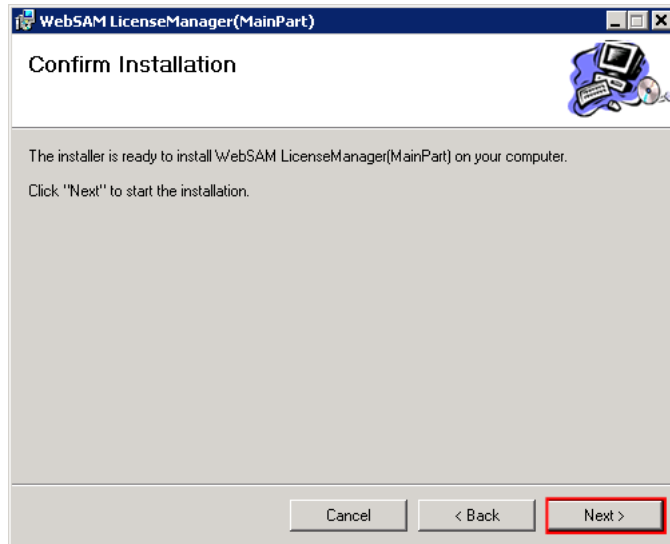


Figure 2.4. Confirmation dialog box

- vi. When all necessary components have been installed, the screen below appears. Click the [Close] button.

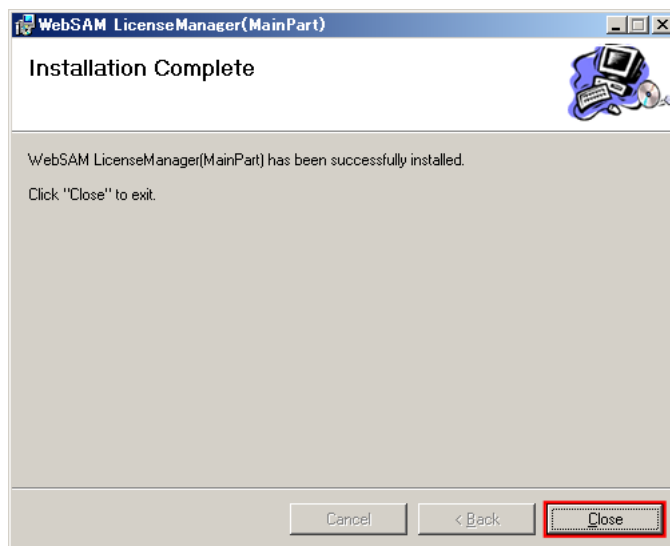



Figure 2.5. Completion dialog box

 If a message asking you to restart is displayed, be sure to restart the system before installing a JobCenter product.

The steps for installing "LicenseManager" are now completed.

Check that installation has completed normally.

- vii. Select [Start] and then [Control Panel] on Windows, and then open the [Add or Remove Programs] (or [Programs and Features]) dialog box.

If an entry of "WebSAM LicenseManager" is displayed as shown below, installation has completed normally.

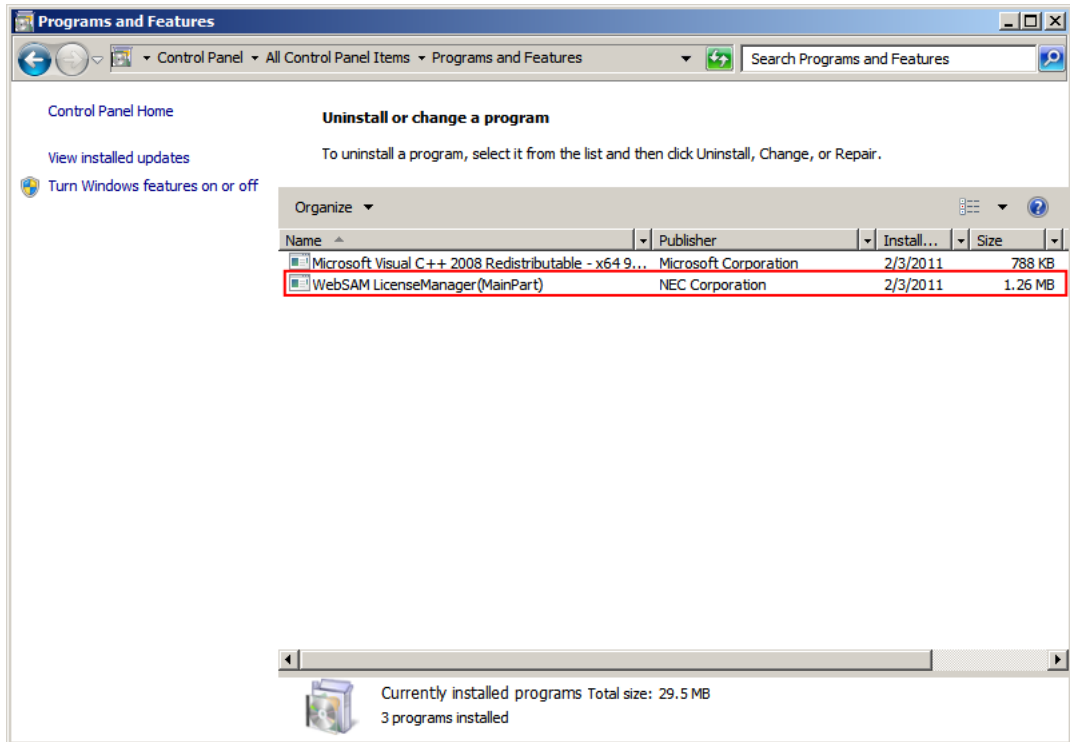


Figure 2.6. Display Example

2.2.5. Windows Version (Silent Installation)

This section describes the silent installation procedure for Windows version LicenseManager. The required disk and memory capacities are identical to those in [Section 2.2.4, "Windows Version \(Normal Installation\)"](#). Refer to this section.

1. LicenseManager silent installation

LicenseManager comes bundled with the JobCenter media. Follow the steps below to install it.



If the old version of LicenseManager has already been installed, the LicenseManager version is upgraded by running the silent installation.

- a. Insert the JobCenter media (DVD-ROM), and then open the command prompt. You can open the command prompt by selecting [Start], [All Programs], and then [Accessories]. For Windows Server 2012 or later, you can open it from the application list that appears by selecting [Start] and then [↓].

When you open the command prompt, select [Run as administrator] from the right-click menu.

- b. Using the following command, copy the package file (setup.bat, setup.exe, and lmsetup-x64.msi) to a single folder on the local disk. In this example, copy it to C:\setup.bat, C:\setup.exe, and C:\lmsetup-x64.msi.

```
C:\> copy "Q:\PACKAGE\LM\WINDOWS\x64" "C:\"
```



In the description below, assume that the CD/DVD-ROM drive is Q.

If your CD/DVD-ROM has another drive name assigned, replace "Q:" as appropriate.

c. Enter the following command to change the current directory .

```
C:\> cd C:\
```



In the description below, assume that package file (setup.bat, setup.exe, Imsetup-x64.msi) is copied to "C:\" from the JobCenter media. If you want to copy it to another destination, replace "C:\" as appropriate.



Be sure to change the current directory to the folder to which the package file (setup.bat, setup.exe, and Imsetup-x64.msi) has been copied.

d. Enter the following command to start the installation.

```
setup.bat [<INSTALL_PATH>]
```



- Specify the installation destination folder for <INSTALL_PATH>. <INSTALL_PATH> may be omitted. If it is omitted, "C:\Program Files" will be used for the installation destination folder.
- The result of installation is output to the Im_install.log log file, which is created under the current directory.

If the installation is completed normally, the message "Result: Succeeded." is displayed.

2.3. Codeword Registration

When you have finished installing LicenseManager, register the codeword for licensing before setting up JobCenter.

2.3.1. Procedure for Registering a Codeword

1. Register a codeword in the file below. Obtain the codeword in advance by applying to the codeword center.

UNIX	/etc/opt/wsnlesd/.lockinfo
Windows	%InstallDirectory%\wsnlesd\etc\opt\wsnlesd\lockinfo



%InstallDirectory% is the directory in which LicenseManager has been installed. By default, it is "\Program Files" in the drive in which the OS is installed.

If using a platform for which installing LicenseManager is unnecessary (HP-UX (IPF) or AIX), the installation of LicenseManager is not required. Register the codeword only. Create the directory and the lockinfo file in the text format on the above path before executing the following step.



In UNIX, create the above subdirectory if it does not exist.

In each .lockinfo file, register a codeword in the format of "<model-number> <codeword>". As shown in the example below, <model-number> and <codeword> must be separated by one or more spaces or tabs.

<Example of registration in the .lockinfo (lockinfo) file>

```
UQ4322-H0C4A1 reYrD4Eyh0Viab9BCPnw0RzmlG76acjKHRV9Vp%Yyr0l
UQ4370-H0C1B1 u4v%daE6VNGKk2VdrS50yQwuoFQCbb0#LSUVDqv4Pi8z
UQ4343-H0C1A1 Ses3s1VedNUShcoJkYR46MjqHDTKpdj#dQXZEvTMVrxz
... ..
```



- Be careful to correctly transcribe 0 (zero) and O (uppercase letter O), 1 (one) and l (lowercase letter l), and other confusing characters when writing the codeword.

- Registration of a codeword applied for using a model number different from that of the purchased product is invalid.



- Without codeword registration, JobCenter provides 60 days trial. If the trial period expires, you cannot restart JobCenter until the codeword is registered.

- The wsnlcheck command can be used to check how many days remain in the trial period. For information about how to use this command, refer to the following.

2. Checking the codeword

Use the command below to check whether the license was unlocked correctly.

- UNIX

```
root> /opt/wsnlesd/bin/wsnlcheck <model-number> <l
```

■ Windows

```
C:\> %InstallDirectory%\wsnlesd\bin\wsncheck <model-number> ↵
```



If LicenseManager is installed under a system-protected folder in Windows, choose [Run as administrator] from the shortcut menu when opening the command prompt and start LicenseManager.

A system-protected folder refers to a folder under "system-drive\Windows", "system-drive\Program Files", or "system-drive\Program files (x86)" (in the case of the 64-bit version).



If the OS is HP-UX (IPF) or AIX, the above check step is not necessary. There is no means to check the accuracy of the codeword because LicenseManager is not installed. There are no problems if JobCenter normally starts and runs.

However, be sure to create the .lockinfo file in the specified location according to the steps in the previous section and correctly make a note of the codeword in case the implementation changes in the future.

The output results as well as their meanings and actions are listed in the table below. (Here, XXXXXX-XXXXXX is the model number.)

Output result	Meaning and action
XXXXXX-XXXXXX "LICENSED" Output example: UQ4321-XOY1Z2 "LICENSED"	The license was correctly unlocked.
No license of XXXXXX-XXXXXX Example: No license of UQ4321-XOY1Z2	There is no license information for the specified model number. This is displayed if the codeword has not been registered and JobCenter is not installed. If this message is displayed after registering the codeword, the codeword was not correctly recognized. Check the following items: <ul style="list-style-type: none"> ■ Is the codeword registered in .lockfile (or lockfile) correct? ■ Does the model number registered in .lockfile (or lockfile) match the one used when applying for the codeword?
XXXXXX-XXXXXX "TRIAL" (until YYYY/MM/DD) Output example: UQ4321-XOY1Z2 "TRIAL" (until 2009/08/31)	The trial period is until YYYY/MM/DD. If this message is displayed after registering the codeword, the codeword was not correctly recognized. Check the following items: <ul style="list-style-type: none"> ■ Are the directory and file name for .lockfile (or lockfile) correct? ■ Is the model number registered in .lockfile (or lockfile) correct?

XXXXXX-XXXXXX "NO LICENSE(TRIAL)" (expired YYYY/MM/DD)	The trial period ended on YYYY/MM/DD.
Output example: UQ4321-XOY1Z2 "NO LICENSE(TRIAL)" (expired 2009/08/31)	



The trial period starts when JobCenter MG/SV is initially installed. If a license check of the codeword for which the trial period is specified is performed before installing JobCenter MG/SV, a message related to the trial period is not output; instead, "No license of XXXXXX-XXXXXX" is output since the trial period is not yet specified.

2.3.2. Messages That May Appear After LicenseManager Is Installed

After LicenseManager has been installed, the messages shown below may appear in syslog (or event log for Windows).

■ For UNIX:

```
<date time host-name> wsnlesd: The license of this <model-number>-* is invalidated on YYYY/MM/DD.
```



"<model-number>-*" indicates what precedes the hyphen ("-") in a product model number such as "UW0312-H2NA00".

In the message, it is displayed as "UW0312-*".

■ For Windows:

```
The license of this <model-number>-* is invalidated on YYYY/MM/DD.
```

The above message indicates that the product "<model-number>-*" is under a trial period, as well as the expiration date.

They are to be output for each model number of JobCenter products without codeword registration, and are not to be output if the codeword for the relevant model number "<model-number>-*" has been registered correctly.

If the above message appears after codeword registration, check whether the model number in the message matches the model number of the codeword registered in the .lockinfo (or lockinfo) file.

■ If the above message appears for a registered model number

The codeword may not have been entered correctly. Check the registration status of the codeword again by using the wsnlesd command in accordance with [Section 2.3.1, "Procedure for Registering a Codeword"](#).

■ If the model number of the registered codeword does not match any "<model-number>-*" of output messages

The above message can be ignored. The license lock has been unlocked by the registered codeword. This message will not appear after the expiration date mentioned in the message. (Note that there is no way to prevent the above warning message indicating expiration from being output.)

A message output example is shown below.

1. The following codeword is registered.

```
UW0312-H2NA00 reYrD4Eyh0Viab9BCPnw0RzmlG76acjKHRV9Vp%Yyr0l
```

2. A message as shown below is output to syslog.

```
Mar 1 15:35:02 shaker wsnlesd: The license of this UQ4321-* is invalidated on 2005/04/30.  
Mar 1 15:35:02 shaker wsnlesd: The license of this UQ4322-* is invalidated on 2005/04/30.
```

3. In this case, the output message is not related to "UW0312-*", and this message can be ignored.

For "UW0312-*", JobCenter will start without any problem because the license lock has been unlocked.

2.4. Installing JobCenter MG/SV

JobCenter MG and SV are common packages. They are referred to as "JobCenter MG/SV" in the remainder of this manual. The installation procedure is described below.



The license system has been changed in R15.1 or later. To execute a job on MG, a license for the job executing server (SV) on MG is not required.

2.4.1. HP-UX Version

The following describes the procedure for installing the HP-UX version of JobCenter MG/SV.

Because the JobCenter media is in the Rock Ridge format, use the mount command as follows to mount the DVD-ROM in HP-UX.

1. Log in as a root user, and then execute the ioscan command to check the device name.

```
root> /usr/sbin/ioscan -fnu -Cdisk ↵
```

2. Insert the JobCenter media (DVD-ROM), and execute the following command.

```
root> /usr/sbin/mount -F cdfs -o rr <device-name> <mount-point> ↵
```



Change the mount point (<mount-point>) and the device name (<device-name>) to fit your system.

3. Execute the following command for installation.

```
root> /usr/sbin/swinstall -s <HP_PRODUCT_PATH> NECJCpkg ↵
```



<HP_PRODUCT_PATH> is the file path for the product. For details about the actually entered value, refer to the Release Notes (RELMEMO) in the JobCenter media.

4. After command execution, the installer displays a message. If no errors occur, the installer displays the following message and completes the installation normally.

```
* Execution succeeded.
```

If the installation fails due to an swinstall error, refer to the installer log file and take action according to the HP-UX product manual or other documentation.

5. If you have finished the above-mentioned steps, proceed to [Chapter 3, 「Setting Up the Execution Environment \(UNIX Version\)」](#).

2.4.2. Linux Version

The following describes the procedure for installing the Linux version of JobCenter MG/SV.

2.4.2.1. Installing the 32-bit Package

Because the package for supporting the compatible architecture is not provided for Red Hat Enterprise Linux 6 or Oracle Linux 6 or later, the i686 architecture version of the package below must be installed.

- Red Hat Enterprise Linux 6 / Oracle Linux 6

- glibc
- nss-softokn-freebl
- ncurses-libs
- pam
- audit-libs
- cracklib
- db4
- libselinux
- libgcc
- libstdc++

■ Red Hat Enterprise Linux 7 / Oracle Linux 7

- glibc
- nss-softokn-freebl
- ncurses-libs
- libgcc
- libstdc++
- pam
- audit-libs
- cracklib
- libdb
- libselinux
- pcre
- xz-libs
- zlib
- libsepol
- libcap-ng

You need to install the following package because SUSE Linux Enterprise Server does not have any package supporting the compatible architecture.

■ SELS 12

- glibc-32bit
- libncurses5-32bit

- libcrack2-32bit
- libselinux1-32bit
- pam-32bit
- libaudit1-32bit
- libopenssl1_0_0-32bit
- libz1-32bit
- libgcc_s1-32bit
- libpcre1-32bit
- libstdc++6-32bit

2.4.2.2. Installing JobCenter

1. Insert and mount the JobCenter media (DVD-ROM). For details on how to mount the DVD-ROM, refer to the Linux product manuals.
2. Execute the following command for installation.

■ For EM64T

```
root> /bin/rpm -i <LINUX_PRODUCT_PATH> ↵
```



<LINUX_PRODUCT_PATH> is the file path for the product. For details about the actually entered value, refer to the Release Notes (RELMEMO) in the JobCenter media.

If error messages are not output after the execution of the command, the installation has been completed.

If the installation fails due to an rpm error, refer to the installer log file and take action according to the Linux product manual or other documentation.

3. If you have finished the above-mentioned steps, proceed to [Chapter 3, 「Setting Up the Execution Environment \(UNIX Version\)」](#).

2.4.3. AIX Version

The following describes the procedure for installing the AIX version of JobCenter MG/SV.



In the AIX environment, it is not automatically checked whether the same product package has been installed, so that any previously installed package may be overwritten.

Be sure to check that another JobCenter MG/SV package has not been installed.

1. Insert and mount the JobCenter media (DVD-ROM). For details on how to mount the DVD-ROM, refer to the AIX product manuals.
2. Use the following command to expand the AIM version package in the media to an appropriate directory.

```
root> cd <directory-to-which-to-expand-the-package>
root> /usr/bin/tar xvf <AIX_PRODUCT_PATH> ↵
```



<AIX_PRODUCT_PATH> is the file path for the product. For details about actually entered value, refer to the Release Notes (RELMEMO) in the JobCenter media.

3. The above command develops the following two files.

```
.toc
NECJCpkg.XXXX.bff
```



Read the above XXXX as the JobCenter version.

4. On the directory decompressed in step 3, execute the following command to install the package.

```
root> /usr/sbin/installp -a -d. NECJCpkg <
```

5. After command execution, the installer displays the following message if no errors occur.

```
NECJCpkg.base XXXX USR APPLY SUCCESS
```

If the installation fails due to an installp error, refer to the installer log file and take action according to the AIX product manual or other documentation.

6. Add the JobCenter termination process to the /etc/rc.shutdown file.

If the /etc/rc.shutdown file does not exist, create the file according to the following instructions.

```
touch /etc/rc.shutdown
chmod 550 /etc/rc.shutdown
chown root:system /etc/rc.shutdown
```

Add the following to the /etc/rc.shutdown file.

```
# Stop JobCenter
if [ -x /usr/lib/nqs/util/rc.nqs ]; then
    /usr/lib/nqs/util/rc.nqs stop > /dev/null 2>&1
fi
```

7. If you have finished the above-mentioned steps, proceed to [Chapter 3, 「Setting Up the Execution Environment \(UNIX Version\)」](#) .

2.4.4. Windows Version (Normal Installation)

Normal installation procedure for Windows JobCenter MG is shown below. For the Windows version, installation and setup are performed by following a flow of sequences.

JobCenter MG and SV are provided in the same package, and adopt the same installation procedure. To install JobCenter SV, follow the installation procedure for JobCenter MG.

Before starting installation, be sure to read the following notes.

■ Notes on the installation environment

The Microsoft Visual C++ 2015 redistributable package is installed automatically at the time of JobCenter (MG/SV) installation, if this package is not installed. Application of Windows update programs KB2919442 and KB2919355 is required for installation of the Microsoft Visual C++ 2015 redistributable package in the OS described below.

- Windows Server 2012 R2

Apply KB2919442 and KB2919355 by referring to the Windows Update or Microsoft release information described below.

<https://support.microsoft.com/en-us/help/2919355/>

■ General note

- Before installation, exit all applications in progress for smooth installation.
- As a user belonging to the local Administrators group, log in to the machine in which JobCenter has been installed.
- To set up JobCenter in the Domain environment, also log in as a user belonging to the Administrators group before performing the operation below.
- To specify a domain user as the JobCenter administrator, log into Windows as a domain user that belongs to the local Administrators group. In this case, a local user with the same account name spelling cannot belong to the JobCenter group.
- The "User Type" ("Local" or "Domain") for setup cannot be selected when JobCenter is installed on the domain controller (PDC/BDC) (The setting is fixed to "Domain".)



%InstallDirectory% represents the installation directory for JobCenter itself. (The default value is "C:\JobCenter\SV".)

■ Note on environment variables

When the environment variable NQS_SITE is set, setup cannot be performed normally. Check whether NQS_SITE is specified (for example, by using a system environment variable) and, if it is, delete it before installation.

■ Notes on permissions

For JobCenter to run correctly, permissions must be granted to the JobCenter administrator and to other JobCenter users.

These permissions can normally be specified by selecting [Administrative Tools] and then [Local Security Policy]. (For a domain environment user, permissions are specified by selecting [Domain Security Policy] for the domain controller and [Domain Controller Security Policy].) Permissions are normally granted without any particular problems, but they might not be granted depending on the security policy for the target system.

Specify settings so that the following permissions are assigned.

1. The permissions required by JobCenter users are as follows (these are normally assigned by the OS by default).

Permissions	Meaning
SeBatchLogonRight	Log on as batch job
SeInteractiveLogonRight	Log on locally



- During the setup of JobCenter, the JobCenter administrator is automatically assigned the two permissions above.
- If the JobCenter administrator is a domain environment user, the policies to be automatically assigned are as follows.

Machine on which JobCenter is set up	Policy
Domain controller	Domain controller security policy
Domain member server	Local security policy

2. In addition to 1., the permissions required by JobCenter administrators are as follows (these are normally assigned by the OS by default).

Permissions	Meaning
SeBackupPrivilege	Back up files and directories
SeChangeNotifyPrivilege	Scan check bypass
SeCreateGlobalPrivilege	Creation of global objects
SeDebugPrivilege	Program debugging
SeIncreaseQuotaPrivilege	Addition of memory quota for process
SeNetworkLogonRight	Access this computer from the network
SeRestorePrivilege	Restoration of files and directories
SeSecurityPrivilege	Management of monitoring and security logs
SeSystemEnvironmentPrivilege	Modification of firmware environment values
SeTakeOwnershipPrivilege	Acquisition of ownership of files and other objects



Note that of the above, SeCreateGlobalPrivilege is not subject to checking by the setting check commands (jc_check and jc_getinfo). However, this permission is required by JobCenter administrators, so be sure to assign it.

3. In addition to 1. and 2., the permissions required by JobCenter administrators are as follows (these are automatically assigned by during JobCenter Setup).

Permissions	Meaning
SeAssignPrimaryTokenPrivilege	Replace a process level token
SeServiceLogonRight	Log on as a service
SeTcbPrivilege	Act as part of the operating system



If the JobCenter administrator is a domain environment user, the policies to be automatically assigned are as follows.

Machine on which JobCenter is set up	Policy
Domain controller	Domain controller security policy
Domain member server	Local security policy

4. Permissions that should preferably be assigned to the Administrators group (assigned by the OS by default)

Permissions	Meaning
SeCreatePagefilePrivilege	Creation of page file
SeIncreaseBasePriorityPrivilege	Raising scheduling priority

SeLoadDriverPrivilege	Loading and unloading device drivers
SeProfileSingleProcessPrivilege	Profile of single process
SeRemoteShutdownPrivilege	Forced shutdown from remote computer
SeShutdownPrivilege	System shutdown
SeSystemProfilePrivilege	Profile of system performance
SeSystemtimePrivilege	Changing system time



The operation of JobCenter itself will not be affected if these permissions are not assigned. However, if a command that launches from a JobCenter job requires the Administrators default permissions, not assigning these permissions might affect the operation of JobCenter. It is therefore recommended to assign these permissions.

For the requirements for the JobCenter user in Windows, refer to "Notes for Windows" in [Section 2.1.1, "Checking Notes in Advance"](#).

■ Notes on the WSFC cluster environment

For an WSFC cluster environment, a special procedure is necessary to uninstall the old version and then install a new one.

For details, refer to <Guide for using Cluster function>.

■ Notes on creating the configuration file for silent installation

To use the configuration file for silent installation created in step 12 on other machines, note the following points:

- On all the machines used, the same password must be used by the JobCenter administrator.
- All the settings other than the password can be changed depending on the machine used. For details, refer to [Section 2.4.5, "Windows Version \(Silent installation\)"](#).

Normal installation procedure is described below.

1. Insert the JobCenter media (DVD-ROM), and then select [Start] followed by [Run]. If the CD/DVD-ROM drive is assigned to a different drive, read the description accordingly.

Specify one of the following file names, and then click the [OK] button. If the CD/DVD-ROM drive is assigned to a drive other than the Q: drive, read the description accordingly.

`Q:\PACKAGE\JB\WINDOWS\MGSV\x64\jcsetup.exe`

2. The JobCenter Setup window is displayed. Click the [Next] button.

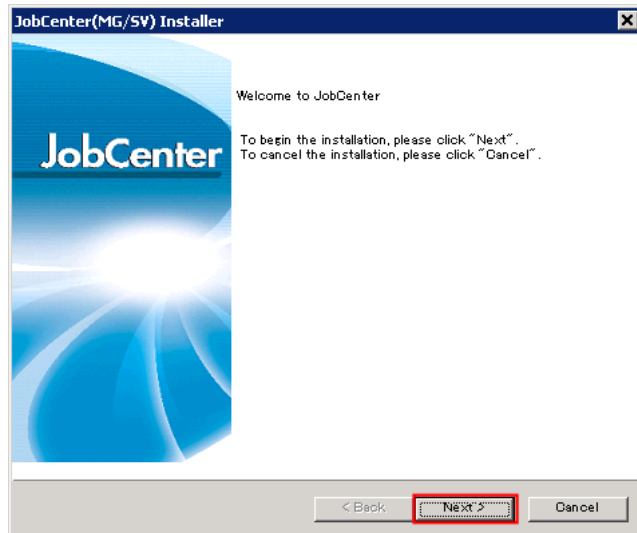


Figure 2.7. JobCenter setup window

3. The configuration file in which the settings specified during the last installation are saved can be loaded. (However, a configuration file saved in another PC cannot be used.)

To load this file, select [Read config file created already], click the [Browse] button, and then specify the file in accordance with the displayed instructions.

If you do not want to load the file, click the [Next] button without selecting the check box.

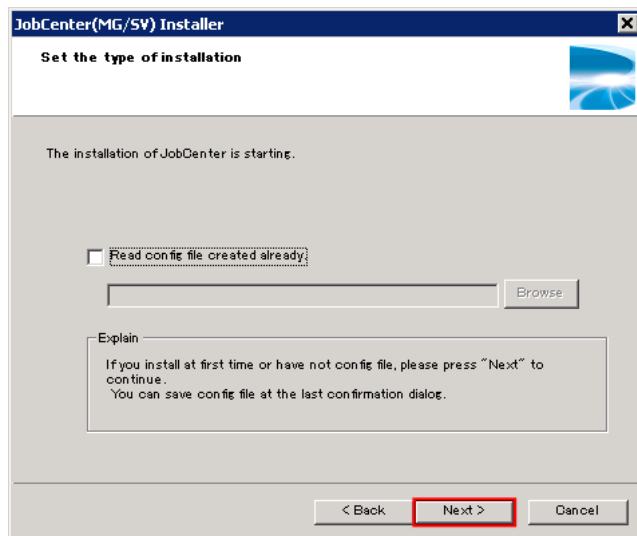



Figure 2.8. Installation type specification dialog box

 This configuration file can be created using [Figure 2.18, "Confirmation dialog box"](#).

4. Next window is displayed, and then click the [Next] button.

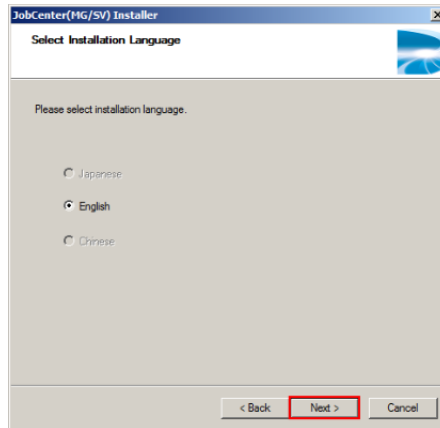


Figure 2.9. Installation language specification dialog box

5. Select the installation folder, and then click the [Next] button.

The default installation folder is "C:\JobCenter\SV".

To change this folder, click the [Browse] button, select a folder in accordance with the instructions displayed in the dialog box, and then click the [OK] button.

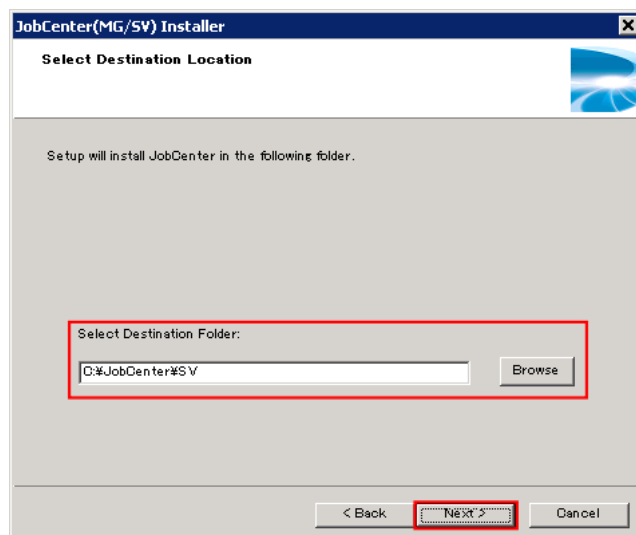


Figure 2.10. Installation folder specification dialog box



Do not use tabs or special characters such as "%", "(", ")", "^", ";", "&", "=", and "," for the name of the installation folder.

Japanese cannot be used to specify installation path.

When you click the [Next] button, the dialog box below might be displayed if you specified a directory containing user-defined information for the old version or if you are reinstalling JobCenter in the same directory it is already installed in.

To inherit the defined information, click the [Yes] button.

To delete the information and then perform the installation, click the [No] button.

To change to a different directory, click the [Cancel] button, and then change the installation directory.

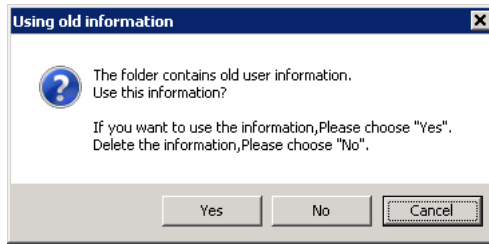


Figure 2.11. Definition information inheritance dialog box

6. Enter the program folder, and then click the [Next] button.

The default folder to which the shortcut links is "JobCenter\SV".

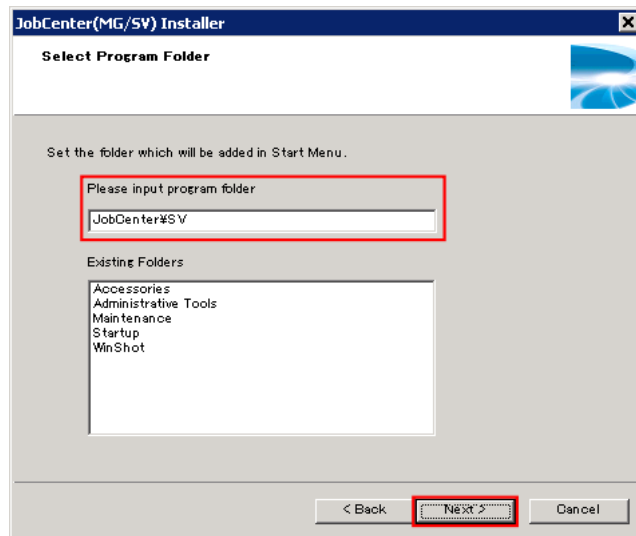



Figure 2.12. Program folder specification dialog box


Japanese cannot be used in the program folder name.

7. Register the administrator used for JobCenter.

Enter the administrator name, administrator password (twice), JobCenter group name, and domain name and then click the [Next] button.

If you enter information about an account that does not exist, the account is created.

If you enter the name of a group that does not exist, the group is created.

If [Domain user] is selected, trusted users from a different domain can also be registered as the administrator.

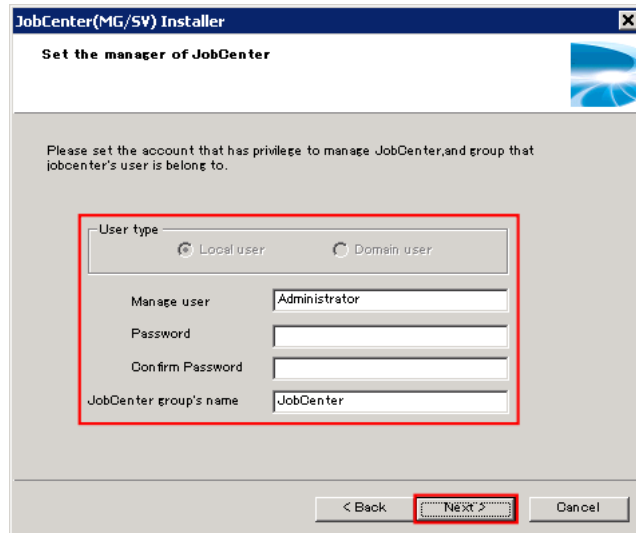


Figure 2.13. JobCenter administrator specification dialog box



- The maximum length for a user name is 15 bytes.
- To make a new user a JobCenter administrator, the user installing JobCenter on a computer (local or domain) requires permissions to add a user to the computer.

If the user does not have these permissions, processing to add a new user during installation cannot be performed, and installation fails.
- Japanese cannot be used in the JobCenter group name.



For installation in a domain environment, you can select whether the JobCenter administrator is to be registered as a local user or domain user.

If the JobCenter administrator is a local user, only local users can use JobCenter.

If the administrator is a domain user, both local users and domain users can use JobCenter.

8. Set the IP address used by JobCenter.

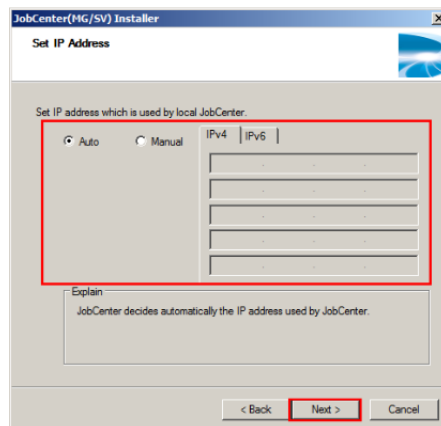


Figure 2.14. IP address specification dialog box

To automatically determine the IP addresses, select [Auto].

If the machine has multiple IP addresses and you want to use a specific one, choose [Manual] and then enter the IP address you want to use. Use the [IPv4] tab to enter an IPv4 address and the [IPv6] tab to enter an IPv6 address. You can specify up to five IPv4 addresses and up to five IPv6 addresses.



- IPv6 addresses cannot be set using [Auto].
- If you choose [Auto] for a machine having multiple IP addresses, the IPv4 address having the highest priority determined by the OS is used.

9. Set the host name and FQDN used by JobCenter.

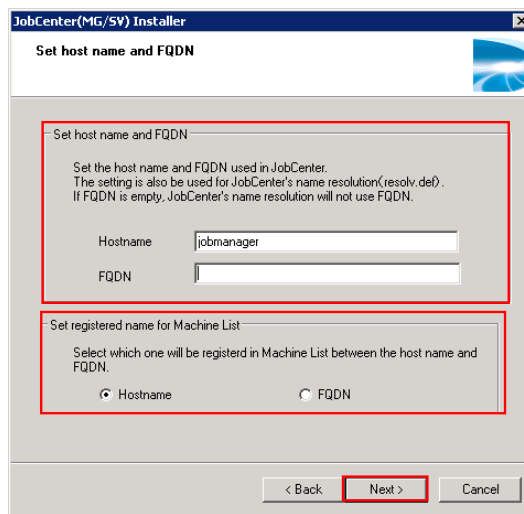


Figure 2.15. Host name/FQDN setting screen

■ Setting the host name and FQDN

Set the host name and FQDN used by JobCenter.

[Host Name] and [FQDN] text boxes are automatically filled in with the name obtained from OS. Manually change them if required.

■ Setting the registration name in the machine list

Select the host name or FQDN for the own machine name to be registered in the machine list.

The machine name specified here will be the name used when specifying the local machine name for the JobCenter settings or commands.



Limitations on the Host Name/FQDN

- [Host Name] must be filled in.
- Spaces, tabs, one-byte Katakana, two-byte characters, and the following characters cannot be used for [Host Name].

! " # \$ % & ' () * , . / : ; = < > ? @ [\] ^ ` { | } ~

- Spaces, tabs, one-byte Katakana, two-byte characters, and the following characters cannot be used for [FQDN].

! " # \$ % & ' () * , / : ; = < > ? @ [\] ^ ` { | } ~

- If [FQDN] is omitted, FQDN is not used for JobCenter name resolution. For details, refer to the following supplementary notes "JobCenter Name Resolution (resolv.def)".
- If [FQDN] is omitted, FQDN cannot be specified for [Setting the registration name in the machine list].
- If the host name or FQDN has not been acquired from OS, the entry column remains blank. In this case, fill it in manually.



JobCenter Name Resolution (resolv.def)

The IP address, host name, and FQDN entered according to [Figure 2.14, "IP address specification dialog box"](#) and [Figure 2.15, "Host name/FQDN setting screen"](#) are registered in the resolv.def (a configuration file) used for the name resolution only of JobCenter. Check the details of resolv.def in <Environment Guide>Section 2.3, "Resolving Names in Windows".

One record consisting of the IPv4 address, host name, and FQDN is specified in resolv.def. If the IPv6 address is entered by [Manual] input, one record of the IPv6 address is also specified. If [Auto] is selected or more than one IP address is entered, the IP address specified in resolv.def is determined according to the following conditions.

- When [Auto] is selected:

IPv4 address: The IPv4 address with the highest priority determined by OS

IPv6 address: Not specified

- When more than one IP address is entered by [Manual] input:

IPv4 address: IPv4 address entered at the top of the [IPv4] tab

IPv6 address: IPv6 address entered at the top of the [IPv6] tab

- When only the IPv6 address is entered by [Manual] input:

IPv4 address: The IPv4 address with the highest priority determined by OS

IPv6 address: IPv6 address entered at the top of the [IPv6] tab

(Example) Contents of resolv.def after specifying 192.168.0.1 (1st) and 192.168.0.2 (2nd) in the [IPv4] tab and 2001:db8:1:2:3:4:5:6 (1st) and 2001:db8:1:2:3:4:5:7 (2nd) in the [IPv6] tab by [Manual] input

```
192.168.0.1 <FQDN> <HOSTNAME>
2001:db8:1:2:3:4:5:6 <FQDN> <HOSTNAME>
```

Use the values entered according to [Figure 2.15, "Host name/FQDN setting screen"](#) for the host name and FQDN. If FQDN is omitted, FQDN is not set in resolv.def.

(Example) Contents of resolv.def after specifying 192.168.0.1 in the [IPv4] tab by [Manual] input and omitting FQDN

192.168.0.1 <HOSTNAME>



When building more than one JobCenter MG/SV, it is necessary to resolve the name similarly in all the machines. The machine specified in resolv.def at installation is the own local site only. Therefore, if the name of the destination machine cannot be resolved by DNS or hosts, it is required to set resolv.def manually.

Check the details of how to set resolv.def, in <Environment Guide>Section 2.3, "Resolving Names in Windows".

- Specify the TCP/IP ports and Windows firewall exception setting used by JobCenter, and then click the [Next] button.

To specify that JobCenter MG/SV use TCP/IP ports other than the default, select the [custom] check box, and then specify the port numbers used by each service.

For details about the default TCP/IP ports, refer to the remark below.

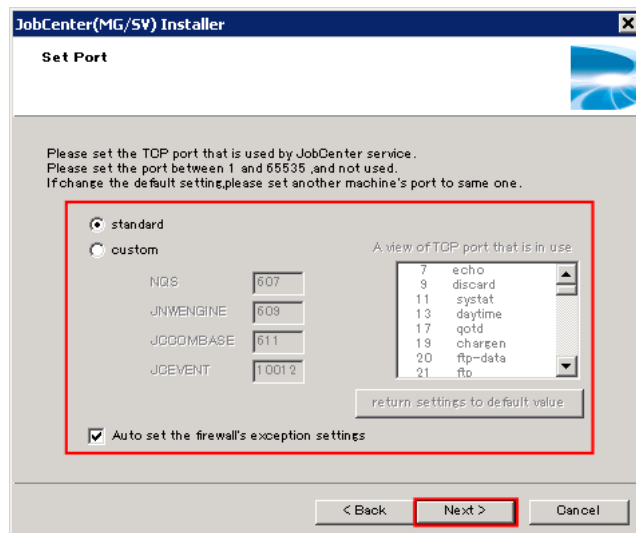


Figure 2.16. Port specification dialog box



The TCP/IP ports below are used by default.

Refer to [A view of TCP port that is in use] on the setting screen to check that there is no settings that conflict with JobCenter.

- NQS:607/tcp
- JNWENGINE: 609/tcp
- JCCOMBASE: 611/tcp
- JNWEVENT: 10012/tcp
- JCDBS: 23131/tcp



Firewall exception settings apply to the properties that are active at installation.

If active properties have changed following installation (for example, if the property is changed from public to domain), reapply the firewall exception settings to the changed properties.

11. Enter an NQS machine ID and select the character encoding method.

The machine ID is used by JobCenter to uniquely identify the computer for each local and cluster site.

Select [Unicode Mode] to use Unicode character encoding or [Non-Unicode Mode] to use different encoding.

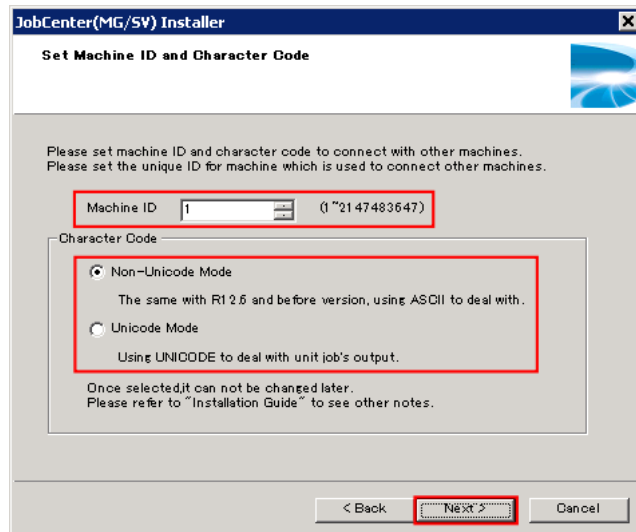


Figure 2.17. Machine ID and character code specification dialog box



■ Avoid duplicating machine IDs between machines in which JobCenter is installed. By default, "1" is set.

■ Once set, the character code cannot be changed later.

For an explanation of notes on using [Unicode Mode], refer to [Section 2.1.1, "Checking Notes in Advance"](#).

12. Check the specified settings, and then click the [Next] button to start installation if there are no problems.

You can save the settings by clicking the [Save] button.

The saved file can be used for a silent installation.

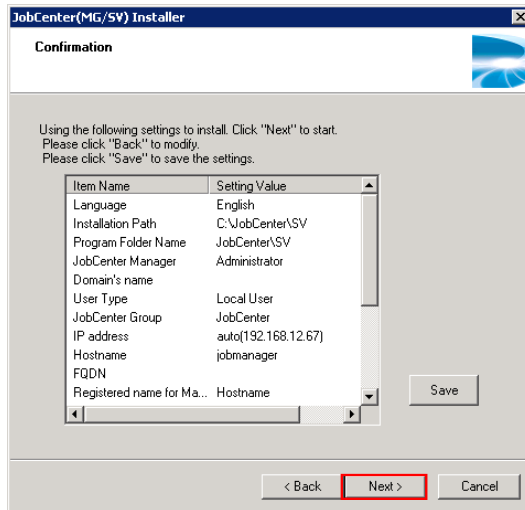


Figure 2.18. Confirmation dialog box

13. When installing JobCenter (MG/SV) is complete, the [Finish] button becomes active.

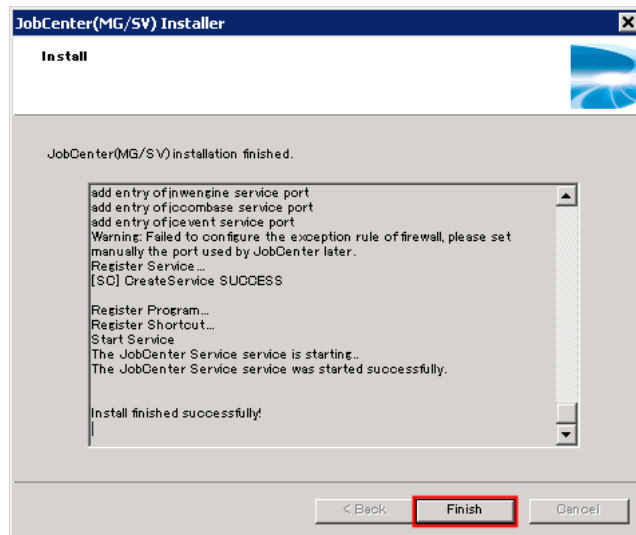


Figure 2.19. Installation execution dialog box



When you install JobCenter (MG/SV), the Microsoft Visual C++ 2015 redistributable package is automatically installed if this package is not included.

It is normal for this installation to take several minutes.

Installing JobCenter (MG/SV) might fail, resulting in the display of "error:3010", during this processing. This is because the system must be restarted to install the distribution package. In such a case, restart the system, and then install JobCenter (MG/SV) again.

When installing in a domain environment, it is also normal for the addition of users to take several minutes.



When the installation finishes, the warning messages below might be displayed. Check the system in accordance with the contents of the warning.

- "The exception setting of the firewall is failed."

Make sure that the Windows firewall is enabled.

To use the firewall, enable it, and then register the port numbers used by JobCenter (specified in [Figure 2.16, "Port specification dialog box"](#)) as exceptions.

- "Failed to set the connect with ESMPRO/ServerAgent."

To link to ESMPRO/ServerAgent, make sure that ServerAgent is correctly installed.

Next, execute the following command:

```
C:\> %InstallDirectory%\setup\amirtreg add ←
```

If not using ESMPRO/ServerAgent, this setting is not required.

14. After installing JobCenter (MG/SV) is complete, execute the information collection command `jc_getinfo` to collect configuration data.

```
C:\> %InstallDirectory%\bin\check\jc_getinfo ←
```



For details about `jc_getinfo`, refer to <Command Reference>.

Use a text editor to open the `right.Info` file, which is in the collected data, and then confirm that the required permissions are assigned to the JobCenter administrator (and that there is no [NG] item).

If there are [NG] items, grant the NG permissions to the administrator.

These permissions can normally be specified by selecting [Administrative Tools] and then [Local Security Policy].

(For a domain environment, permissions are specified by selecting [Domain Security Policy] for the domain controller and [Domain Controller Security Policy].)



If you want to build an environment described below, you need to make additional settings. For details of how to make these settings, refer to in <Environment Guide>Section 5.2, "Available Parameters of a Daemon Configuration File".

- If you want to specify the IP address to be used by JobCenter

This is not necessary when you set an IP address using [Manual].

- If you want to explicitly specify the version of the IP address to be used by JobCenter

2.4.5. Windows Version (Silent installation)

To silently install the Windows version of JobCenter MG, follow the steps below.

The notes on installation are the same as those provided in [Section 2.4.4, "Windows Version \(Normal Installation\)"](#).



In Windows Server 2008 or later, choose [Run as administrator] from the shortcut menu when opening the command prompt and start LicenseManager.

1. Create a silent installation setting file

a. Create a new silent installation setting file

To create this configuration file, enter the configuration details of the machine where silent installation will be performed on an appropriate machine according to [Section 2.4.4, "Windows Version \(Normal Installation\)"](#).

Next, click the [Save] button on [Figure 2.18, "Confirmation dialog box"](#) in step xii to create the configuration file for a silent installation.



- The JobCenter administrator password for the machine in which to run the silent installation must be identical to the JobCenter administrator password that was specified when the setting file was created.
- After the setting file has been created, the JobCenter administrator password in the setting file cannot be changed. For this reason;
 - If you want to use the created silent installation setting file on another machine, the JobCenter administrator password cannot be changed for each machine in which silent installation is to be run.
 - If a change is made to the JobCenter administrator password for a machine in which the setting file was created after another one was created or the machine in which the silent installation is to be run, create the setting file again before silent installation.

b. Edit a silent installation setting file

The setting file is created in the format below. The parameter values vary depending on the settings. Thus, replace them as appropriate.

To change the silent installation settings, change the value of each parameter in a text editor by reference to [Table 2.3, "Configurable parameters in the setting file"](#).

```
"LANGUAGE": "Japanese"
"INSTALL_PATH": "C:\\JobCenter\\SV"
"CLEAN_DATABASE": true
"SHORTCUT_DIR": "JobCenter\\SV"
"ADMIN_USER": "Administrator"
"DOMAIN_NAME": "DOMAIN"
"MGRKEYWORD": "-30:-48:-46:-38:-88:-65:-80:-103:47:1:22:38:23:95:116:67:73:13:39:10:5:5:3:18"
"USE_DOMAIN": true
"JOBCENTER_GROUP": "JobCenter"
"DELETE_LOCALUSER": false
"IPADDRESS": "auto"
"HOSTNAME": "jobmanager"
"FQDN": ""
"REGISTER_IN_MACHINE_LIST": "HOSTNAME"
"NQS_PORT": 607
"JNWENGINE_PORT": 609
"JCCOMBASE_PORT": 611
"JCEVENT_PORT": 10012
"JCDBS_PORT": 23131
"ADDPORFIREWALL": 1
"MACHINE_ID": 1
```

"UNICODE_MODE":0



- If the value is a character string, be sure to enclose it within double quotes (" "). To represent a backslash ("\") in a character string, type two backslashes ("\\").
- If the value is not a character string, type the value without enclosing it within double quotes (" ").
- Do not change any parameter not listed in [Table 2.3, "Configurable parameters in the setting file"](#).
- For notes on setting the parameters, refer to [Table 2.4, "Notes on the setting file parameters"](#).

Table 2.3. Configurable parameters in the setting file

Parameter	Description	Range
LANGUAGE	Set the language to install.	"Japanese", "English", "Chinese"
INSTALL_ PATH	Set the installation destination folder.	256 characters or less Japanese cannot be used Tab characters and the following symbols may not be used: % () ^ ; & = ,
CLEAN_ DATABASE	If you choose the directory that contains the user definition information about the old version or choose the same directory as the one that was used before reinstallation during reinstallation, specify whether to delete the definition information. ■ If true, the definition information is deleted before installation. ■ If false, the definition information is inherited.	true or false
SHORTCUT _DIR	Set the folder that is added to the [All Programs] list in the [Start] menu.	243 characters or less Japanese cannot be used
ADMIN_USER	Set the account that has the JobCenter administrator authority.	15 bytes or less The space, tab characters and the following symbols may not be used: ! " # \$ % & ' () * , . / : ; > = < ? @ [\] ^ ` { } ~
DOMAIN_ NAME	If you specify the domain user for the administrator user that is used in JobCenter, set the domain name.	15 characters or less

		<p>The space, tab characters and the following symbols may not be used:</p> <p>/ \ : * ? " > <</p>
USE_DOMAIN	<p>If you install the products in the domain environment, set the domain or local user for the JobCenter administrator.</p> <ul style="list-style-type: none"> ■ If true, the domain user is used. ■ If false, the local user is used. 	true or false
JOBCENTER_GROUP	<p>Set the group to which the JobCenter user belongs.</p>	<p>20 characters or less</p> <p>Japanese cannot be used</p> <p>The following symbols may not be used:</p> <p>" / \ [] ; ; = , + * ? > < @</p>
DELETE_LOCALUSER	<p>If the JobCenter administrator is specified for the domain user, a local user with the same account name spelling may belong to the JobCenter group. Set whether to delete the local user from the group in this case.</p> <ul style="list-style-type: none"> ■ If true, the local user is deleted from the group. ■ If false, the local user is not deleted from the group. 	true or false
IPADDRESS	<p>Set the IP address that is used for the local JobCenter.</p> <ul style="list-style-type: none"> ■ Up to five IPv4 or IPv6 addresses may be specified. To specify two or more IP addresses, separate the parameters with a comma (",") as follows <pre style="background-color: #f0f0f0; padding: 2px;">"192.0.2.1,198.51.100.1,2001:db8::1234"</pre> <ul style="list-style-type: none"> ■ To enable [Auto], set "auto". 	Set five or fewer IPv4 or IPv6 addresses or "auto".
HOSTNAME	<p>Set the host name used in JobCenter.</p> <p>If this parameter is not set, the host name acquired from OS at the time of a silent installation is used.</p>	<p>256 characters or less</p> <p>Japanese cannot be used</p> <p>The space, tab characters, null characters and the following symbols may not be used:</p> <p>! " # \$ % & ' () * , . / : ; = < > ? @ [\] ^ ` { } ~</p>
FQDN	<p>Set the FQDN used in JobCenter.</p> <p>If this parameter is not set, the FQDN acquired from OS at the time of a silent installation is used.</p>	<p>256 characters or less</p> <p>Japanese cannot be used</p>

		<p>The space, tab characters and the following symbols may not be used:</p> <p>! " # \$ % & ' () * , / : ; = < > ? @ [\] ^ ` { } ~</p>
REGISTER_IN_MACHINE_LIST	<p>Select the host name or FQDN for the own machine name to be registered in the machine list.</p> <p>If this parameter is not set, FQDN is prioritized and selected automatically.</p> <p>If a null character is specified as FQDN, "FQDN" cannot be specified as the value.</p>	"HOSTNAME" or "FQDN"
NQS_PORT	Set the TCP port used by JobCenter server.	1 to 65535
JNWEENGINE_PORT		
JCCOMBASE_PORT		
JCEVENT_PORT		
JCDBS_PORT		
ADDPORFIREWALL	<p>Set whether to perform the Windows firewall exception setting automatically.</p> <ul style="list-style-type: none"> ■ If 0, the exception setting is not performed automatically. ■ If 1, the exception setting is performed automatically. 	0 or 1
MACHINE_ID	Set a machine ID unique to all the linked machines.	1 to 2147483647
UNICODE_MODE	<p>Set the character code system used in JobCenter.</p> <ul style="list-style-type: none"> ■ If 0, non-UNICODE mode ■ If 1, UNICODE mode 	0 or 1

Table 2.4. Notes on the setting file parameters

Parameter	Notes
ADMIN_USER	If a non-existing account name is entered, a new account will be created.
USE_DOMAIN	<p>If the JobCenter administrator is specified as the domain user, both the local and domain users will be available.</p> <p>If the JobCenter administrator is specified as the local user, only the local user will be available in JobCenter.</p>
JOBCENTER_GROUP	If a non-existing group name is entered, a new group will be created.

DELETE_LOCALUSER	If a local and a domain user with the same account name spelling belong to the same JobCenter group at the same time, JobCenter may not operate normally (the same is true of the relationship between domains).
IPADDRESS	All IP addresses to be specified must meet the following conditions.
HOSTNAME	<ul style="list-style-type: none"> ■ The IP addresses are not allocated to the virtual NIC (Microsoft Failover Cluster Virtual Adapter) of WSFC. ■ The IP addresses must be valid in the installation environment. <p>The values specified in IPADDRESS, HOSTNAME, and FQDN are registered in the setting file resolv.def used for name resolution only of JobCenter. Check the details of resolv.def in <Environment Guide>Section 2.3, "Resolving Names in Windows". Also note the following:</p> <ul style="list-style-type: none"> ■ If more than one value is specified in IPADDRESS, the IPv4 address and IPv6 address described on the leftmost side are registered. <p>(Example) Contents of resolv.def after specifying "192.0.2.1,198.51.100.1,2001:db8::1234" in IPADDRESS</p> <pre style="background-color: #f0f0f0; padding: 5px;">192.0.2.1 <FQDN> <hostname> 2001:db8::1234 <FQDN> <hostname></pre> <ul style="list-style-type: none"> ■ If "auto" is specified in IPADDRESS, the IPv4 address acquired from OS at the time of a silent installation is registered in resolv.def. ■ If HOSTNAME is not set, the host name acquired from OS at the time of a silent installation is registered in resolv.def. ■ If FQDN is not set, the FQDN acquired from OS at the time of a silent installation is registered in resolv.def. ■ If a null character is specified in FQDN, FQDN is not registered in resolv.def. <p>(Example) Contents of resolv.def after specifying "192.0.2.1" in IPADDRESS and a null character in FQDN</p> <pre style="background-color: #f0f0f0; padding: 5px;">192.0.2.1 <hostname></pre>
FQDN	
REGISTER_IN_MACHINE_LIST	<p>If this parameter does not exist, FQDN is prioritized and selected automatically.</p> <p>If a null character is specified as FQDN, "FQDN" cannot be specified as the value.</p>
NQS_PORT	When changing the value from a default, use the setting of the same port throughout the linked machines.
JNWEENGINE_PORT	
JCCOMBASE_PORT	
JCEVENT_PORT	
JCDBS_PORT	
ADDPORFIREWALL	The firewall exception setting is set for an active property during installation.

	If an active property is changed after installation (for example, the property is changed from public to domain), make the firewall exception setting for the changed property again.
MACHINE_ID	Make sure that the same machine ID is not used more than once for the machines in which JobCenter has been installed.
UNICODE_MODE	Once the character code system is set, this setting cannot be changed thereafter. For notes on using the UNICODE mode, refer to Section 2.1.1, "Checking Notes in Advance" .

c. Check a silent installation setting file

You can check the setting file format or the range of a parameter value before installation.

You can use the following procedure to check the setting file.

- i. Insert the JobCenter media (DVD-ROM), and then open the command prompt. You can open the command prompt by selecting [Start], [All Programs], and then [Accessories]. For Windows Server 2012 or later, you can open it from the application list that appears by selecting [Start] and then [↓].
- ii. Enter the following command to change the current directory .

```
C:\> Q: ↵
Q:\> cd Q:\PACKAGE\JB\WINDOWS\MGSV\x64\sript ↵
```



In the description below, assume that the CD/DVD-ROM drive is Q.
If your CD/DVD-ROM has another drive name assigned, replace "Q:" as appropriate.

- iii. Enter the following command to start the check.

```
Q:\> install.bat /c <jcsetup.conf> ↵
```

The return values are as follows:

Return value	Description
0	Normal end
1	Abnormal end

If the check ends normally without finding any problem in the setting file, you see the message saying "Check successfully executed".

If the check ends abnormally with an error message displayed, correct the setting file by reference to [Table 2.5, "Error messages on setting file check"](#).



In <jcsetup.conf>, enter the full path of the pre-created setting file.

Table 2.5. Error messages on setting file check

Message	Description
---------	-------------

Invalid line : [<error line >].("key":value)	The line format is invalid. Use the format of "parameter:value".
Invalid key name: [<parameter on the error line>].("key")	Double quotes (") are missing from the parameter or are mismatched.
Invalid value: [<value of the error line>]. (mismatched quote)	The double quotes (") at the value are mismatched.
Invalid LANGUAGE name : [<setting value of LANGUAGE>].(japanese or chinese or english)	The LANGUAGE value is invalid. Specify "Japanese", "English", or "Chinese".
Invalid INSTALL_PATH value : [<setting value of INSTALL_PATH >].(multi-byte is invalid)	The INSTALL_PATH value is invalid. Specify a character string not containing a multibyte character.
Invalid IPADDRESS value : [<setting value of IPADDRESS>].(null or empty string is invalid)	The IPADDRESS value is invalid. Specify an IPv4 or IPv6 address or "auto".
Invalid IPADDRESS value : [<setting value of IPADDRESS>].	
Invalid IPADDRESS value : [<setting value of IPADDRESS>].(5 IPv4 addresses or less)	More than five IPv4 addresses were set. The number of IPv4 addresses specified must be 5 or less.
Invalid IPADDRESS value : [<setting value of IPADDRESS>].(5 IPv6 addresses or less)	More than five IPv6 addresses were set. The number of IPv6 addresses specified must be 5 or less.
Invalid HOSTNAME value: [<setting value of HOSTNAME>].(A null or empty string is invalid.)	A null character cannot be specified in HOSTNAME. Specify the correct host name.
Invalid HOSTNAME value: [<setting value of HOSTNAME>].(Multi-byte is invalid.)	The HOSTNAME value is invalid. Specify the character string that does not contain a multi-byte character.
Invalid FQDN value: [<setting value of FQDN>].(Multi-byte is invalid.)	The FQDN value is invalid. Specify the character string that does not contain a multi-byte character.
Invalid REGISTER_IN_MACHINE_LIST: [<setting value of REGISTER_IN_MACHINE_LIST>].(Must be HOSTNAME or FQDN.)	The REGISTER_IN_MACHINE_LIST value is invalid. Specify HOSTNAME or FQDN.
Invalid REGISTER_IN_MACHINE_LIST: FQDN is NULL, Can't select FQDN be registered in machine list.	If a null character is specified as the FQDN value, "FQDN" cannot be specified as the REGISTER_IN_MACHINE_LIST value. Specify the correct value in FQDN or specify "HOSTNAME" as the REGISTER_IN_MACHINE_LIST value.
Invalid NQS_PORT value : [<setting value of NQS_PORT>].(range:1-65535)	The PORT value is invalid. Specify an integer from 1 to 65535.
Invalid JNWEENGINE_PORT value : [<setting value of JNWEENGINE_PORT>].(range:1-65535)	
Invalid JCCOMBASE_PORT value : [<setting value of JCCOMBASE_PORT>].(range:1-65535)	
Invalid JCEVENT_PORT value : [<setting value of JCEVENT_PORT>].(range:1-65535)	
Invalid JCDBS_PORT value : [<setting value of JCDBS_PORT>].(range:1-65535)	

Invalid MACHINE_ID value : [<setting value of MACHINE_ID>].(range:1-2147483647)	The MACHINE_ID value is invalid. Specify an integer from 1 to 2147483647.
Invalid <parameter> value : [<setting value of parameter>].(string type)	The value of <parameter> is invalid. Specify a character string.
Invalid <parameter> value : [<setting value of parameter>].(0 or 1)	The value of <parameter> is invalid. Specify 0 or 1.
Invalid <parameter>'s value : [<setting value of parameter>].(true or false)	The value of <parameter> is invalid. Specify true or false.
<Parameter>: "<parameter setting value>" is too long!	The character string of <parameter> is too long. Change the character string so that the maximum length of <parameter> is not exceeded.
"<parameter setting value>" contains an invalid character.	"<parameter setting value>" contains a prohibited character. Change the parameter value so that the prohibited character is excluded.

2. Silent installation

- a. Insert the JobCenter media (DVD-ROM), and then open the command prompt. You can open the command prompt by selecting [Start], [All Programs], and then [Accessories]. For Windows Server 2012 or later, you can open it from the application list that appears by selecting [Start] and then [↓].
- b. Enter the following command to change the current directory.

```
C:\> Q: ↵
Q:\> cd Q:\PACKAGE\JB\WINDOWS\MGSV\x64\script ↵
```



In the description below, assume that the CD/DVD-ROM drive is Q.

If your CD/DVD-ROM has another drive name assigned, replace "Q:" as appropriate.

- c. Enter the following command to start the installation.

```
Q:\> install.bat <jcsetup.conf> ↵
```

The return values are as follows:

Return value	Description
0	Normal end
1	Abnormal end

If the installation is completed normally, the message "Install finished successfully!" is displayed.

If the installation results in an abnormal end with an error message displayed, correct the problem according to the error message before retrying the installation. When the installation ends abnormally, refer also to the <TMP directory>/jclog_<YYYYMMDDhhmmss>/setup.log , which contains the output log.



■ In <jcsetup.conf>, enter the full path of the pre-created setting file.

■ Use environment variable "TMP" for <TMP directory>.

- d. After the installation, collect information in the same way as Subsection 14, "Information collection command" in [Section 2.4.4, "Windows Version \(Normal Installation\)"](#) , and check that all the necessary permissions have been assigned to the JobCenter administrator. If not, assign them to the administrator.



If you want to build an environment described below, you need to make additional settings. For details of how to make these settings, refer to in <Environment Guide>Section 5.2, "Available Parameters of a Daemon Configuration File".

- If you want to specify the IP address to be used by JobCenter

This is not necessary when you set an IP address using [Manual].

- If you want to explicitly specify the version of the IP address to be used by JobCenter

2.5. Installing JobCenter CL/Win

JobCenter CL/Win (viewer) is the Windows GUI that connects JobCenter MG (manager) and JobCenter SV (server) together.

Installation and setup are performed by following a flow of sequences.

Different versions of CL/Win (such as R12.7 and R12.8) can be installed by using different installation folders.



■ Although installation of LicenseManager and registration of the code word is not required for installation of CL/Win, you must purchase licenses as many as the number of machines to which CL/Win is installed.

■ Notes on the installation environment

The Microsoft Visual C++ 2015 redistributable package is installed automatically at the time of JobCenter (MG/SV) installation, if this package is not installed. Application of Windows update programs KB2919442 and KB2919355 is required for installation of the Microsoft Visual C++ 2015 redistributable package in the OS described below.

- Windows 8.1
- Windows Server 2012 R2

Apply KB2919442 and KB2919355 by referring to the Windows Update or Microsoft release information described below.

<https://support.microsoft.com/en-us/help/2919355/>

■ In order to facilitate the installation of the runtime libraries, before installing JobCenter CL/Win, be sure to terminate all active applications.

■ When Aero is enabled, screen drawing may be slow.

Refer to Q.12 [CL/Win screen drawing is slow.] in <Environment Guide>Section 20.1, "Troubleshooting Q&A".

2.5.1. Normal Installation



■ Before installation, exit all applications in progress for smooth installation.

■ As a user belonging to the local Administrators group, log in to the machine in which JobCenter has been installed.

To set up JobCenter in the Domain environment, also log in as a user belonging to the Administrators group before performing the operation below.

1. Insert the JobCenter media (DVD-ROM).

Select [Start] followed by [Run] on Windows. Specify the following file name, and then click the [OK] button.

`Q:\PACKAGE\JB\WINDOWS\CLWIN\clsetup.exe`



In the following description, Q: is assumed to be the CD/DVD-ROM drive.
If the CD/DVD-ROM drive is assigned to a different drive, read the description accordingly.

2. The JobCenter Setup window is displayed. Click the [Next] button.

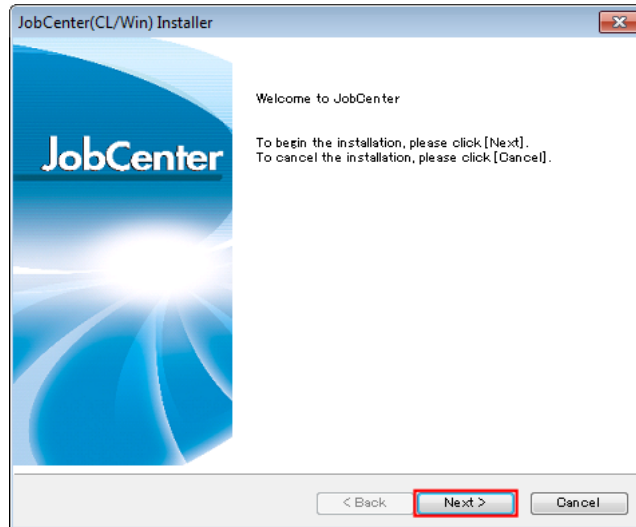


Figure 2.20. JobCenter setup window

3. Select the language used for JobCenter CL/Win (Japanese or English), and then click the [Next] button.

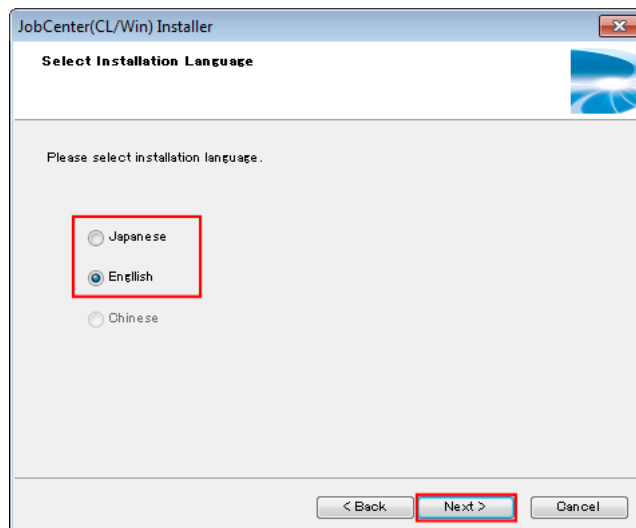


Figure 2.21. Installation language specification dialog box


4. Select the installation folder.

The default installation folder is "C:\JobCenter\CLXX.YY".

To change this folder, click the [Browse] button, select a folder in accordance with the instructions displayed in the dialog box, and then click the [OK] button.

Directly enter the path to create a new folder (such as when installing different versions of CL/Win).

After specifying the installation folder, click the [Next] button.

 XX.YY represents the version number.

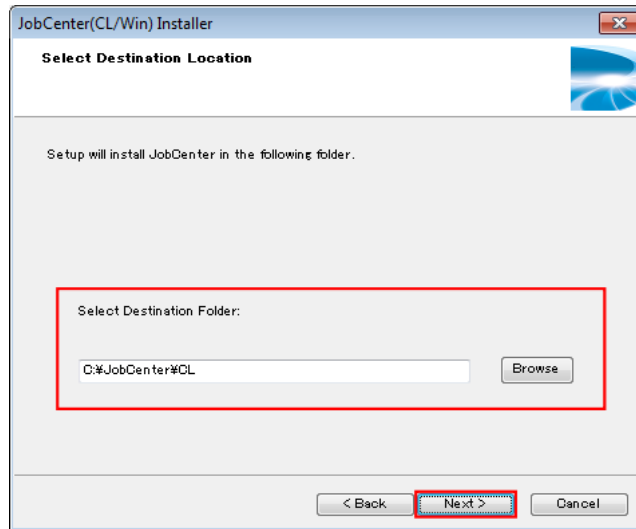



Figure 2.22. Installation folder specification dialog box

 ■ Tabs and special characters such as "%", "(", ")", "^", ";", "&", "=", and "," cannot be used for the installation folder name.

■ When User Account Control is enabled, specify a folder other than a system-protected folder as the installation folder of CL/Win.

A system-protected folder refers to a folder under "system-drive\Windows", "system-drive\Program Files", or "system-drive\Program files (x86)" (in the case of the 64-bit version).


5. Select the folder for storing the JobCenter CL/Win shortcut.

The default value for the folder is "JobCenter\CL XX.YY".

To change this folder, enter the name of any folder under [Select Destination Folder].

Be sure to use different shortcut folders when installing different versions of CL/Win.

After specifying the folder, click the [Next] button.

 XX.YY represents the version number.

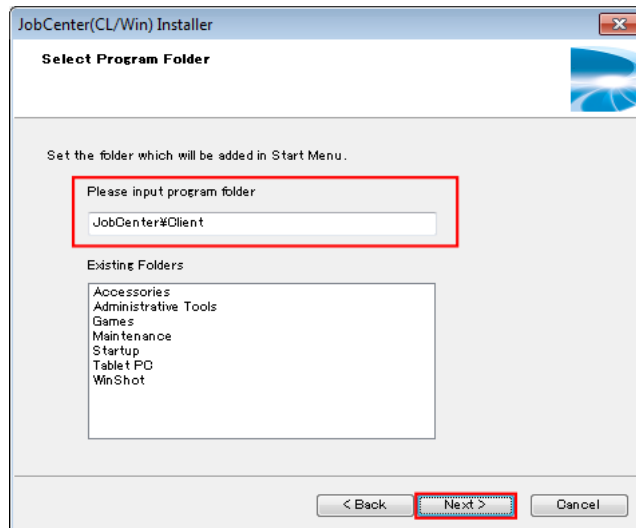


Figure 2.23. Program folder specification dialog box

6. When using JobCenter CL/Win, select one of the following modes, and then click the [Next] button.

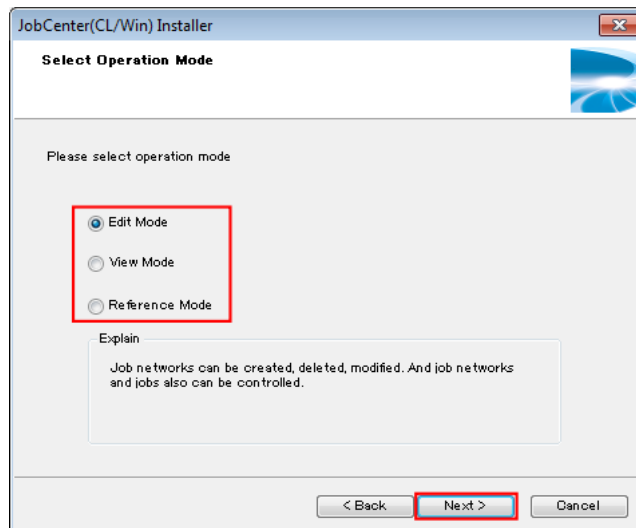


Figure 2.24. Operation mode specification dialog box

Table 2.6. Operation modes and possible operations

Operation mode	Creating, deleting, and changing job networks	Controlling job networks and jobs
Edit Mode	✓	✓
View Mode	-	✓
Reference Mode	-	-

7. Select the shortcut of the window displayed immediately after JobCenter CL/Win is started, and then click the [Next] button.

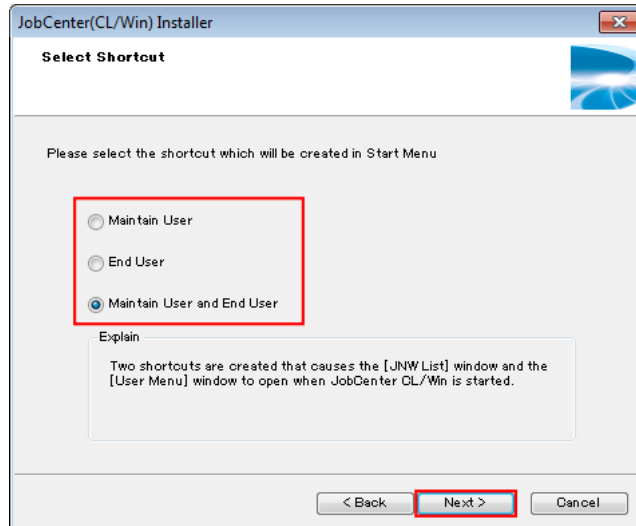


Figure 2.25. Shortcut creation specification dialog box

Table 2.7. Window to use and shortcut to create

Window to use	Shortcut to create
Maintain User (administrator)	A shortcut is created that causes the [JNW List] window to open immediately after JobCenter CL/Win is started.
End User	A shortcut is created that causes the [User Menu] window to open immediately after JobCenter CL/Win is started.
Maintain User and End User	Two shortcuts are created that causes the [JNW List] window and the [User Menu] window to open when JobCenter CL/Win is started.

8. Specify the port (JCCOMBASE) for communicating with JobCenter MG/SV.

If you do not want to change the port used by the server, select [standard] (number 611).

To change the port, select [custom], and then enter the port value.

After specifying the setting, click the [Next] button.

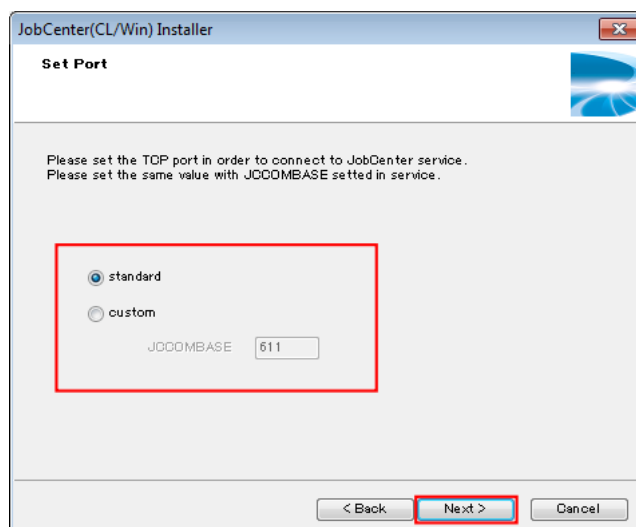


Figure 2.26. Port specification dialog box

- Check the specified settings, and then click the [Next] button to start installation if there are no problems.

Click the [Save] button to save the settings. The saved file can be used for a silent installation.

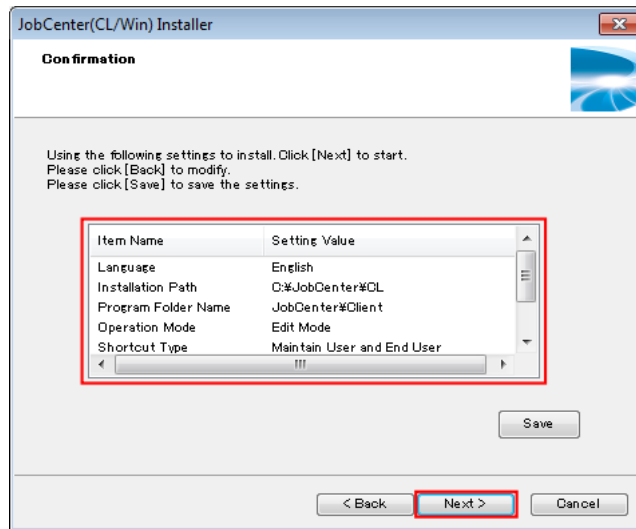


Figure 2.27. Confirmation dialog box

- When installation of JobCenter (CL/Win) is complete, the [Finish] button becomes active. Click this button to complete setup.

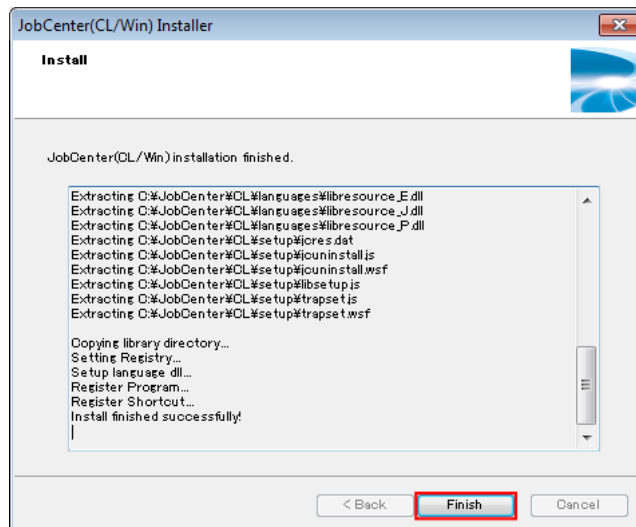


Figure 2.28. Installation completion dialog box



The warning message below may appear when the installation is completed. In this case, you do not need to take any additional action.

"jobcenter.def is not automatically copied. Manually copy this file by referring to the manual if necessary."

2.5.2. Silent Installation

To silently install JobCenter CL/Win, follow the steps below. The notes on installation are the same as those provided in [Section 2.5.1, "Normal Installation"](#).



In Windows Server 2008 or later, choose [Run as administrator] from the shortcut menu when opening the command prompt and perform the installation.

1. Create the configuration file for a silent installation.

To create this file, enter the configuration details of the machine where the silent installation will be performed and click [Save] when performing installation in an appropriate machine, as described in step 12 "Checking the specified setting" in [Section 2.4.4, "Windows Version \(Normal Installation\)"](#).



Do not modify the created configuration file by using an editor or other tool.

When creating a configuration file for multiple machines, set up the installation machine from the GUI and save the configuration file.

2. Insert the JobCenter media (DVD-ROM), and then open a command prompt. You can open the command prompt by selecting [Start], [All Programs], and then [Accessories].
3. Enter the following command to change the current directory:

```
C:\> Q: ␣  
Q:\> cd Q:\PACKAGE\JB\WINDOWS\CLWIN\script ␣
```



In the following description, Q: is assumed to be the CD/DVD-ROM drive.

If the CD/DVD-ROM drive is assigned to a different drive, read the description accordingly.

4. Enter the following command to start installation:

```
Q:\> install.bat <clsetup.conf> ␣
```

When installation finishes successfully, "Install finished successfully" is displayed.



Enter the full path of the previously created configuration file for <clsetup.conf>.

3 Setting Up the Execution Environment (UNIX Version)

Set up the JobCenter execution environment (UNIX version).

For the Windows version, setup is performed in a flow of sequences during installation.



Regarding the firewall, check in advance that the network ports are prepared for JobCenter.

3.1. Setting Up JobCenter (Normal Setup)

3.1.1. Executing nssetup (Setup Command)

Execute the nssetup command with root permissions.

```
root> /opt/netshep/nssetup ←
```



When HP-UX operates in the high reliability mode, and you execute the above nssetup command before adding the JobCenter administrator user (nsumsmgr), who must be set up as described in [Section 3.1.4, "Setting Up the UMS Environment"](#), to the OS, user creation may fail, making it impossible to successfully terminate the nssetup command.

Add the nsumsmgr user by using the useradd command before executing nssetup in an environment in which HP-UX operates in the high reliability mode.

However, execute this command as shown below in Linux.

```
root> /usr/local/netshep/nssetup ←
```

If there is a previous JobCenter spool directory due to an upgrade, etc., the message below appears. (Otherwise, nothing appears.)

```
[Warning] JobCenter spool directory(/usr/spool/nqs) is already exist.
Do you use the old spool directory? [y/n](default: n)
```

To use the existing directory, select y. (The operation is the same as that of R12.6 or earlier.)



For the upgrade procedure, refer to [Chapter 5, 「Version Upgrade」](#) .

If you select n, the existing spool directory is renamed in the format below and a new setup process starts.

```
/usr/spool/nqs_YYYYMMDDhhmmss
```

After the setup is complete, check that the new environment operates normally and then delete the above directory manually.

For information on the contents of the spool directory, refer to in <Release Notes>Section 3.2.3.1, "Spool directory".

3.1.2. Setting the Machine ID of JobCenter

Execution of the nssetup command automatically creates a directory, putting the system in waiting status for entry of the NQS machine ID. (A machine ID is a unique integer in the range from 1 to 2,147,483,647.)

```
Setting NQS machine ID.
INPUT: Machine-id of this machine (default:1)=
```

Here, enter the predetermined NQS machine ID (such as 1234).

```
INPUT: Machine-id of this machine (default:1)= 1234 ←
```



Avoid duplicating machine IDs between machines in which JobCenter is installed. "1" is specified as the ID by default for the nssetup command.



The setup program adds the TCP port entry used by JobCenter to /etc/services at this point. If there are no entries for 607/tcp, 611/tcp, and 10012/tcp, the system shows that port numbers have been added as shown below.

```
Add entry of nqs service port to /etc/services.
Add entry of jccombase service port to /etc/services.
Add entry of jcevent service port to /etc/services.
```

■ If a different application is already using the port to be used by JobCenter, edit /etc/services after setting up to change the port number to an available number, and then restart JobCenter.

Change /etc/services for all the linked JobCenter servers.

In the case of Linux in particular, the jccombase service 611/tcp conflicts with the existing npmp-gui service, so either comment out the npmp-gui service entry or change the number of the jccombase service.

■ When changing the number to which the jccombase service is allocated, change the port number of the following registry key from 611 to another number as required. (Enter the corresponding setup JobCenter version for RXX.YY.)

■ IA-32 environment

Value of HKEY_LOCAL_MACHINE\SOFTWARE\NEC\JobCenter(CL/Win)\RXX.YY\ComBasePort

■ x64 environment

Value of HKEY_LOCAL_MACHINE\SOFTWARE\Wow6432Node\NEC\JobCenter(CL/Win)\RXX.YY\ComBasePort

For details, refer to in <Environment Guide>Section 2.1, "TCP Ports Used by the JobCenter".

3.1.3. Selecting the Language Environment Used by JobCenter

You can select a language for JobCenter to use that is separate from the language set up for the OS. When using this computer to start or set up a GUI or job network, only the character encoding specified here can be used.

```
Select language code for JobCenter.
```

```
0 - English
```

```
1 - EUC
```

```
2 - Shift-JIS (MS-kanji)
```

```
3 - Chinese (GB18030)
```

```
4 - JP.UTF-8
```

```
Which language code do you use in this system ? (0/[1]/2/3/4)
```

If set values for environment variable LANG have been changed in script or LANG initial value of the shell for script execution is incorrect, garbled characters may appear.

(The character code selected by default differs with the value of the environment variable LANG.)

```
Which language code do you use in this system ? (0/[1]/2/3/4) 1 ←
```



- If you use the existing spool directory for the setup, you need to select the same language environment that is set up for the existing spool.
- There are several notes on using JP.UTF-8 (UNICODE environment). Make the necessary settings according to [Section 2.1.1, "Checking Notes in Advance"](#).

3.1.4. Setting Up the UMS Environment

The UMS environment is used to manage the JobCenter system.

In this environment, a message is displayed to ask you whether to automatically create a new nsumsmgr account for the JobCenter administrator. (The user name "nsumsmgr" is fixed and unchangeable.)

However, if the nsumsmgr account already exists, this message is skipped and not displayed.

```
Start NQS daemon.
making UMS environment..
JobCenter needs new user "nsumsmgr".
Do you want to create user "nsumsmgr" automatically ? ([y]/n)
```

- If creating an administrator use

Type y, and then press the [Enter] key to proceed with setup.

The system status is checked and the message shown below is output. (User IDs and other settings differ for each computer.)

```
Create new user "nsumsmgr" as following:
(1)USER ID : 738 (nsumsmgr)
(2)GROUP ID : 1 (other)
(3)HOME DIRECTORY : /home/nsumsmgr
SHELL : /sbin/sh
COMMENT : JobCenter manager
OK? (y/1/2/3/q) :
```

User ID, group ID, home directory, shell, and comment are given in order from above. Of them, three items can be corrected: user ID, group ID, and home directory.

Enter the number placed in parentheses at the place of correction, and then press the [Enter] key to enter correction mode. Proceed to the next step, [Section 3.1.5, "Changing the Administrator User Settings"](#).

After confirming that the current settings are correct, type y, and then press the [Enter] key to proceed to [Section 3.1.6, "Setting a Password"](#).

If, for some reason, you wish to interrupt the work, type q, and then press the [Enter] key.

If you interrupt the work, be sure to create the nsumsmgr account with the OS command, specify the password, and set up the environment with /usr/lib/nqs/gui/bin/mkumsenvsh later as described in "If not automatically setting an administrator user" below.

- If not automatically setting an administrator user

Type n, and then press the [Enter] key. Perform this step if not automatically specifying the administrator user, such as when installing the software in the NIS operation environment, specifying a login shell other than /sbin/sh, or for some other reason.

The installation ends with the following message displayed.

```
You must create new user nsumsmgr manually,  
And execute "/usr/lib/nqs/gui/bin/mkumsenvsh" .
```



If you do not want to specify administrator settings here, be sure to create the nsumsmgr account by using the OS command, specify the password, and execute /usr/lib/nqs/gui/bin/mkumsenvsh after installation.

3.1.5. Changing the Administrator User Settings

■ Changing the user ID

```
OK? (y/1/2/3/q) :1 ↵
```

Type 1, and then press the [Enter] key. The following message is displayed, prompting you to enter the user ID.

```
Set USER ID: 500 ↵
```

Enter the user ID you want to set. The system then checks whether or not the user ID has already been used.

If the user ID has been used, the following message appears, requesting you to enter another user ID.

```
USER ID: 500 is already in use.  
Set USER ID:
```

Entry of a consistent user ID returns to the following screen. (This example changes user ID from 738 to 501.)

```
Create new user "nsumsmgr" as following:  
(1)USER ID : 501 (nsumsmgr)  
(2)GROUP ID : 1 (other)  
(3)HOME DIRECTORY : /home/nsumsmgr  
SHELL : /sbin/sh  
COMMENT : JobCenter manager  
OK? (y/1/2/3/q) :
```

■ Changing the group ID

```
OK? (y/1/2/3/q) :2 ↵
```

On the previous screen (the user ID change completion screen), type 2, and then press the [Enter] key to modify the group ID.

The following screen is displayed first.

```
OK? (y/1/2/3/q) :2  
Possible GROUP ID is following:  
root : 0  
other : 1  
bin : 2  
sys : 3  
.  
.  
Set GROUP ID:
```

Because you can change only the group IDs that currently exist, the system first displays a list of the group IDs currently set up and finally outputs a message requesting you to enter a group ID.

Referring to the list of group IDs, enter a correct ID.

■ Changing the home directory

```
OK? (y/1/2/3/q) :3 ↵
```

On the user ID change completion screen, type 3, and then press the [Enter] key. The following message is displayed, prompting you to enter a directory.

```
Set directory:
```

Enter an appropriate directory. If you enter an existing directory, the following message appears.

```
Directory "/home/nsumsmgr" exists.
OK? (y/[n]) :
```

Type y, and then press the [Enter] key to change to the directory.



- If an existing directory is specified for "(3) HOME DIRECTORY" in "If creating an administrator user", the user ID and group ID of the owner of all the files in the directory and the directory itself are changed to those of the administrator user.
- If, on Linux and AIX machines, you change the home directory, the default home directory may be created. Check the default home directory of the system, and if an unnecessary nsumsmgr directory exists, delete it manually.

3.1.6. Setting a Password

Here, specify the password of the administrator user "nsumsmgr".

```
OK? (y/[n]) :y ↵
```

After changing the nsumsmgr user settings, continue to the password setting by entering "y" as shown above and then pressing the return key.

When the following message appears, enter the new password.

```
Set password of "nsumsmgr"
New password: xxxxxx ↵
```

After the end of entry, a message appears asking you to check the password again. Enter the same password.

```
Re-enter new password: xxxxxx ↵
```



A password must be specified for the JobCenter administrator account to operate the JobCenter system. Do not forget to specify the password.

When password setting is complete, a message appears indicating that the system has finished setting the account for user nsumsmgr.

```
Complete to create new user "nsumsmgr".
Start making ".rhosts".
```

```
Input official host name of UMS machine:
```

3.1.7. Setting Up the .rhosts File

Here, register the host name where the UMS operates in the .rhosts file (the host name of the manager (MG) in this case).

```
Input official host name of UMS machine:
```

The entered name of the host used as the MG must be a formal one. Enter a formal name, not an alias.

If your machine is the MG or you select standalone operation, specify the host name displayed by executing the hostname command on your machine.

For example, entry of hostname.domain.co.jp requests you to check as follows.

```
Host name is "hostname.domain.co.jp". OK? ([y]/n)
```

Type y, and then press the [Enter] key to proceed to the next step. Type n, and then press the [Enter] key to re-enter the host name.

Finally, additional registration of user nsumsmgr in the NetShepherd administrator list finishes setting the administrator user. The setup is complete with the following message displayed.

```
Start adding to qmgr.Complete adding to qmgr
```


3.2. Setting up JobCenter (Silent Setup)

This section describes the silent installation procedure for the JobCenter execution environment.

The notes on the setup are the same as [Section 3.1, “Setting Up JobCenter \(Normal Setup\)”](#) Refer to the appropriate description.



To perform the silent setup, you need to create the JobCenter administrator user (nsumsmgr) before the start.

3.2.1. Creating the Setting File

Create the setting file used for silent setup. Create it in a text editor according to the following format:

```
"CLEAN_DATABASE":Value
"MACHINE_ID":Value
"LANGUAGE_CODE":Value
"MG_HOSTNAME":Value
```



The setting file name may be specified as desired.



- Use the LF for the new line code of the setting file.
- If the same parameter is set on two or more lines, the value on the last setting line will be used.

Table 3.1. Setting file parameters

Parameter	Description	Range	Refer to:
CLEAN_DATABASE	Set how the setup should be performed if the previous spool directory remains due to software amendment such as version upgrade. ■ If true, rename the previous spool directory before performing a new setup. ■ If false, perform the setup using the previous spool directory.	true or false	Section 3.1.1, “Executing nsetup (Setup Command)”
MACHINE_ID	Set the JobCenter machine ID.	1 to 2147483647	Section 3.1.2, “Setting the Machine ID of JobCenter”
LANGUAGE_CODE	Set the language used in JobCenter. ■ 0 - English ■ 1 - EUC ■ 2 - Shift-JIS (MS-kanji) ■ 3 - Chinese (GB18030)	0 to 4	Section 3.1.3, “Selecting the Language Environment Used by JobCenter”

	■4 - JP.UTF-8		
MG_HOSTNAME	Set the host name of the manager (MG) set in the .rhosts file of the JobCenter administrator user (nsumsmgr).	255 characters or less	Section 3.1.7, "Setting Up the .rhosts File"

The following is an example of setting a file.

```
"CLEAN_DATABASE":true
"MACHINE_ID":1
"LANGUAGE_CODE":4
"MG_HOSTNAME":"hostname.domain.co.jp"
```

3.2.2. Checking the Setting File

You can check whether the setting file has been created in the proper format before setup.

Execute one of the following commands as the root user:

■For Linux

```
root> /usr/local/netshep/nssetup -c setting_file
```

■For OS other than Linux

```
root> /opt/netshep/nssetup -c setting_file
```

Display of the following message indicates that the setting file has been created in the proper format .

```
check configuration file successfully.
```

If an error message appears, correct the setting file by reference to the description of [Section 3.2.4, "Error Messages"](#).



■This function checks only the setting file format and the range of the setting values. Note that it does not perform the machine ID duplication check or the consistency check for the MG_HOSTNAME host name.

■This function does not perform the existence check for the JobCenter administrator user (nsumsmgr). Create it before silent setup.

3.2.3. Silent Setup

Execute one of the following commands as the root user.

■For Linux

```
root> /usr/local/netshep/nssetup setting_file
```

■For OS other thanLinux

```
root> /opt/netshep/nssetup setting_file
```

The return values are as follows:

Return value	Description
0	Normal end

1	Abnormal end
---	--------------

If the return value is 0, the setup has been completed normally. After completion, JobCenter starts automatically.

If the return value is 1, the setup has failed. Correct the problem according to the error message before retrying the setup.

3.2.4. Error Messages

Table shown below lists the main silent setup error messages.

Table 3.2. Silent setup error messages

Message	Description
Only root user can execute this command.	Execute the command as the root user.
JobCenter is running! Stop JobCenter by '/usr/lib/nqs/nqsstop' command.	JobCenter is active. Stop JobCenter with the nqsstop command before executing the command.
ERROR: Failed to open configuration file.	Loading the setting file results in failure.
WARNING: Invalid format : [< contents of line >]. (format : ["PARAMETER":VALUE])	The format of the setting file is invalid.
WARNING: Invalid parameter : [< parameter >].	An invalid parameter is set in the setting file.
ERROR: Required parameter not exist : [<parameter>]	The <parameter > is not set in the setting file.
ERROR: Invalid CLEAN_DATABASE value : [<value>]. (true or false)	The CLEAN_DATABASE value is invalid. Specify true or false.
ERROR: Invalid MACHINE_ID value : [<value>]. (range: 1-2147483647)	The MACHINE_ID value is invalid. Specify an integer from 1 to 2147483647.
ERROR: Invalid LANGUAGE_CODE value : [<value>]. (range: 0-4)	The LANGUAGE_CODE value is invalid. Specify an integer from 0 to 4.
ERROR: Invalid MG_HOSTNAME value. (255 characters or less)	The MG_HOSTNAME value is invalid. Specify a character string of 255 characters or less.
ERROR: JobCenter manager user not found. Please create a user "nsumsmgr".	The JobCenter administrator user (nsumsmgr) was not found. Create the JobCenter administrator user (nsumsmgr) before executing the command.

3.3. Work Necessary After JobCenter Setup

■ Work necessary when setting up the cluster site

After `nssetup` is executed, the local site is opened and the process resides on it. To set up the cluster site (by using `cjcmksite`), stop the local site, and then specify the `local_daemon` parameter in `daemon.conf` so that the local site is opened in the "site mode".

For details, refer to in <Guide for using Cluster function>Section 2.3.4, "Stopping JobCenter (Active and Standby Servers)" and in <Guide for using Cluster function>Section 2.3.6, "Building the Site (Active and Standby Servers)".

■ Specifying the environment variable, TZ

Specify the environment variable `TZ` after setting up the Linux or AIX version of JobCenter. For details, refer to in <Environment Guide>Section 14.1.5, "Notes on the Environment Variable `TZ` (Linux and AIX Versions)".

■ Work necessary for using JobCenter in a time zone different from Japan

When using JobCenter in a time zone different from Japan or using the multi time zone function added as of R12.8.2, make additional settings referring to in <Environment Guide>Chapter 15, 「Usage in a Non-Japanese Time Zone」 .

■ Tuning the OS kernel parameters and shell limits

When generating and executing a large number of job requests in JobCenter in a short period of time, the upper limit values of various OS kernel parameters or shell limits might be exceeded. (For example, `fs.file-max`, `kernel.threads-max` and `nproc` in Linux.)

When intensively executing job requests, adjust the kernel parameters or shell limits of the consumed resources, referring to the resource usage described in <Environment Guide>Chapter 19, 「System Usage Resources」 .

3.4. Setting Up the IPv6 Environment

By default, IPv4 addresses are given precedence as the IP addresses used by MG/SV. Therefore, additional settings need to be made for the following environments:

- When IPv6 addresses are used in the IPv4/IPv6 dual stack environment
- When the machine has multiple IP addresses and specific IP addresses are used

For information about the setting, refer to in <Environment Guide>Section 5.2, "Available Parameters of a Daemon Configuration File".

4 Uninstallation

This chapter describes how to uninstall LicenseManager, JobCenter MG/SV, and JobCenter CL/Win.

4.1. Uninstalling LicenseManager

4.1.1. UNIX Version

If any products are dependent on LicenseManager, remove them first.

Because JobCenter is also dependent on LicenseManager, it must be uninstalled before LicenseManager.



If you uninstall LicenseManager before removing the products that are dependent on it, the operation of those products might be affected.

Log in with the login name "root".

```
login:root ↵
```

4.1.1.1. Linux Version

1. Execute the following command to remove this package.

```
root> /bin/rpm -e NECWSLM ↵
```

2. If the following message appears, this package has been removed normally.

```
*****now removing *****  
Uninstallation was successful.
```

4.1.2. Windows Version

If any products are dependent on LicenseManager, remove them first.

Because JobCenter is also dependent on LicenseManager, it must be uninstalled before LicenseManager.



If LicenseManager is uninstalled without deleting the dependent packages, the operation of the dependent products might be affected. Therefore, make sure that such packages have been deleted before uninstallation.

Follow the procedure below to remove a WebSAM LicenseManager(MainPart) product.

1. Start up the machine, and log in as a user who has Administrator permissions.
2. Select [Start] and then [Control Panel] on Windows, and then execute [Add or Remove Programs] (or [Programs and Features]) to display the screen below. Click the [Remove] (or [Uninstall]) button.

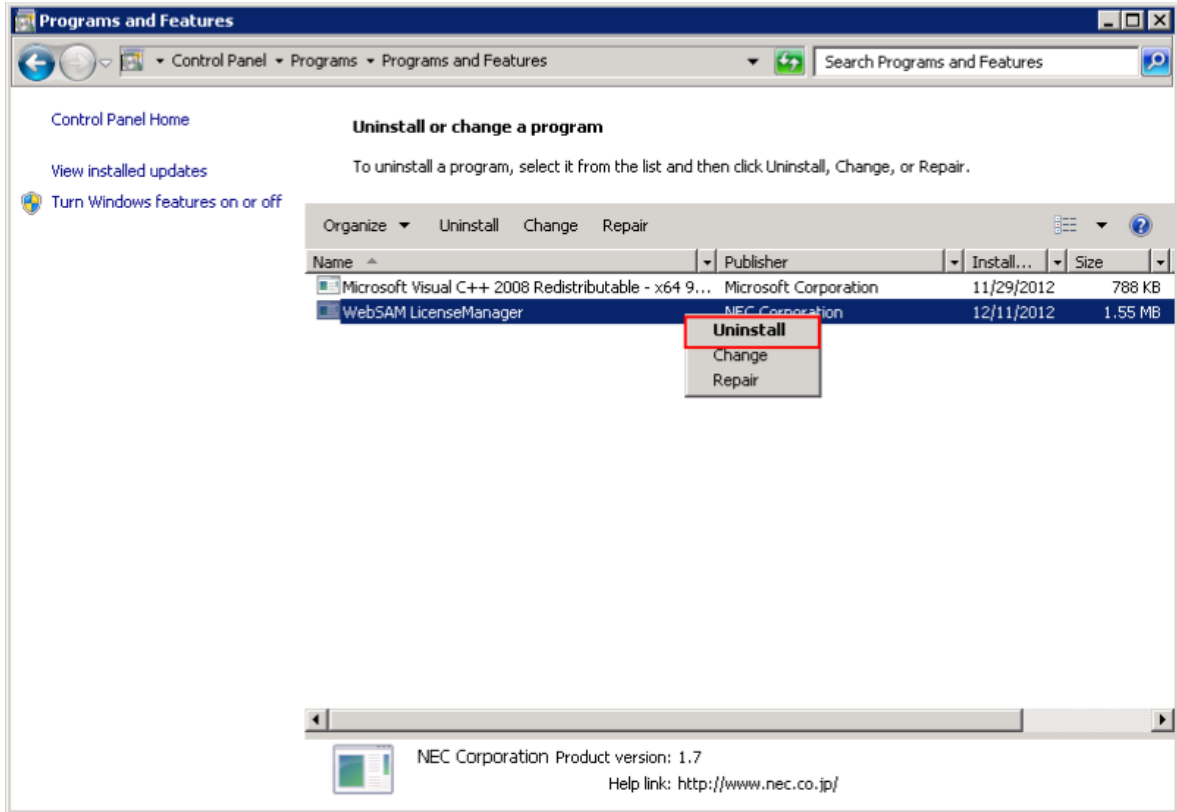


Figure 4.1. Package deletion dialog box

3. The dialog box below appears. Click the [Yes] button to remove the application.

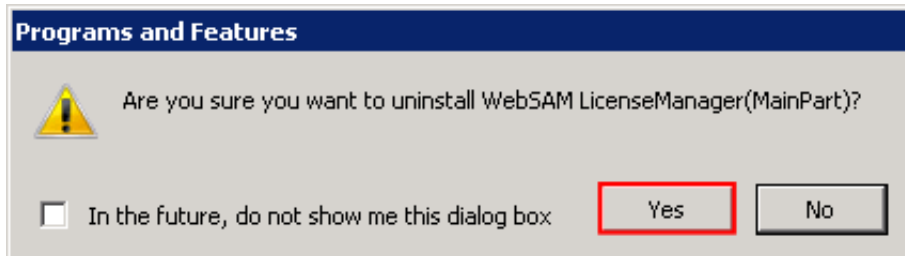


Figure 4.2. Package deletion confirmation dialog box

4. The [Add or Remove Programs] (or [Programs and Features]) window is displayed again. If the [WebSAM LicenseManager] entry is gone, the application has been deleted.

4.2. Uninstalling JobCenter MG and JobCenter SV

4.2.1. UNIX Version

4.2.1.1. Uninstalling the Packages

According to [Table 4.1, “Package names required to be removed and remove commands for the packages for each OS”](#), remove the packages of the old version of JobCenter.

For each OS, the packages to remove differ depending on the JobCenter type (MG or SV). Check the name of the packages that are actually installed before starting removal.

For details how to check the names of the package, refer to [Section 6.1, “UNIX Version”](#).

Table 4.1. Package names required to be removed and remove commands for the packages for each OS

OS	Package name (12.6.x or earlier)	Package name (12.7 or later)	Remove command for package
HP-UX	NECSSJBmg (MG) NECSSJBag (SV) NECSSJBpt (accumulated patch)	NECJCpkg (common to MG/SV) NECJCpt (accumulated patch)	swremove <pkgrname>
AIX	NECSSJBag (common to MG/SV) NECSSJBpt (accumulated patch)	NECJCpkg (common to MG/SV) NECJCpt (accumulated patch)	installp -u <pkgrname>
Linux	NECSSJBag (common to MG/SV) NECSSJBpt (accumulated patch)	NECJCpkg (common to MG/SV) NECJCpt (accumulated patch)	rpm -e <pkgrname>



- The accumulated patch package depends on the package of MG/SV itself. Therefore, when deleting a package from a system to which an accumulated patch has been applied, delete the accumulated patch package before the package of MG/SV itself.
- In HP-UX versions before R12.7, both the MG and SV packages are installed on the MG machine. In this case, uninstall the MG package first because the MG package depends on the SV package.

4.2.1.2. Deleting Spool Area Data (Local Site)

The data in the spool area is not deleted just by uninstalling the package. This area contains all the data configured or set after the setup of JobCenter, including NQS-related data such as machine and queue settings, in addition to job network definitions and schedules, trackers, and other user data. To delete these types of data, delete the following directory:

```
/usr/spool/nqs
```

4.2.1.3. Deleting Cluster-Related Data

When deleting cluster-related data, delete the directory and symbolic link file below.

<cluster-database-path>/nqs
/usr/spool/nqs/<IP-address>



<IP-address> should be replaced by one of the items described below, depending on the IP address corresponding to the name of the cluster site where JobCenter is running.

IP address version	Content of <IP-address>
IPv4	Character string representing the IP address in hexadecimal notation
IPv6	IPv6 address excluding ":" (in hexadecimal notation)

Note that, when a cluster-related database is deleted, all user-related data in the database is also deleted.

4.2.1.4. Deleting the JobCenter Termination Process from the /etc/rc.shutdown File (Only for AIX)

If the operating system is AIX, delete the JobCenter termination process that was added to the /etc/rc.shutdown file during installation.

4.2.2. Windows Version

To perform the operations below, first log in as a user who has Administrator permissions.



%InstallDirectory% represents the installation directory for JobCenter itself. (The default value is C:\JobCenter\SV.)

4.2.2.1. Uninstalling the Packages

Choose [Start], [Control Panel], and then [Programs and Features]. In the resulting dialog box, choose JobCenter(MG/SV) RXX.YY and click [Uninstall/Change].



XX.YY is the version number.

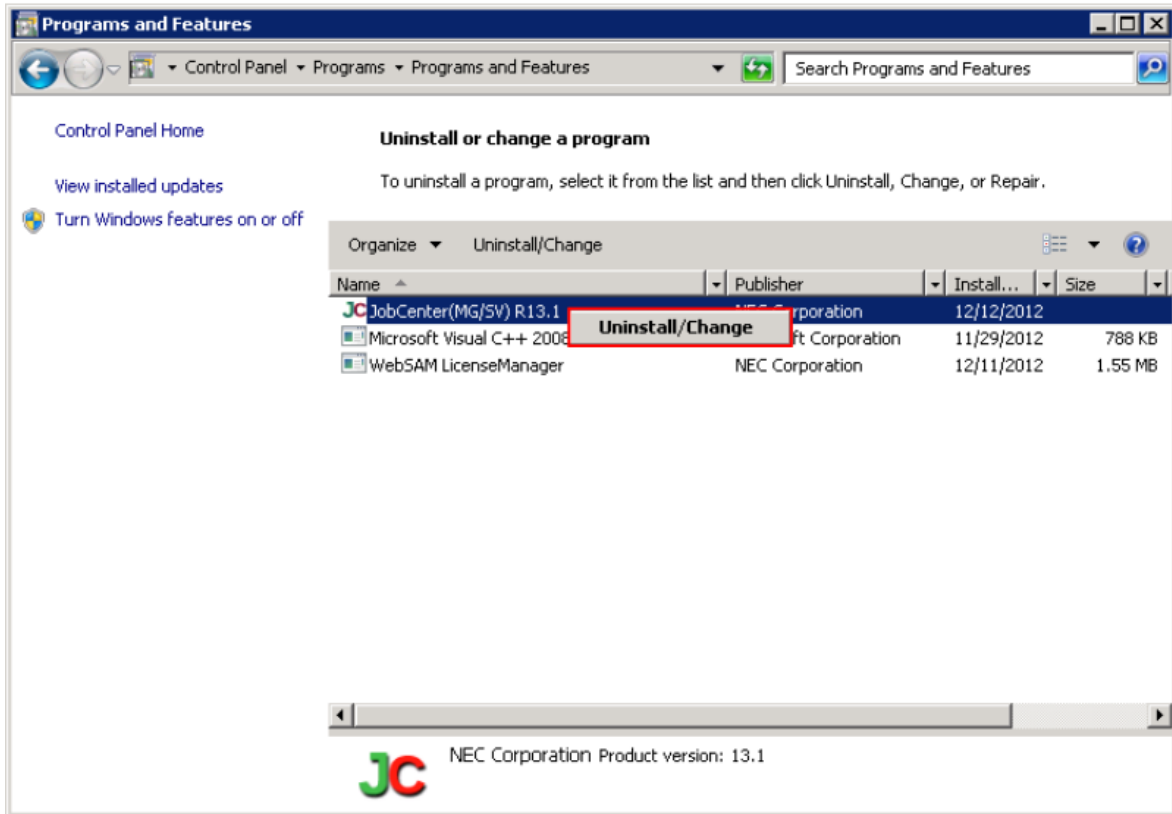


Figure 4.3. Package deletion dialog box

4.2.2.2. Deleting Spool Area Data (Local Site)

This area contains all the data configured or set after the setup of JobCenter, including NQS-related data such as machine and queue settings, in addition to job network definitions and schedules, trackers, and other user data. To delete these types of data, delete the following directory:

%InstallDirectory%



By default, %InstallDirectory% is set to "C:\JobCenter\SV".

4.2.2.3. Deleting Cluster-Related Data

When deleting cluster-related data, delete the whole cluster database directory.



Note that, when a cluster-related database is deleted, all user-related data in the database is also deleted.

4.2.2.4. Deleting Registry-Related Data

To delete registry-related data, follow the steps below.

1. Select [Start] followed by [Run] on Windows. In the Run window, enter "regedit" and then click the [OK] button. The [Registry Editor] dialog box appears.
2. In the left pane of the [Registry Editor] dialog box, right-click the following key and then select [Delete] from the shortcut menu.

HKEY_LOCAL_MACHINE\SOFTWARE\NEC\NetShepherd/SV

4.2.2.5. Deleting the Setting of an Environment Variable

If you have used JobCenter in a cluster environment, check whether the environment variable NQS_SITE is set. If NQS_SITE is set, remove it.



■ The message "Uninstall finished. Please reboot OS to complete uninstallation." might appear and bin and lib might not be deleted from %InstallDirectory% if, for example, a file was being used while uninstalling JobCenter. In such a case, restart the OS, and then delete them by using Explorer or another application.

4.2.2.6. Deleting the Dependent Package

The Microsoft Visual C++ redistributable package remains undeleted even after you uninstall JobCenter. If this package is not necessary, delete the package having the name shown below, by using "Programs and Features".

Microsoft Visual C++ 2015 Redistributable (x64) - 14.0.24215

4.3. Uninstalling JobCenter CL/Win

4.3.1. Uninstalling the Packages

To perform the operations below, first log in as a user who has Administrator permissions.

Choose [Start], [Control Panel], and then [Programs and Features]. In the resulting dialog box, choose JobCenter(CL/Win) and click [Uninstall/Change].

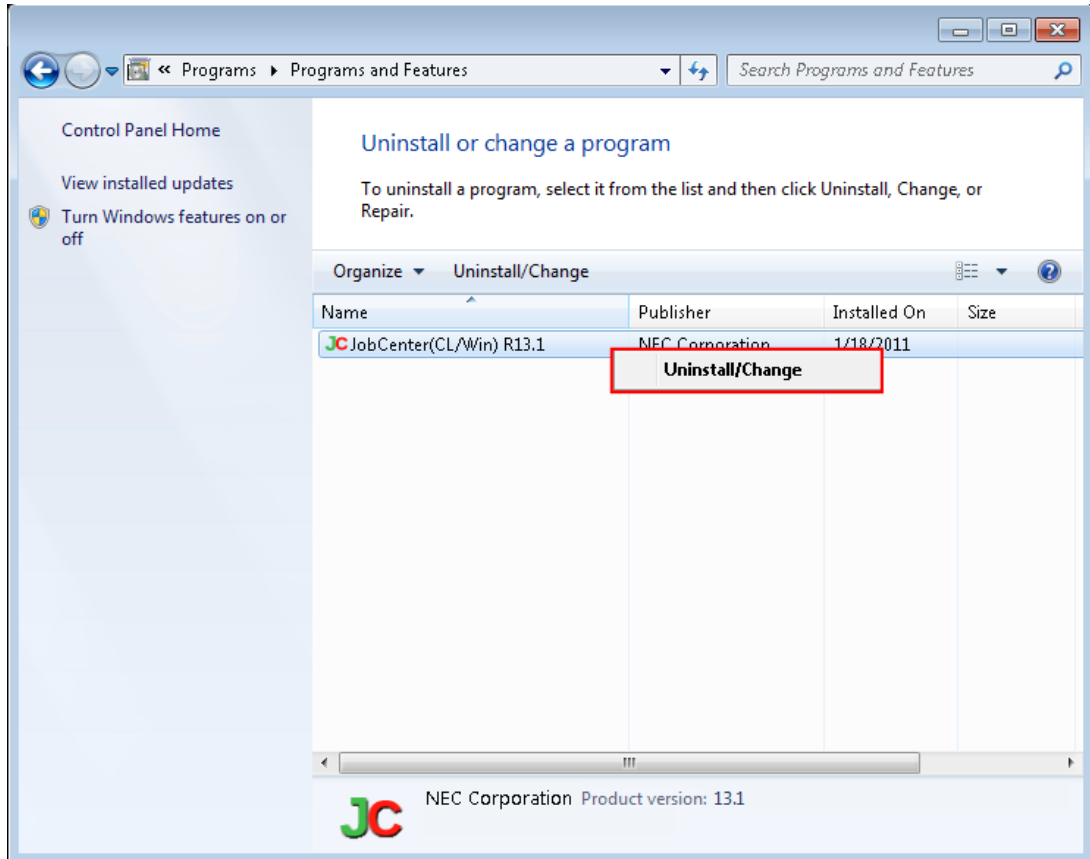


Figure 4.4. Package deletion dialog box

4.3.2. Deleting Registry-Related Data

If the registry-related data shown below still remains after CL/Win is uninstalled, delete it by performing the steps below. (This operation is not necessary if no data remains in the registry.)

1. Select [Start] followed by [Run] on Windows. In the Run dialog box, enter "regedit", and then click the [OK] button.

The [Registry Editor] dialog box appears.

2. In the left pane of the [Registry Editor] dialog box, right-click the following keys, and then select [Delete] from the shortcut menu.

- IA-32 environment

HKEY_LOCAL_MACHINE\SOFTWARE\NEC\JobCenter(CL/Win)\RXX.YY

- x64 environment

HKEY_LOCAL_MACHINE\SOFTWARE\Wow6432Node\NEC\JobCenter(CL/Win)\RXX.YY



Enter the corresponding setup JobCenter version for RXX.YY.

5 Version Upgrade

This chapter describes how to upgrade JobCenter. For details on how to upgrade the Windows cluster environment, refer to <JobCenter Guide for upgrading the version and applying the patches in a cluster environment> (Japanese only).

5.1. UNIX Version

5.1.1. Notes on version upgrade

Be sure to check the following notes before starting upgrade.

- During uninstallation, user-created Job Network definition data is inherited. Requests or trackers in progress are, however, not inherited.

Setting values associated with NQS, such as proprietary queue, machine information for forwarding requests, and user mapping, are all deleted. Therefore, reconfiguration is required after the installation of the new version.

To inherit settings associated with NQS, refer to [Section 5.1.2, "Version Upgrade with Inheriting NQS-Related Data"](#).

- If inherited user data contains a lot of unachieved trackers after upgrading, delete them immediately because these trackers cannot be inherited as described above.
- In R12.5 or later, there is no shared job network.

Thus, when upgrading JobCenter R12.4.x or earlier to R12.6 or later, move all job networks in the shared job network of the previous version to the job network group of an appropriate user before upgrading.

- In R12.5 or later, there is no "job network execution regulation" function. JobCenter of R12.5 or later supports an extended access authority (permission setting) function, which enables job network execution regulation as well. Because of the difference in concept, however, the settings of the conventional execution regulation function are not inherited automatically. Therefore, in order to continue execution regulation after the version upgrade, write down the existing settings in advance and set permissions after upgrading the version. This is not necessary when the job network execution regulation function is not in use before the version upgrade.

For details about permission setting, refer to in <Environment Guide>Chapter 9, 「User Authority (Permission)」.

- Once upgraded, user data might no longer be compatible and not operate normally even if the system is downgraded. Before upgrading the version, back up the user data (download all definitions) using the Helper function. For information about how to download definition data, refer to Section 2.4.1, "Downloading definition information" in <Guide for using Helper function> (Japanese only).
- In R12.6 or earlier, the spool directory is deleted after uninstallation of JobCenter. Therefore, back up the /usr/spool/nqs directory when performing the work described in [Section 5.1.2, "Version Upgrade with Inheriting NQS-Related Data"](#) in advance, and then restore the /usr/spool/nqs directory before executing nssetup in step 5.

5.1.2. Version Upgrade with Inheriting NQS-Related Data

To upgrade the version with inheriting NQS-related data, follow the steps below.

1. Stop JobCenter by using nqsstop. (Stop the cluster environment by using cjcpcw -stop <site name>.)

```
root> /usr/lib/nqs/nqsstop ←
```

2. Take backup copies of files under the directories below.

/usr/spool/nqs/nmap

/usr/spool/nqs/private

3. If a common daemon configuration file is used, back up the following file.

```
/usr/lib/nqs/rc/daemon.conf
```



- This file is a daemon configuration file provided only by the UNIX version of JobCenter, and common to the local sites and cluster sites. This file is deleted when JobCenter is uninstalled.
- The daemon configuration files for each site are inherited so there is no need to back them up.

4. Remove a package of the old version of JobCenter. For details on how to remove the old package, refer to [Section 4.2.1.1, “Uninstalling the Packages”](#).

5. Install the new version of JobCenter. Use nssetup to set up the execution environment.

```
root> /opt/netshep/nssetup ↵
```

When a message asks whether to use the old spool directory, select "y" to use the old spool directory and continue the setup.

```
[Warning] JobCenter spool directory(/usr/spool/nqs) is already exist.
Do you use the old spool directory? [y/n](default: n) y↵
```

After the setup is complete, use nqsstop to stop JobCenter.

```
root> /usr/lib/nqs/nqsstop ↵
```

6. Restore the files under /usr/spool/nqs/nmap and /usr/spool/nqs/private that you backed up in 2 above.

Remove the files and directories below after the restoration if they exist. (Otherwise, the consistency of the NQS database is not guaranteed, which makes normal operation impossible.)

```
/usr/spool/nqs/private/root/transfile
```

```
All files under /usr/spool/nqs/private/root/control/(directories)
```

```
All files under /usr/spool/nqs/private/root/data/(directories)
```

```
/usr/spool/nqs/private/root/tracking
```



For /usr/spool/nqs/private/root/tracking, delete the entire directory.

7. Delete the tracking file with the trfdelete command. Refer to in <Command Reference>Section 3.25, “trfdelete (Deleting Tracking Files)” for details on the trfdelete command.

8. If the common daemon configuration file was backed up in step 3 above, restore the backed up /usr/lib/nqs/daemon.conf file.

9. In order to upgrade from R12.10.x or earlier to R13.x or later, you need to convert the spool area definition. Otherwise, skip this step.

To use the user definition data in R13.x or later, upgrade the version of the site database by using the spoolconv command. For details about the spoolconv command, refer to in <Command Reference>Section 3.22, “spoolconv (Migrating User Definition Information of R12.10.x or Earlier)”.

An example of upgrading the version of the site database is shown below.

```

root> /usr/lib/nqs/gui/bin/spoolconv <
Do you convert the spool directory for SITE [local] ?
[y/n](default: n) y<
start convert spool directory.
:
:
:
end convert spool directory.

```

For an example of upgrading the version of the site database in a cluster environment, refer to in <Guide for using Cluster function>Section 2.6.2.2, "Upgrading the Site Database (UNIX Version)".



- When the command is executed, the name of the site whose database is to be upgraded is displayed. Before executing the command, check that [local] is specified.
- The user definitions present before the version upgrade are not changed or deleted. After the version upgrade is complete, check whether JobCenter operates normally and, if necessary, delete the user definitions.
- If the following warning message is displayed in the setup log, the host name and event ID of the corresponding user in [Default Parameters] - [Event Reception Parts] will not be inherited. In order to cope with this, set the default parameters for each corresponding user after CL/Win is connected.

```

Warning : Convert Skip ([DefaultParameter]EventReceive user="username"
hostname="hostname-specified-in-default-parameters" eventid="evenid-specified-in-
default-parameters")

```

10. Activate JobCenter with nqsstart. (Start the cluster environment by using cjcpcw <site name> <DB path>.)

```

root> /usr/lib/nqs/nqsstart <

```

11. Make sure that all the users who have been using the old version of JobCenter can establish connection and log in successfully using CL/Win.

JobCenter is now upgraded completely.



- When the local host name is changed, only data related to job network definition information can be inherited. For details on how to inherit data, refer to in <Environment Guide>Chapter 13, 「Environment Migration」 .
- The settings are not inherited if the system is downgraded.
- If a user does not establish connection using CL/Win after upgrading, the new version of MG/SV may not be able to recognize the user as a JobCenter user. Therefore, always check that all the users can establish connection using CL/Win.

5.1.3. Version Upgrade without Inheriting NQS-Related Data

If there is no need to inherit NQS-related data, follow the steps described in [Section 5.1.2, "Version Upgrade with Inheriting NQS-Related Data"](#), excluding steps 2, 6, and 7.

5.2. Windows Version

5.2.1. Notes on version upgrade

Be sure to check the following notes before starting upgrade.

- In Windows, select [Start], [All Programs], [JobCenter], [SV], and then [Server Environment Setting]. Select [User] there to check that the JobCenter administrator password check field contains "OK". If it contains "NG", reenter the user name and password and check that the password field displays "OK".

If the JobCenter administrator password check field contains "NG", the upgrade will not be performed normally.

- Before the start, stop all the "Server Environment Settings" of the servers (containing the installed JobCenter software) on which to perform the upgrade. If the "Server Environment Settings" are active, the upgrade will not be performed in the normal manner.
- During uninstallation, user-created Job Network definition data is inherited. Requests or trackers in progress are, however, not inherited.

If you upgraded the version without inheriting the NQS-related data, the setting values associated with NQS, such as proprietary queue, machine information for forwarding requests, and user mapping, are all deleted. Therefore, reconfiguration is required after the installation of the new version.

To inherit settings associated with NQS, refer to [Section 5.2.2.1, "Version Upgrade with Inheriting NQS-Related Data"](#).

For silent version upgrade, all the NQS-related settings will be inherited automatically.

- If inherited user data contains a lot of unachieved trackers after upgrading, delete them immediately because these trackers cannot be inherited as described above.
- In R12.5 or later, there is no shared job network.

Thus, when upgrading JobCenter R12.4.x or earlier to R12.6 or later, move all job networks in the shared job network of the previous version to the job network group of an appropriate user before upgrading.

- Special procedures are necessary to delete the previous version and install the new version in a WSFC cluster environment.

For details, refer to <JobCenter Guide for upgrading the version and applying the patches in a cluster environment> (Japanese only).

- If the previous version of JobCenter operates in a cluster environment, check whether the environment variable NQS_SITE was specified after uninstallation and delete it if it was.

If the environment variable NQS_SITE is specified, the new version of JobCenter cannot be correctly set up.

- Because the file paths are different in R12.8, the directories under JobCenter are rebuilt during upgrading. It is not possible to restore the previous directory structure once setup is complete. Therefore, downgrading is not supported.

Be sure to back up files before upgrading the version. For the files to back up, refer to the backup procedure guide provided by the maintenance center. (Back up the user data (download all definitions) using the Helper function.) For information about how to download definition data, refer to Section 2.4.1, "Downloading definition information" in <Guide for using Helper function> (Japanese only)

In a cluster environment, the version of the database must also be upgraded on the cluster site as well. For details, refer to the <Guide for using Cluster function>.

- From R12.8, the cjcpw file path has changed as follows:

```
%InstallDirectory%\bin\cluster\cjcpw.exe
```

If clusters were operated in versions before R12.8, it is necessary to modify the cjcpw file version upgrade path that is described in the JobCenter startup and termination scripts that are registered in the cluster software. Refer to <Guide for using Cluster function> for details on the startup and termination scripts.

- When the normal upgrade version is upgraded normally, the default port 23131/tcp is automatically selected as the port to be used by the jcdbcs process newly added to R13.1. When changing the port number, check that there is no other service whose name is identical to the service name "jcdbcs" of the file shown below. Before making a change, make sure that the JobCenter process is stopped.

```
%windir%\system32\drivers\etc\services
```

5.2.2. Windows Version (Normal Version Upgrade)

5.2.2.1. Version Upgrade with Inheriting NQS-Related Data

Installation by overwriting (upgrade) is possible. When upgrading, NQD related settings will be automatically inherited. Follow the steps below.



- Be sure to perform the following steps and checks before this work (upgrade).

1. Stop the JobCenter services and cluster site.
2. Make sure that no files in <JobCenterMG/SV installation directory> are being accessed.
3. Make sure that the drive where JobCenter MG/SV is installed has enough free space (more than the size used by the installed JobCenter MG/SV).

- After the execution of upgrading, select [Start], [All Programs], [JobCenter], [SV], and then [Environment Setting], and then click the [User] button to check that in the JobCenter User Management dialog box, the password field for each user indicates "OK."

If there is a password field that displays "Not Set", re-enter the user name and password and check that the password field displays "OK".

1. Insert the JobCenter media (DVD-ROM), and then select [Start] followed by [Run].

Specify one of the following file names, and then click the [OK] button.

```
Q:\PACKAGE\JB\WINDOWS\MGSV\x64\jcsetup.exe
```



In the following description, Q: is assumed to be the CD/DVD-ROM drive.

If the CD/DVD-ROM drive is assigned to a different drive, read the description accordingly.

2. In the [validate upgrade] dialog box, click the [Yes] button to begin the upgrade.

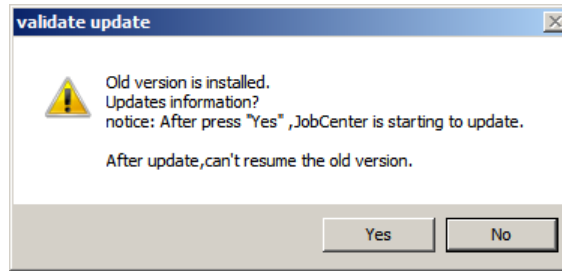


Figure 5.1. Upgrade confirmation dialog box

3. When JobCenter (MG/SV) is successfully upgraded, the [Finish] button becomes active. Click this button to complete setup.

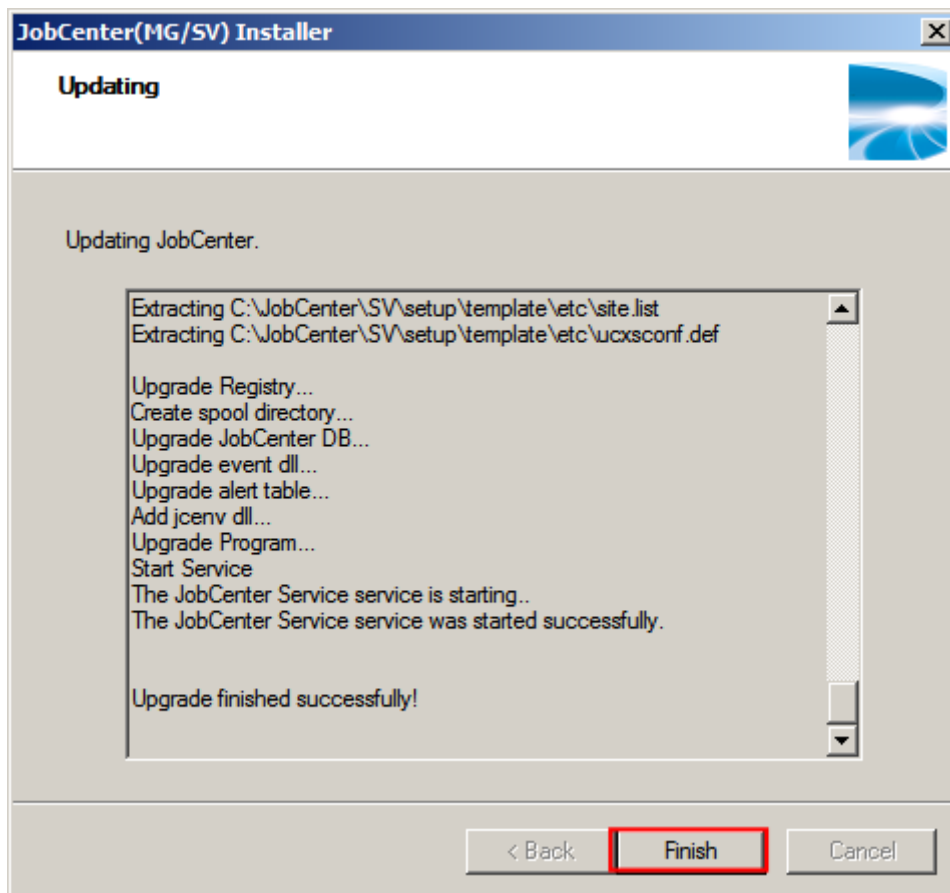


Figure 5.2. Installation completion dialog box



- If the following warning message is displayed in the setup log, the host name and event ID of the corresponding user in [Default Parameters] - [Event Reception Parts] will not be inherited. In order to cope with this, set the default parameters for each corresponding user after CL/Win is connected.

```
Warning : Convert Skip ([DefaultParameter]EventReceive user="username"
hostname="hostname-specified-in-default-parameters" eventid="eventid-specified-in-
default-parameters")
```

When upgrading JobCenter MG/SV, the installation directory of the previous version of JobCenter MG/SV is backed up. When upgrading is completed, the path of the backup destination is displayed as shown below.

After the upgrade finishes, make sure that everything is working correctly, such as submitting a test job, and then delete this directory.

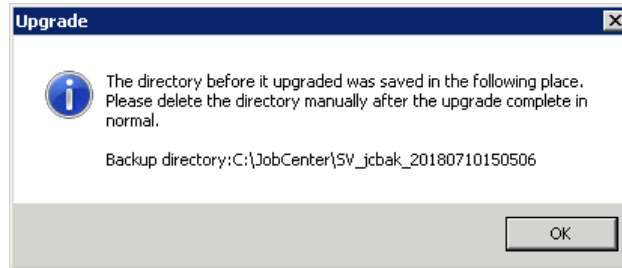


Figure 5.3. Upgrade notes dialog box



To back up the directory when upgrading, a disk volume approximately twice as large as that of the current JobCenter MG/SV is used in addition to the fixed disk volume described in <Release Notes>Section 3.3.1, "Required memory capacity and disk capacity". If the disk volume is insufficient, upgrading fails. Secure sufficient disk volume when upgrading.



When the installation finishes, the warning messages below might be displayed. Check the system in accordance with the contents of the warning.

■ "Failed to set the connect with ESMPRO/ServerAgent."

To link to ESMPRO/ServerAgent, make sure that ServerAgent is correctly installed.

Next, execute the following commands:

```
C:\> %InstallDirectory%\setup\amirtreg del ←
C:\> %InstallDirectory%\setup\amirtreg add ←
```

If not using ESMPRO/ServerAgent, this setting is not required.

5.2.2.2. Version Upgrade without Inheriting NQS-Related Data

The old version of JobCenter must be uninstalled. Follow the steps below.

1. Remove a package of the old version of JobCenter. For details on how to remove the package, refer to [Section 4.2.2.1, "Uninstalling the Packages"](#).
2. Install a new version of JobCenter.

5.2.3. Windows Version (Silent Version Upgrade)

5.2.3.1. Creating the Silent Version Upgrade Setting File

Create the setting file used for silent version upgrade. Create it in a text editor according to the following format.

```
"UPGRADE":true
"JCDBS_PORT":23131
```

```
"ADDPORFIREWALL":1
```



Change parameter values as necessary by reference to [Table 2.3, "Configurable parameters in the setting file"](#), which lists details of the parameters.



- For the parameters not listed in [Table 2.3, "Configurable parameters in the setting file"](#), specify the parameter defined in the format without changing the value.
- For notes on the parameters, refer to [Table 2.4, "Notes on the setting file parameters"](#).
- If the JobCenter version to update is R13.1 or later, the port number specified in "JCDBS_PORT" must be identical to that currently being used in the JobCenter version to update.

5.2.3.2. Silent Version Upgrade



Before starting the upgrade, be sure to perform the following checks:

1. Check that any file under <JobCenterMG/SV installation directory> is not currently accessed.
2. Check that there is enough free space (larger than the space that is used by the installed JobCenterMG/SV) in the drive in which JobCenterMG/SV has been installed.

The other notes on version upgrade are the same as those in [Section 5.2.2, "Windows Version \(Normal Version Upgrade\)"](#). Refer to the appropriate description.

Follow the steps below to perform the silent version upgrade.

1. Insert the JobCenter media (DVD-ROM), and then open the command prompt. You can open the command prompt by selecting [Start], [All Programs], and then [Accessories]. For Windows Server 2012 or later, you can open it from the application list that appears by selecting [Start] and then [↓].
2. Before starting the version upgrade, you need to stop the JobCenter service and cluster site. If they are not stopped, stop it using the following command:

- Stop the JobCenter service

```
C:\> %InstallDirectory%\bin\cluster\cjcpw.exe -stop -local
```

- Stop the cluster site

```
C:\> %InstallDirectory%\bin\cluster\cjcpw.exe -stop <site_name>
```



- If the JobCenter version is earlier than R12.8, the cjcpw command is located at "%InstallDirectory%\bin\cjcpw.exe". Thus, replace it as appropriate.
- For details of the cjcpw command, refer to in <Command Reference>Section 4.2, "cjcpw (Starting, Monitoring, or Stopping a Daemon Process)".

3. Enter the following command to change the current directory.

```
C:\> Q: ↵
```

```
Q:\> cd Q:\PACKAGE\JB\WINDOWS\MGSV\x64\script ↵
```



In the description below, assume that the CD/DVD-ROM drive is Q.
If your CD/DVD-ROM has another drive name assigned, replace "Q:" as appropriate.

4. Enter the following command to start the version upgrade.

```
Q:\> install.bat <jcsetup.conf> ↵
```

If the version upgrade is completed normally, the message "Upgrade finished successfully!" is displayed.



In <jcsetup.conf>, enter the full path of the pre-created setting file.

6 Checking the Version

To check the version of JobCenter, follow the steps in this chapter.

6.1. UNIX Version

Check the version of a UNIX product by using a command.

6.1.1. JobCenter MG/SV

Confirm the version of the package by using the commands in the following table.

Note that the package name differs between R12.7 or later and versions earlier than R12.6.x. In R12.7 or later, all the package names are common to MG/SV.

Be sure to confirm the patch package version number in a patch applied environment.

Table 6.1. Version check command of JobCenter for each OS

OS	Package name (12.6.x or earlier)	Package name (12.7 or later)	Version check command
HP-UX	NECSSJBmg (MG) NECSSJBag (SV) NECSSJBpt (accumulated patch)	NECJCpkg (common to MG/SV) NECJCpt (accumulated patch)	swlist <pkgname>
AIX	NECSSJBag (common to MG/SV) NECSSJBpt (accumulated patch)	NECJCpkg (common to MG/SV) NECJCpt (accumulated patch)	lspp -L <pkgname>.base
Linux	NECSSJBag (common to MG/SV) NECSSJBpt (accumulated patch)	NECJCpkg (common to MG/SV) NECJCpt (accumulated patch)	rpm -q <pkgname>

6.2. Windows Version

Use the GUI to check the version of the Windows version of JobCenter.

6.2.1. JobCenter SV

1. Select [Start], [All Programs], [JobCenter], [SV], and then [Environment Setting] on Window to execute server configuration.
2. The [Environment Setting] dialog box appears. Select [Help] and then [About JobCenter server environment settings] to check the version information.

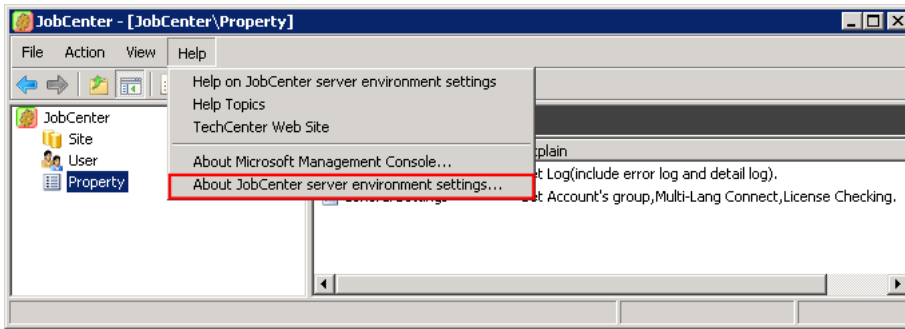



Figure 6.1. Version information selection window

6.2.2. CL/Win

1. Select [Start], [All Programs], [JobCenter], [CL XX.YY], and then [JobCenter Client XX.YY] on Windows to start JobCenter Client.

 XX.YY represents the version number.

2. The CL/Win window appears. From the menu bar, select [Help] and then [About JobCenter] to check the version information.

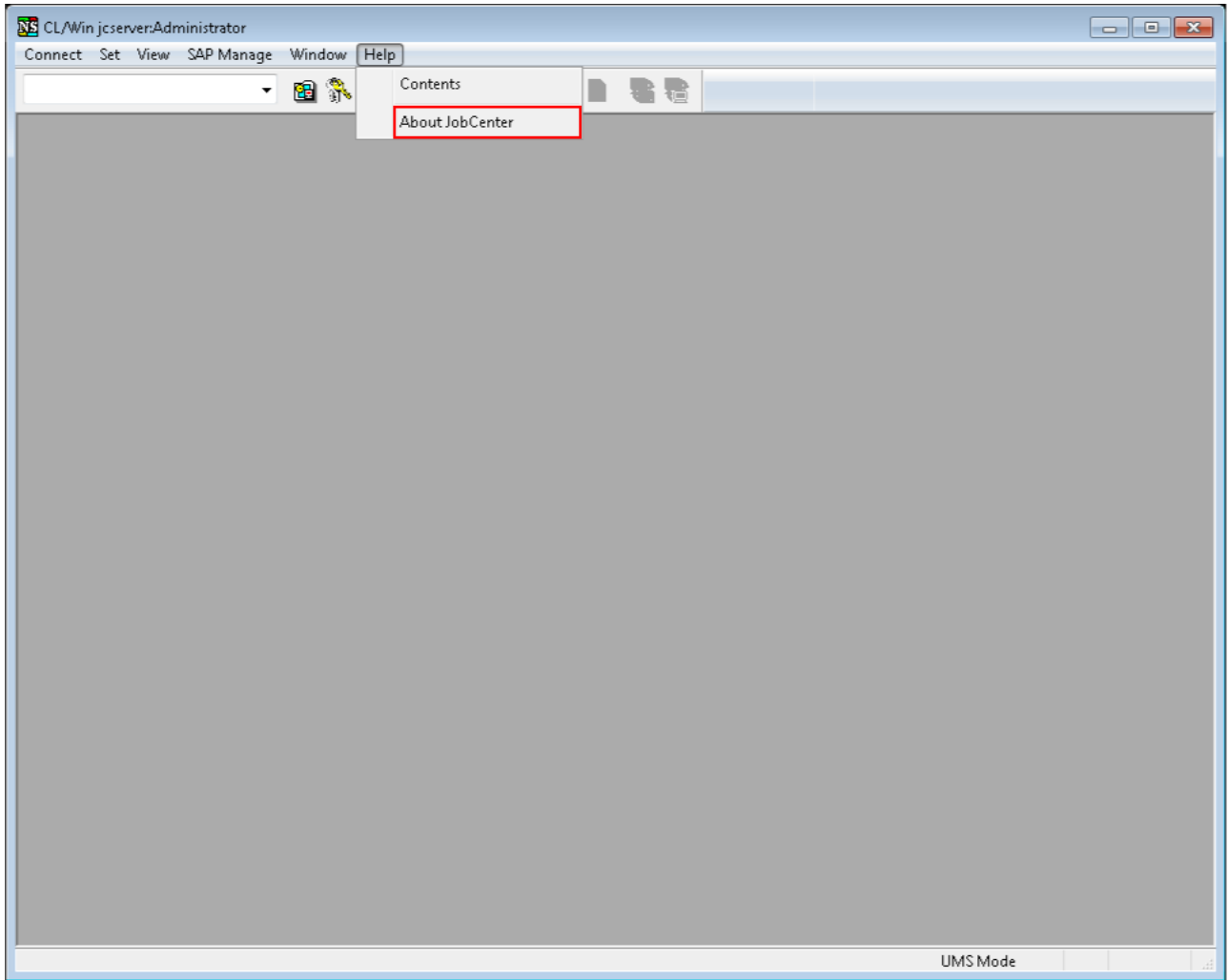


Figure 6.2. Version information selection window

