

High Availability Software

# EXPRESSCLUSTER X

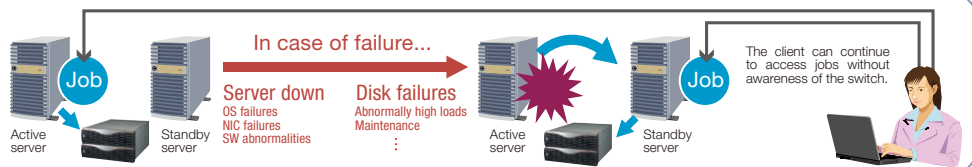


Disaster Recovery and Business Continuity solution for mission-critical system protection, achieving No.1 market share for 6 straight years from 2009 in Asia Pacific region\*.

\*Source: IDC Japan, July 2015 "Japan System Software 2015-2019 Forecast and 2014 Analysis" (J15380103)  
IDC AP, August 2015 "Asia/Pacific (Excluding Japan) Availability and Clustering Software Market Update 2015" (AP251101)

### HA Clustering System

This system uses multiple servers: active servers and standby servers. When any failure occurs on an active server, the jobs on that server are quickly inherited to a standby server to ensure that jobs continue running with minimum downtime.



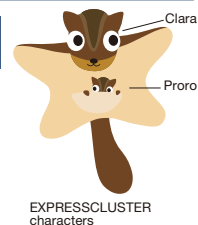
## Benefits

### Superior Business Continuity

Business continuity is crucial in today's increasingly computerized business world. EXPRESSCLUSTER X minimizes the loss of business opportunities during maintenance or disasters.

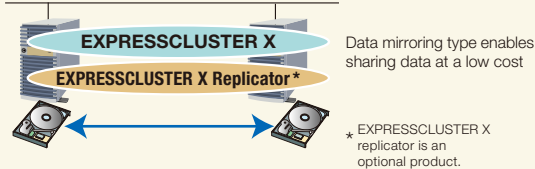
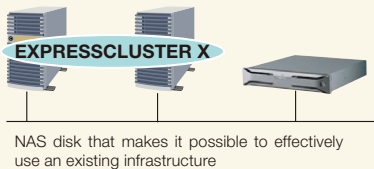
### Real-Time Health Monitoring

The operational status of even large-scale systems made up of multiple clusters can be checked at a glance. Jobs can also be moved to any server by performing simple operations.

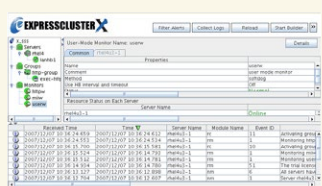


## Product Overview

**More selectable data sharing types** In addition to the typical shared storage methods used for HA clusters, NAS disks or data mirrors can be selected.

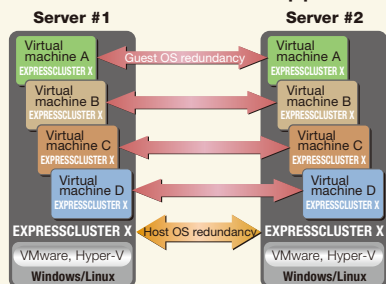


### Web-Based Management GUI

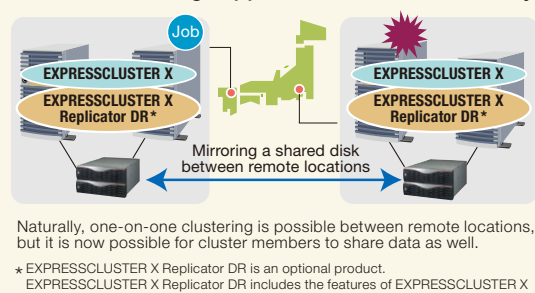


The operation status can be visually determined using a Web browser.

### Virtual environment support

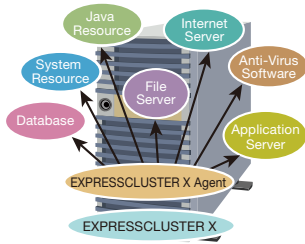


### WAN clustering supported for disaster recovery



## Add-On Options

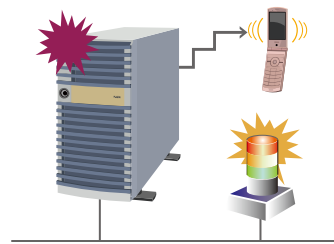
### • EXPRESSCLUSTER X Agent



In addition to monitoring to determine whether the various applications in a cluster are alive or dead, the status of the applications including hang-up and abnormal response can be monitored. Seven types of agents are available for each supported application.

\* File Server Agent is only available for the Linux version, and Anti-Virus Agent is only available for the Windows version.  
\*\* Java Resource Agent and System Resource Agent are only available for Windows/Linux version.

### • EXPRESSCLUSTER X Alert Service



Alert email can be sent to the administrator when a failure or failover occurs. In addition, the status of servers can be visually checked anytime through network warning lights.

## Case Studies

### Nipman India, Manufacturing



Nipman manufactures standard and special fasteners for the automotive and auto component industries. Successful implementation of EXPRESSCLUSTER led to following results: MS NAV and MS SQL Server can now shoulder peak workloads without experiencing downtime; Nipman has dramatically reduced downtime due to server, application, network or database failure; Nipman's IT team met the challenge of ensuring 99.99% uptime in its business-critical systems (ERP software and database) at a very low cost of ownership.

### FUJI YAKUHIN Japan, Medical Supplier and Pharmacy



FUJI YAKUHIN supports healthy lifestyles through a pharmaceutical delivery business (home medicine) that has the number one share in the domestic market. The number of drugstores is increasing and the processing capabilities of the existing DB server were reaching their limits. To support IT system for increasing drugstores, EXPRESSCLUSTER strengthens single server fault tolerance and has enabled the detection and recovery of software faults on group company DB servers running separately on the virtualization platform.

### United Cooperative Assurance Saudi Arabia, Insurance



United Cooperative Assurance Company (UCA) is a Saudi Arabia-based public shareholding company engaged in the provision of all classes of insurance and reinsurance business services within the Kingdom of Saudi Arabia. Successful implementation of EXPRESSCLUSTER led to business continuity by switching over to online mode within few minutes even on the Jeddah floods of 2011, achieving; Productivity of company staff increased by 15%, downtime of the main application reduced by 90%, and users satisfaction rate increased by 20%.

### East River Electric Power Cooperative USA, Electric Power Supply



East River Electric Power Cooperative is a wholesale electric power supplier distributing power to 24 member electric systems throughout eastern South Dakota and western Minnesota. Since the deployment of EXPRESSCLUSTER, East River has not experienced any overall system downtime.

### AV Global Corporation Pvt. Ltd. India, Logistics



AV Global is a leading total logistics solution provider, well known in the industry for its dynamic and result oriented approach. The Logistics system of AV Global equipped with EXPRESSCLUSTER is geared up to take peak workloads without experiencing downtime.

For more information, visit "<http://www.nec.com/expresscluster>"

#### Contact Information

NEC Corporation - Global Platform Division

Email: [info@expresscluster.jp.nec.com](mailto:info@expresscluster.jp.nec.com)

For more information, visit Website: [www.nec.com/expresscluster](http://www.nec.com/expresscluster)

North America (USA)  
NEC Corporation of America  
[www.necam.com](http://www.necam.com)

Asia  
NEC Asia Pacific Pte. Ltd.  
[sg.nec.com](http://sg.nec.com)

Europe (EMEA)  
NEC Nederland B.V.  
[nl.nec.com](http://nl.nec.com)

Greater China  
NEC(China) Co., Ltd  
[cn.nec.com](http://cn.nec.com)

• EXPRESSCLUSTER X is a registered trademark of NEC Corporation.  
• Other product names and company names in this leaflet are trademarks or registered trademarks of their respective holders.  
• Information in this leaflet is subject to change without notice.

© 2016 NEC Corporation NEC and the NEC logo are registered trademarks of NEC Corporation.

Cat.No. E02-16060002E