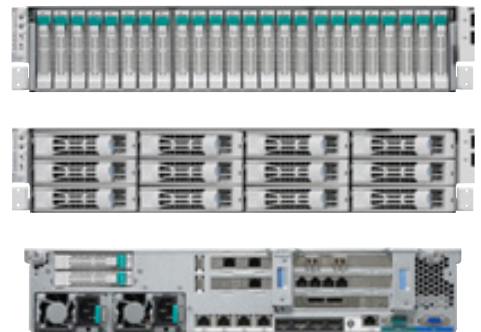


The high-capacity rack server

# NEC Express5800/R120e-2E(Storage-Rich)

SCALABLE AND ENERGY EFFICIENT SERVERS FOR A STORAGE SOLUTION



**HIGH PERFORMANCE**

**SUPERIOR ENERGY EFFICIENCY**

**SIMPLIFIED MANAGEABILITY**

## Scalable and Green

The Express5800/R120e-2E, a small footprint server, provides exceptional performance, scalability, and reliability. This server offers large-capacity drives and memory to support growth of your business. The R120e-2E helps to reduce IT expense with NEC's cooling technology and power management technology which minimizes energy loss.

## For Storage-intensive Workloads

The Express5800/R120e-2E, an Intel® processor-based 'storage rich' dual-socket 2U rack-mount, is perfect for high-performance and drive scalability in a small space. To keep your business running during a system error and to minimize its impact, the R120e-2E supports various redundant components in addition to remote management functions. Suitable for small- to medium-sized businesses, file servers, and backup servers.

### High Performance

- Support for the Intel® Xeon® E5-2400 v2 product family providing maximum energy efficiency and performance
- Up to 50.4 TB drive capacity and 4 port 1Gb integrated NICs - perfect for consolidation of file servers or to use as a backup server at medium-sized businesses
- RAID controller supporting PCI express 3.0 and LSI CacheVault technology for high I/O throughput and data protection

### Superior Energy Efficiency

- NEC's cooling technology and low power-consumption technologies to minimize power consumption
- 80PLUS® Titanium and Platinum certified high-efficiency power supply units to help minimizing energy conversion loss
- Redundant power supply with cold-standby mode to maximize energy conversion efficiency for any size system

### Simplified Manageability

- Integrated EXPRESSSCOPE Engine 3 technology provides extensive remote management capabilities regardless of the status of the server's power or operating system
- NEC's ESM PRO software suite provides centralized server management capabilities as well as advanced power management

## HARDWARE SPECIFICATION

MODEL	Express5800/R120e-2E
Form factor / height	2U Rack
Number of processors	1 to 2
Processors	Intel® Xeon® Processor E5-2403 v2 (1.80 GHz/4-core/10 MB) Intel® Xeon® Processor E5-2430 v2 (2.50 GHz/6-core/15 MB)
Memory type	DDR3-1600 ECC LV UDIMM, DDR3-1600 ECC LV RDIMM, DDR3-1333 ECC LV RDIMM
Memory slots	12
Maximum memory	384 GB
Storage type	Hot plug 2.5-inch SAS and SATA HDD, Hot plug 2.5-inch SAS SSD Hot plug 3.5-inch SATA HDD
Maximum internal drive bays	24 to 26 2.5-inch with optional drive cage 12 3.5-inch plus 2 2.5-inch with optional 2.5-inch drive cage
Maximum internal storage	50.4 TB
Removable media	-
Expansion slots	1 PCIe x8 Gen 3, 2 PCIe x4 Gen 3, 1 PCIe x4 Gen 2, 1 PCIe x1 Gen 2, 1 PCIe x8 Gen 3 for a RAID controller
Video (VRAM)	Integrated in the server management controller (32 MB)
Network	4 1000BASE-T plus 1 100BASE-TX for management
Redundant power supply	Optional, hot plug
Redundant cooling fan	Optional, hot plug
Power supplies	800 Watt
Systems management	EXPRESSSCOPE Engine 3
Interface	1 VGA, 1 to 2 serial, 6 USB 2.0 (plus 3 internal USB 2.0), 4 LAN, 1 management LAN
Dimensions (W x D x H) and maximum weight	448.4 x 696.3 x 87.4 mm / 17.6 x 27.4 x 3.4 in / 33 kg / 72.75 lbs.
Temperature and humidity conditions (non-condensing)	Operating: 10 to 40* °C / 50 to 104* °F, 20 to 80%, Non-operating: -10 to 55 °C / 14 to 131 °F, 20 to 80% * In specific configurations, the operable ambient temperature is up to 35°C/95°F
Operating systems and virtualization software	Microsoft® Windows Server® 2008 Standard / Enterprise Microsoft® Windows Server® 2008 R2 Standard / Enterprise Microsoft® Windows Server® 2012 Standard / Datacenter Microsoft® Windows Server® 2012 R2 Standard / Datacenter Red Hat® Enterprise Linux® 5 Red Hat® Enterprise Linux® 6 VMware® ESX™ 5

Note : For Linux support, go to the NEC website at <http://www.nec.com/global/prod/express/linux/>, or contact our sales representative

©Copyright 2014 NEC Corporation. The information and specifications contained in this publication are subject to modification without prior notice. Microsoft and Windows Server are either registered trademarks or trademarks of Microsoft Corporation in the United States and/or other countries. Intel, Intel Logo, Pentium, Pentium Inside, Xeon, and Xeon Inside are trademarks of Intel Corporation in the U.S. and/or other countries. Linux is a trademark of Linus Torvalds. Red Hat is a registered trademark of Red Hat, Inc. in the U.S. VMware is a registered trademark or trademark of VMware, Inc. in the United States and/or other jurisdictions. All other names of products and brands cited are the property of their respective owners. NEC is not responsible for photographic or typing errors.



Asia (APAC)  
NEC Corporation

7-1, Shiba 5-chome Minato-ku  
Tokyo 108-8001 Japan

[www.nec.com/express](http://www.nec.com/express)

Europe (EMEA)  
NEC Enterprise Solutions

Anton Philipsweg 1  
1223 KZ Hilversum  
The Netherlands  
+31 35 6899111

[www.nec-enterprise.com](http://www.nec-enterprise.com)

North America  
NEC Corporation of America  
Information Technology Group

2880 Scott Blvd.  
Santa Clara, CA 95050 U.S.  
+1 866 632 3226

[www.necam.com/servers](http://www.necam.com/servers)