

# Shareholder Information

## Transfer Agent for Common Stock

The Sumitomo Trust and Banking Company, Limited  
4-4, Marunouchi 1-chome, Chiyoda-ku, Tokyo 100-8233,  
Japan

## Stock Exchange Listings and Quotations

NEC common stock is listed on the Tokyo and seven other stock exchanges in Japan. Overseas listings are on the Swiss Exchange (in the form of Swiss Bearer Depositary Receipts), the Frankfurt Stock Exchange (in the form of a Global Bearer Certificate), the London Stock Exchange, and Amsterdam Exchanges. American Depositary Receipts for common stock (Symbol: NIPNY) are quoted in the NASDAQ system in the United States.

## Depositary for American Depositary Receipts (ADRs)

The Bank of New York  
101 Barclay Street, New York, NY 10286, U.S.A.  
Tel: (212) 815-2204  
U.S. toll free: (888) 269-2377 (888-BNY-ADRS)

## Sponsoring Bank for Global Bearer Certificate (GBC)

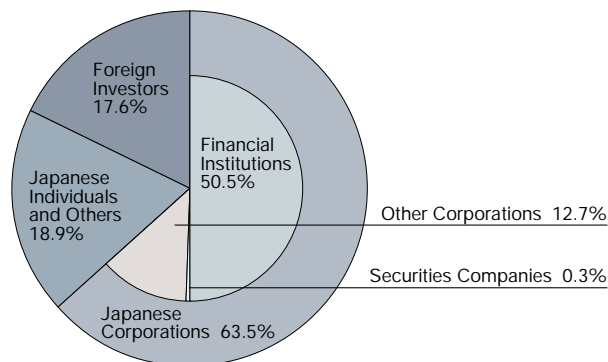
Deutsche Bank A.G.  
Taunusanlage 12, 60262 Frankfurt am Main, Germany

## Depositary Agent for Swiss Bearer Depositary Receipts (SBDs)

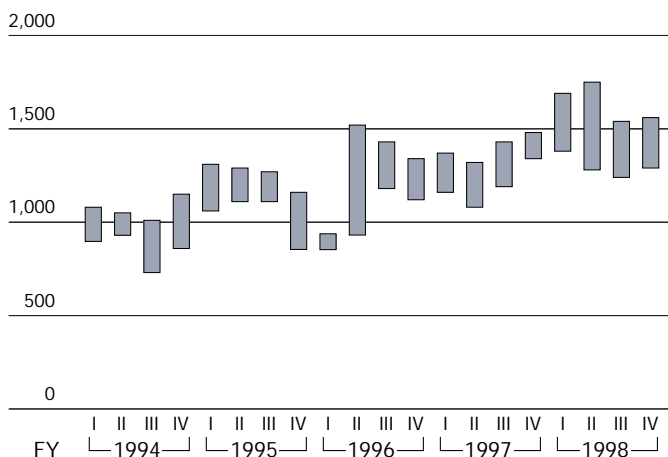
UBS AG  
Aeschenvorstadt 1, 4002 Basel, Switzerland

## Composition of Shareholders

(As of March 31, 1998)



## Stock Price Range on the Tokyo Stock Exchange (Yen)



## ADR (NASDAQ) Price Range (U.S. dollars)

