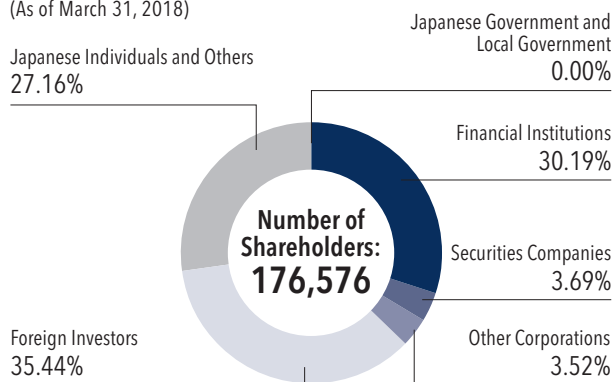


# Corporate Overview

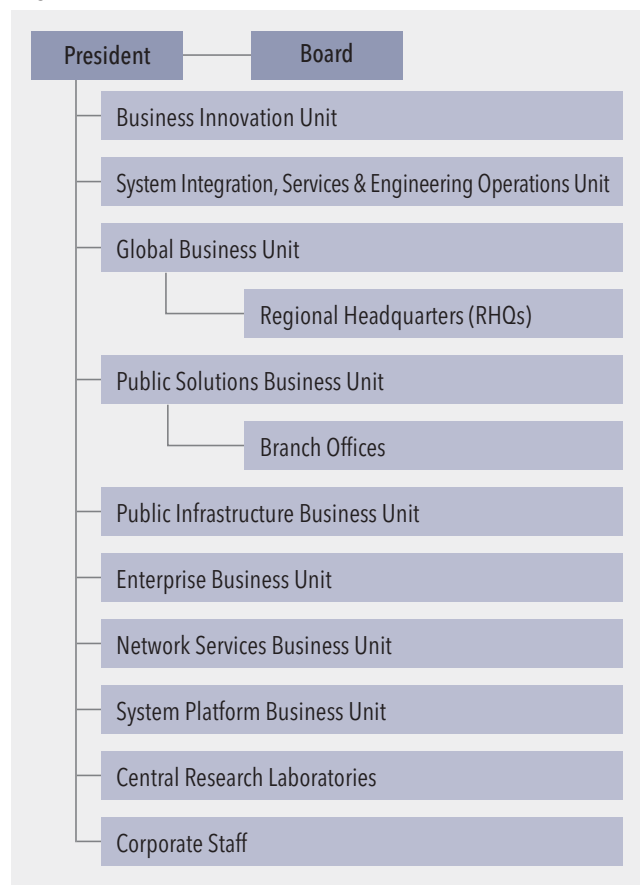
<b>Company Name</b>	NEC Corporation
<b>Address</b>	7-1, Shiba 5-chome, Minato-ku, Tokyo 108-8001, Japan
<b>Established</b>	July 17, 1899
<b>Number of Employees</b>	109,390 (NEC Corporation and consolidated subsidiaries) (As of March 31, 2018)
<b>Total Number of Shares Issued</b>	260,473,263 shares (As of March 31, 2018)
<b>Stock Exchange Listing</b>	Tokyo (Securities Code: 6701)
<b>Shareholder Register Administrator</b>	Sumitomo Mitsui Trust Bank, Limited 1-4-1, Marunouchi, Chiyoda-ku, Tokyo

## Classification of Shareholders (Shareholding Ratio)

(As of March 31, 2018)



## Organization Chart



## Major Shareholders (Top 10) (As of March 31, 2018)

Name of Shareholders	Number of Shares Held (Thousands of Shares)	Shareholding Ratio (%)
The Master Trust Bank of Japan, Ltd. (Trust Account)	13,625	5.24
Japan Trustee Services Bank, Ltd. (Trust Account)	12,780	4.92
Nomura International (Hong Kong) Limited - Unclaimed Client Account	7,814	3.01
Bnmysanv As Agent / Clients Lux Ucits Non Treaty 1	7,425	2.86
Japan Trustee Services Bank, Ltd. (Trust Account No.9)	7,193	2.77
Sumitomo Life Insurance Company	5,600	2.16
NEC Employee Shareholding Association	5,177	1.99
Japan Trustee Services Bank, Ltd. (Trust Account No.5)	4,944	1.90
State Street Bank West Client - Treaty 505234	4,890	1.88
Japan Trustee Services Bank, Ltd. (Trust Account No.4)	4,323	1.66

Note: The shareholding ratio is calculated by excluding the number of treasury stock (630,032 shares)