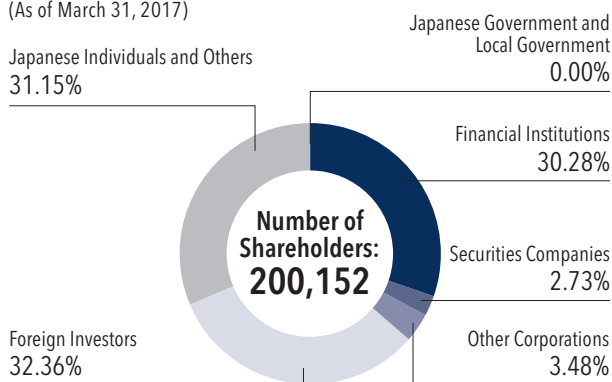


Corporate Overview

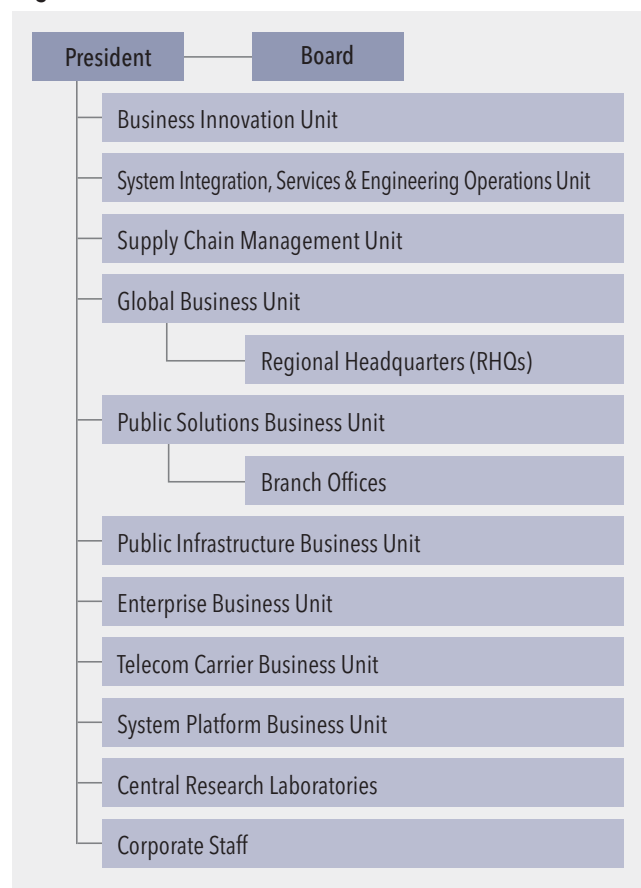
Company Name NEC Corporation
Address 7-1, Shiba 5-chome, Minato-ku, Tokyo 108-8001, Japan
Established July 17, 1899
Number of Employees 107,729
 (NEC Corporation and consolidated subsidiaries)
 (As of March 31, 2017)
Total Number of Shares Issued 2,604,732,635 shares (As of March 31, 2017)
Stock Exchange Listing Tokyo (Securities Code: 6701)
Shareholder Register Administrator Sumitomo Mitsui Trust Bank, Limited
 1-4-1, Marunouchi, Chiyoda-ku, Tokyo

Classification of Shareholders (Shareholding Ratio)

(As of March 31, 2017)



Organization Chart



Major Shareholders (Top 10) (As of March 31, 2017)

Name of Shareholders	Number of Shares Held (Thousands of Shares)	Shareholding Ratio (%)
Japan Trustee Services Bank, Ltd. (Trust Account)	123,516	4.75
The Master Trust Bank of Japan, Ltd. (Trust Account)	116,590	4.49
Nomura International (Hong Kong) Limited - Unclaimed Client Account	78,141	3.01
Japan Trustee Services Bank, Ltd. (Trust Account No.9)	59,617	2.29
Bnymstanv As Agent / Clients Lux Ucits Non Treaty 1	58,250	2.24
NEC Employee Shareholding Association	52,439	2.02
Japan Trustee Services Bank, Ltd. (Trust Account No.5)	50,513	1.94
Trust & Custody Services Bank, Ltd. (Trust Collateral Account)	42,833	1.65
Nippon Life Insurance Company	41,977	1.62
Japan Trustee Services Bank, Ltd. (Trust Account No.4)	41,414	1.59

Note: The shareholding ratio is calculated by excluding the number of treasury stock (6,086,347 shares).