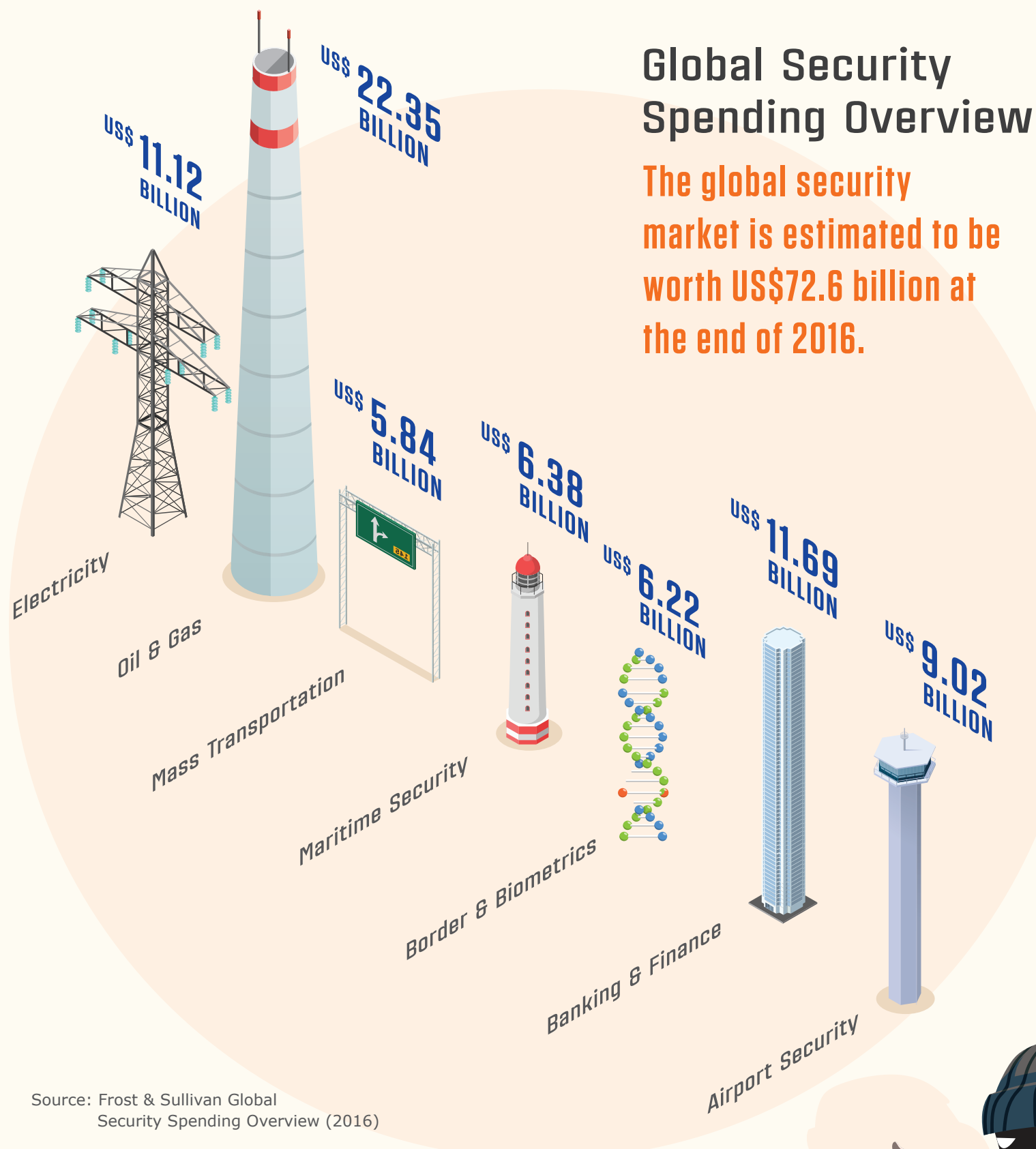


# INTEGRATING CYBER-PHYSICAL SECURITY FOR A SAFER CITY

Addressing the Emerging Risks to Critical Infrastructure with Cyber-Physical Solutions



Source: Frost & Sullivan Global Security Spending Overview (2016)

## Why Security is a Key Priority for Smart Cities

Connected infrastructure

Convergence of operational technology and information technology

Disconnect between physical security and cyber security

Cyber-attacks potentially disrupting critical services

## DDoS\* Attacks: A Growing Threat



**240%** increase in botnet activity, traced mostly to 900 compromised CCTV cameras

**25,513** IP cameras compromised in a DDoS attack, including 24% from Taiwan, 9% from Indonesia, and 6% from Malaysia (2016)

**152,000** IoT devices (e.g., CCTV cameras and personal video recorders) compromised in a 1Tbps DDoS attack

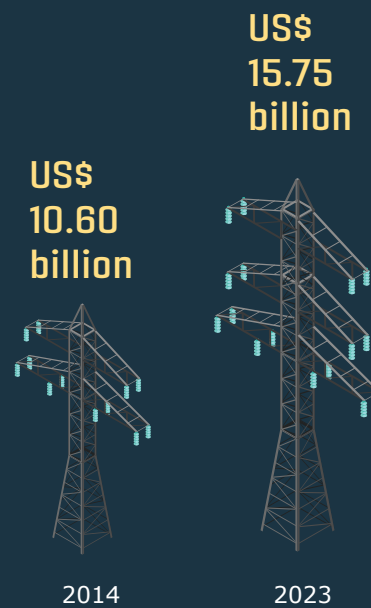
\*Note: Distributed denial-of-services

## Security Technology Forecast: Key Areas To Watch

### AIRPORTS



### ELECTRICITY



### OIL & GAS



Source: Frost & Sullivan

### AIRPORTS

**Physical**  
Long screening queues at security checkpoints

**Cyber**  
Automated check-ins, baggage drops, and ID scans

#### KEY TECHNOLOGIES

- Multimodal biometrics
- Facial recognition algorithms
- Network-wide multilayer defenses
- Advanced protection gateways for SCADA networks

### NATURAL DISASTER MANAGEMENT

**Physical**  
Lack of disaster planning and recovery practices

**Cyber**  
Remote attacks on critical infrastructure

#### KEY TECHNOLOGIES

- Environmental sensors in risk-prone areas
- Advanced predictive analytics
- Emergency Incident Response
- Vulnerability identification, mitigation and management system

### CITIZEN SAFETY

**Physical**  
Physical threats in densely-populated areas

**Cyber**  
Data breaches in public domain

#### KEY TECHNOLOGIES

- Behavior Analysis
- Video Data Analytics
- Incidence Reporting
- Cyber security forensics

## CRITICAL INFRASTRUCTURE OPERATIONS: TOP 6 AREAS OF VULNERABILITY

### Stadium/Big Events

**Physical**  
Hostile-aggressive individuals/crowds

**Cyber**  
Attacks on networks to cripple operations and cut power

#### KEY TECHNOLOGIES

- High-resolution cameras
- Behavioral analytics
- Real-time networking monitoring
- Next-generation firewalls

### ELECTRICITY

**Physical**  
Vandalism/terrorism of plants/critical facilities

**Cyber**  
Connected devices as new grid invasion access points

#### KEY TECHNOLOGIES

- Multi-layered defence for SCADA
- Intrusion Detection
- High-resolution cameras
- Behavioral & Video Data Analytics

### GOVT SERVICES

**Physical**  
Vandalism, theft, and/or disruption of services

**Cyber**  
Cyber-attacks motivated by political dissent

#### KEY TECHNOLOGIES

- Multimodal biometrics for access control
- Behavior Analysis
- Detection of cyber threats and data leaks, and identification of cyber-attack patterns
- Intrusion Detection

Capture key insights on securing cities in an increasingly connected world



SCAN HERE TO READ THE WHITE PAPER OR VISIT [nec.com/safecity](http://nec.com/safecity)