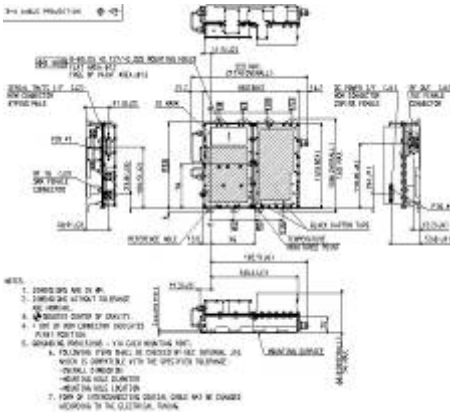


High Linearity SSPA Line Up

S-band SSPA



Typical ICD for S-band SSPA

Main Characteristics

- o Operational Frequency Range: 2505-2535MHz
- o High power and High gain.
- o Output Power : 24W min at NPR 18.5dB.
- o Gain : 70dB min.
- o S-band SSPA consists of the Low Power Section (LPS), High Power Section (HPS) and dedicated power supply (EPC).
- o S-band SSPA has gain control function over 15.5dB 0.5dB step
- o S-band SSPA output Output power monitor telemetry, Bus input current telemetry, Temperature telemetry, ON/OFF telemetry and Gain status telemetry