

# WebOTX Portal

November, 2015

NEC Corporation,  
Cloud Platform Division,  
WebOTX Group





# Orchestrating a brighter world

NEC brings together and integrates technology and expertise to create the ICT-enabled society of tomorrow.

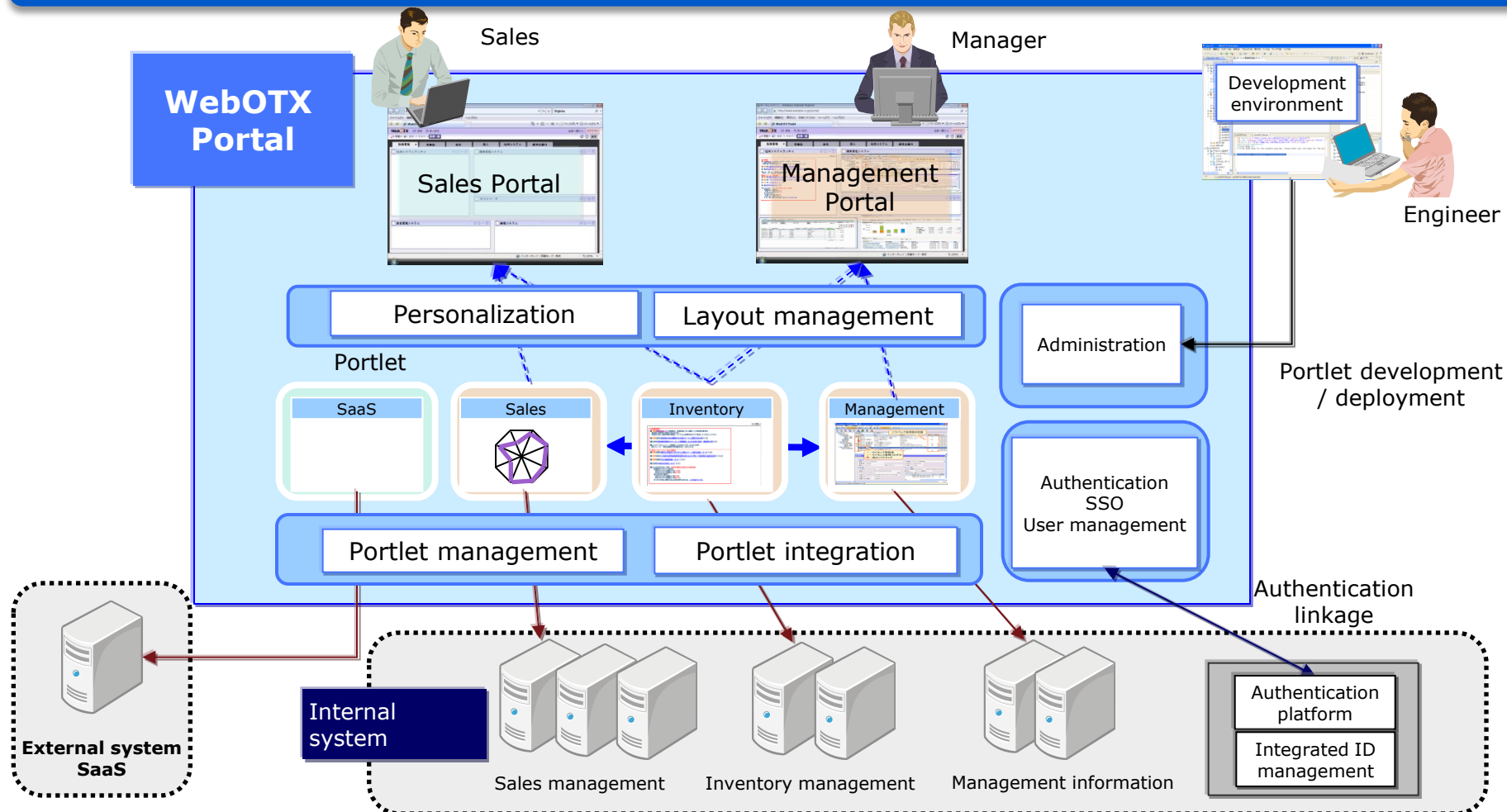
We collaborate closely with partners and customers around the world, orchestrating each project to ensure all its parts are fine-tuned to local needs.

Every day, our innovative solutions for society contribute to greater safety, security, efficiency and equality, and enable people to live brighter lives.

# Front-end integration “WebOTX Portal”

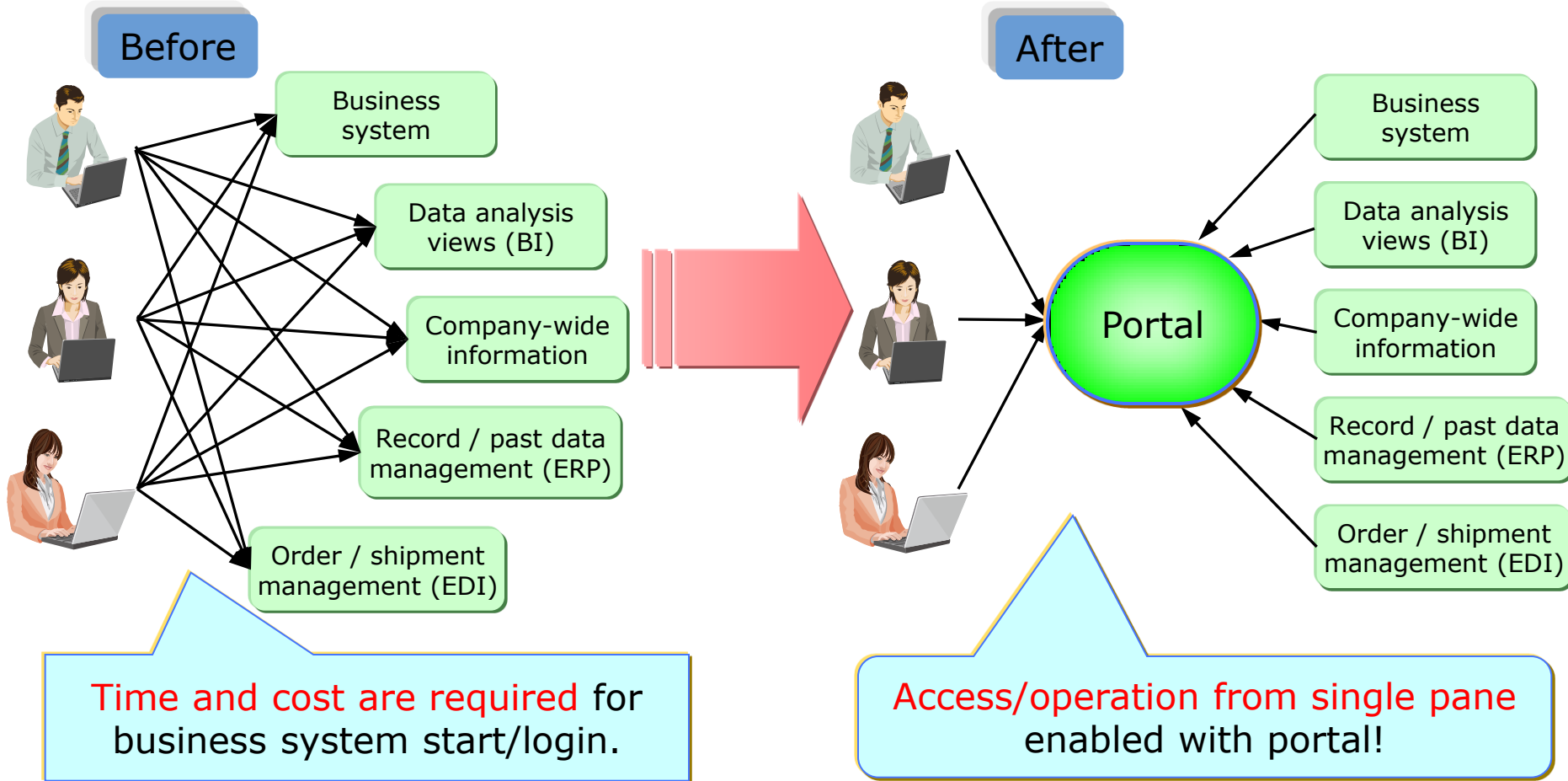
# What is WebOTX Portal?

- Internal system integration for creating appropriate work style of all users
  1. Interface with high operability by integrating several web system GUIs
  2. Flexible UI expansion to affiliations / jobs / authorities of users



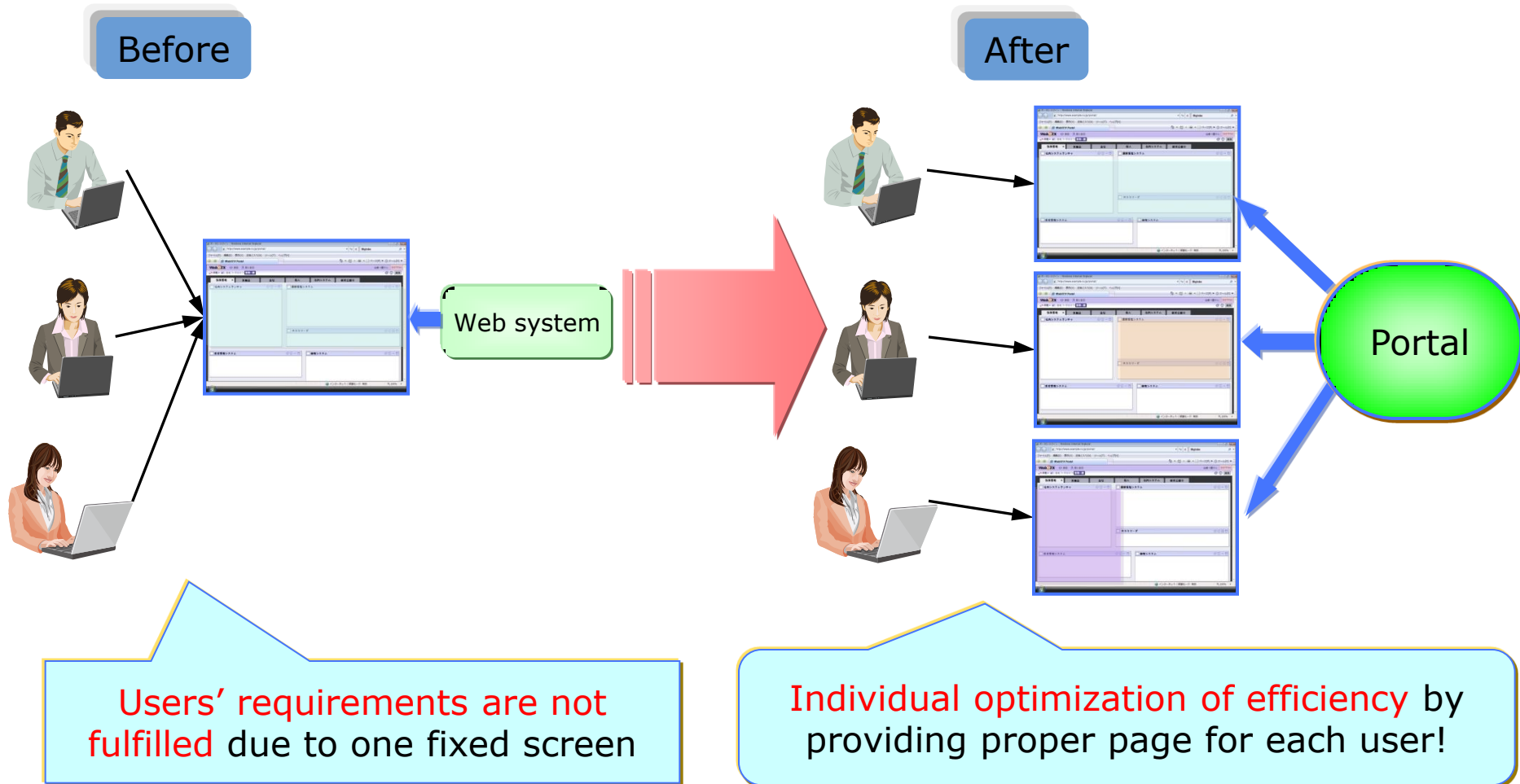
# 1. Integration of several web system GUIs

- Centrally manages GUI operation of numbers of web systems, and integrates on single web pane
- Seamlessly integrates several web system operation, and improves total usability



## 2. UI expansion to users' business at low cost

- According to users' affiliations / roles, proper contents are provided
- Without re-development of web application, layout can be easily changed

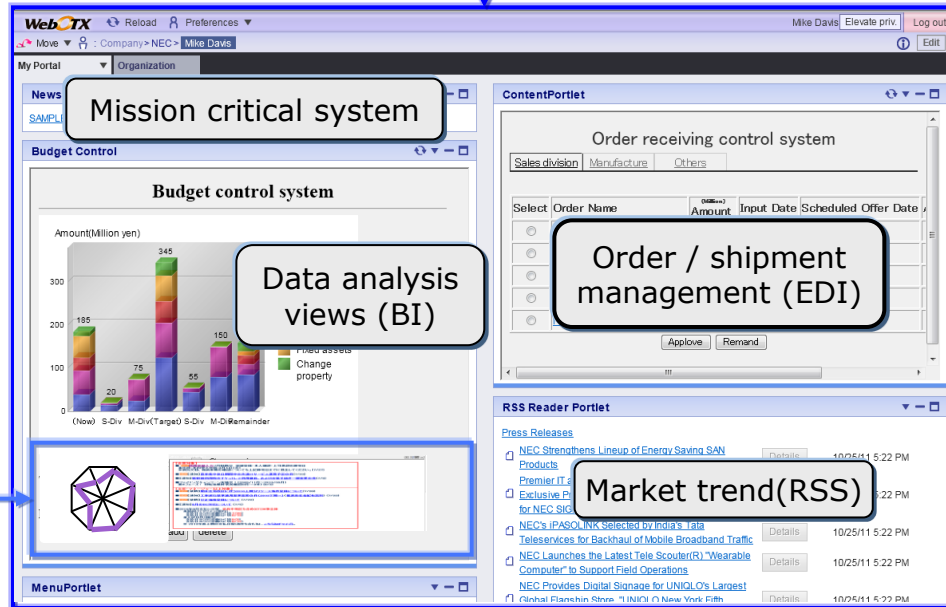


# Application window integration using portal

- Application UI integration enabled by combining portlet (window parts)
  - Integration by specifying URL of external web system (Displays in portlet, links, and RSS)
  - Integration by portlet development compliant to portlet standard (JSR168/286)

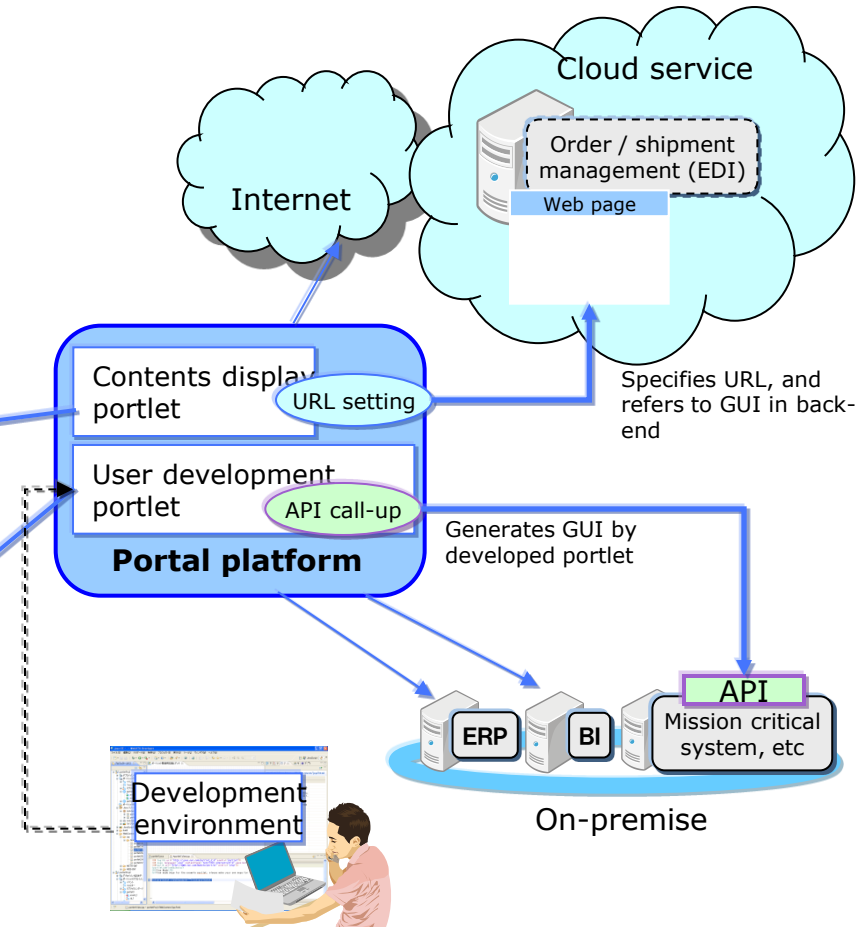
## Portal platform

Integrates several portlet and displays as single web window. Manages window status/ display mode, user information etc using portal platform.



## Portlet

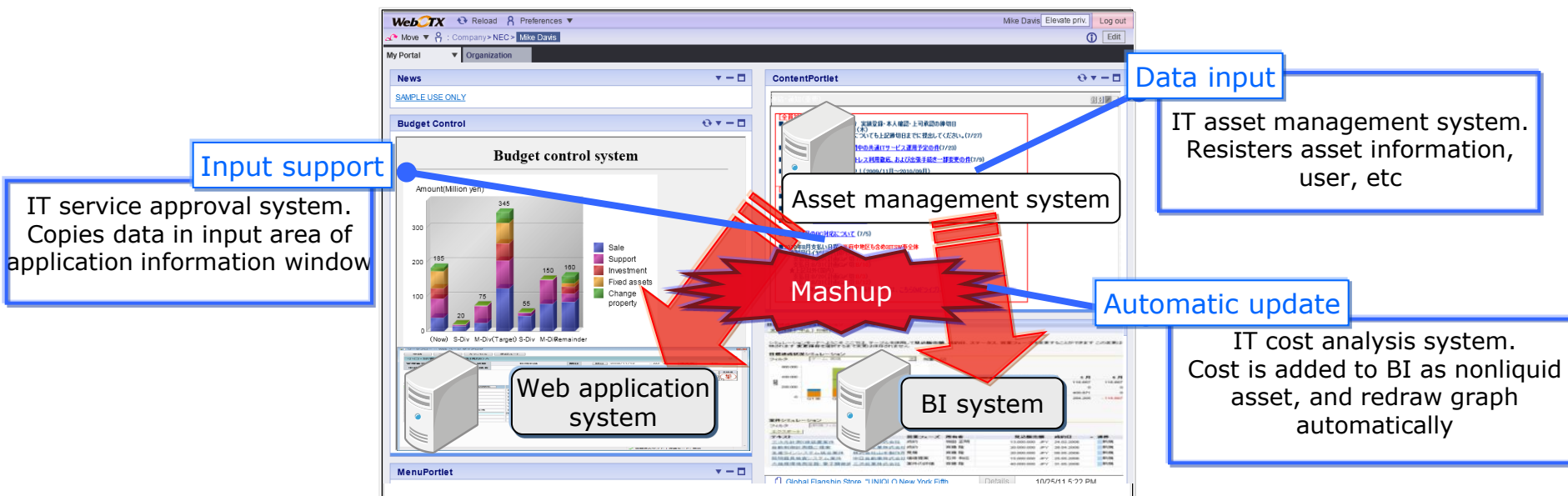
Develops screen parts as one web application. Development can be independent from whole web screen operation



# Front-end mashup by portlet integration

- **Displayed data interlock** in real time based on latest standard specification (JSR286)
  - According to data input etc, related portlet view is automatically updated
  - Exchanges data among systems (on portlet), and overlapped data input and wrong input are reduced.

e.g.) If asset is registered in asset management system, data integration with related systems is realized.



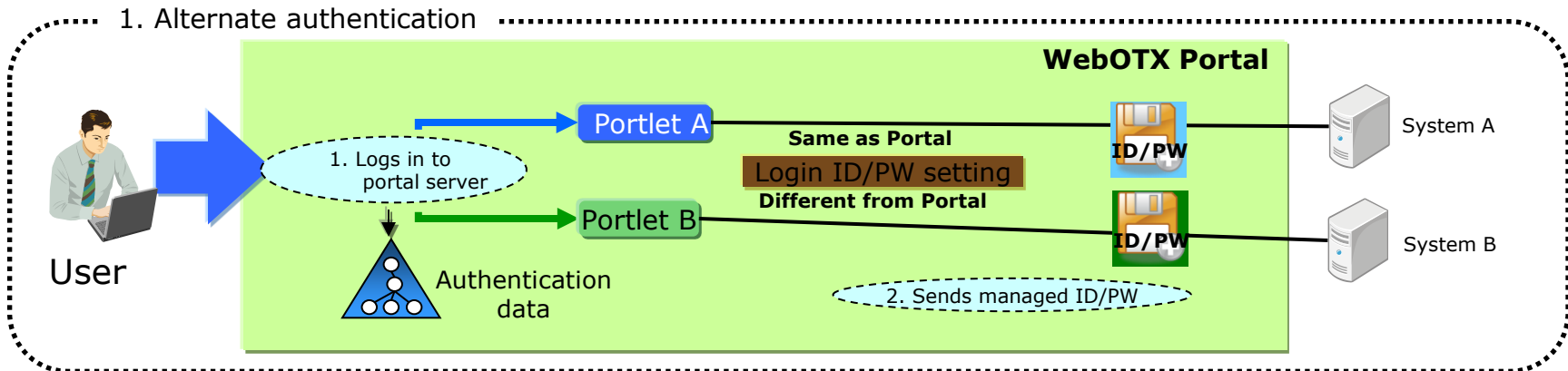


# Effortless authentication with single sign-on

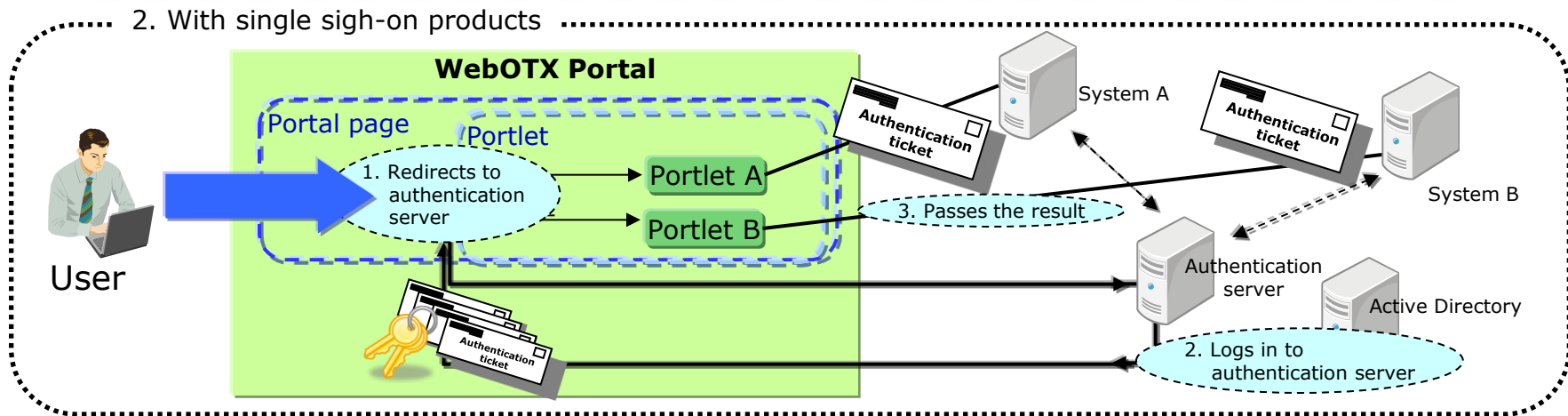
## ■ Supports 2 kinds of single sign-on methods

1. Manages and passes ID/PW of back-end system (alternate authentication)
  - Supports Form authentication
2. Integrates with external single sign-on products
  - Redirects to authentication system, and passes the result to back-end system

### 1. Alternate authentication

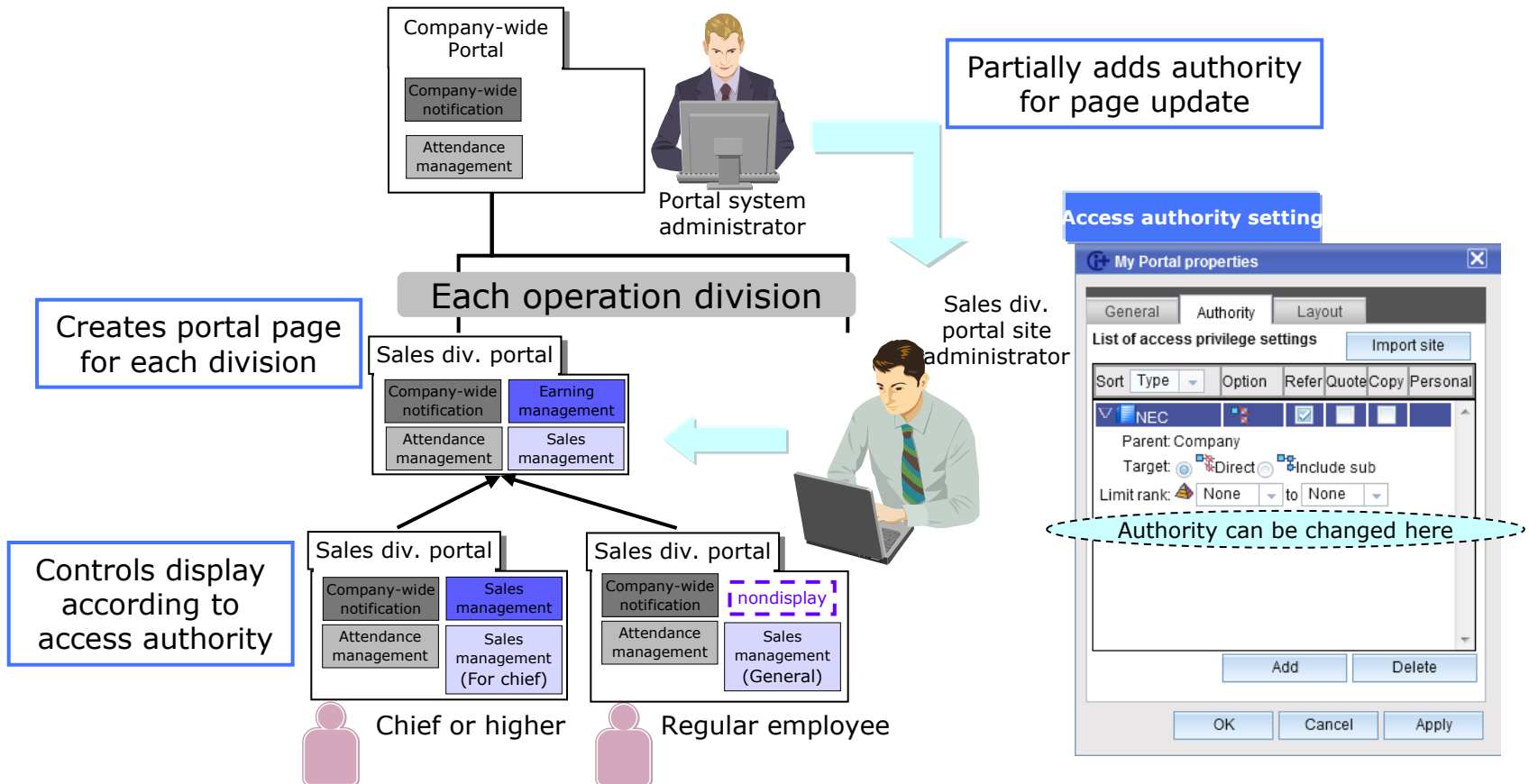


### 2. With single sign-on products



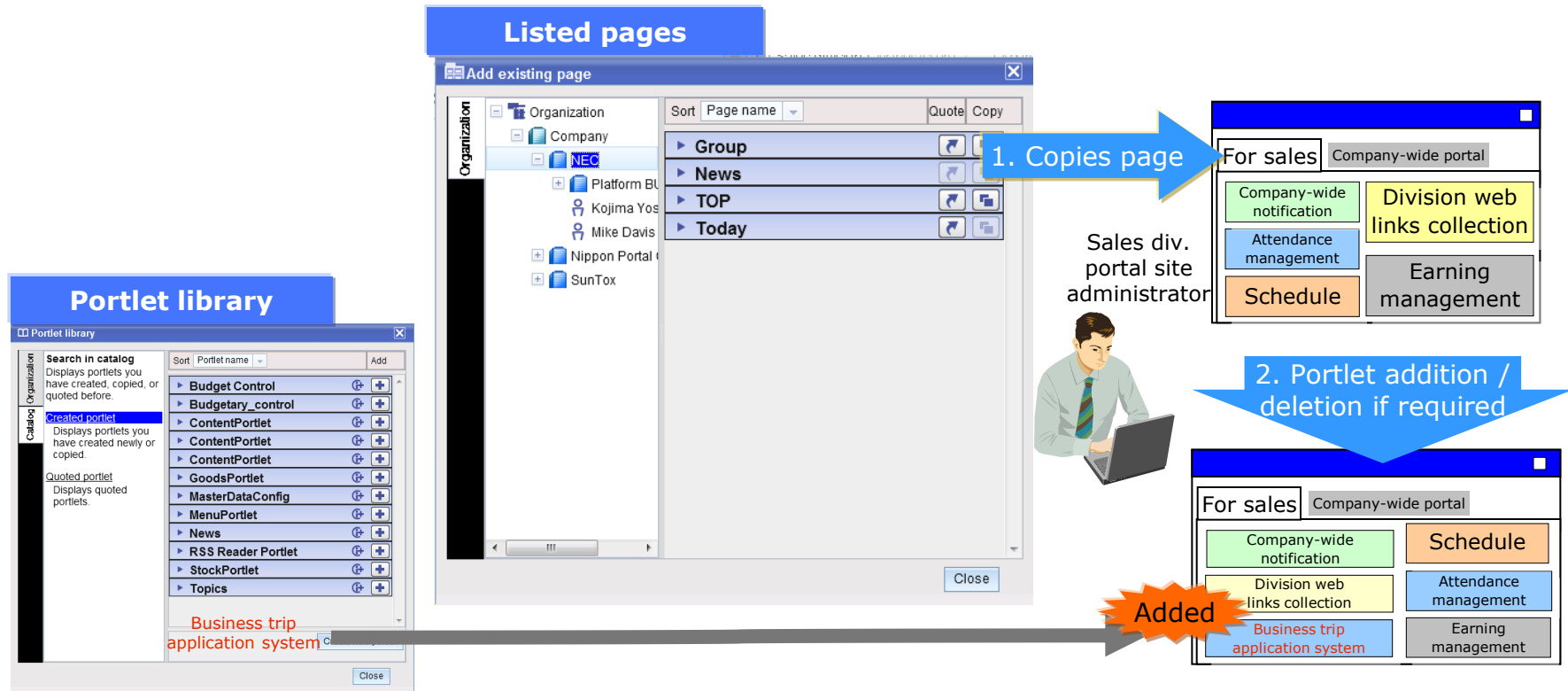
# Portal page considering affiliation / job title

- Partially adds authority on integrated platform managed by information system division, and **employees in each division can rapidly modify pages**
- Controls access authority particularly by specifying **organization hierarchy** (e.g. under sales business unit) and **job title's range** (e.g. Manager or higher)



# Portal site expansion at low cost enabled by reuse

- By copying page and portlet of setting already completed and updating partially, portal page can be newly created at low cost
- By reusing portlet of setting completed, new portlet can be added without re-setting



# Portal site easy creation by intuitive GUI operation

- Without complicated administration tool, portal site can be created easily on UI
- Layout edition can be operated intuitively by drag & drop

Moves portlet (window parts) by drag & drop

The screenshot displays the WebCTX portal administration interface. At the top, there's a navigation bar with 'WebCTX', 'Reload', 'Preferences', and 'Portlet library'. The main area is divided into several sections: 'Links', 'MenuPortlet', 'RSS Reader Portlet', and 'Content Portlet'. The 'Content Portlet' features a 'Budget control system' chart. A large brown arrow points from the 'Links' section towards the 'Content Portlet', indicating the drag-and-drop functionality. Another brown arrow points from the 'RSS Reader Portlet' section towards the 'Content Portlet', indicating the ability to modify layout dimensions. A 'Confidential' watermark is visible in the center of the interface.

Category	Value
Now	185
S-Div	20
M-Div	75
M-Div(Target)	345
S-Div	55
M-Div	150
Remainder	160

Height/width of layout can be modified by drag operation

# Thank You

---

# WebOTX

Application Service Platform for the age of cloud-computing

For more product information & request for trial license,  
visit >> <http://www.nec.com/webotx/>

For more information, feel free to contact us - [global@soft.jp.nec.com](mailto:global@soft.jp.nec.com)

---

 **Orchestrating** a brighter world

**NEC**